



Civil Rights in Our Community



Meet Congresswoman

Mary Gay Scanlon

Sunday, January 12
at 1:00 pm

(page 24 has all the info)



**Celebrate Jewish
Disabilities
Awareness and
Inclusion Month**

Friday, February 7 at 7:30 p.m.

with special Guest:

Dr. Mark Salzer

(for more details, see page 30)

Preschool



Saturday, February 8
7:00 p.m.
with MC Extraordinaire
Rabbi Peter Rigler

(see page 31 for details)
*Adults only, byob

WHAT'S INSIDE

- | | |
|-----------------------------------|-----------------------------------|
| 2 Rabbi's Message | 19 ToaSTY |
| Adult Confirmation | 20 Happiness & Memorial Cards |
| 3 Cantor's Notes | Mitzvah Core |
| <i>Shushan Rhapsody</i> Auditions | 21 JNF Trees |
| Tanakh | Recent Deaths |
| 4 Director's Corner | 22 Lobby Collections |
| Community Coordinator | Mitzvah Meals |
| 5 Board Message | 23 DMax Foundation |
| WellnesSquad | <i>Gift Garden</i> |
| Keshet-at-TSB Task Force | 24 Congresswoman Mary Gay Scanlon |
| 6 JDAIM Shabbat | 25 Hilltoppers Movie Matinee |
| Oneg Sponsors | 26 Myla Goldberg |
| 7 Sanctuary Chairs | 27 Shushan Auditions |
| Scholar-In-Residence | 28 Culture Club Super Bowl |
| 8 Sisterhood | Party |
| 9 Culture Club | 29 Yin Yoga |
| Hilltoppers | 30 Dr. Mark Salzer |
| 10 Mazel Tov | 31 Trivia Night |
| Religious Practices | 32 Reproductive Health & Rights |
| Sisterhood Gifts | 33 Bimah Baskets |
| 11 Conversations with Men | Staff and Board |
| Brotherhood | 34 Temple Funds |
| ChaiMen | Lobby Collections |
| 12 Women's Spirituality | 35 Contribution Form |
| With Gratitude | 36 Tzedakah |
| 13 Preschool | 37 January Yahrzeits |
| 14 <i>Rimon / Noar</i> | 38 February Yahrzeits |
| 15 Israel Photo Collage | 39 January Calendar |
| 16 URJ Teen Songleading | 40 February Calendar |
| Fellowship | |
| 17 B'Nai Mitzvah | |
| 18 L'Dor V'Dor | |
| New Members | |
| Sisterhood Book Club | |

THOUGHTS FROM RABBI RIGLER



Adult Confirmation comes to Temple Sholom

If you walk down our school hallway you can see the pictures from decades of confirmation classes. At Temple Sholom, our 10th grade students have the opportunity to develop their Jewish involvement and learning by participating in Confirmation classes and helping to lead a special Confirmation service on the holiday of Shavuot. Confirmation is the celebration of a teenager's ongoing commitment to Jewish life.

When Reform Jews in Germany introduced the confirmation ceremony in the early 19th century, they planned to replace the bar mitzvah. They were guided by a belief that a 13-year-old is not mature enough to fully grasp the religious principles of Judaism. Confirmation was seen as the opportunity for older teens, who had gained more social, intellectual and religious maturity, to “confirm” their commitment to live a Jewish life. Theirs was a radical idea in two ways. First, the ceremony gave an equal role to girls, who were being educated with boys in the secular world but not in the Jewish world. Also, the concept of confirmation was based on a German Lutheran church practice where, after a period of study, a confirmand would make a formal declaration of faith.

The first confirmation on record took place in 1803 in a synagogue in Dessau, Germany. The ceremony caught on in Europe and arrived in America in 1846 along with Rabbi Isaac Mayer Wise, a German immigrant who founded organized Reform Judaism in the United States. As years went by, the bar mitzvah ceremony regained popularity among Reform Jews. We are currently celebrating the 200th birthday of Isaac Mayer Wise. With

abundant energy, passion, and willpower, he created the American Reform Movement. He published our first prayer book, *Minhag America*, and he founded the Union of American Hebrew Congregations (now Union for Reform Judaism) and our rabbinical school, Hebrew Union College–Jewish Institute of Religion, as well as the Central Conference of American Rabbis. His 200th birthday is an apt moment in time to return to our roots, reassess our history, and reconnect to our core values.

In that spirit we have created using materials from our movement our first adult Confirmation class. This class will provide an opportunity for in-depth learning for those who have already had the opportunity to share an adult B’nai Mitzvah. The curriculum comprises sessions about the history, theology, and core values of Reform Judaism. This curriculum familiarizes students with the core ideas of the Reform Movement, and invites a variety of different texts and voices into the conversation. Topics include: history, ethics, justice, spirituality and ongoing revelation. Using the latest Reform movement anthology, we will engage in meaningful study and conversation. We hope that you will join us!

B'Shalom, Rabbi Peter Rigler
rabbi@temple-sholom.org

Adult Confirmation

Tuesdays 6:00 - 7:30 p.m.
(bring your own dinner
and eat during class)

March 3, 10 & 24
April 21 & 28
May 5, 19 & 26

NOTES FROM CANTOR JAMIE MARX



Find Your Inner Queen

Come find your inner Queen and audition for this year's Purim spiel, *Shushan Rhapsody*! Featuring the music of Queen, it's a high energy and very singalong-able show that'll be fun for the whole family. I'm so excited to bring our congregation together to celebrate Purim with music, laughter, and of course hamentaschen.

And we need you to make our Purim spiel possible! We need actors of all ages, but particularly teenagers and adults, to bring the story to life. We perform "script in hand," so you can focus on delivering the hilarious lines rather than memorizing them. We have roles with lots of singing, we have roles with just a little singing, and we have roles for those who prefer not to sing. It's a great opportunity to meet new friends in the congregation and have a ton of fun. All you need to bring is enthusiasm and energy!

So join us for auditions on January 26 from 1:00 p.m. No previous experience required, and for the audition you may choose to prepare any song of your choice. (Don't have a song? You can always just sing *Happy Birthday*!)

~ Cantor Jamie Marx
cantor@temple-sholom.org

Shushan Rhapsody

Auditions:
**Sunday, January 26 at
1:00 p.m.**

Rehearsals
(Sundays at 1:00 p.m.)

February 2, 9, 23
**March 1 & 8 (dress
rehearsal)**

Monday, March 9 at 7 p.m.
It's show time

TANAKH SCHEDULE

Most Wednesdays
10:30 a.m. - 11:30 a.m.
at the Temple

Facilitated by
Rabbi Rigler

Open to members, guests,
non-Jewish friends,
Atheists; basically
ANYONE!

***no previous knowledge
necessary**

DIRECTOR'S CORNER



Dear Friends,

As our secular New Year begins and we find ourselves deep in our winter months, please know that we are here for you. If you have a moment, stop by the Temple office at any time, even during the week day. We would really enjoy spending some time with you.

Shortly our budgeting process for our new year (our new fiscal year begins July 1st) will begin. All aspects of the Temple's income and expenses are very carefully considered. We rely upon input from our Treasurer, Marc Albero, our Financial Secretary, Emily Mendell, our budget committee, our lay leaders, committee chairpersons and our staff.

Together we work very hard to create a well thought out, meaningful, values laden and balanced budget.

If you are interested in expressing your views on our budget, now is a good time to do so. Please contact me or Marc Albero, malbero1@verizon.net so that we can take your suggestions and thoughts and utilize them in our budget discussions and process.

Thank you for being a part of our Temple Sholom community. We are incredibly appreciative you are here with us and that we continue to create a warm (even during these winter months) and vibrant community together.

~ Warmly Abbey Krain
Executive Director
director@temple-sholom.org

BRINGING OUR COMMUNITY TOGETHER



Happy 2020 to all of you! I hope you had a wonderful holiday season. I cannot believe that it is a new decade, and we are in the thick of winter. I know it is cold out and there may be snow on the ground, but remember that Temple Sholom has many exciting things for you (and they are indoors in the warmth)! Don't miss auditions for this year's Purim Spiel, *Shushan Rhapsody*! Inspired by the music of Queen! Auditions will be held on January 26. Page 27 has more information. As part of our continued partnership with The Jewish Book Council, Sisterhood and Sisterhood Book Club are sponsoring an evening welcoming author Myla Goldberg. She will discuss her new book *Feast Your Eyes* and be doing a book signing. Page 26 has all of the details. We hope to see you for Terrific Tricky Trivia Night, a Preschool fundraiser back by popular demand! It is consistently one of the favorite events of the year. See page 31 for all things trivia. There's so much more going on these next few months that you have to check our website and Facebook for! From all of these to PreShabbat Yoga to Inclusion Shabbat and so much more. Please come by and say hello anytime! My door is always open to answer any questions you have about upcoming programs, Temple events, or anything non-Temple related. Stay warm!

~ Marissa Kimmel
community@temple-sholom.org

WE ARE STILL K'VELLING!

The Temple Sholom Board continues to bask in the glow of the remarkable gala weekend held in late October to recognize the tenth anniversary of the investiture of Rabbi Peter Rigler as our spiritual leader. We always knew that our close-knit community would rise to the occasion when asked but, this time our wildest expectations were exceeded as we saw this fabulous celebration enhanced by a record-setting fundraising effort.

We had initially set an ambitious goal to raise \$250,000 so that we could retire our principle mortgage and save approximately \$45,000 in principal and interest payments each year. But then the Annex flooded and we knew we needed to raise even MORE money fast or risk losing the critical space that building provides. Through an incredible community effort and outpouring of philanthropic spirit we raised \$355,000. After the mortgage and the event expenses were paid, the remaining \$120,000 was placed in an escrow fund to be used to renovate the Annex.

The congregation has entrusted us, the Board, with the immense honor and responsibility of tending to the safety and comfort of our building and grounds. Over the past few years, as Temple Sholom's facilities have begun to show their age, you have responded to our fundraising appeals with generosity and compassion and, for that, we are so grateful and appreciative. We look forward to sharing with you many more years of worship, learning and celebration in our spiritual home.

B'Shalom,
Steven L. Granoff, Chair, Gala Committee
Laurie Browngoehl, Board President

WELLNESSQUAD CONTINUES ITS IMPORTANT WORK

Thank you to Laurie Waskovich, Registered Dietician, for her extremely informative discussion about the health benefits of eating real and minimally processed food. The WellnesSquad presents programs on a regular basis that are both hands-on and informative. Everyone is welcome. All events are free of charge, but a \$5 donation is asked to help defray speaker and program expenses.

Our programs will continue in this year. Please join us on Friday evening, February 10th at 6:00 p.m., for some fabulous YOGA prior to Shabbat services. Details will be forthcoming.

Would you like to suggest future events, or do you have questions? Contact Terri Watson at terriwatsontrainer@gmail.com.

KESHET-AT-TSB TASK FORCE

Did you know that Keshet, a national volunteer organization, dedicates itself to promoting LGBTQ equality in all facets of Jewish life? Keshet works for the full equality of LGBTQ Jews and their families in Jewish life. Toward that end, Keshet has worked nationally to support leadership development among LGBTQ Jewish teens, to train clergy, synagogue teams, and Jewish educators to celebrate LGBTQ Jewish identity and prevent anti-LGBTQ bullying, and to mobilize Jewish communities to protect marriage equality and transgender rights.

Over the past few years, Temple Sholom clergy and staff have participated in trainings provided by Keshet, and have indicated a desire to bring Keshet-motivated work to our own community. The Keshet-at-TSB task force began a few years ago and focused on increasing opportunities for education and awareness at Temple Sholom.

The Task Force is interested in revisiting some of this work - if you are interested in being involved, contact us at maryyourke2@gmail.com. We can let you know about future meetings and opportunities to be involved.

~ *Mary Rourke*, Task Force Leader

CELEBRATING JEWISH DISABILITIES AWARENESS & INCLUSION MONTH

Temple Sholom is delighted to welcome Dr. Mark Salzer on February 7th for our annual JDAIM Shabbat service. Dr. Salzer will be speaking about the inclusion, welcoming, and embracing of individuals with mental illness.

Dr. Mark Salzer is a psychologist and Professor of Social and Behavioral Sciences in the College of Public Health at Temple University. He is also the Principal Investigator and Director of Temple University Collaborative on Community Inclusion of Individuals with Psychiatric disabilities, a rehabilitation research and training center funded by the National Institute on Disability, Independent Living, and Rehabilitation Research since 2003. Dr. Salzer is an international expert on inclusion of individuals with mental illnesses, including in faith communities. Please join us for this amazing opportunity to learn about this important issue, since mental illness is one of the "invisible" disabilities that are often misunderstood so that we can improve our

efforts to be welcoming to Temple Sholom congregants with mental illness.



Representatives from local mental health organizations will be available in the lobby during the JDAIM Shabbat Service on February 7, 2019. We are proud to welcome the American Foundation for Suicide Prevention - Greater Philadelphia Chapter and the D-MAX Foundation (founded by TS members Lee Maxwell and Laurie Burstein-Maxwell) that establishes DMAX clubs on college campuses for support of students with mental health issues.

Visual Tifillah will also be part of the service on February 7th. Check announcements for other Shabbat services featuring Visual Tifillah. Please remember, if you need assistance with accommodations for special needs for yourself, a family member, or a guest, please contact either Abbey Krain, Executive Director or Regina Levin at inclusion@temple-sholom.org or call her 610-715-1745.

JANUARY AND FEBRUARY ONEG SPONSORS

January 10

Trevor in honor of his sister Alex's Bat Mitzvah

January 17

The Gold Family in honor of Lillian's Bat Mitzvah

January 24

The Haenn Family in honor of Justin's Bar Mitzvah

February 28

The Feldman Family in honor of Julia's Bat Mitzvah

Many thanks to the Gusdorff Family for sponsoring the oneg on November 22, in honor of the recent mikveh of Caroline Saxe Hawkins (Gavriela Netanya)

And to the *Gesherim* Families for sponsoring the December 13th Oneg

Celebrating a Simcha?

Honor your loved ones and the Temple by sponsoring an Oneg and sharing your special day with us.

A birthday, anniversary, baby naming, or marriage blessing are all perfect occasions.

Please contact the Temple office at 610-356-5165 or

Info@temple-sholom.org for details.

SANCTUARY CHAIRS

We now have a very special way to honor your special occasions here at Temple Shalom. If you are celebrating a special occasion such as Bar/Bat Mitzvah, Birth, Birthday, Wedding, Anniversary, Baby Naming, Graduation, or any other special event, share your simcha with your Temple Community.

Sanctuary Chairs

Share your happiness with our Temple Family. A plaque will be engraved and placed on the back of a sanctuary chair with a joyous message,

For more information, contact chairpersons,
Alan & Deb Kirsch.

Alan Kirsch: alkirsch@gmail.com
Deb Kirsch: dkirsch2788@icloud.com
Home number: (610) 933-6192

Cost: \$180

I wish to purchase a plaque to be placed on a Sanctuary chair. I have enclosed a check in the amount of \$_____.

The following is to appear on the plaque (please print clearly). Please note the limit of characters/spaces per line as noted on each line.

22 spaces _____

19 spaces _____

22 spaces _____

19 spaces _____

Your Signature

Phone #

SAVE THE DATE!

Scholar-In-Residence*

April 17-19

Rabbi Richard Address

Jewish Sacred Aging

Topics:

- Parenting as they grow up
- Surviving the flood of caregiving
- Respectful approaches to memory decline and end of life decisions



***Please consider making a donation to the Scholar-in-Residence fund. It is with your continued generous support that we are able to bring top**

SISTERHOOD WOMEN CONTINUE THEIR BUSY TEMPLE SHOLOM YEAR



Our Sisterhood Welcome Dinner was a big success! Approximately 50 friends joined for a delicious dinner, a super sing-a-long led by women of the adult choir, a tribute to Linda Phillips and

The Gift Garden, and the

beginning of a partnership with members of the Elders Circle, who hail from Africa and the Caribbean, and who meet together in Upper Darby.

Besides the Carlino's catered meal, the evening featured sales of items from The Gift Garden (modeled by Sisterhood Board Members), and a table full of handicrafts from the Elders Circle. Our attendees also gave generously of household goods for HIAS-PA, and gloves and hats for another drive.

Many thanks to Lori Rowling and numerous other committee members of Sisterhood for organizing this fabulous evening.

In mid' December, Sisterhood members joined their new Elders Circle friends in Upper Darby to lead them in a traditional celebration of Hanukkah, followed by a sharing of their holiday customs from their native lands.

Game Night was another successful evening. Besides one table of Mah Jongg, we played several other games and enjoyed great refreshments. As in past years, we stayed beyond the time we had allotted for this, because we were having so much fun. Thank you to Sharon Goldman for chairing this event.

We're all looking forward to *Feast Your Eyes*, by Myla Goldberg for January 9, 2020, at 7:30 p.m. in the Temple library. Sisterhood Book Club will discuss this first. Sisterhood has purchased two copies of every selection for our Temple library for your reading enjoyment.

And, speaking of Sisterhood Book Club, Sisterhood is partnering this year with the Book Club to welcome renowned author Myla Goldberg to Temple Sholom as part of the National Jewish Book Council program. We will open up this Educational Event to the entire congregation on Saturday evening, January 18, 2020 at 7:00 p.m. The author will be coming in from New York City to discuss her new book, *Feast Your Eyes*. Copies at a discounted price are available in Marissa Kimmel's office. Be sure to bring your copy for an author signing on January 18th. Special refreshments will be offered that night.

The March 12 Sisterhood Book Club selection will be *The Last Jew*, by Noah Gordon. Happy reading, everyone!

Hopefully, you enjoyed the second year of Sisterhood's Hanukkah Preneg. This year, costumed Sisterhood members prepared and served potato latkes (potato pancakes) along with applesauce and sour cream, and jelly-filled soufganiot (donuts). Our Preneg was held prior to the Shabbat Hanukkah service.

A wonderful way to make new friends and cement former friendships is to become involved and serve on a Sisterhood committee. We'd love to include you as part of Sisterhood's planning process. No experience is necessary, of course, because all our committees are comprised of women who have served before, as well as those who might be new to Sisterhood organizing.

We have several other programs in the works as well, including a follow up to last year's Challah Baking with Chabad. On April 26, 2020, at 7:00p.m., we'll be participating in another Cooking with Chabad event. Yum...who doesn't love rugelach?

Stay tuned to a congregation-wide speaker event sponsored by Sisterhood to take place on Sunday, June 7 at 2:00 p.m., featuring Galia Godel, on a timely update on all things LGBTQ. We are also planning a trip to Kilwin's Chocolate and Sweet Shop in Ardmore for an evening of creating our own chocolate (and other customized) bark. Yum ... can't wait!

Be sure to take advantage of our wonderful Happiness and Memorial greeting card program, or purchase a Jewish National Fund tree. These are ways to reach out to congratulate somebody, or to mark a lifestyle event. Contact Shirley Birenbaum at surabassa@aol.com or call her at 610-328-2171. Sisterhood members may purchase these cards or trees at discounted, competitive rates that include postage and addressing.

Sisterhood's gift shop, *The Gift Garden*, is located across from the Temple Office. It is open throughout the school year with regular hours listed on the door, or by special appointment. Your gift needs can always be met! For examples of merchandise, go to the Temple Sholom website, then Community, then Gift Shop. Sisterhood members are entitled to a nice discount on all Gift Garden inventory.



Do you have any questions or concerns? Are you ready to sign up for a committee? Direct your correspondence to sisterhood@temple-sholom.org. Your response will arrive shortly.

**Remember, our Sisterhood
is YOUR Sisterhood.
Without you, we are one
woman short.**

CULTURE CLUB

Culture Club Gears Up for Super Bowl Party, Gets Ready to “Punch & Brunch”

Following a successful night of Roman-Jewish Cuisine at Tiramisu, Culture Club is getting ready to celebrate Super Bowl Sunday on February 2 at the Malvern home of Penny and Jeff Toren. The Toren's will be cooking up their famous chili and they invite Culture Club members to bring a meal, snack or beverage to share to watch the big game.



RSVP to Penny and let her know what you are bringing at pennytoren@gmail.com or 610-844-8878. Start a new Super Bowl Sunday tradition by joining Culture Club on February 2

Looking ahead, Culture Club is finalizing dates for “Punch & Brunch,” an opportunity to learn some boxing skills in a real boxing studio, followed by a yummy brunch. More details coming soon!

Have great ideas for Culture Club? Your Committee Chairs want to hear them! Email us at our contact info below:

Grace Gherovici -
lagacorreio@hotmail.com

Leza Raffel -
leza@comsolutionsgroup.com

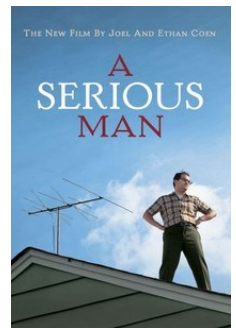
Penny Toren- pennytoren@gmail.com

HILLTOPPERS: ENJOYING EACH OTHER AND LEARNING TOGETHER

Members of Hilltoppers enjoy the Book Discussion Group, afternoon and evening programs, and monthly board meetings. Under the able leadership of President Cindy Meyer, we work together and enjoy each other's company.

We wanted to let you know that Hilltoppers is delighted to offer you giving opportunities. Would you like to honor a friend or loved one? Or, perhaps mark a sad occasion of someone in your life? Your donation will be gratefully received and acknowledged with a lovely thank-you note.

On January 16 at 2:00 p.m., Hilltoppers are Going to the Movies ... in the Multipurpose Room. We can't wait for Film Critic (and Temple Sholom member!) Stephen Silver to lead us in a review of the well-received Coen Brothers' 2009 comedy, *A Serious Man*. Popcorn and light refreshments will be served.



There isn't a February program, but the March 26 program is going to be absolutely amazing. Mark your calendars for this second afternoon program, which will begin at 1:30 p.m. Jane Peters Estes, an historical reenactor, will reenact *The Battle of Gettysburg*.

The Book Discussion Group will be meeting on January 9 at 1:30 p.m. in the Temple library to talk about *Not Our Kind*, by Kitty Zeldis. We also look forward to the February 13th selection, *The Turner House*, by Angela Flourney. Remember, two copies of every Hilltoppers book are available in the Temple Sholom library.

Please feel free to join us for our monthly board meetings. We welcome everyone to have a say in the business of our auxiliary. We will be meeting in the Temple library at 10:30 a.m. on January 2 and February 6.

Also, we'd love for you to invite your friends and neighbors to our programs. All our events are open to the public for just a \$5 donation per program.

If you have any questions, please contact Hilltoppers President Cindy Meyer at cfrogs@aol.com or telephone her at 610-359-1133.



To: Julia Thomas on being awarded The Positive On People Award from Marple Newtown HS for exemplary behavior and effort in the school setting, December 12, 2019!

To: David, Maya & Tobey Rosenberg, who earned black belts in Taekwondo

To: Julie & Greg Shindel & Pam & Dan Haas on the birth of their son and grandson, Carter Jacob Shindel

To: Myra & Alberto Rios on the marriage of their daughter, Jasmin, to Lance Rimes in Tempe, Arizona

To: Lieutenant Marc D. Hendel, Judge Advocate General Corps, United States Navy, has been awarded the Navy and Marine Corps Commendation Medal for meritorious service. Marc is the son of Donna and Steven Hendel.

To: Vera Neumann-Sachs & Paul Sachs on the birth of their grand-nephew, Lincoln Thomas Talavera

To: Alan & Jodie Gold on the birth of their granddaughter, Ida Rebecca Russell

Let's share our happy occasions, milestones and good news with one another.

**Please submit your information (anniversary, birth, graduation, honor, new job, etc.)
by Tuesday
of each week to our Temple office:**

director@temple-sholom.org.

RELIGIOUS PRACTICES COMMITTEE

The Religious Practices Committee (RPC) has been meeting on a semi-regular basis to discuss and make recommendations on ritual issues. The committee met recently with Rabbi Rigler and Cantor Marx, analyzing the observance of Temple Sholom's High Holy Days, and discussing upcoming giving opportunities, revision of Board of Directors' ushering responsibilities, the new congregational tallit, and future Jewish holiday celebrations within our Temple Sholom community.

If you would like to join the RPC, or believe you have issues that should be discussed, please contact Donna Hendel at DonnaHendel@gmail.com. All suggestions are reviewed and taken under consideration.



Temple Sholom Fundraiser

Come into the Temple to receive a Farm Fresh Family card. Use it when you stop by Swiss Farms and you will receive a discount on many items. In addition, Temple Sholom will receive 3% cash back on a quarterly basis based on your purchases.



CONVERSATIONS WITH MEN

We meet on Sunday mornings 9:30 a.m. to 11:00 a.m. during Religious school hours so you can join us after you drop off your kids at *Rimon*.

Join us on January 5th when we will be joined by the Rabbi to discuss Spirituality and Racism.

In February join us for a discussion on Spirituality and Voting Rights.

~ Daniel Endy
daniel.endy@gmail.com



CHAIMEN



The Chaimen is Temple Sholom's softball team playing in the Main Line Men's Softball League. We've had many members of the Temple play with us over the years, and we are always looking for more players. If the softball bug HITS and you are interested in playing on Sunday mornings in a fun and competitive league, please contact me, at larkimseg@gmail.com or 215-694-3431.

The Manager, *Larry Segal*

INVITATIONS FOR ALL OCCASIONS!

Bar/Bat Mitzvah

Wedding

Newborn Announcements

Stationery

Save the Date

Contact Nancy at 610-417-5918
or haz@comcast.net
for more information

BROTHERHOOD



The Temple Brotherhood is looking for members to join us as we continue to rebuild and expand our activities at Temple Sholom! If you are interested, please be sure to send in your member registration to the Temple. If you have any questions or need a new enrollment form, please contact Dave Mendell at: brotherhood@temple-sholom.org.

~ Dave Mendell, Brotherhood President

WOMEN'S SPIRITUALITY



Please join Women's Spirituality in the Temple library on Wednesday, January 22nd at 7:30 p.m. when Anna Marx will be bringing her program "*Has Judaism Crashed? How a queer talmud study changed the way I see Jewish community.*" Don't miss this opportunity to discuss this very interesting and intriguing topic.

Rabbi Shelly Barnathan will be returning to Temple Sholom on Wednesday, February 26th when she will be bringing her program about "*The New Month of Adar and Parshat Terumah - Creating Joy and Holiness in our Lives.*"

When Adar Comes – Joyfulness Reigns!!
When Adar Comes, Joy Is Increased!!
Adar Is Here Be Happy!!

Adar is the happiest, most joyous month of the Hebrew calendar. In fact, its motto is "When Adar comes, joy is increased." The Talmud tells us that "when the month of Adar arrives, we increase in joy" to welcome a season of miracles.

Parashat Terumah

Terumah in Hebrew means "gift" or "offering." Terumah opens with a call for the Israelites to bring to God what the standard English translation calls "gifts."

Please join us in the Temple library on February 26th at 7:30 p.m. as we explore "*Creating Joy and Holiness in our Lives.*"

Re-capping our last two months together when we met with Rabbi Tsurah August on November 20th at 7:30 p.m. as she presented her program "*Moving Witness.*" It was a body-centered mindfulness practice which included movement, working in pairs, journaling and sharing with a closing ritual.

Rabbi Leah Berkowitz returned to Women's Spirituality on December 18th when she presented her program "*Can a Husband Die from Disappointing His Wife?*" The Talmud tells us, "Yes!" We explored a series of stories about how the rabbis tried to balance their devotion to Torah with their obligations to their families, and what happened when, often, they failed.

Planning ahead for our Book Discussion on March 25th we will be discussing *The Tattooist of Auschwitz* by Heather Morris. The book is based on the powerful true story of love and survival. A story of two ordinary people, living in an extraordinary time, deprived not only of their freedom but their dignity, their names, and their identities. A personal account of what they needed to do to survive.

Women's Spirituality offers many opportunities to share and learn together. Please mark your calendars to join us on Wednesday, January 22nd with Anna Marx and February 26th with Rabbi Shelly Barnathan. We look forward to seeing you in the Temple library.

WITH GRATITUDE FROM AMY BERKOWITZ AND FAMILY

I'd like to thank all the Temple Sholom members who supported my family through this challenging and sad time in our lives.

Thank you to my Rabbis Mayer [Selekman] and Peter [Rigler] who's numerous hospital visits helped us have some of the "difficult" conversations. We also shared history of meaningful and wonderful times together.

Thank you for all your generous donations to Temple Sholom! Every day our mailbox is overflowing with donations from you. Temple Sholom was always our second home and will continue to be as I navigate through my life without David.

Thank you to all the people that traveled to Leah's synagogue, Kol Ami and to Danny's home to share shiva with us. I was overwhelmed with your love and support while I was sitting shiva. You really went "the extra mile" for my family.

Thank you for all of those loving arms that hugged me at David's funeral, at the meal of consolation and then my first Friday night back at services without David. I don't know how people do this without a loving Jewish community. I will be forever grateful to my community and Temple Sholom who has danced with us at our simchas and is now grieving with me.

~ Amy Berkowitz and Family

PRESCHOOL NEWS

Our favorite books!

I always loved to read. As a child I would ride my bike to the local library, read a book, check out another one, and head home to read again. We did not have the options and the multitudes of titles that are available now. I read the same ones over and over again. Now, a child could read a different book every day and not have to repeat titles.

Everyone has a book or author they remember from childhood, something or someone that stands out and brings a smile to their face. For me, *Make Way for Ducklings* by Robert McCloskey when I was young; Judy Blume books (*Superfudge*, *Are You There God It's Me Margaret*) as I got older. But my all-time favorite book was *Bridge to Terabithia* by Katherine Paterson. I have probably read the book dozens of times and could read it again today without being bored.



In early childhood education, one of our primary goals is to give children a love of learning. And a love of learning is a love of books and stories. We read books and tell them stories every day. We introduce new authors and titles, subjects and characters. We read books during circle times and one-on-one with children sitting with the teachers. We read classic authors (Eric Carle, Leo Lionni, Maurice Sendak, Dr. Seuss) and newer authors (Mo Willems, Peter Reynolds, Vashti Harrison). We read fiction books and non-fiction books. We read picture books and *The Book with No Pictures* (BJ Novack).



And we are fortunate that organizations such as **PJ Library** exist to get Jewish books into the hands of young children. Between *PJ Kids* and *PJ Goes to School*, there are Jewish books for every subject and topic and they become student favorites.

Books create a new world. They educate. They inspire.

*"The more that you read, the more things you will know.
The more that you learn, the more places you'll go."*
~ Dr. Seuss



We asked our staff, what is your favorite childhood (young child or teen) what their favorites were. Here are their answers.

Nertila Kocibelli - *Goodnight Moon* by Margaret Wise Brown

Rachel Thomas - *Tuck Everlasting* by Natalie Babbitt

Natalie Pizzi - *The Biscuit Books* by Alyssa Satin Capucilli

Lauren DiTrollo - *The Babysitter's Club* by Ann M. Martin

Joanne Nathans - *Pippi Longstocking* by Astrid Lindgren

Jodi Fabius - *The Red Balloon* by Albert Lamorisse

Albana Leskaj - *The Little Prince* by Antoine DeSaint Exupery

Marisa Gilchrist- *The Arthur Books* by Marc Brown

Latoya Baker - *The Berenstain Bears* by Stan and Jan Berenstain

Samantha Papurt - *To Kill a Mockingbird* by Harper Lee

So what is your favorite book?

~ Lori-An Penchansky
Early Childhood Education Director
preschool@temple-sholom.org
610.886.2065



Temple Sholom's library has a large selection of wonderful books for children. The library is open during *Rimon* on Sunday mornings and is available during the week to look at and check out books.

In the Temple's lobby there is a rack with PJ Library books for you to take home and keep. These books have been donated by families whose children have outgrown the books.

Reading and being read to is a wonderful experience!



Engaging with Israel

The overarching focus for *Rimon* this year is ***The Epic Journey: From the Garden of Eden to Modern Israel***. Our

learners delved in the stories of our ancestors from Adam and Eve to the Israelites standing on the precipice of entering the Promised Land. Now, it is time to actually “visit” the Promised Land.

Recently, I had the opportunity to visit the Promised Land ... or, more accurately, the Lived Land. Today’s Lived Land of Israel is often described not as a “melting pot” but as a “tossed salad.” Jews, Arabs, Christians, Druze, Bedouins and immigrants from all over the world occupy this tiny land, each bringing their own cultures, beliefs, and language to create today’s Lived Land. The purpose of this journey was to explore diverse narratives in order to bring the stories and learning home to our *Rimon* learners. Using questions posed by many of our *Rimon Noar* teens, I focused on what is most meaningful for them including daily life, school, music, safety issues and more.

As I reflect on this impactful and amazing experience, I cannot help but recall the words written by Barry Chazan in *The Alef-Bet of Israel Education*, “Israel today lends itself to diverse vantage points, perspectives, and ‘tellings’ of the story. Indeed, the diverse pictures of Israel are in some ways the essence of life in Israel. The richness of Israel is that everyone is a narrator, and everyone is a photographer ...” This experience enabled me to become both a photographer and narrator of this story. On many trips in the past, I had observed Israel either through my own eyes or the eyes and lens of the teens who I chaperoned while on their first visit. This experience enabled me to change that focus and see Israel through the lens of teens who actually live and breathe the land each and every day.

I have learned much during this experience having encountered and interacted with teens of very diverse narratives. I do recognize, though, that one narrative in not itself does represent



the whole of a group. Taking a deep dive into multiple narratives in a short period of time does not do justice to the entire story ... or even a slice of it. Yet it does open a window into the complexity and hopefulness that exist in tension with each other.

Over the next few months our *Rimon* learners will take a deep dive into the culture and the people of Israel. They will explore all that is wonderful to make this tiny slice of land an important of their own narrative.

~ Lori Green, Director of Education
educator@temple-shalom.org

Mark Your Calendars....

Friday, January 10
Gimel (5th gr.) Class leads Shabbat Worship
Special PreK – 2nd gr. “Camp Shabbat” experience

Sunday, January 19
NO SUNDAY *RIMON* – MLK Holiday

Monday, January 20
NO MONDAY HEBREW, *NOAR*, JLF – MLK Holiday

Tuesday, January 21
NO TUESDAY HEBREW – MLK Holiday

Thursday, February 13
JLF Teens – Civil Rights Trip/Experience

Sunday, February 16
NO SUNDAY *RIMON* – President’s Wknd. Holiday

Monday, February 17
NO MONDAY HEBREW, *NOAR* - President’s Wknd. Holiday

Tuesday, February 18
NO TUESDAY HEBREW - President’s Wknd. Holiday

Saturday, February 29
4th Grade “Naming Service”



TEMPLE SHOLOM TEENS SELECTED FOR URJ TEEN SONGLEADING FELLOWSHIP

SHANA DEITZ



Shana is a sophomore at Great Valley High School. Music is one of her passions, as is Temple Sholom. She loves being a songleader, helping with Kol Shalom, and being on the Temple Youth group board. She is honored to be one of the 30 teens in the URJ North America Teen Songleading Fellowship, and is excited to bring all of her learning back to her work at Temple Sholom.

EMILY SCOLNICK



Emily is a sophomore at The Shipley School, where she is a member of the Glee Club, the a cappella group Shipley Singers, and the cross-country team, as well as a writer for the school newspaper. Outside of school and her songleading activities at Temple Sholom, she enjoys reading, writing, and spending time with her friends, her family, and her cats.

What is the fellowship? The URJ Teen Songleading Fellowship invited young Jewish songleaders to develop their songleading skills, deepen their knowledge of repertoire and communal singing technique, and build meaningful leadership and relationship opportunities in their congregations, camps, and communities. Open to Jewish 10th – 12th grade teens from around North America, this is a prestigious application-only, nine-month Fellowship. Only 30 teens were accepted from around the country, two of which are Temple Sholom Teens!

B'NAI MITZVAH

Lillian Gold, daughter of Erin and Evan Gold, will celebrate her Bat Mitzvah on Saturday, January 18. Joining in this celebration will be her proud parents, brother Ethan, sister Sutton, and grandparents, family, and friends from nearby in the Philadelphia area and from California, New York, and New Jersey.



Lillian is a 7th grade student at Haverford Middle School. Outside of school, Lillian is active in competitive gymnastics and dance. Her hobbies include baking, hanging out with friends, and braiding hair.

For her Bat Mitzvah project Lillian volunteered at the Brandywine Valley SPCA where she helped in the caregiving of dogs and cats. This included walking and playing with animals, cleaning and sanitizing the facilities, and helping these pets in their transition to a permanent home. Lillian's Bat Mitzvah also falls on her thirteenth birthday.



Julia Feldman, daughter of Elizabeth and Paul Feldman, will celebrate her Bat Mitzvah on February 29th.

Sharing with her will be her brother Alexander, grandparents Barbara and Richard Simon of Little Meadows, PA, grandfather William Feldman of Wayne, NJ, along with other friends and relatives.



Julia is a 7th grade student at Strath Haven Middle School, where her interests include: dancing, playing the ukulele,

baking, arts and crafts, and going to URJ Eisner Camp every summer.



EISNER CAMP
A URJ SUMMER CAMP

Describe your Mitzvah Project in a paragraph or two: My mitzvah project is two-fold and serves the two communities in which I spend the most time. The first is walking dogs at the Providence Animal Shelter. It is important to me that animals who have not yet found a forever home have the opportunity to feel cared for and can get outside of their enclosures.

The second is making and selling bracelets. I am sending 100% of sales to the Eisner Scholarship Fund so all who would like to attend camp can do so. Camp is such a magical and impactful place and socio-economic status shouldn't determine who gets to attend and be part of that community.

Any other information you would like to share? I moved to Swarthmore from Manhattan in August and I am looking forward to meeting more people in my new community!



RIMON LOBBY CAFÉ

Sunday Rimon Café Partnership!

Better than Starbucks!

Better than the Grocery Store!

Our popular Sunday Rimon Café gives YOU the opportunity to partner with Rimon! Bake goodies! Make a donation! Volunteer on a Sunday morning!

Grab a cup of "joe", have a morning treat, and spend your Sunday mornings at our warm and friendly Rimon Café!

All proceeds benefit Rimon and ToaSTY!



CLICK BELOW TO VIEW US ON YELP! WRITE A REVIEW & ADD SOME PHOTOS.

[HTTP://WWW.YELP.COM/BIZ/TEMPLE-SHOLOM-IN-BROOMALL-BROOMALL](http://www.yelp.com/biz/temple-sholom-in-broomall-broomall)



PROVIDENCE
ANIMAL CENTER

TEMPLE SHOLOM'S LEGACY PROGRAM



Becoming a **L'Dor V'Dor Legacy Member** is a simple process that has a significant impact for our community. To find out how, please contact Elyse Endy at elyseendy@gmail.com or Abbey Krain at 610-356-5165.

Your commitment will help provide for the continued success of Temple Sholom so your children and your children's children can experience the fond memories of the open, inclusive and accepting Jewish perspective at Temple Sholom.



WELCOME TO OUR NEWEST MEMBERS

~ The Winter Family ~

Joysa, Adiel and Zephaniah

SISTERHOOD BOOK CLUB

Sisterhood Book Club is all set up for the coming year. Thanks to those of you that offered suggestions! Here's what we have to look forward to:

January 9
Feast Your Eyes by Myla Goldberg ****
March 12
The Last Jew by Noah Gordon
May 14
Another Time by Jillian Cantor

*** Sisterhood Book Club is joining with Sisterhood to welcome Myla Goldberg to Temple Sholom on Saturday January 18th at 7:00 p.m. It will be exciting to meet this author in person after having read her book. Some of you may be familiar with this author if you read *The Bee Season*. Page 26 has all the details!

We will continue to meet at Temple Sholom at 7:30 p.m. in the library. Please let me know if you would like to lead the discussion on any of the above evenings. New readers are always welcome so pass the word! Excited for another good year!

~ Michelle Cooperstein teachercoop@aol.com

GET WELL. STAY WELL.

Do you prefer natural healing over prescriptions?
Do your health issues drag on and on?
Is it time to handle the cause instead of the symptoms?
We can help.

centerfornutritionalhealing.com • 484-938-7691

Cindy Harrington, CNC, CHS, CINHC, CYT



CENTER FOR NUTRITIONAL HEALING
GET WELL. STAY WELL.

HELP OUR PRESCHOOL

Our school is growing!

Now we need more staff!

Come join our fun and friendly team!

We are looking for Assistants and Aides to work in our school. Must have a minimum of a HS degree, be willing and able to get low to the ground and lift up to 30 pounds.

Contact:
Lori-An Panchansky
Preschool Director
preschool@temple-sholom.org
610-886-2065

We are looking for full or part time and very willing to split any of the hours 8:00 a.m.- 5:30 p.m. Perfect job for someone who loves children and is looking to get back into the workforce.



ToaSTY

ToaSTY had wonderful first half of the year! Escape rooms to Philly food and history tour to a shul in! Teens have had lots of fun bonding. The teen board has been hard at work to have a fun year for everyone, and they have done a great job. We are always eager to welcome new people to events and hope the teens come out for them! Be on the lookout for upcoming events. If you ever have any questions, please don't hesitate to reach out!



**Follow us on
Instagram
@warm.and.toasty**

Questions? Contact any of the
ToaSTY Board members
or Marissa, the
ToaSTY Advisor, at

toasty@temple-sholom.org.



JR. TOASTY
6TH—8TH GRADERS
JR. JR. TOASTY
4TH & 5TH GRADERS

Please keep an eye out for flyers, evites and/or the use of Remind App for details on upcoming events.

Questions? Contact the Temple Office
at 610-356-5165



SISTERHOOD HAPPINESS & MEMORIAL CARDS

Did you know that Sisterhood can handle all of your "Hallmark" needs? For \$5.00, you can send a Happiness/Memorial Card for any occasion, including birthdays, get well, sympathy, etc.

To: Amy Berkowitz & Family
From: Sharon & Charles Goldman
Barbara Clarke
Cindy & Jim Meyer
Shirley & Marty Birenbaum
Temple Sholom Sisterhood

*Condolences on the death of David Berkowitz,
beloved husband & father*

To: Joshua Young
From: Temple Sholom Sisterhood
*Mazel Tov on the Bat Mitzvah of your daughter,
Alexandra Young*

To: Randy Weinstein
From: Temple Sholom Sisterhood
*Mazel Tov on the Bat Mitzvah of your daughter,
Alexandra Young*

To: Evan & Erin Gold
From: Temple Sholom Sisterhood
*Mazel Tov on the Bat Mitzvah of your daughter,
Lillian Gold*

To: Peter & Mindy Haenn
From: Temple Sholom Sisterhood
*Mazel Tov on the Bar Mitzvah of your son, Justin
Haenn*

To: Paul & Elizabeth Feldman
From: Temple Sholom Sisterhood
*Mazel Tov on the Bat Mitzvah of your daughter,
Julia Feldman*

To send Happiness & Memorial Cards
call Shirley Birenbaum at 610-328-2171
or email her at surabassa@aol.com

Cards are \$5.00 each
(this includes postage)

DO A MITZVAH!

B'nei Mitzvah students have the opportunity to perform hands-on mitzvot in the months leading up to their important life cycle event. What about our adult members at Temple Sholom?

There is a group at our Temple that could really use your help - become part of the Mitzvah Core team!

We need volunteers to add their names to the list, to be ready for a phone call or an email when another congregant needs help: a ride, a phone call, a visit, a meal, or shiva help.

Please contact Mitzvah Core coordinator Barbara Barr at bbooker628@aol.com or 484-412-8066.

When you brighten someone's day, you brighten your own life! Guaranteed!

MITZVA

JUST DO IT.

JNF TREES AND WATER FOR ISRAEL

Sisterhood Supports JNF by planting trees in Israel and/or contributing to the JNF Parsons Water Fund to alleviate their severe water shortage

Planting trees in Israel helps to create green forests in previously barren land. Contributing to the Water Fund helps in the building of water reservoirs and dams which provide life-giving water to more than 1.2 million Israelis.

Tree Purchases begin at \$18.00 each and contributions to the water shortage also begin at \$18.00.

Consider acknowledging birthdays, weddings, anniversaries, graduations, bar & bat mitzvahs, confirmations, and other occasions in this very special way. This is also a way to honor and/or remember the memory of dear friends and loved ones. The honoree will receive a lovely certificate which can be framed for an additional nominal fee.

For further information on contributing to JNF by planting trees or contributing to the water shortage in Israel, call Shirley Birenbaum at 610-328-2171 or surabassa@aol.com.



RECENT DEATHS

Larry Thomas,
friend of Ken Lester

Joyce Fishbein,
friend of Loraine Bailie

Scott Tobin,
father of Sarah Tobin

David Berkowitz,
husband of Amy Berkowitz



MI SHEBEIRACH LIST CONTACT US ONLINE!

Is there someone in your family or in your circle of friends whom you'd like added to our *Mi Shebeirach* list? Your privacy is assured -- we still only print names with permission.

Mi Shebeirach List Online Submission Form is on the Temple Sholom homepage. You can also go to: <http://www.temple-sholom.org/community/mi-shebeirach-list-submission-form>

Bereavement Support Group



We're considering starting a bereavement support group. Please forward any ideas or interest to Harriet Rosenblatt at hbsteacher1@gmail.com

Lobby Collections

We are currently collecting donations for

St. Marks Food Shelter:

dishwashing liquid

toothpaste

deodorant

shampoo

laundry detergent

bar soap

feminine hygiene products

(If you are available to deliver our collections to St. Marks in Broomall, please call the Temple Office)

We are collecting for The ***Domestic Abuse Project of Delaware County (DAP)***.

They are in dire need of:

new scarves, mittens, winter hats, diapers (all sizes), wipes and baby bottles.

Ongoing needs include:

women's sanitary products and toiletries

We continue to collect pots / pans / kitchenware items, glasses, dishes, gift cards & comforters for

The Nationalities Service Center

This organization provides comprehensive services to refugees and immigrants from around the world. <https://nscphila.org/stories>.

We have knitters—We need Wool

Please leave your donations in the Temple office marked for Amy Berkowitz . She has knitters ready to crochet and knit blankets for hospice patients

MITZVAH MEALS



On the second Tuesday of every even numbered month (February 11), Temple Sholom along with our volunteers serves approximately 150 people at the Life Center of Delaware County. Please take a moment to sign up to donate an item and/or be a server. It is a true mitzvah and we appreciate your generosity.

New Link!

<https://www.signupgenius.com/go/10c044da5ac22aaf85-february>

If the slots are full and you would like to help with a future Mitzvah Meal, please contact Stephanie.

~ Stephanie Albero, Mitzvah Meal Coordinator
Stephalbero061573@gmail.com



Doing Mitzvot in the Community?

Please let us know so we can share your story with the congregation!
Contact the Temple Tidings Editor at

tidings@temple-sholom.org

Join Us For DMAX Foundation's
6th Annual Educational Event

**Self-esteem:
Mind, Media And Mirrors**

Keynote Speaker, EMME
Supermodel, Author & Designer

April 16, 2020

[dmaxfoundation.org/
events](http://dmaxfoundation.org/events)

5:45pm, VIP Reception
7:00-9:30pm, Program



The Baldwin School
Bryn Mawr, PA



DMAX Foundation is a 501(c)(3)
nonprofit. EIN 46-3713176



Creating connections and conversations that matter to strengthen mental health and emotional well-being for young people.

2020 President's Circle Partner:  



SHOP SHOLOM SUPERMARKET & GIFT CARDS / AMAZON

Families! Try Gift Cards online ordering system.

Please use the following code when registering for ShopWithScrip.com

Code: **983DL9A317L72**

Gift cards can also be ordered now through the School Office or during Sunday Religious School hours in the lobby or the easiest and BEST WAY:

Become a regular monthly subscriber!

Contact Marissa in the Temple Office at 610-356-5165 or community@temple-sholom.org

GIFT GARDEN NEWS

Come Visit the Gift Garden for all of your gift needs. The Temple Office staff is happy to open it up for you anytime during normal office hours.

Please call Nancy Hays at 610-417-5918 for your own personal appointment for invitations.

The Gift Garden is always looking for volunteers to help.

Please contact Linda Phillips at 484-431-3724.



Our Caring Hospice

**Trained Temple Sholom
volunteers are here to help!**

**Please call us -
we are here for you.**

**Contact Rabbi Rigler or Cantor Marx
at the Temple or call
Pam Haas 484-802-1186 or
Amy Berkowitz 610-353-8077**

The Social Justice Committee Presents

CONGRESSWOMAN MARY GAY SCANLON

Civil Rights in Our Community:
A Policy Perspective and What That Means to Us

Sunday,
January 12,
2020



1 PM
*Temple
Shalom*
in Broomall

Join us for a discussion with Congresswoman Mary Gay Scanlon on Civil Rights Issues and current policy.

Representative Scanlon, an education and human rights advocate, currently represents Pennsylvania's 5th Congressional District. She was first sworn into the U.S. House of Representatives on November 13, 2018.

Congresswoman Scanlon previously served as national pro bono counsel at a major U.S. law firm, where she directed and supervised over 600 lawyers in 15 offices providing more than 50,000 hours of pro bono legal services annually to low-income clients and non-profit organizations. She also served as an attorney at the Education Law Center, as President of her local school board, and as co-chair of the Voting Rights Task Force of the Association of Pro Bono Counsel.

Congresswoman Scanlon's priorities in Congress include voting rights, education, common sense gun safety legislation, and protecting the rights of children, families, veterans, and our seniors. She currently serves as Vice Chair of the House Judiciary Committee and serves on the Judiciary Subcommittee for Civil Rights.

HILLTOPPERS OF TEMPLE SHOLOM PRESENT



MOVIE MATINEE

JANUARY 16, 2020 | 2:00 PM
EVERYONE IS WELCOME!



Discussion following film led by
congregant Stephen Silver,
Film Critic, Podcaster, and Editor





SISTERHOOD & SISTERHOOD BOOK CLUB OF
TEMPLE SHOLOM PRESENT

MYLA GOLDBERG

SATURDAY, JANUARY 18, 2020

7 PM



Myla Goldberg, award-winning, *New York Times* best selling author of *Bee Season*, will be with us to discuss her newest novel *Feast Your Eyes*. She will also be doing a book signing.

Open to the community!

Books available for purchase in advance or that evening for \$18 through Temple Office. Must prepay to reserve advance copy.

Refreshments will be served during signing.
Checks made payable to Temple Sholom Sisterhood.
Contact sisterhood@temple-sholom.org with questions.



SHUSHAN RHAPSODY

Temple
Sholom
in Broomall

BASED ON THE MUSIC OF
QUEEN

Auditions:

Sunday, January 26
1 PM

Contact Cantor Marx with questions,
cantor@temple-sholom.org





SUPER BOWL SUNDAY

PARTY AT THE TOREN HOUSEHOLD

Sunday, Feb. 2, 2020

Time TBD

THE CHEERING, THE COOL COMMERCIALS, THE FOOD!

Nothing is quite as fun as enjoying Super Bowl Sunday with friends! Penny and Jeff Toren will host Culture Club members for a night of football fun and food at their Malvern home.

WHO'S PLAYING? WHO CARES!

Your admission ticket? Food or beverages to share!



**RSVP to Penny at 610-844-8878 or
pennytoren@gmail.com and let her know what you
are bringing. The Torens will provide chili and fixings!**



YIN YOGA AND HIMALAYAN SINGING BOWL FOR SHABBAT & TU B'SHEVAT

As Tu B'Shevat, the Holiday of Trees, approaches us on February 10, and as we prepare to welcome Shabbat, we celebrate with a therapeutic Yin Yoga class and a Himalayan Singing Bowl concert for peace and relaxation.

Appropriate for all levels. Yin Yoga involves variations of seated/reclining poses typically held for 3-5 minutes. This practice is designed to increase flexibility around knees, pelvis, sacrum, and spine. This program will run for 90 minutes.

Led by Pam Urbas and Andy Duchovnay. Pam is a Yoga Alliance Yoga Teacher who teaches Yin Yoga and is a Reiki Master. Andy is a former EPA attorney and environmentalist who is also Reiki trained. Both are certified Himalayan Singing Bowl Sound Healers who were trained in Nepali traditional techniques. Together, they are owners of Indigo Sanctuary, a spiritually oriented business.



FRIDAY, FEBRUARY 7
5:30 PM



Please dress in loose clothes or Yoga attire, and bring your yoga props with you: mats, blocks, blankets, etc.

Contact the Temple office with questions, (610) 356-5165.

Dr. Mark Salzer

Presented by The Special Needs & Inclusion Committee
Jewish Disabilities and Inclusion Awareness Month Shabbat

We are excited to welcome Dr. Mark Salzer for a special Shabbat service. Dr. Salzer is a psychologist and Professor of Social and Behavioral Sciences in the College of Public Health at Temple University. He is also the Principal Investigator and Director of the Temple University Collaborative on Community Inclusions of Individuals with Psychiatric Disabilities. Dr. Salzer will be speaking about "Becoming a Welcoming and Embracing Congregation for People with a Mental Illness."



Friday, February 7, 2020
7:30 PM



Temple Sholom Preschool Presents

Trivia Night

SATURDAY, FEBRUARY 8, 2020

Doors open at 7pm, Trivia Begins at 7:30

Location: Temple Sholom Multi-Purpose Room

Tickets (per person):

Advance: \$18 ♦ At the Door: \$20

Adults only, please!

Open to all Temple Sholom congregants!

Build your own teams of 8-10 people or create your team the night of the event!

♦ Trivia ♦ Desserts ♦ Fantastic Raffles ♦ 50/50 ♦

Don't miss out on the fun with Rabbi Peter Rigler as our MC!

Questions? Want to Volunteer? Contact April Else, April.R.Else@gmail.com

BYOB

Bring your
friends!

Our BIGGEST
Fundraiser of
the year!

Save the Date!

**"REPRODUCTIVE HEALTH & RIGHTS:
WHAT YOU NEED TO KNOW NOW AND WHY"**

Sunday, March 1

4 P.M.

**TEMPLE SHOLOM IN BROOMALL
55 CHURCH RD., BROOMALL, PA**

**FEATURING GUEST SPEAKER BECKY MARKOWITZ
OF WRJ ATLANTIC DISTRICT**

Presented by the Women of Reform Judaism Atlantic District
in collaboration with the Sisterhoods and Social Action
committees of Temple Sholom in Broomall, Main Line Reform
Temple and Beth David Reform Congregation.

MORE DETAILS ON OUR IMPACTFUL PANEL AND SCHEDULE COMING SOON!



Advertise in *The Temple Tidings*

Advertising contracts are arranged and paid IN ADVANCE of publication through the Temple Office. Call Elyse at 610-356-5165 or email her at:

tidings@temple-sholom.org

Advertising rates are posted on our website at:

www.temple-sholom.org/media-galleries/newsletters

The Temple Tidings Publication Guidelines

Deadline for the March/April Combined Issue is February 5

The Temple Tidings is published bi-monthly. Material submitted for publication may be edited for style, length and content. Anonymous submissions will not be printed.

Please make submissions by EMAIL if possible. A confirmation message will be sent on receipt of your e-mail or send submissions to the Temple TYPEWRITTEN or CLEARLY PRINTED. Questions?

tidings@temple-sholom.org

TEMPLE SHOLOM STAFF AND BOARD

Professional Staff

Rabbi Peter C. Rigler
Cantor Jamie Marx
Rabbi Emeritus Mayer Selekman
Cantor Emerita Patrice Kaplan
Abbey Krain, Executive Director
Lori Green, Education Director
Lori-An Penchansky, Early Childhood Ed. Dir.
Marissa Kimmel, Communications Assoc.
Nertilla Kobiechi, School Admin. Assist.
Open, *Rimon* Admin. Assist.

Temple Sholom Board of Trustees

(two year term 2018-2020)

Melissa Fein, Susan Friedman, Beverly Granoff,
Nancy Hays, Eric Lieberman

(two year term 2019-2021)

Evalyn Elias, Evan Gold, Donna Hendel, Henry Jaffe, Ira Kedson, Lisa Potiger, Blake Robinson

BIMAH BASKETS



Festive baskets are available to decorate the Bimah and benefit Temple Sholom's Religious School and the Life Center for Eastern Delaware County.

Two Bimah baskets are \$150 (\$75 each) and a smaller Oneg Basket is available for the Oneg Table for \$45. Interested in ordering the baskets?

Please contact Susan Farber at

srgf239@gmail.com

The Temple Tidings



**Temple Sholom
in Broomall
55 North Church Lane
Broomall, PA 19008**

610-356-5165 Phone

610-356-6713 Fax

610-886-2065 Education Office

www.temple-sholom.org

tidings@temple-sholom.org

Temple Sholom Executive Board (2018-2020)

Laurie Browngoehl, President
Margaret Husick, Executive VP
Shannon Farmer, VP at Large
Robin Bender Stevens, VP at Large
Marc Alberio, Treasurer (2019-2021)
VP at Large (2019-2021)
Michael Galvin
Steve Granoff
Jim Meyer, Recording Secretary
Emily Mendell, Financial Secretary (2019)
Mary Ann Gould, Immediate Past President

Auxiliary Representatives

Dave Mendell, Brotherhood
Cindy Meyer, Hilltoppers
Barbara Barr, Sisterhood
Sydney Zilch, ToaSTY President
Marissa Kimmel, Youth Group Director
Jr. Youth Group Director-Open

HERE IS HOW TO FIND OUR LIVE WEBCAST

Go to our website:
www.temple-sholom.org
Click on **"Live Webcast"**
It's on the home page.
It's that simple!
**Not all services will be webcast.*

MITZVAH CORE CARES!

Please let us know if you are aware of someone:

- ★ Entering the hospital
- ★ With a new baby
- ★ Death in the family
- ★ Shut-in
- ★ Other



We want to help! Working together we are truly a caring community.

PLEASE CALL THE TEMPLE OFFICE
AT 610-356-5165

ONGOING AND LOBBY COLLECTIONS

Toiletries are needed for the Life Center of Delaware County - bring to the Temple Office.

Canned Goods are always needed to help with empty pantries - a donation box is located in the coat-room closet.

We continue to collect pots/pans/kitchenware items, glasses, dishes, gift cards & comforters for the Nationalities Service Center. This organization provides comprehensive services to refugees and immigrants from around the world.
<https://nscphila.org/stories>.

NOTE: We have two knitters (yeah) so it's time to start collecting wool again. Please leave your wool in the Temple office and Amy Berkowitz will make sure it gets into the capable knitters hands.

Thanks to all who have donated wool over the years. Your generous contributions have warmed many people.

TEMPLE FUNDS

Cantor's Discretionary Fund

Contributions to this fund will be used at the discretion of our Cantor.

Capital Improvements Fund

This fund supports major improvements to our facility above and beyond routine maintenance.

Danowitz Junior Youth Fund

Excellence in Early Childhood Education Fund

To support the programs of the Etta Natalie Rosenblatt Preschool.

Financial Assistance

To offset the reduction of revenue incurred when a Temple Sholom family cannot afford to pay their total dues. Contributions go directly into the General Fund.

General Fund

To support Temple operations.

Hospice and Healing Fund

To assist the Hospice Committee in carrying out its support programs.

Howard Weiner Library Fund

An endowment fund in which the interest is used to purchase books and supplies for the library.

Inclusion and Special Needs Fund

To purchase services, supplies, and equipment to assist congregants, students, and guests in need of accommodations that enable them to participate fully in all aspects of congregation life.

Jubilee Endowment Fund

To secure the future of Temple Sholom.

Marlene B. Kleinman Campership Fund

Interest is used to send students to a URJ camp each year.

Mayer Selekman Jewish Leadership Fund

To provide grants for graduate study toward becoming a Jewish professional.

Rabbi's Discretionary Fund

Contributions to this fund will be used at the discretion of our Rabbi.

Religious School Education Fund

To support programs, special events and materials for education at all levels.

Contributions can be earmarked for Women's Spirituality Group studies at the donor's discretion.

Cantor Patrice Kaplan Chair for Sacred Music Endowment

To endow the cantorial position at Temple Sholom, ensuring the future of Jewish music in our congregation.

Sanctuary Book Fund

To defray the cost of purchasing books for our sanctuary. A book plate is placed in each book indicating the donor's name and the occasion, for a minimum donation of \$36.

Scholar-In-Residence Fund

To help bring scholars to present and engage with the Temple Community, since 1983.

Technology Fund

To maintain and improve all aspects of technology, including our new Webcast used by Temple Sholom.

Temple Beautiful Fund

To improve and maintain the aesthetics of the Temple, including decor, furnishings, grounds and gardens.

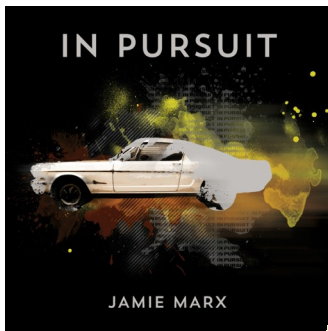
Tzedakah (Food) Fund

To feed the hungry in our community. Contributions are distributed at the close of each fiscal year to outside charities at the discretion of a special Tzedakah committee.

Youth Scholarship Fund

To send Temple Sholom Youth Group members to National Federation of Temple Youth (NFTY) sponsored events. Scholarships are awarded based on financial need.

Contributions also may be made directly to the **Temple Sholom Brotherhood, Sisterhood, Hilltoppers or Women's Spirituality.**



For more info:
www.jamiemarxmusic.com

Restless Heart is available
NOW on iTunes, Spotify, and
 Amazon.

FREE WIFI CONNECTION!

Temple Sholom proudly offers
 fast,
 free wifi throughout the building
 and the annex.

One network name.
 One password.
 Network: **Temple-Sholom-
Guest**
 Password: **Sholom**

TEMPLE SHOLOM DIRECTORY

The directory contains
 confidential information provided
 for the convenience and exclusive
 use of Temple Sholom
 congregants and their families for
 Temple Sholom related purposes
 only. Other uses including
 business and political uses are
 strictly prohibited.

CONTRIBUTION FORM

I wish to make a donation to the _____ Fund in the amount of \$ _____

The contribution is in (check one): _____ memory _____ honor _____ appreciation of: _____

The card should read: _____

This gift of tzedakah is from: _____

Address: _____

Area/Phone: _____

Please send this form with your check made payable to:
 TEMPLE SHOLOM, 55 North Church Lane, Broomall, PA 19008

TZEDAKAH

Or L'Atid Annual Giving Fund

Sharon Cooperman
Maximillian Rothblatt
In honor of Nathan Rigler's Bar Mitzvah

Cantor's Discretionary Fund

Robert & Jennifer Armstrong
In memory of Lisa Tredwell
Julie Leavitt
In honor of Cantor Jamie Marx on the occasion of Nathan Uhl's Bar Mitzvah

Darrin & Deborah Uhl
In memory of Belle Sacks
Adele Persky

In memory of Rose Itzko
Mitchell & Trudy Itzko

Cantor Patrice Kaplan Chair for

Sacred Music Endowment Fund
In honor of Nathan Rigler's Bar Mitzvah

David & Barbara Smilk
In memory of Ethel Schoenfeld
David & Missy Lowdermilk
In memory of David Berkowitz
Sheldon & Penny Bernick
David & Missy Lowdermilk
In memory of Thelma Gabbard
Andrew & Elizabeth
Shanefield

In memory of Martin Metoxen
Yvonne Brockman

Capital Improvement Fund

In memory of Mary Steinbach
Brook Levin

In memory of Samuel Weiss
Kenneth Weiss

Excellence In Early Childhood Education Fund (Preschool)

In honor of Nathan Rigler's Bar Mitzvah

Michele Cooperstein
In memory of Magdalen Duffy
David & Kathleen Porter

Financial Review

Michael & Judith Bolotsky
In memory of David Berkowitz
Amy Berkowitz
Robert & Marian Slater

General Fund

In honor of Nathan Rigler's Bar Mitzvah

Karen Willcox
Jeff & Patty Kaplan

Esther Sobel
In memory of Frances Marie Sharf

In memory of Natalie Silverman
Norma Munin

In memory of Lottie Morley
Matthew & Erica Ezold

In memory of Sidney Brittner
In memory of Max Mittman

Eric & Andi Lieberman

In memory of Bernice Levin
Kenneth & Christine Levin
In memory of David Berkowitz
Howard & Sara Alexander

High Holy Days

In appreciation of Rabbi Peter Rigler

Richard & Bonnie Kaplan

Hilltoppers Fund

In honor of Nathan Rigler's Bar Mitzvah

Hilltoppers of Temple Sholom
In memory of Hyman Levine
Honore Poch

In memory of Bertram Solomon
Jay & Karen Scheikowitz

In honor of Cindy Meyer's birthday

Susan Farber

Hospice and Healing Fund

In memory of Louis Sommers
Roger & Sharon Opstbaum

In memory of Leonard Jacobs
In memory of Frances Solomon

Barry & Carol Jacobs
In memory of David Berkowitz
David & Barbara Smilk

Howard Weiner Library Fund

In honor of Nathan Rigler's Bar Mitzvah

Jim & Cindy Meyer

In memory of Ann Barron

Daniel & Linda Litwin

In memory of David Perelman
Ian & Caryn Gourley

Inclusion & Special Needs Fund

Michael & Judith Bolotsky
In memory of Goldie Goldberg
Fastman

Daniel & Beverly Joie

Rabbi's Discretionary Fund

Joseph & Rita Scheller

Ken & Susan Mendel

In honor of Rabbi Peter Rigler on the occasion of Nathan Uhl's Bar Mitzvah

Darrin & Deborah Uhl
In honor of Rabbi Peter Rigler

Harry & Arlana Gottlieb
In honor of Nathan Rigler's Bar Mitzvah

Neil & Judy Schwartz

John & Susan Farber
Edwin & Annilee Seitchick

Shelley Rappaport

Paul & Susan Friedman
Elaine Smith

Jay & Nancy Handwerker

In memory of Nina Joie

Dan & Beverly Joie

In memory of Ann E. Hersh

William & Jessica Charmont

In memory of Stanley Sherin

In memory of Sophie Jerome

In memory of Selma Nussbaum
Bonnie Sherin

In memory of Jerome Ely Rattner
Kenneth & Susan Mendel
In memory of Dr. Edwin J. Powell

Julie Leavitt

In memory of David Shackman
Kenneth Shackman

In memory of Irvin Nelson

Michael & Julie Samuels

In memory of Sarah C. Wilson
Carl & Susan Miller

In memory of Robert Rosenblum
Jeffrey & Lon Rosenblum

In memory of Harold Litt
Barbara Litt

In memory of Matilda Yarmel

Jeffrey & Margaret Yarmel

In memory of Ethel Stein

Mitchell & Trudy Itzko

In memory of Albert K. & Lottie Besterman

Allen & Ardeth Pinsk

In memory of Dora Sherin

In memory of Jerry Sherin

In memory of Steve Sherin

Maury & Penny Reiter

In memory of John Fisher

Fred Kelner & Ellen Covner

In memory of Leanore Nathans
Leza Raffel

In memory of David Berkowitz

Warren & Arline Lieberman

Jeff & Patty Kaplan

In memory of Leon Schmidt

Ira & Susan Disman

In memory of Irving Shanefield

Andrew & Elizabeth
Shanefield

In memory of Norman Rubin
Carol Rubin

In memory of Jill McClenaghan

Philip & Lisa Rosenfeldt

In memory of Stanley Brockman

Yvonne Brockman

In memory of Jean Fine

H. Jeffrey & Judy Newman

In memory of Irving Robinovitz

In memory of St. George Hunt

Susan Robinovitz

Religious School Education Fund

In memory of Marcus Eisner

In memory of Herb "Pat"

Rosenblatt

In memory of Lee Schultz

Harriet Schultz-Rosenblatt

In memory of Hilda Barth

Sanford & Sandy Barth

In memory of Dora Laster

Howard & Ilene Brouda

In memory of Judith Apple

Dan & Pam Haas

Sanctuary Book Fund

In memory of Sara Bleiman

Jeffrey & Harriet Bleiman

Scholar-in-Residence Fund

In memory of Sylvia Gesoff
Michael & Lisa Pottiger

Selekman Jewish Leadership Fund

In honor of Nathan Rigler's Bar Mitzvah

Carl & Susan Miller

In memory of Harry Schwartz

Neil & Judy Schwartz

In memory of David Berkowitz

Carl & Susan Miller

In memory of Freeda Presser

William Kozin

Temple Beautiful Fund

In memory of Mitchell Wolfson

William & Jessica Charmont

In memory of Janet Mellman

Liz Mellman

In memory of Abe Cohen

Stephen & Ruth Gail Cohen

In memory of Paul Steinbach

Brook Levin

Tzedakah Fund

Michael & Judith Bolotsky

In memory of Barbara Ansel

In memory of Mortimer Berke

In memory of Esther Braverman

Robert & Marjorie Berke

In memory of Phillip Shane

Marlene McPherson

In memory of Lisa Tredwell

Julie Leavitt

In memory of Judy Saltz

Brad & Pam Zilch

In memory of L. Robert Sheffler

Shirley Sheffler

Women's Spirituality Fund

In memory of Sheara Golub

Whalley

Daniel Golub & Kimberly

Wall

In memory of Judy Saltz

Brad & Pam Zilch

In memory of David Berkowitz

Elaine Smith

Youth Scholarship Fund

In memory of Judy Saltz

Brad & Pam Zilch

In memory of Joseph Schneider

Paul & Ellese Schneider

In memory of Rose Rosenberg

Howard & Ruth Rosenberg

YAHREZEITS IN JANUARY ... Z"l

January 1

Irving J. Dorfman
grandfather of Drew Dorfman
Mike Witkowski
friend of Amy Berkowitz
Morris Zaretsky
grandfather of Susan Friedman
January 2
Philip Drucker
grandfather of Adina Stonberg
Saul Levin
father of Larry Levin
Jill McClenaghan
sister of Philip Rosenfeldt
Tomas Rios
father of J. Alberto Rios
Irving Shanefield
father of Andrew Shanefield
Paul Steinbach
uncle of Brook Levin
great-uncle of Emily Mendell
January 3
Flora Dorfman
grandmother of Drew Dorfman
Izzy Dubin
father of Sondra Gutkind
Roslyn Garfinkel
mother of Debra Kirsch
Lorraine Learner
mother of Lisa Leamer-Wagner
Enrique Rios
brother of J. Alberto Rios
Rose Rosenberg
mother of Howard Rosenberg
Norman Rubin
husband of Carol Rubin
uncle of Carol Jacobs
January 4
Marian W. Cantor
mother of Eric Cantor
Sadie Horwitz
mother of Ellen Shapiro
Sol Kedson
father of Leonard Kedson
Oscar Reiner
grandfather of Steven Querido
Theresa Schiaffino
aunt of Dan Joie
January 5
Elma Baxt
mother of Betty Hirsch
Bernice Feldman
aunt of Laurie Albert
Rose Ostroff Lickman
mother of Sharon Kremens
January 6
Jack O. Samans
grandfather of Deborah Samans
Grace Seltzer
mother of Harriet Bleiman
Steven Sherin
cousin of Bonnie S. Sherin
cousin of Penny Reiter
Esther Young
step-mother of Sara Shapiro

January 7

Sally Kellman
mother of Carol Rubin
Feyga Litvina
grandmother of Gene Isayev
David Morgenstern
father of Myra Rios
Harold Schwartz
uncle of Annilee Seitchick
William Skirboll
father of Pam Haas
Eric Solomon
friend of Carol Herman
Julian Trachtenberg
January 8
Betty Bronstein
mother-in-law of Nina Bronstein
Edith Emstein
mother of Rebecca Parmet
Anna Fishkin
grandmother of Deborah Uhl
Herman Kresch
father-in-law of Gloria Kresch
Bertoldo Nathusius
great-uncle of Vera Neumann-Sachs
Morey Rosenbloom
husband of Marsha Rosenbloom
Thomas Stone
grandfather of Mollie Plotkin
Abraham Waxman
father of Richard Waxman
January 9
Harry Blaufeld
father of Andrea Stern
Joseph Edward Broscoe
father of Joseph Broscoe
Karol Danowitz
mother of Michael Danowitz
Donald Glowe
father of Karen Willcox
Albert Goldblum
father of Diane Graff
Mitzi Golub
grandmother of Melissa Shusterman
Edward Hendel
father of Steven Hendel
Frances Kaspin
mother of Barbara Goldstein
Evelynn Peters
grandmother of Deena Peters
January 10
Thomas Broscoe
brother of Joseph Broscoe
Carole Hildebrand
friend of Harriet Bleiman
Jerry Sherin
uncle of Bonnie S. Sherin
uncle of Penny Reiter
January 12
Martin Cohen
Dorothy Dunn
grandmother of Samantha Getz

Betty Friedman

aunt of Barbara Clarke
Isidore Goss
father of Cynthia Fastman
Phillip Veloric
January 13
Mary Blackman
aunt of Lorraine Bailie
Herman Goldman
father of Charles Goldman
Mabel Levin
grandmother of Emily Mendell
Janet Stern
mother of Barbara Clarke
January 14
Maxwell Frank
Jordan Hersh
father of Eileen Wolfson
grandfather of Rachel Thomas
grandfather of Jessica Charmont
Walter Isle
father of Timothy Isle
Lillian Kirsch
mother of Alan Kirsch
Adele Parmet
mother of Daniel Parmet
January 15
Vicki Lee (Rogovin) Lansky
sister of Phoebe Resnick
Theodore Finder
grandfather of Roni Robinson
Harry Goldman
father of Leslie Pumphrey
Eleanor Irvine
aunt of Daniel Endy
Betty Reiner
grandmother of Steven Querido
Sally Cohen Shane
mother of Marlene McPherson
January 16
Annette Barnett
mother of Stephen Barnett
Martin Frankel
brother-in-law of Jerome Goldstein
Henry Morley
grandfather of Erica Ezold
Berta Rios
mother of J. Alberto Rios
Morton Schwartz
January 17
David H. Lynn
father of Thomas Lynn
June Mendel
mother of Kenneth Mendel
Emanuel Robbins
January 18
Stuart Grant
Dr. Norman Learner
father of Lisa Leamer-Wagner
Samuel Trachtenberg
grandfather of Myra Rios
January 19
Dorothy Biedeman

grandmother of Susan Miller

Pearl Brouda
mother of Howard Brouda
Alvin M. Engleman
father of Jayne Wessels
January 20
Eileen Berger
mother of Merraine Rein
Bea Goldstein
cousin of Ira Kenneth Lester
Fannie Grant
grandmother of David & Barbara Smilk
William Munin
father-in-law of Norma Munin
Abe Rogat
grandfather of Jodie Gold
Ben Silberman
grandfather of Matthew Silberman
January 21
Jim Berger
Abe Faske
Miriam Finkelstein
mother of Samuel Finkelstein
Bernard Frank
brother-in-law of Shirley Plotkin
Rose Indig
Loretta Smilk Spitz
mother of David Smilk
January 22
Mae Glick
R. John Gould
Mollie Gutkind
mother of Michael Gutkind
Max W. Pottiger
father of Michael Pottiger
Esther Roth
grandmother of Matthew Frankel
January 23
Lillie Frank
Emanuel Hymowitz
Herbert Kaspin
uncle of Barbara Goldstein
Jack Rein
father of John Rein
Shirley Rubin
mother of Scott Rubin
Florence Zbar
mother of Deane Lappin
January 24
Eva Elfman
grandmother of Linda Hershman
Ruth Litt
mother-in-law of Barbara Litt
Lester Silverman
cousin of Ira Kenneth Lester

January 26

Samuel Chazen
father-in-law of Laura Chazen
Rita Haas
sister-in-law of Dan Haas
Beverly Mellman
January 27
Herbert Ferdman
Anne Kedson
mother of Leonard Kedson
Dr. Alexander Leavitt
father-in-law of Julie Leavitt
Sarah Pulda
mother of Ruth Gail Cohen
Albert Spritzler
uncle of Eileen Buckwalter
Allan Weiss
friend of Martin & Shirley Birenbaum
January 28
Herman Brontz
uncle of Natalene Kramer
Henry Miller
brother of Carolyn Clein
Tom Sherak
uncle of Scott Kalish
Rande Stottlemeyer
uncle of Erin Gold
January 29
Joan Broscoe
mother of Joseph Broscoe
Henry Freed
father of Patrice Kaplan
Jeanne Goldberg
mother of Andrew Goldberg
Edward Kresch
husband of Gloria Kresch
Thomas McAlinden
father of Yvonne Arch
Bella Mescon
January 30
Martin Gottlieb
Norman Kasendorf
grandfather of Eric Rubin
Jack Pine
Sylvia Solomon
mother of Carol Jacobs
sister-in-law of Carol Rubin
January 31
Ida Kaplan Bluestone
mother of Nancy Handwerger
Anne Granite
aunt of Trudy Itzko
Mollie Victor
grandmother of Sharon Goldman

**Please support Temple Sholom by
donating to our various Funds.**

**See page 34 for list of funds and page 35
for the Contribution form**

YAHREZEITS IN FEBRUARY ... Z"L

February 1
Rose Drucker
aunt of Amy Berkowitz
Isadore Kramer
uncle of Mark Kramer
Bea Miller
mother of Carl Miller
Dora Morgenstern
grandmother of Myra Rios
Ida Segal
mother-in-law of Jon Arnon
February 2
Milton Goldberg
grandfather of Valeri Riesenfeld
John Ingram
father of David Ingram
Jean Much
mother-in-law of Elaine Smith
Herman W. Smith
father-in-law of Elaine Smith
February 3
Grace O. Davis
grandmother of Thomas Lynn
Eugene Fine
father of Judy Newman
Joan Leopold
wife of Sandy Leopold
Myra Levy
sister-in-law of Shirley Plotkin
Ben Sassler
father of Norman Sassler
Barry Vitow
husband of Nina Vitow
Richard Weinberg
husband of Eleanor Weinberg
February 4
Gertrude Kelner
mother of Frederick Kelner
David Leavitt
husband of Julie Leavitt
Harry Milkis
Martha Psigoda
aunt of Natalene Kramer
Sarah Bell Rogat
grandmother of Jodie Gold
Abe Rosenblum
grandfather of Alan Gold
February 5
William W. Clear
friend of Nancy Hays
Eva Elias
aunt of Eileen Wolfson
Muriel Komsan
mother of Regina Levin
Cecelia Manashil
Peri Miller
great-niece of Carolyn Clein
Bernard Prusack
father of Rosanne Perry
Edward Rose
Lois Ruth
friend of Richard & Lisa Learner-
Wagner
Myer Sherak
grandfather of Scott Kalish
February 6
Betty Danowitz
aunt of Michael Danowitz

Bernice Levin
mother of Kenneth Levin
Harvey Slater
brother of Robert Slater
February 7
Samuel Barth
father of Sanford Barth
Phillip Feinberg
grandfather of Daniel Feinberg
Bernardo Neumann
father of Vera Neumann-Sachs
Ruth Seid
mother of Jay Seid
Pauline Shapiro
mother-in-law of Sara Shapiro
February 8
Mark Frank
friend of Linda Herschman
Rose Hoffman
Henry Rosenfelt
husband of Pam Haas
Barbara I. Scolnick
grandmother of Daniel Scolnick
Jacquie Stiefel
mother of Eileen Buckwalter
February 9
Edward Burstein
father of Laurie Burstein-Maxwell
Anita Ender
mother of Robin Weinstein
Ruth Harris
mother of Joan Rosenfeld
Gustavo Heinemann
uncle of Vera Neumann-Sachs
Elizabeth Schiller
grandmother of Stacy Rigler
Fannie Shereshevsky
aunt of Adele Persky
Mary Weinberg
February 10
Mary Brecher
Emma Greenberg
grandmother of Barbara Barr
Samuel Myers
February 11
Maurice Fienman
Reba Kolsky
Rose Ann Rose
February 12
Frances Berlin
mother-in-law of Barbara Berlin
Morton Fastman
father-in-law of Cynthia Fastman
Ruth Justan
mother of Sandra Barth
Mary Ann Litwin
mother of Daniel Litwin
Meyer Psigoda
uncle of Natalene Kramer
Isadore Rosenblith
father of Shirley Sheffler
Beverly Slater
sister-in-law of Robert & Marian
Slater
Dr. Howard Smith
husband of Elaine Smith
Richard Swart

February 13
Chan Baillie
husband of Loraine Baillie
Ida L. Greene
Janet Davis Lynn
mother of Thomas Lynn
Norma G. Steinberg
mother of Linda Cantor
February 14
Hannah Friedman
aunt of Carol Rubin
Leonard Harris
father of Joan Rosenfeld
Eric Heinemann
grandfather of Vera Neumann-Sachs
Rudy Lidsky
grandfather of Robin Weinstein
Caroline Pliskin
grandmother of Mindy Haenn
Steven Schoenstadt
husband of Bobbi Schoenstadt
Marsha Schwartz
aunt of Robin Weinstein
Franklyn Steinberg
father of Linda Cantor
Esther Usset
Ruth Wolfson
aunt of Eileen Wolfson
February 15
Esther Abrams
grandmother of Erica Ezold
Gloria Choukroun
cousin of Amy Berkowitz
Myndi Rosenfeldt Christie
cousin of Michele Cooperstein
Milton Hershhorn
grandfather of Samantha Smith
Mildred Kaufman
mother of Richard Kaufman
Ada Kresch
mother-in-law of Gloria Kresch
Patricia Kresch Fisher
niece of Dan & Pam Haas
Nancy Roomberg
sister of Charles Goldman
Hilda Savar
February 15
Earl Schneider
step-father of Beth Cope
February 16
David Dipertein
brother of Barbara Polsky
uncle of Candice Polsky
February 16
William Greenstein
Nathan Kaspin
grandfather of Barbara Goldstein
Leonid Kogan
brother of Irene Gorelik
Deborah Platt
mother of Carryl Platt
February 17
Denise Abelson
mother of Samantha Abelson
Alice Berkowitz
Judith Cohen
Blanche Graff
mother of Harold Graff


Michael Haas
father of Dan Haas
Louis Kolsky
February 17
Thomas Palisano
father of Margaret Yarmel
Jeffrey B. Schwartz
Netta S. Waldbaum
Jean Weinstein
grandmother of Robin Weinstein
February 18
Theodore E. Aronow
brother of Pearl Klausner
Milton Cooper
father of Glenn Cooper
Geraldine Phillips
mother of Linda Phillips
Abraham Rose
uncle of Norman Sassler
February 19
Rose Fishelman
mother of Barbara Litt
David Goldsmith
Reba Rosen
Adolph Rosenberg
father of Howard Rosenberg
Teddy Sherin
grandfather-in-law of Bonnie S. Sherin
Marcus Silverman
grandfather of Amy Berkowitz
February 20
Allan Cherksey
Benjamin Finkelstein
uncle of Deane Lappin
Herman Shooster
uncle of Donna Shooster
February 21
Annie Fine
aunt of Mayer Selekmann
Erwin Friedman
cousin of Barbara Clarke
Arnold Kalin
grandfather of Amanda Neill
Eli Matusow
father of Arthur Matusow
Benjamin Stewart (Dr)
Louis Winitsky
father of Stella Maser
February 22
Ford Bayuk
uncle of Myra Rios
February 23
Joe Daly
friend of Joseph Broscoe
Yetta Mark
grandmother of Jerald Mark
Howard Rosenbloom
father-in-law of Marsha Rosenbloom
Joseph Sacks
father of Adele Persky
Adam Phillip Wachtel
nephew of Gene & Jennifer Isayev
February 24
Tom Baum
Eugene Gordon
father of Deborah Gordon

Lester Miller
father of Carolyn Clein
Jean Munin
mother-in-law of Norma Munin
Leon Poch
father-in-law of Honore Poch
Esther Reiter
Teddy Sherin
grandfather of Penny Reiter
Walter Wildman
February 25
Edward Berman
Joseph Chanin
grandfather of Jennifer Morgan
Sadye Goldman
mother of Leslie Pumphrey
Irvin Hoffman
Moise Marcovici
father-in-law of Mia Marcovici
Peter N. Marcus
father of Barbara Barr
February 26
Harry Bernhang
Esther Gold Clein
mother of Warren Clein
Rita Essreg
Shirley Kresch
sister of Pam Haas
Leon Rosenfeldt
father of Philip Rosenfeldt
Sidney Rowling
father of Michael Rowling
Anne Shackman
mother of Kenneth Shackman
February 27
Arlene Ames
aunt of Rachel Ebby-Rosin
Louis Eisner
uncle of Harriet Schultz-Rosenblatt
Emily Fuhrman
grandmother of Barbara Mark
Irving Hyman
father of Becky Krangel
Mary Grace Kiesel
mother of Judith Bolotsky
George Persky
father-in-law of Adele Persky
Ella Varshavsky
grandmother of Dorilona Rose
February 28
Mary Coplan
Sadie Lieberman
mother of Warren Lieberman
Rosella Linder
aunt of Pam Haas
February 29
Sheldon Bernheim
father of Lori Rowling
Mildred Joseph
aunt of Nancy Hays
Milton Parmet
father of Daniel Parmet

January 2020 Tevet/Shevat 5780

Sun	Mon	Tue	Wed	Thu	Fri	Sat
<p><i>Shushan Rhapsody Purim Spiel</i> 3/9/20</p>		<p>An Evening with Rabbi Joseph Telushkin 3/22/20</p>	<p>4 Tevet Building Closed - New Year's Day</p>	<p>5 Tevet Preschool Returns! 10:30 AM Hilltoppers Board Meeting</p>	<p>6 Tevet 7:30 PM Shabbat Service</p>	<p>7 Tevet</p> <p>Torah Portion: <i>Vayigash</i></p>
<p>8 Tevet 9:30 AM <i>Rimon</i> 9:30 AM <i>Gesherim</i> Kids 9:30 AM Conversations with Men</p>	<p>9 Tevet 5:30 PM <i>Rimon</i> Hebrew 7 PM <i>Rimon</i> Noar 7 PM Justice & Leadership Fellowship</p>	<p>10 Tevet 4 PM <i>Rimon</i> Hebrew 5:30 PM B'nei Mitzvah Class 7:30 PM Choir Rehearsal</p>	<p>11 Tevet 10:30 AM Tanakh Class 4 PM B'nei Mitzvah Class</p>	<p>12 Tevet 1:30 PM Hilltoppers Book Club 7:30 PM Sisterhood Book Club</p>	<p>13 Tevet 5:30 PM Camp Shabbat 6:15 PM Potluck Dinner 7 PM Family Shabbat Service - <i>Gimel</i> Shabbat</p>	<p>14 Tevet 10:30 AM Bat Mitzvah: Alexandra Young</p> <p>Torah portion: <i>Vay'chi</i></p>
<p>15 Tevet 9:30 AM <i>Rimon</i> 9:30 AM <i>Gesherim</i> Families</p>	<p>16 Tevet 5:30 PM <i>Rimon</i> Hebrew 7 PM <i>Rimon</i> Noar 7 PM Justice & Leadership Fellowship</p>	<p>17 Tevet 4 PM <i>Rimon</i> Hebrew 5:30 PM B'nei Mitzvah Class 7:30 PM Choir Rehearsal</p>	<p>18 Tevet 10:30 AM Tanakh Class 4 PM B'nei Mitzvah Class 7 PM Executive Board Meeting 7:30 PM General Board Meeting</p>	<p>19 Tevet 2 PM Hilltoppers Event: Movie Matinee</p>	<p>20 Tevet 7:30 PM Shabbat Service</p>	<p>21 Tevet 10:30 AM Bat Mitzvah: Lillian Gold 7 PM An Evening with Myla Goldberg</p> <p>Torah Portion: <i>Sh'mot</i></p>
<p>22 Tevet No <i>Rimon</i> - MLK Weekend</p>	<p>23 Tevet <i>Building Closed</i> No <i>Rimon</i> - MLK Weekend</p>	<p>24 Tevet No <i>Rimon</i> - MLK Weekend 5:30 PM B'nei Mitzvah Class 7:30 PM Choir Rehearsal</p>	<p>25 Tevet 4 PM B'nei Mitzvah Class 7:30 PM Women's Spirituality</p>	<p>26 Tevet</p>	<p>27 Tevet 7:30 PM Shabbat Service</p>	<p>28 Tevet 10:30 AM Bar Mitzvah: Justin Haenn</p> <p>Torah Portion: <i>Va-etcha</i></p>
<p>29 Tevet Trip to Cuba Begins! 9:30 AM <i>Rimon</i> 1 PM Purim Spiel Auditions</p>	<p>1 Shevat 5:30 PM <i>Rimon</i> Hebrew 7 PM <i>Rimon</i> Noar 7 PM Justice & Leadership Fellowship</p>	<p>2 Shevat 4 PM <i>Rimon</i> Hebrew 5:30 PM B'nei Mitzvah Class 7:30 PM Choir Rehearsal</p>	<p>3 Shevat 4 PM B'nei Mitzvah Class</p>	<p>4 Shevat</p>	<p>5 Shevat 7:30 PM Rock Shabbat Service</p>	<p>31</p>

February 2020 Shevat/Adar 5780

Sun	Mon	Tue	Wed	Thu	Fri	Sat
<p><i>Second Night Seder</i> 4/9/20</p> <p>7 Shevat</p> <p>9:30 AM <i>Rimon</i> 9:30 AM <i>Gesherim</i> Families 9:30 AM Conversations with Men 1 PM Purim Spiel Rehearsal Time TBD Culture Club Superbowl Party</p>	<p>8 Shevat</p> <p>5:30 PM <i>Rimon</i> Hebrew 7 PM <i>Rimon</i> Noar 7 PM Justice & Leadership Fellowship</p>	<p>9 Shevat</p> <p>4 PM <i>Rimon</i> Hebrew 5:30 PM B'nei Mitzvah Class 7:30 PM Choir Rehearsal</p>	<p>Scholar in Residence Weekend 4/17/20 - 4/19/20</p> <p>10 Shevat</p> <p>10:30 AM Tanakh Class 4 PM B'nei Mitzvah Class</p>	<p>11 Shevat</p> <p>10:30 AM Hilltoppers Board Meeting</p>	<p>12 Shevat</p> <p>5:30 PM PreShabbat Yoga 7:30 PM Shabbat Services - Jewish Disabilities & Inclusion Awareness Month</p>	<p>6 Shevat</p> <p>Torah Portion: Bo</p>
<p>14 Shevat</p> <p>9:30 AM <i>Rimon</i> 9:30 AM <i>Gesherim</i> Kids 1 PM Purim Spiel Rehearsal</p>	<p>15 Shevat</p> <p>5:30 PM <i>Rimon</i> Hebrew 7 PM <i>Rimon</i> Noar</p>	<p>16 Shevat</p> <p>4 PM <i>Rimon</i> Hebrew 5:30 PM B'nei Mitzvah Class 7:30 PM Choir Rehearsal</p>	<p>17 Shevat</p> <p>10:30 AM Tanakh Class 4 PM B'nei Mitzvah Class</p>	<p>18 Shevat</p> <p>Teen Civil Rights Trip Until 2/17 1:30 PM Hilltoppers Book Club</p>	<p>19 Shevat</p> <p>5:45 PM Tot Shabbat 6:15 PM Potluck Dinner 7:00 PM Family Shabbat Service</p>	<p>20 Shevat</p> <p>Torah Portion: Yitro</p>
<p>21 Shevat</p> <p>No Rimon - President's Weekend</p> 	<p>22 Shevat</p> <p>No Rimon - President's Weekend</p>	<p>23 Shevat</p> <p>No <i>Rimon</i> - President's Weekend 5:30 PM B'nei Mitzvah Class 7:30 PM Choir Rehearsal</p>	<p>24 Shevat</p> <p>10:30 AM Tanakh Class 4 PM B'nei Mitzvah Class 7 PM Executive Board Meeting 7:30 PM General Board Meeting</p>	<p>25 Shevat</p>	<p>26 Shevat</p> <p>7:30 PM Shabbat Service</p>	<p>27 Shevat</p> <p>Torah Portion: Mishpatim</p>
<p>28 Shevat</p> <p>9:30 AM <i>Rimon</i> 1 PM Purim Spiel Rehearsal</p>	<p>29 Shevat</p> <p>5:30 PM <i>Rimon</i> Hebrew 7 PM <i>Rimon</i> Noar 7 PM Justice & Leadership Fellowship</p>	<p>30 Shevat</p> <p>4 PM <i>Rimon</i> Hebrew 5:30 PM B'nei Mitzvah Class 7:30 PM Choir Rehearsal</p>	<p>1 Adar</p> <p>4 PM B'nei Mitzvah Class 7:30 PM Women's Spirituality</p>	<p>2 Adar</p>	<p>3 Adar</p> <p>7:30 PM Shabbat Service</p>	<p>4 Adar</p> <p>10:30 AM Bat Mitzvah: Julia Feldman 6:30 PM <i>Rimon</i> 4th gr. Naming Ceremony</p> <p>Torah Portion: Terumah</p>



LIVE YOUR BEST LIFE

Experience the Barbara Brodsky Suites at Lankenau Medical Center

You value knowledge. You value exceptional medical care. You value privacy.

When you need to be in the hospital, you can find exceptional medical care in an elegant healing environment at Lankenau Medical Center, part of Main Line Health. During your stay in the artfully appointed Barbara Brodsky Suites, you will have a personal concierge to see to your needs, deluxe amenities to make your stay more comfortable, chef-prepared gourmet meals, and private living and dining areas for you and your loved ones. It's these extras that create an incomparable experience.



To see a virtual tour of the Barbara Brodsky Suites, visit mainlinehealth.org/brodsky. To check availability, call 484.476.6180 or email BrodskySuites@mlhs.org.

Celebrating Our Diverse and Inclusive Community



The Temple Tidings

Deadlines

March/April

~ deadline February 5 ~

May/June

~ deadline April 5 ~

July/August

~ deadline June 5 ~

September/October

~ deadline August 5 ~

November/December

~ deadline October 5 ~

January/February

~ deadline December 5 ~



Temple Sholom in Broomall

55 North Church Lane, Broomall, PA 19008

www.temple-sholom.org

610-356-5165 Phone

610-356-6713 Fax

610-886-2065 Preschool

Rabbi Peter C. Rigler

Cantor Jamie Marx

Rabbi Emeritus Mayer Selekman

Cantor Emerita Patrice Kaplan



UNION FOR **MEMBER**
REFORM JUDAISM

האיחוד ליהדות רפורמית

SERVING REFORM CONGREGATIONS IN NORTH AMERICA