



**MAZEL TOV TO THE
CONFIRMATION CLASS OF 2017**



Front row: Abby Kesselman, Sofia Isayev,
Erica Watson
Back row: Ezra Frank, Andrew Danowitz,
Ely Miller-Wilson

**MAZEL TOV TO LORI GREEN ON
EARNING HER EXECUTIVE M.A.
IN JEWISH EDUCATION**



To learn more about her journey, see page 15

**SHABBAT IN THE PARK
FRIDAY, JUNE 2ND AT
MERRY PLACE in Havertown**

See page 22 for details and on how to RSVP
for the delicious BBQ

New Location! Accessible to all!

WHAT'S INSIDE

**ANNUAL CONGREGATIONAL
MEETING
MONDAY, JUNE 19 AT 7:30 P.M.**
See page 24 for more information

**GIVE THE GIFT OF LIFE
BLOOD DRIVE
WEDNESDAY, JUNE 28 2-7 P.M.**
See page 25 for sign up directions

- | | |
|----------------------------|----------------------------|
| 2 Rabbi's Message | 15 A Teacher's Reflections |
| 3 Notes from the Cantor | Congratulations, Lori! |
| 4 Director's Corner | 16 June B'nei Mitzvah |
| From the Board | 17 Maya's Bat Mitzvah |
| Community Coordinator | 18 ToaSTY & Jr. ToaSTY |
| 5 Membership Contributions | DMAX Foundation |
| Make a Difference | 19 Discussion Group |
| 6 Scholar in Residence | Havdalah in the Home |
| Weekend Recap | June Oneg Sponsors |
| 7 Conversations with Men | 20 Happiness & Memorial |
| Inclusion News | Cards |
| 8 Sisterhood News | JNF Trees |
| Lobby Collections | 22 Shabbat in the Park |
| Israel Trips | 23 Jewish Choral Festival |
| 9 Hilltoppers | 24 Annual Meeting |
| 10 Women's Spirituality | 25 Blood Drive |
| Mitzvah Meals | 26 Temple Staff and Board |
| 11 Mazel Tov | 27 Temple Funds |
| 2017-2018 Slate of | 28 Tzedakah |
| Officers | 29 June Yahrzeits |
| 12 Preschool News | Recent Deaths |
| 13 Preschool Enrollment | 30 Contribution Form |
| 14 Around <i>Rimon</i> | 32 Camp Menschy |
| | 33 June Calendar |

FROM THE DESK OF RABBI PETER RIGLER

Summer is right around the corner! A time where we can spend a little more time outside and more time with family and friends. As we enter the summer, I think of a favorite story. There is a young man who gets a few shekels for his birthday and decides to buy a kite. Perhaps you remember that feeling of picking out a new kite. He unfolds the kite and carefully snaps the poles into place and ties the string tight. He finally brings it out to a field and starts running to get it to fly. Any of us that have flown a kite know it is not as easy as it looks on TV! Eventually he does it and it flies into the sky. All afternoon he spends running up and down with the kite aloft above him. At one point in the afternoon, a man in a suit comes by and asks the boy what he is doing. The boy explains that he is flying a kite, but the kite has been un-furled so far, you can't even see it through the clouds. How does he know it is still there, the man asks? The boy answers, "I can feel the tug." Think about how amazing that tug of the kite is as a kid or, I even think as an adult!

That is how I view summer opportunities for Jewish education and connection with our traditions. We want our kids to feel that tug, wherever they are. I serve as a camp rabbi each summer not only because I find that it helps me to energize and refresh my teaching skills, connects me with other clergy and re-energizes me but mostly because I believe in its power. Jewish camps give young people a strong sense of Jewish identity. It allows them to feel that tug. This summer, I will spend 10 days traveling with 22 students, including some of our own, to Costa Rica to connect to the environmental challenges being faced and connect those ideas to Jewish values. I also will serve on faculty at URJ Camp Harlam in the Poconos, my

summer home where I will be with over 25 Temple Sholom students, not to mention so many other Temple Sholom kids and adults who serve on staff. Cantor Marx will serve on faculty at Camp Harlam

Day camp, where we have more than 25 students attending and working this summer. The day camp is the first day camp in our reform movement camp system and it is located right here in Bryn Mawr. These opportunities are priceless for our kids and help to bring positive energy to families and our larger community! We are so grateful for the scholarship dollars Temple Sholom, our Sisterhood and others provide to make this possible for all of our kids!

Summer is a great time for us all to connect with our world and our tradition! What will you do?

~ Rabbi Peter Rigler

rabbi@temple-sholom.org



OH! WHAT A NIGHT!
60 YEARS OF TEMPLE SHOLOM ON BROADWAY
November 5, 2017

Seeking Auction donations!
Vacation Home? Air Miles? Time Share?
Tickets for sporting events, concerts or theater?

Please contact Melissa Fein at 215-837-1393 or mfein10@gmail.com

Mi SHEBEIRACH LIST ***CONTACT US ONLINE!***

Is there someone in your family or in your circle of friends whom you'd like added to our *Mi Shebeirach* list? Your privacy is assured -- we still only print names with permission.

Mi Shebeirach List Online Submission Form is on the Temple Sholom homepage. You can also go to:
<http://www.temple-sholom.org/community/mi-shebeirach-list-submission-form>

NOTES FROM CANTOR JAMIE MARX



“I don’t know any Hebrew.”

“Oh sure I sang in college but I haven’t done it in years.”

“I can’t read music at all.”

“I’m not interested in having solos or anything.”

I’ve heard all of these reasons (and many more!) why a person “can’t” join the choir at Temple Shalom. I frequently reassure the person and point out that the choir is the best place to learn the words to the prayers, that we go through every song note for note, and that there’s no requirement to be front and center when you’re in the choir. But perhaps I’ve taken the wrong tack — maybe I should offer up the reasons that choir members give for why they join:

“I miss having music in my life.”

“It helps me learn the words to the prayers and all the different melodies we do.”

“The choir is like its own community and it’s a wonderful group of people.”

“There’s nothing more spiritually enriching than singing, especially in a choir.”

It can be tough to carve out 90 minutes each week for oneself, all the more so when it’s a spiritually enriching activity. It’s easy to feel guilty that the time

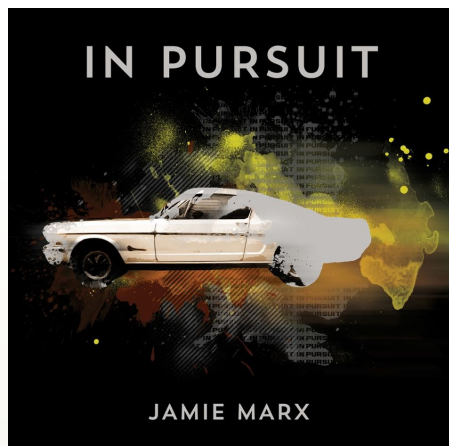
isn’t being spent on one’s partner, or children, or earning money. And during the year there are a million other activities competing for your attention. That’s why a number of our congregants like to join the choir now, as we enter into the summer. Even with vacations and travel, there often feels like a little more flexibility in the schedule during the summer months. And for the choir, this is the time we spend on High Holy Day music, so the time commitment has a definite end date — with an option to continue in the fall if it works out.

There really is no better time to join than in June and early July, as we get our High Holy Day music preparation going. We go through all of the music carefully, even for those who have been singing many of these tunes for years. It’s a way to spiritually and religiously connect during the holy days in a profound way. And it’s hands-down the best opportunity we offer to gain comfort and familiarity with the words of our High Holy Day prayer book.

If you have questions come talk to me any time. And if you don’t believe me, ask any of our choir members why they joined. And then, when you’re just about ready to take the leap, come sit in on a rehearsal and just see how it feels. I bet it’ll surprise you.

~ Cantor Jamie Marx

cantor@temple-sholom.org



COMING IN FALL 2017
A NEW ALBUM FROM CANTOR MARX

IN PURSUIT
JEWISH HARD ROCK

SIGN UP FOR THE MAILING LIST
(WWW.INPURSUITALBUM.COM/LIST) BY JUNE 15
AND GET AN EXCLUSIVE ADVANCE DOWNLOAD OF
"SHALOM RAV" FROM THE ALBUM!

MESSAGE FROM THE BOARD

Why have I remained a member of Temple Sholom for fifty years? In this season of counting the Omer I decided to count my blessings. One of those blessings has been to be part of our wonderful Temple community. Active and involved membership, including serving on many committees, the Board of Trustees, and as an officer over many years has provided me with a great deal of satisfaction. The rewards gained far exceed the service provided. Involvement in the choir and participation in as many activities as possible has provided nourishment for my soul and a group of wonderful friends. When I joined Temple Sholom in 1967, my children were young and just starting religious school. I have seen many changes over the years, both in personnel and in our facility and I am thrilled to be able to say that we are even more vibrant today. I account for this long lasting attachment by my ongoing involvement in a variety of activities. While all of us have busy lives, I encourage you to step up and get involved. If you come, you will be rewarded in ways you cannot imagine.

And so, I count family, friends, health, satisfying career, active retirement, and membership and involvement in many aspects of life at Temple Sholom as blessings in my life. Join us, remain with us, and you too can find lifelong fulfillment here at Temple Sholom.

B'Shalom, *Nancy Bloomfield*
Financial Secretary and Past President

DIRECTOR'S CORNER

Friends,

Your membership dues and fees payments make a difference to our Temple community. They are included in our annual budget, and we depend upon your continued support. The graphs on the next page provide you with a snapshot of our overall budget. The income and expenses for the coming year as well as a broad listing of income and expense categories are depicted.

Membership renewal forms will soon be sent to you. Please know we value your continued support and look forward to receiving your membership commitment for the coming year.

If you have financial challenges, please let me know right away. We have limited scholarship opportunities available, and so it is important to let us know and complete the forms in a timely fashion. We may be able to provide you with assistance from our Financial

BRINGING OUR COMMUNITY TOGETHER

Wow! I cannot believe it is already June! The year has gone by so quickly. As the year begins to wind down, Temple Sholom still has a lot of activity going on before summer mode kicks in. June 2 you won't want to miss the annual Shabbat in the Park filled with a Shabbat nature walk, BBQ, and outdoor service. This year, we have changed locations to Merry Place in Havertown. This park is specifically designed to be accessible for all. We are so glad that this wonderful Shabbat will now be easily accessible for all of our congregants. See page 22 for details.



Monday, June 19 is our Annual Congregational Meeting. All congregants are invited and encouraged to attend and hear a recap of this year and get a glimpse into the next. We will also vote on new board slates. See page 24 for more information.

On Wednesday, June 28 Temple Sholom is hosting an American Red Cross Blood Drive. Finish out the year with a mitzvah! See page 25 for registration information. If you have any questions, please don't hesitate to reach out! Happy Summer!

~ B'shalom, *Marissa Kuperschmidt*
community@temple-sholom.org

Assistance Scholarships, Satell Grant and/or the EITC program, as you may be eligible. All financial considerations are held in confidence.

I look forward to seeing you at our Annual Meeting on Monday, June 19th at 7:30 p.m. Please join us as we celebrate our accomplishments from the past year, and look ahead to a new year together. If you have prospective members you think may consider joining our Temple family, please let me know and I will reach out to them. Let's get the word out about Temple Sholom!



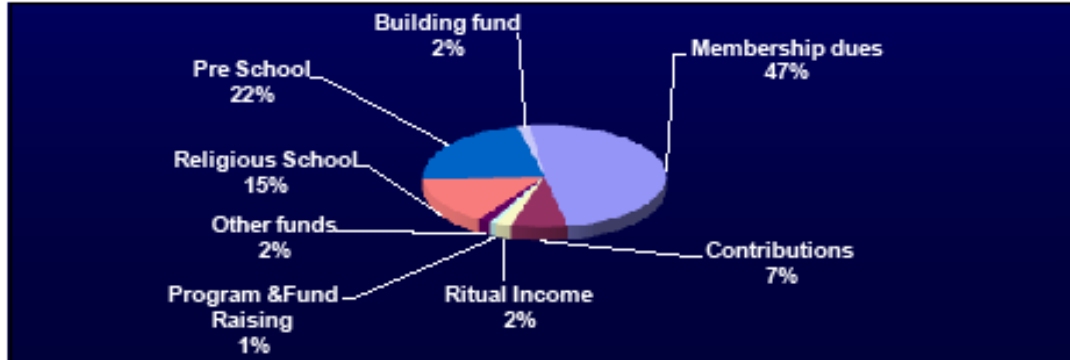
Warmly,

~ *Abbey Krain*
director@temple-sholom.org

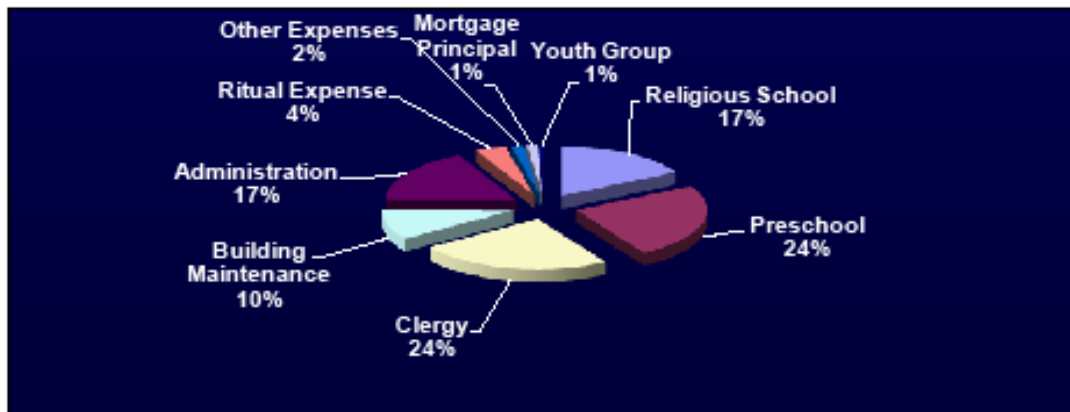
YOUR MEMBERSHIP CONTRIBUTIONS MAKE A DIFFERENCE

We appreciate your membership and want you to know that Temple Shalom counts on your generosity and participation to keep our synagogue strong. Temple Shalom spends approximately \$3,000.00 annually per household including approximately \$850.00 per child for religious school.

2017-18 Income—\$1,414,796



2017-18 Expenses—\$1,371,236



Membership Dues (categories reflect 10 monthly payments. \$50 discount for payment up front)

Family Membership	\$2615.00	Retired couple	\$1390.00
Under 31 couple	\$ 650.00	Retired single	\$ 885.00
Single	\$1595.00	Single Parent	\$1700.00

Please let us know if you have financial considerations. We will provide you with our financial assistance form. An EITC form is also available for those that qualify.

Satell funding may be available for new members to our congregation who qualify, or families that have experienced a loss of income. Please let us know if you would like to receive more information.

To maintain our building and Synagogue grounds all members of our Congregational family are required to contribute to our building fund. The total contribution is \$2,170 payable over 7 years, at a rate of \$310.00 per year. There is no building fund to members in the retired category.

Budget details are available upon request.

SCHOLAR IN RESIDENCE - WHAT A WEEKEND! WHAT A DIAOLOG!

Nobody wanted to leave – not after Shabbat services and the Oneg, not after the Saturday afternoon program, and not after the Sunday brunch. If you were there, you fully understand. If you were not, then I'll try to explain.

With a strong feeling about the necessity of learning more about Islam in today's world, the Scholar in Residence Committee hosted Imam Malik Mubashshir, spiritual leader of the Philadelphia Muslim Community Masjid (located at 48th and Baltimore in Philadelphia). With true Temple Sholom spirit, Imam Mubashshir was greeted with open arms at Shabbat dinner (catered by Pumpernick's Delicatessen – sorry, but a little shameless advertising never hurt). Between bites, he gamely answered questions ranging from the recent upswing in -- for lack of a better word -- puritanical Islam to where to find the best pizza places in Mt. Airy.

Friday night's program provided a teaser for the rest of the weekend – an introduction to Islam for non-Muslim audiences, with an emphasis on the meaning of the five pillars of Islam. In a nutshell, the message was one of peace, unity and inclusion. In fact, we have more in common than not – both the Imam and Rabbi Rigler referred to us as cousins; we may not always get along, but we're family. Saturday's program was a discussion of how Islam developed from the caliphate of the Prophet Mohammed through to modern times and the different interpretations of the Qu'uran, much like the Talmud interprets the Torah.

On Sunday, Imam Mubashshir invited three members of his community to join him for a panel discussion. We were able – and encouraged – to ask the hard questions. We learned what the daily life of an observant Muslim is like, and how they plan their days to allow for prayer – like five brief Shabbats during the course of the day. We learned what drew them to Islam. We learned how they feel about the militant people who are



twisting the words of the Qu'uran to incite murder. Not surprisingly, they feel what we feel: outrage. What we learned most, though, is that while there are differences, there are more similarities and where there was once "other" and "strange" is now understanding.

Both communities hope that we can maintain the momentum.

The SIR Committee has many people to thank: everyone in the office who handled the RSVPs; the custodial staff; the Sisterhood for sponsoring the oneg; the Brotherhood for sponsoring the brunch; the countless Temple members who provided hors d'oeuvres on Saturday; and the countless Temple members who helped chauffeur, set up, clean up and trouble shoot. (Who knew the front door could get stuck OPEN?) Rabbi Rigler and Cantor Marx who set the tone (and the microphone). And mostly my husband, Michael Pottiger, who did simply EVERYTHING, and still found time to take pictures.

SIR Committee members: Andy Borson, Howard Cylinder, Shannon Farmer, Cindy Fastman, Jen Isayev, Alan & Deb Kirsch, Ed and Gloria Kresch,

~ Lisa Pottiger



CONVERSATIONS WITH MEN



On Sunday, May 7th we discussed the intersection of spirituality, mysticism, and Science.

Many people treat spirituality and science as wholly separate domains. Many believe these two areas are irreconcilable and will never meet but this is a closed-minded attitude. A truly scientific perspective would continue to gather evidence and propose theories which can be tested.

Just as we know from experience that love, although extremely subjective and difficult to quantify, is still undeniably real, spiritual experiences persist and continue to grow in number despite all efforts to disprove them.

This was our last conversation of the 2016-2017 season, but don't worry, we have a great new series of conversations planned for next season!

In the 2017-2018 season, we will explore the world of the Talmud and the tradition of Midrash, the exploration of alternative interpretations and deeper meaning that can be found in the many events recorded in the Torah!

See you then!

If you have any ideas, suggestions, or requests for next year's discussion series, please forward them to daniel.endy@gmail.com.

INCLUSION AND SPECIAL NEEDS COMMITTEE NOTES

I have the honor of attending meetings with representatives of Delaware Valley synagogues and other Jewish organizations as a participant in the Jewish Special Needs Consortium of Greater Philadelphia. It is amazing to learn about all the things going on in our community to enrich the lives of people with disabilities, and most importantly, to enrich the Jewish community by enabling people of all abilities to participate in their community.

Temple Sholom is truly a leader in the greater community, and it makes me proud to share our efforts and accomplishments to assure the inclusion of people who have historically been left out. Occasionally, I am able to provide flyers that promote wonderful opportunities, so check out the flyer board opposite the coat closet. There is a terrific flyer about Inclusion at Temple Sholom in the flyer board.

At a recent training seminar, I learned about a synagogue in Washington, D.C., that has developed a successful training tool to help all of us understand the culture change that promotes inclusion. Inclusion means finding ways and providing accommodations to enable people with disabilities to participate in all areas of synagogue life. The goal is for this to become part of the fabric of Jewish life, rather than the ongoing work of a committee. Rather than viewing inclusion as being kind, let's view it as social justice. Rather than limiting inclusion to being the act of helping others, let's view inclusion as the act of strengthening the collective. Rather than offering specific programs targeted at people with disabilities, let's work together to assure that our synagogue and our community are totally accessible.

It is so empowering for people with disabilities to not have to ask for help or make arrangements for accommodations, if they know that the community and its programs have built in accommodations so that any person can fully participate, whatever their abilities. This is why the Inclusion Committee views itself as a means to educate and implement changes that will serve people with challenges, but that we will be out of a job eventually as the culture of Temple Sholom changes to be fully inclusive.

Our community benefits from the full participation of all of our congregants, including those with special needs. Please remember that you can always request an accommodation, and we will do our best to provide this for you, a family member, or guest. Please contact Inclusion and Special Needs Committee Chairperson, Regina Levin, at 610-715-1745 or email: inclusion@temple-sholom.org, or contact the Temple Sholom office if you are in need of assistance.

SISTERHOOD IS RARIN' TO GO FOR NEXT YEAR ... So Join Us!

Sisterhood of Temple Sholom in Broomall is still going strong. After a May planning meeting, we have chair people and committee members who are ready to move forward with plans and programs for next year.

We look forward to sharing all the details!

In this issue, we want to send a special "shout out" to Sisterhood Board member Barbara Barr, who has so ably represented Sisterhood on the Temple Sholom Board of Trustees all year long. She has reported to others all the activities of Sisterhood and brought back to Sisterhood members Temple goings-on that we needed to know. Thank you, Barbara!

Isn't it wonderful that the Sisterhood women are informed and then reminded of all Sisterhood activities? This happens anonymously but here's a little secret: Past Co-President Frances Epstein is the secret force behind all your email reminders. Thanks so much, Fran!

Last month, the Sisterhood Book Club met to discuss its final selection for the year, *A Pigeon and a Boy*, by Meir Shalev. The titles for next year will be announced soon. Members of the Sisterhood Book Club are an enthusiastic group of women who meet five times a year to discuss books of their own choosing. They meet at each other's homes, enjoying refreshments while Laurie Brown goehl facilitates the current title. Sisterhood sends lots of

appreciation to Michele Cooperstein who keeps our readers well organized!

Remember to contact Shirley Birenbaum at surabassa@aol.com or call her at 610-328-2171 for Happiness and Memorial cards (newly designed!) and for Jewish National Fund trees, circles or groves. Our Temple Sholom Sisterhood is able to offer these to you at a discounted, competitive rate.

The **Gift Garden** is open throughout the summer by special appointment. Your gift needs can always be met! And remember, Sisterhood members receive a percentage off the price on items.

Any questions or concerns? Direct your correspondence to sisterhood@temple-sholom.org. Your response will arrive shortly.

Please keep in mind that Sisterhood belongs to all Temple Sholom women. When your Welcome Back packet arrives this summer, be sure to join Sisterhood and let your voice be heard. Sisterhood is for all Temple women, young, older and in-between!

***REMEMBER, OUR SISTERHOOD IS
YOUR SISTERHOOD.***

***WITHOUT YOU, WE ARE
ONE WOMAN SHORT.***

ISRAEL TRIPS

Save the date for an Adult Trip to Israel with Rabbi Rigler and your Temple Sholom community. Adult Trip: December 2-13, 2017.

Click this link for more details on the Adult Trip <http://www.arzaworld.com/temple-sholom-in-broomall-israel-in-depth-program.aspx>

High School In Israel-NFTY-EIE (Eisendrath International Experience) is now looking for applicants for an incredible experience and scholarship opportunity to study in Israel. Contact Elise Englander eenglander@urj.org or call her at 212-650-4095.



Lobby Collections

We are now collecting coats, hats, gloves and comforters for the **Nationalities Service Center**. This organization provides comprehensive services to refugees and immigrants from around the world. <https://nscphila.org/stories>.

They can also use pots/pans/kitchenware items, glasses, dishes, and gift cards.

HILLTOPPERS NEWS

Hilltoppers Ends on a High Note; Makes Great Plans for Next Year

May was such a wonderful and busy month for Hilltoppers! Our Closing Dinner, held at the end of the month, featured delicious deli food from Mrs. Marty's, fabulous entertainment by the dancers and musicians of **FiddleKicks** (an Appalachian clogging troupe), all followed by a dessert reception. And that wasn't all! We also honored long-time and beloved Temple Sholom Hilltoppers member Sara Shapiro with the Righteous Person Award. With a beautiful tribute to Sara by Hilltoppers President Cindy Meyer, and acceptance words by Sara, herself, participants were truly treated to some moving moments.

We can't wait to share photos with you next month!

Our final Book Discussion Group was so well led by facilitator Nancy Handwerger. We had a great time talking about *The Year of Living Biblically*, by A.J. Jacobs. Many thanks to Nancy for having sent us special, thought-provoking questions in advance of our meeting.

The Israel Fun Fest last month was an intergenerational event held with Temple Sholom's Preschool to celebrate *Yom HaAtzma'ut* – Israel's Independence Day. Hilltoppers members had a good time sharing in the festivities and enjoying the Israeli dinner.

Hilltoppers had two special meetings in May to determine programs and book selections for the 2017 to 2018 year. We look forward to sharing all this information with you soon.

Please direct your donations to the **Hilltoppers Fund** by making checks payable to "Hilltoppers of Temple Sholom." Your donations will be listed in the Temple Tidings.

Our Board meets once a month, usually the first Thursday of the month at 10:30 a.m. in the Temple library. We were pleased to welcome a new Membership Co-Chair to our Board: Honore Poch.

Hilltoppers is Temple Sholom in Broomall's exciting community of active 55+ members who enjoy music, education, dance, learning, controversy, reading, and

so much more. Our programs for the 2017 to 2018 season will offer something for absolutely everyone.

When you receive your Welcome Back packet this summer, please do consider becoming a member of Hilltoppers! It's only \$20 for the year, which entitles you to free admission to all programs ... and all programs include refreshments. Members can also be active participants in the Book Discussion Group and will receive periodic email reminders of all events.

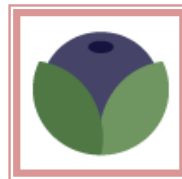
If you wish to attend programs without becoming a member, or if you want to invite non-Temple members to join us, our events are offered for a \$5.00 optional contribution, unless otherwise noted. Two copies of every book selection have been purchased and are available in the Temple library for you to check out.

If you have any questions, please contact Hilltoppers President Cindy Meyer at CFrogs@aol.com or phone her at 610-359-1133.

Doing Mitzvot in the Community?

Please let us know so we can share your story with the congregation! Contact the Temple Tidings Editor at tidings@temple-sholom.org

Center for Nutritional Healing
Get well. Stay well.



Cindy Harrington, Founder
CenterForNutritionalHealing.com
Phone: 484-938-7691 | cindy@centerfornutritionalhealing.com

WOMEN'S SPIRITUALITY

As Women's Spirituality brings another year to a close, we welcome all women members of Temple Sholom to join us in the Temple library on June 14th at 7:30 p.m. when Rabbi Leah Berkowitz will bring to us another spiritually enriching program.

Women's Voices on the High Holy Days



How have women experienced the High Holy Days throughout the ages? What roles did they play and what understanding did they bring to the texts and traditions of Rosh Hashanah and Yom Kippur? Together we will explore women's contributions to *Mishkan HaNefesh*, as well as traditional biblical and rabbinic stories about women on the High Holy days.

On the High Holy Days we are called to take stock, examine the inventory of our deeds, on a personal level and as a society. What is the status of women from a Jewish and High Holy Holidays perspective?

While we're busy figuring out how to take care of everyone else, where do we fit in? How can this sacred time nourish our spirits and give us the strength and wisdom to face what lies ahead? Is there a way that we, as women, can uniquely connect spiritually or emotionally with this time of year?

We find ourselves in the text of the High Holy Days. These days are our days. Their themes reflect us, our struggles, our deepest desires. Looking to the women prominently featured in the Torah and Haftorah portions for Rosh Hashanah, the story of Sarah and Hagar, as a whole, portrays female relationships: sisterhood, friendship, and camaraderie, ultimately even betrayal. Not perfect, but then again, neither are we.

Our biblical women experience the same things we experience. These are real stories that speak to all of us.



Thinking ahead for next year, we invite all Temple Sholom women to join us in September when we will begin our programs for 2017-2018 with many interesting, thought provoking and spiritually enriching topics. We meet once a month, usually on a Wednesday evening between 7:30 p.m. to 9:00 p.m. While most of our meetings are in the Temple library, sometimes the location, day and time can change. Each session is a separate program and no prior attendance or experience is necessary to enjoy and get a great deal from every program. All women members of Temple Sholom are welcome to come, whenever it is convenient; to share in friendship and learning with Women's Spirituality.

Now that we bring this year of learning, sharing and spiritual growth to a close, we would like to take this opportunity to thank Temple Sholom Sisterhood for their generous gift and the generous donors who acknowledge special occasions with a donation to the Women's Spirituality Fund at Temple Sholom.

In closing, please mark your calendars for Wednesday, June 14 at 7:30 p.m. when we will hear the *Women's Voices on the High Holy Days* speak to us presented by Rabbi Leah Berkowitz.



MITZVAH MEALS PROGRAM

Sign Up Today

Together as a community, we provide meals for the Delaware County Life Center.

This year mitzvah meals will take place:

June 13 and August 8.

Please click on the link below to see how you can help.

<http://www.signupgenius.com/go/10c044da5ac22aaf85-life>



2017-2018 SLATE OF OFFICERS AND BOARD MEMBERS

NOMINATIONS FOR BOARD 2017- 2019

EXECUTIVE BOARD

Steve Granoff, Treasurer

Nancy Bloomfield, Financial Secretary

GENERAL BOARD

Two Year Term 2017-2019 (6 Members): One Year

Alternate Term (Remaining Nominees)

Existing Board Member Seeking Re-Election:

Marc Albero

Evalyn Elias

Evan Gold

Nancy Hays

Ira Kedson

Eric Lieberman

Congregants Seeking Election:

Michael Galvin

Donna Hendel

Robin Stevens

Two Year Terms 2016-2018 (Continuing Officers)

Mary Ann Gould, President

TBD, Executive Vice President

Laurie Browngohl, Senior Vice President

Jim Meyer, Secretary

Shannon Farmer, Member-at-Large

Margaret Husick, Member-at-Large

Two-Year Term 2016-2018

Continuing Board Members

Melissa Fein

Susan Friedman

Beverly Granoff

Michael Richardson

Terri Watson

Brotherhood Representative: Mitch Wolfson

Hilltoppers Representative: Cindy Meyer

Sisterhood Representative: Barbara Barr

Immediate Past President: Emily Mendell

INVITATIONS FOR ALL OCCASIONS!

Bar/Bat Mitzvah

Wedding

Newborn Announcements

Stationery

Save the Date

Contact Nancy at 610-325-4297

or haz@comcast.net

for more information



Leslie Greenfield on the engagement of her daughter
Jill, to Sunny Seelamsetty

Michele & Michael Cooperstein on the birth of their
granddaughter, Josephine (Josie) Leora Cooper

Todd, Ebony & Gabe Goldsmith on the birth of their
son and brother, Micah Corley Goldsmith

Lara Briggs, a winner of Conestoga High School's
Central League writing contest

Arthur & Jacqueline Matusow on the birth of their
granddaughter, Eleanor Louise Davies

Lori Green on her graduation from HUC with an
Executive Masters Degree in Jewish Education

Carole Landis on the occasion of becoming a Bat
Mitzvah in Israel

***Let's share our happy occasions, milestones and
good news with one another. Please submit your
information (anniversary, birth, graduation, new
job, etc.) by Tuesday of each week to our Temple
office:***

director@temple-sholom.org



IT'S BEEN A FABULOUS YEAR AT THE PRESCHOOL



Like the Jews during the Exodus, the Temple Sholom Preschool is on the move! On Lag B'Omer, thirty- three days after Passover, we celebrated with simulated camp fires, complete with s'mores and a fabulous field day with Coach Liz. The sun was shining and the kids were beaming as we enjoyed the celebrations on the happiest day between Passover and Shavuot.

Of course we are now getting ready for Shavuot and learning the story about Moses and our ancestors going to Mount Sinai to receive the Torah.

Then, it's off to end of year parties, Family Fun Fair and move-up days! We have done much learning and growing all year long. What an amazing year at Temple Sholom Preschool!

CELEBRATING ISRAEL INDEPENDENCE DAY WITH THE HILLTOPPERS



On June 26, Camp Menschy begins! There is much in store for a fun-filled summer!

Register now for camp and school, while there is still space available!

Wishing all our families a happy and safe summer!

~ B'Shalom, Miss Brooke

Brooke Zeitz M.S.Ed.

Early Childhood Education Director

preschool@temple-sholom.org 610.886.2065





Now Enrolling for 2017-18



"Temple Shalom Preschool is a very special place where my children have thrived in a loving and nurturing environment. It is indeed a hidden gem." – Katie G., parent of three

Join Our Preschool Community – Interfaith Families Welcome

- Ages 3 months through kindergarten
- Flexible full and half-day options
- Engaging early and late care
- Licensed Kindergarten and Kinder-Enrichment
- Certified and experienced staff
- Hot lunch available, snacks provided
- 6-Week summer camp program
- Soft-floored playground

Arrange a visit to see
why families love our school.

Contact our Director,

Brooke Zeitz

(610) 886-2065

preschool@temple-shalom.org



AROUND RIMON!



What an amazing year it has been for *Rimon*! From reading and making meaning of prayer, to social justice, to our connections to God, and even learning how to play “gaga” the year was full of deep learning and fun for Sunday *Rimon*, *Rimon* Hebrew, and *Rimon* Noar.

Our final trimester of Sunday *Rimon* was extra special as each “team” was paired with a committee of Temple Sholom. Each of the groups studied and worked together to understand the committees’ roles through a Jewish lens. Along the way the students, parents, and committee members built relationships and community connections. Thank you to...



Laurie Browngoehl and the Membership Committee as they worked with *Rimon*’s *Bonim* (Kindergarten & 1st grade) team to create art work and more to welcome members ... new and old.

Barbara Barr and Mitzvah Corp as they worked with *Chaverim* (2nd & 3rd grades) to create centerpieces for the community seder at Temple Sholom, make baby blankets for new Temple Sholom babies, bake brownies and cook soup for those who are ill and/or homebound, and create get-well cards.



Vera Neumann-Sachs and the House and Grounds Committee with their work with *Olim* (4th & 5th grades) as they beautified the grounds around Temple Sholom by planting flowers, created permanent name plaques for flora and fauna, polished ritual silver, cleaned signs and benches, and more.

~ Lori Green, Director of Education
educator@temple-sholom.org



A religious school is only as good as those who put their heart, soul, and time into ensuring success for each and every child. Our faculty is the BEST! Thank you to our teachers:

Gloria Becker	Abbey Krain
Eileen Buckwalter	Marissa Kuperschmidt
Beverly Cylinder	Cantor Marx
Susan Edelstein	Robin Matthews
MaryAnn Gould	Dave Mendell
Nancy Hays	Galen Newman
Anna Haywood	Rabbi Rigler
Donna Hendel	Matt Rosenbaum

Thank you to our Teen *Madrichim* and Song Leaders:

Andrew Danowitz	Josh Kleiman
Shana Deitz	Scott Massey
Raina Farmer	Chase Mendell
Jack Fletcher	David Pessin
Ellie Gordon	Emily Scolnick
Leah Isayev	Matt Segal
Sofia Isayev	Erica Watson
Schott Kaplan	Gillian Watson
Jack Kedson	Ely Miller-Wilson

And to our *Rimon* Assistant, Claire Williams!

We are blessed at *Rimon* to have incredible volunteers who are always behind the scenes sharing their time and talent. To our Co-Chairs of Education – Ira Kedson and Susan Friedman and the MANY parents who have helped out through the year whether it be for Trivia Night, Purim Carnival, or in-classroom help ... we are blessed by your presence.

It is bittersweet that we say *l'hitraot* (until we meet again), to two of our faculty members. Eileen Buckwalter and Beverly Cylinder are “retiring” after 33 YEARS of teaching at Temple Sholom. Both of these women are amazing teachers and have left their legacy through the many students whose lives that have touched over the years.

Please go to the next page and take a moment to read a few reflections that Beverly Cylinder has shared!





33 YEARS - A TEACHER'S THOUGHTS

After making the difficult decision to retire from teaching, I was asked to write a short reflection on my 33 years at Temple Sholom. As you might imagine, this was easier said than done!

My Sunday mornings during the school year since 1985 have been spent at Temple Sholom, and 26 of those years were also spent teaching Hebrew school many afternoons. I have been fortunate to teach so many young people about our Jewish history, our unique and meaningful customs, our joyous and even sad holidays, and our beautiful and age-old Hebrew language.

To pick one thing that would sum up why I continued to teach all those years, it would have to be seeing the enthusiasm and eagerness to learn on the faces of those beautiful children each year and thinking, how lucky it is to be given the awesome responsibility to impart the essence of Judaism each week. I realize I did not reach all the children the same way. They are all different and very unique. My hope is no matter where they go they will always feel pride in being Jewish from their years at Temple Sholom.

Thank you to all those students for making my Sundays so special for so many, many years!

Todah Rabah, Beverly Cylinder

OUR AMAZING LORI GREEN

Entering her 20th year as Temple Sholom's Director of Education, Lori Green received an Executive M.A. in Jewish Education from Hebrew Union College – Jewish Institute of Religion (HUC-JIR) in New York in May 2017. For the past 30 months, while working full time at Temple Sholom, she also attended classes at all four of the HUC-JIR sites in New York, Los Angeles, Cincinnati and Jerusalem, as well as participating in e-learning classes.

As a life-long learner, Lori's goals for the program were to enhance her knowledge of Judaism, strengthen her understanding of education and refine her leadership capacity. Our community gains a tremendous amount of Jewish knowledge and experiences through the opportunities that Lori's leadership provides. We are so grateful that she accepted the challenge to learn more so that she can challenge us!

Mazel Tov to Lori Green from Temple Sholom in Broomall on your amazing accomplishment. *Todah Rabbah* to her supportive husband, Cantor David Green for being there.



GIFT GARDEN NEWS

Come Visit the Gift Garden for all of your holiday shopping. The Temple Office staff is happy to open it up for you anytime during normal office hours.

Please call Nancy Hays at 610-325-4297 for your own personal appointment for invitations.

The Gift Garden is always looking for volunteers to help us throughout the year. Please contact Linda Phillips at 610-220-2148.

JUNE B'NEI MITZVAH



Shana Deitz, daughter of Adam and Lisi Deitz, will become a Bat Mitzvah on June 17th. Joining her on this special day will be her sister, Jenna Deitz, grandparents Kenneth and Diane Sheinen, grandparents Bernard and Harriet Deitz, uncle Andrew and aunt Eve Sheinen, cousin Alexana Deitz, and The Kabat Family, family friends from Colorado.

Shana is in the 7th grade at Great Valley Middle School. Her special interests include: singing, playing the guitar, and song leading. She has been honored with the Presidential Silver Award for Community Service, Presidential Gold Award for Community Service, Girl Scouts

What I did for my mitzvah project was help out in the 2's classroom at our very own preschool. It was so interesting to think that one day those cute little kids will someday become adults. They were so care-free; it's hard to imagine them being stressed-out adults. Their perspective of the world is totally different from ours, as they love to play, have fun, and just enjoy the world around them. Although I was there to help them learn, I learned more from them than they did from me. I learned to love the little things in life. I also learned to try to be more carefree. And most importantly, I learned that it can be good to see things from another perspective.

Any other information you would like to share? I can't wait to become a Bat Mitzvah.

Ty Harrison Gould, son of Ken and Marie Gould, will become a Bar Mitzvah on Saturday, June 24. He will be joined on this day by his sister, Natalie, grandparents Jim and Geri Gould from Sun Lakes, AZ and Bill and Sheila Stagg from Lafayette, LA. Also attending are aunts, uncles, and cousins from across the country including Virginia, Ohio, Louisiana, New Jersey, New York, Arizona, California and Texas.



Ty is going into the 7th grade at Valley Forge Middle School in Wayne in the T/E School District.

Ty is an avid sports fan, and follows the sports of baseball, basketball and football with great interest. He is a fan of both Philadelphia and Boston sports teams, loyal to his Dad's New England roots as well as his hometown. Ty discovered rock climbing a couple of years ago and is a regular climber at Philadelphia Rock Gym. He takes drum lessons and plays percussion with the school band. He also enjoys playing tennis and golf.

For his Mitzvah Project, Ty volunteered at the Jewish Relief Agency, a Coaches vs. Cancer event, and held an Alex's Lemonade Stand. At the JRA, he packed and delivered boxes to the needy with his family. One woman was so grateful, she gave Ty and his sister Natalie each a lollipop and a dollar bill. Ty also volunteered with his Dad at an American Cancer Society event, Coaches vs. Cancer. He helped out by greeting people and helping them find seats. He learned how bad the disease is and all of the people who have died because of cancer.

He decided to help the cause by holding an Alex's Lemonade Stand scheduled for June. Alex Scott was a young girl who was diagnosed with neuroblastoma, a serious bone cancer. Alex sadly passed away at the age of 8 but her organization has gone on to raise \$140 million. He hopes to raise a few hundred dollars for the cause. You can find his donation page at <https://www.alexslimonade.org/mypage/1316049>



Will Rubin will become a Bar Mitzvah on June 24, surrounded by his parents, Eric and Aimee Rubin, his brother, Andrew, and his sister Natalie. Also in attendance will be his great grandmother, Annette Kasendorf, his paternal grandparents, Sarah and Ira Rubin from Red Bank, NJ, and his maternal grandparents, Marion and Richard Taxin from Rose Valley. In addition, many aunts, uncles, cousins and family friends will join in Will's celebration.



Will (by the time that you see this) will have nearly successfully completed 7th grade at Springton Lake Middle School. When not studying or 'Snapchatting' his friends, he can be found playing the drums, playing lacrosse, or participating in a school or local theater production. Recently, Will has become a watch enthusiast and a local promoter of the Vineyard Vines brand.

For Will's mitzvah project, he chose to help families of the Domestic Abuse Project of Delaware County. Wanting to give back to our local community, he organized and executed a 'Spoonful of Sugar' candy bar during a local theatre production of Mary Poppins (he played Michael Banks). With the \$800 in profit, he was given the holiday wish lists from each of the families living at the center. He was able to fulfill every single wish in order to help these women and children begin a new chapter in their lives.



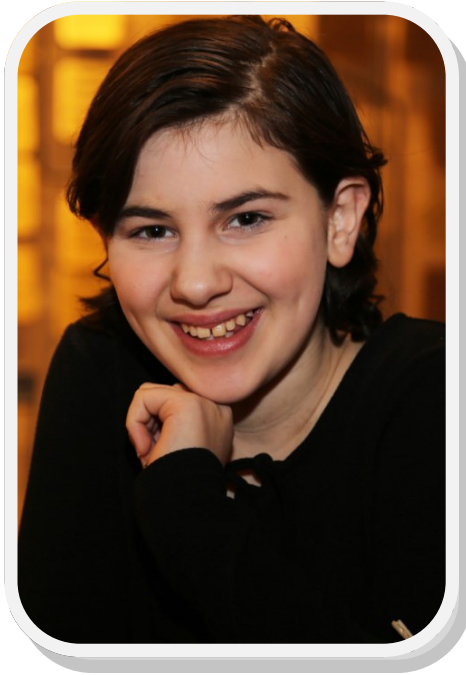


The Congregation Is Invited to Celebrate with the Rigler Family as

Maya Gabrielle

becomes a Bat Mitzvah on

Saturday, June 10, 2017 at 10:30 AM at Temple Sholom



To help us prepare a light Kiddush in honor of Maya, please RSVP to the Temple Office by June 2.

Please, no gifts. If you are so moved, the family asks that you make a donation in Maya's honor to Temple Sholom or to Alex's Lemonade Stand.

Note: Maya and her family will be celebrating with her Keneseth Israel family in Elkins Park on Friday, June 9 at 8 PM. Shabbat services at Temple Sholom will be lay lead that evening.

Maya Rigler will be celebrating her Bat Mitzvah June 10th with her Temple Sholom family and friends! Maya is very excited for the day and has been working hard to make the service unique and her own. Maya has attended Camp Harlam since she was born and it is a very important part of her identity. She has attended *Rimon* and participated in ***Rosh CHodesh: It's a Girl Thing***.

Maya is a hard working student at Radnor middle school and loves language arts. She works as a baby sitter for many families (she is available just call) and loves spending time with little kids! She is a Red Cross trained sitter! Maya can often be found with a book or her phone in her hand. She also enjoys family time with her brothers and cousins. Traveling is also something Maya really enjoys!



She continues her work with Alex's Lemonade Stand for her Bat Mitzvah project and has set a goal of raising \$400,000 by the day of her celebration. Right after her service her plan is to continue the celebration at the Alex's Original Lemonade Stand to celebrate her accomplishment. Her work with Alex's has been raising money, speaking at many events, hands on work and much more. The connection to Alex's has brought Maya much joy and she has put a great deal of energy into the work.

JR. TOASTY
6TH, 7TH & 8TH GRADERS
CONTACT GALEN

GALEN.NEWMAN.3@GMAIL.COM

A TASTE OF TOASTY
3RD, 4TH & 5TH GRADERS
ROBIN WEINSTEIN

WEINSTEINROBIN@YAHOO.COM
610-389-3370



**CLICK BELOW
TO VIEW US ON
YELP! WRITE
A REVIEW &
ADD SOME
PHOTOS.**

**[HTTP://WWW.YELP.COM/BIZ/
TEMPLE-SHOLOM-IN-BROOMALL-
BROOMALL](http://www.yelp.com/biz/temple-sholom-in-broomall-broomall)**



**DMAX
FOUNDATION**
Together we light the darkness

Our mission is to eliminate stigma and encourage safe and caring conversations about mental health issues and emotional pain in our youth.



OF COLLEGE STUDENTS SAY
THEY ARE SO **DEPRESSED** IT
IS **DIFFICULT** TO **FUNCTION**
WHAT CAN WE DO?

You can help DMAX Foundation to create **DMAX Clubs** on college campuses. The Clubs are caring and supportive spaces for students to talk about how they're doing, how they're friends are doing, and how they can help each other.

Find out how at:

www.dmaxfoundation.org



TOASTY

May's ToaSTY event was a success! We went on a walk on the Cynwyd Heritage trail to Manayunk. Once we got there, we walked on the Towpath to a yogurt shop called Whirled Peace. We grabbed some delicious yogurt with colorful toppings. On the way back, we had quite an adventure when it started to rain, but we made it back with sunny weather and good memories.

This month, we are having our second Shul-in of the year. It will be taking place on June 3-4, time TBD. Please join us if you are in grades 8-12 for games, and other fun activities. Don't forget to bring your pillows and sleeping bags!

Recently, the Board for the 2017-2018 year of ToaSTY had been chosen. The Board is as follows:

Co-Presidents: Scott Massey and Jack Kedson
Programming VP: Sofia Isayev
Media VP: Erica Watson
Membership Chair: David Massey
Sunshine Chair: Sydney Goldberg

Mazel Tov to everyone who made it on the board.



If you have any questions or concerns, please contact Marissa Kuperschmidt, ToaSTY Advisor at toasty@temple-sholom.org.

Erica Watson, Treasurer

DISCUSSION GROUP

The Temple Sholom Discussion group has been meeting for over 5 years on Sundays. Meetings are now bimonthly with a break over the summer. The topics vary from social issues to archeology, and politics to science.

We set our own agenda, approach from both the individual and Jewish perspective and provide equal time for all to share opinion and perspectives. We add an occasional movie that generates conversation. All are welcome. We meet at a member's home, or occasionally the Temple, and share food conversation and opinion. For information contact Bob Slater at altrok@aol.com.



HAVDALAH IN THE HOME

The Temple Havdalah at home group has been meeting for about 4 years on late Saturday afternoons. We share song, Birchot Havdalah and then a shared meal with conversation and friendship. All are welcome. I would also encourage groups of friends to add this to your Jewish life and expand your circle. To join our present group or for help forming your own contact Bob Slater altrok@aol.com.

A Friendly Reminder:

**Everyone Deserves
a Little Shabbat Peace**

Unless it is an emergency, please be aware that clergy and staff may not reply to your work related emails or "business" phone calls until after Shabbat ends.

ONEG SPONSORS FOR JUNE

June 2

The Farhy Family in honor of Seneca and Michael's B'nei Mitzvah

June 16

The Deitz Family in honor of Shana's Bat Mitzvah

The Jaffe Family in honor of Jolie's Bat Mitzvah

June 23:

The Gould Family in honor of Ty's Bar Mitzvah

The Rubin Family in honor of William's Bar Mitzvah

Many thanks to the Hunt/Ouslander Families for sponsoring the May 12 Oneg in honor of the baby naming of Paul Charles Ouslander

And thanks to David & Missy Lowdermilk for sponsoring the Oneg on May 19 in honor of David Lowdermilk and Anna Levinger's Auf Ruf

Celebrating a Simcha?

SHARE IT WITH AN ONEG!

Honor your loved ones and the Temple by sponsoring an Oneg and sharing your special day with us.

A birthday, anniversary, baby naming, or marriage blessing are all perfect occasions.

Please contact the Temple office at 610-356-5165 or

Info@temple-sholom.org for details.

FREE WIFI CONNECTION!

Temple Sholom proudly offers fast, free wifi throughout the building and the annex.

One network name. One password.

Network: **Temple-Sholom-Guest**
Password: **Sholom**

SISTERHOOD HAPPINESS & MEMORIAL CARDS



Did you know that Sisterhood can handle all of your "Hallmark" needs? For \$5.00, you can send a Happiness/Memorial Card for any occasion, including birthdays, get well, sympathy, etc.

To: Jeffrey & Mette Farhy
From: The Sisterhood of Temple Sholom
Mazel Tov on the B'nei Mitzvah of your children, Michael & Seneca Farhy

To: Rabbis Peter & Stacy Rigler
From: The Sisterhood of Temple Sholom
Mazel Tov on the Bat Mitzvah of your daughter, Maya Rigler

To: Adam & Lisi Deitz
From: The Sisterhood of Temple Sholom
Mazel Tov on the Bat Mitzvah of your daughter, Shana Deitz

To: Richard & Kathleen Jaffe
From: The Sisterhood of Temple Sholom
Mazel Tov on the Bat Mitzvah of your daughter, Jolie Jaffe

To: Kenneth & Marie Gould
From: The Sisterhood of Temple Sholom
Mazel Tov on the Bar Mitzvah of your son, Ty Gould

To: Eric & Aimee Rubin
From: The Sisterhood of Temple Sholom
Mazel Tov on the Bar Mitzvah of your son, William Rubin

To: Art Zabell
From: Cindy & Jim Meyer
Condolences on the death of your beloved son-in-law, Matthew Rike

To: Steve & Barbara Clarke
From: Cindy & Jim Meyer
Temple Sholom Sisterhood
Shirley & Marty Birenbaum
Fran & Norman Epstein
Gloria & Ed Kresch
Barbara & John Barr
Condolences on the death of your beloved brother & brother-in-law, Jeffrey Clarke

JNF TREES AND WATER FOR ISRAEL

A tree was planted by Elizabeth G. Mellman in memory of Elizabeth M. Kennedy, dear friend of Marcie Feczko.

A Ring of Three Trees was planted by Barbara & John Barr in memory of Renee Campion, beloved wife of William Campion, and dear friend of Temple Sholom.

A quick and easy way to honor and/or remember a friend, relative or event is to have one or more trees planted in Israel. Or a donation may be made to help meet the water needs there. In either case, a lovely certificate is sent to the honoree and/or family. Tree Certificates are \$18.00 each.

*To order Happiness & Memorial Cards
and
Jewish National Fund Trees &
Water for Israel contact*


*Shirley Birenbaum at 610-328-2171 or
email surabassa@aol.com.*



OH! WHAT A NIGHT 60 YEARS OF TEMPLE SHOLOM ON BROADWAY

Save the Date! On Sunday, November 5, 2017, we are proud to present Neil Berg's FABULOUS production of "OH! What A Night - 60 Years of Temple Sholom on Broadway." All proceeds will benefit the replacement of our 60-year-old Heating, Ventilation and Air Conditioning (HVAC) and electrical panels.

~ Steve Granoff and Kate Jaffe, Co-Chairs

A teal silhouette of a baseball player in mid-swing, wearing a helmet and holding a bat. The player is positioned in the center of the page, with a light blue rectangular box overlaid on their midsection containing text.

The Temple Sholom Chai Men are looking for Competitive Athletes!

Attention Dads and 18+ male athletes

Temple Sholom plays in the 12 team Lower Merion Synagogue Softball League.

We play Sundays from 9:45am to 11:45am on fields within 20 minutes of TS

The league plays from April to August including playoffs

Good competition and a chance to meet other congregations

Please contact Dan Lipowitz at theseus1@verizon.net
for more information

Practice starts soon! Please respond ASAP



Shabbat in the Park

Friday, June 2, 2017

**Merry Place
Havertown, PA**



5:30 pm Guided Walk in the Park with Pat Rosenblatt

6:00 pm Barbecue & Oneg Shabbat

7:00 pm Shabbat Evening Service



Menu: *Hot dogs, burgers, (veggie burgers must be pre-ordered), BBQ chicken, corn, green salad, pasta salad, chips, dessert & drinks.*



Bring folding chairs, blankets and insect repellent.



In case of rain, Shabbat in the Park will be held in the Multipurpose Room.

? For more information, contact the Temple Office at 610-356-5165

Directions from Temple Shalom: Turn left out of the Temple Shalom parking lot towards West Chester Pike/Route 3. Make a left onto West Chester Pike/Route 3. Proceed 1.9 miles and turn right onto Glendale Road (traffic light at Manoa Shopping Center). Continue on for exactly 1 mile and Merry Place will be on the right.



Yes, count me/us in for the BBQ dinner on June 2, 2017!

_____ Adults (13 and up) @ \$12.50 = \$_____

_____ Children (3 - 12 years) @ \$5.00 = \$_____

_____ # pre-ordered veggie burgers

TOTAL ENCLOSED \$_____ check #_____

RSVP no later than May 26, 2017. Limited walk-ins will be accommodated.

Add \$2.00 per person.

Please make check payable to Temple Shalom.

Name _____

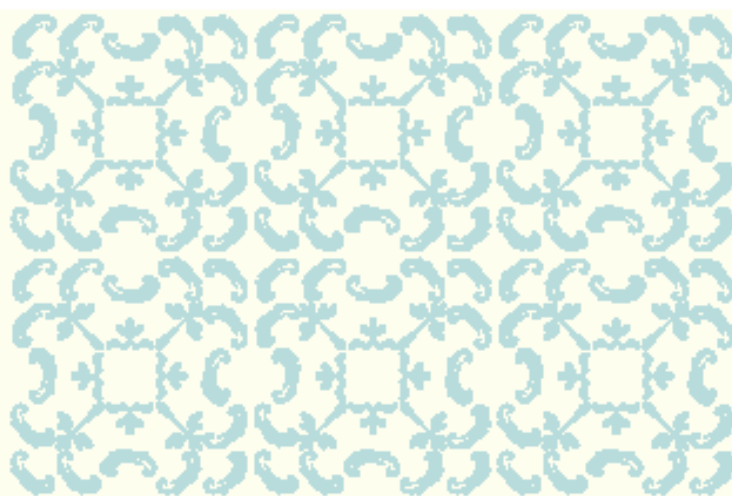
Phone _____ **E-mail** _____

**Mail reservation form and check to:
Temple Shalom, 55 North Church Lane, Broomall, PA 19008**



June 6, 2017

7:30 pm



52nd Annual Delaware Valley Jewish Choral Festival

Featuring:

Chavurat Hazemer

Choir Fargenign

Makhelat Michael Community Choir of Mishkan Shalom

Har Zion Temple

Makaylah, Or Chadash

Philadelphia Workman's Circle Chorus

Temple Brith Achim

Temple Sholom in Broomall

Reception to follow.

Free and open to the public.

HAR ZION TEMPLE

1500 Hagys Ford Road

Penn Valley, PA 19072



ANNUAL CONGREGATIONAL MEETING

Date: MONDAY, 06/19/17

Time: 7:30 pm

Join us for our Annual Congregational Meeting to recap the wonderful year we had and look forward to the future.



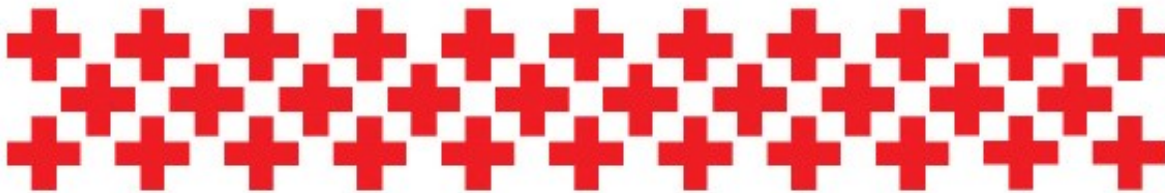
- Vote on Board slates
- See slideshow of highlights of the year
- Recognition of outgoing Board members
- Volunteer Appreciation awards



For more information, contact the Temple office,
(610) 356-5165,

American Red Cross

Give blood. Help save lives.



Blood Drive
Temple Sholom

Multi-Purpose Room
55 N. Church Lane
Broomall, PA 19008

Wednesday, June 28, 2017
2:00 PM to 7:00 PM

To make an appointment, please call:
Pat & Harriet Rosenblatt, (610) 356-5105 or
Marissa in the office (610) 356-5165. Ext: 104.

You can also visit www.redcrossblood.org and
enter sponsor keyword: Temple Sholom

1-800-RED CROSS | 1-800-733-2767 | redcrossblood.org | Download the Blood Donor App

©2017 The American National Red Cross

LEAFLET 12-140-1201-02-0000

Advertise in *The Temple Tidings*

Advertising contracts are arranged and paid IN ADVANCE of publication through the Temple Office. Call Elyse at 610-356-5165 or email her at:

tidings@temple-sholom.org

Advertising rates are posted on our website at:

www.temple-sholom.org/media-galleries/newsletters

The Temple Tidings Publication Guidelines

Deadline for the July/August Combined Issue is June 5

The Temple Tidings is published monthly. Material submitted for publication may be edited for style, length and content. Anonymous submissions will not be printed.

Please make submissions by EMAIL if possible. A confirmation message will be sent on receipt of your e-mail or send submissions to the Temple TYPEWRITTEN or CLEARLY PRINTED. Questions?

tidings@temple-sholom.org



TEMPLE SHOLOM STAFF AND BOARD

Professional Staff

Rabbi Peter C. Rigler
Cantor Jamie Marx
Rabbi Emeritus Mayer Selekman
Cantor Emerita Patrice Kaplan
Abbey Krain, Executive Director
Lori Green, Education Director
Brooke Zeitz, Early Childhood Ed. Dir.
Marissa Kuperschmidt, Communications Assoc.
Claire Williams, *Rimon* Admin. Assist.

Temple Sholom Board of Trustees

(two year term 2015-17)

Marc Alberio, Evalyn Elias, Evan Gold, Nancy Hays, Ira Kedson, Eric Lieberman,

(two year term 2016-18)

Melissa Fein, Susan Friedman, Evan Gold, Beverly Granoff, Michael Richardson, Terri Watson
(alternate) Jeff Farhy

BIMAH BASKETS



Festive baskets to decorate the Bimah and benefit Temple Sholom's Religious School and the Life Center for Eastern Delaware County.

Two Bimah baskets are \$150 (\$75 each)

and a smaller Oneg Basket is available for the Oneg Table for \$45.

Interested in ordering the baskets? Please contact Sandy Barth at

610-353-0293 or email her at

sandy.she@comcast.net

The Temple Tidings



**Temple Sholom
in Broomall
55 North Church Lane
Broomall, PA 19008**

610-356-5165 Phone
610-356-6713 Fax
610-886-2065 Education Office
www.temple-sholom.org
tidings@temple-sholom.org

Temple Sholom Executive Board (2016-2018)

Mary Ann Gould, President
Position open, Executive VP
Laurie Browngoehl, Senior Vice President
Steve Granoff, Treasurer (2017)
Jim Meyer, Recording Secretary
Nancy Bloomfield, Financial Secretary (2017)
Shannon Farmer, Member at Large
Margaret Husick, Member at Large
Emily Mendell, Immediate Past President

Auxiliary Representatives

Mitch Wolfson, Brotherhood
Cindy Meyer, Hilltoppers
Barbara Barr, Sisterhood
Marissa Kuperschmidt, Youth Group Director
Galen Newman, Jr. Youth Group Director



Our Caring Hospice

Trained Temple Sholom
volunteers are here to help!

Please call us - we are here for you.

Contact Rabbi Rigler and Cantor Marx
at the Temple or call
Pam Haas 484-802-1186 or
Amy Berkowitz 610-353-8077

MITZVAH CORE CARES!

Please let us know if you are
aware of someone:

- ★ Entering the hospital
- ★ With a new baby
- ★ Death in the family
- ★ Shut-in
- ★ Other



We want to help! Working together we are truly a
caring community.

PLEASE CALL THE TEMPLE OFFICE
AT 610-356-5165

ONGOING COLLECTIONS

Toiletries are needed for the Life Center of
Delaware County - bring to the Temple Office.

Canned Goods are always needed to help with
empty pantries - a donation box is located in the
coat-room closet.

TEMPLE SHOLOM'S LEGACY PROGRAM



Becoming a *L'Dor V'Dor Legacy Member* is a simple process that
has a significant impact for our
community. To find out how,
please contact
Art Zabell at 484-919-7649 or
Abbey Krain at 610-356-5165.

Your commitment will help provide for the
continued success of Temple Sholom so your
children and your children's children can experience
the fond memories of the open, inclusive and
accepting Jewish perspective at Temple Sholom.

TEMPLE FUNDS

Cantor's Discretionary Fund

Contributions to this fund will be used at the discretion of our Cantor.

Danowitz Junior Youth Fund

Excellence in Early Childhood Education Fund

To support the programs of the Etta Natalie Rosenblatt Preschool.

Financial Assistance

To offset the reduction of revenue incurred when a Temple Sholom family cannot afford to
pay their total dues. Contributions go directly into the General Fund.

General Fund

To support Temple operations.

Hospice and Healing Fund

To assist the Hospice Committee in carrying out its support programs.

Howard Weiner Library Fund

An endowment fund in which the interest is used to purchase books and supplies for the
library.

Inclusion and Special Needs Fund

To purchase services, supplies, and equipment to assist congregants, students, and
guests in need of accommodations that enable them to participate fully in all aspects of
congregation life.

Jubilee Endowment Fund

To secure the future of Temple Sholom in Broomall.

Judith Bernick Music Fund

An endowment fund in which the interest may be used for the music program.

Marlene B. Kleinman Campership Fund

Interest is used to send students to a URJ camp each year.

Mayer Selekmán Jewish Leadership Fund

To provide grants for graduate study toward becoming a Jewish professional.

Rabbi's Discretionary Fund

Contributions to this fund will be used at the discretion of our Rabbi.

Religious School Education Fund

To support programs, special events and materials for education at all levels.

Contributions can be earmarked for Women's Spirituality Group studies at the donor's
discretion.

Cantor Patrice Kaplan Chair for Sacred Music Endowment

To endow the cantorial position at Temple Sholom, ensuring the future of Jewish music in
our congregation.

Sanctuary Book Fund

To defray the cost of purchasing books for our sanctuary. A book plate is placed in each
book indicating the donor's name and the occasion, for a minimum donation of \$36.

Scholar-In-Residence Fund

To help bring scholars to present and engage with the Temple Community, since 1983.

Technology Fund

To maintain and improve all aspects of technology, including our new Webcast used by
Temple Sholom.

Temple Beautiful Fund

To improve and maintain the aesthetics of the Temple, including decor, furnishings,
grounds and gardens.

Tzedakah (Food) Fund

To feed the hungry in our community. Contributions are distributed at the close of each
fiscal year to outside charities at the discretion of a special Tzedakah committee.

Youth Scholarship Fund

To send Temple Sholom Youth Group members to National Federation of Temple Youth
(NFTY) sponsored events. Scholarships are awarded based on financial need.

Contributions also may be made directly to the **Temple Sholom Brotherhood,
Sisterhood, Hilltoppers or Women's Spirituality.**

TZEDAKAH

Annual Giving Fund

Marc & Stephanie Albero
David & Laurie Albert
Bob & Marcie Berke
William & Jessica Charmont
Steven & Barbara Clarke
Howard & Beverly Cylinder
Norman & Fran Epstein
Daniel & Rebecca Feinberg
Norman & Marlene Feinstein
Jerry Frank & Melissa

Shusterman

Dan Golub & Kimberly Wall
Steven & Beverly Granoff
Ron & Nancy Hays
Scott & Alison Holt-Kalish
Daniel Kraut & Anita Engh
Mark & Lisa Laciaanca
Warren & Arline Lieberman
David & Melissa Lowdermilk
Renee Mack
Jeffrey & Stephanie Montag
Joe & Tracy Lenz-Pessin
Eric Rosenberg & Catherine

Tuite

Adam & Alexis Rosenfeld
Asher & Harriet Rubin
Robert & Jennifer Saionz
Elaine & Debby Samans
Andrew & Rebecca Schwam
Daniel & Michelle Scolnick
Rick & Sue Shandler
Elaine Smith
Harvey Soifer
Bradley & Pam Zilch
In memory of Chava Leah Schlar
Andy & Sharon Alloy
In honor of my late father, Maury
Buxbaum
Laurence Buxbaum
In memory of our dear dog, Oliver
Julian & Irene Gladstone
In honor of the engagement of Jill
Greenfield & Sunil Seelamsetty
Leslie Greenfield
In memory of our parents, Ruth
Jaffe, Bernard Jaffe & William
Pavlik
Henry & Juliann Jaffe

Cantor's Discretionary Fund

In memory of Kay McDonald,
grandmother of Anna Marx, great-
grandmother of Ellie & Isaac Marx
Gary & Jayne Marx
In memory of Max Opstbaum
Roger & Sharon Opstbaum
In memory of Renee Campion
Robert & Marian Slater
In honor of my Bat Mitzvah
Beverly Granoff
In appreciation of Cantor Jamie
Marx on the occasion of Blake
Riesenfeld's Bar Mitzvah
Mark & Valeri Riesenfeld

Cantor Patrice Kaplan Chair for Sacred Music Endowment Fund

In memory of Louis & Dorothy
Lipkin
In memory of Matthew Rike
Steven & Beverly Granoff

In memory of Leah Freeman
Bruce & Mary Vanett
In appreciation of Cantor Jamie
Marx on the occasion of Kaila
Haenn's Bat Mitzvah
Peter & Mindy Haenn & Family

Danowitz Junior Youth Fund

In memory of Lois Schlar
Steven & Donna Hendel

Financial Review

In memory of Anna Seitchick
Edwin & Annilee Seitchick
In memory of Anna Margolis
Marlene & Neal Kahn

General Fund

In honor of the birth of our
granddaughter, Eleanor Louise
Davies
Arthur & Jacqueline Matusow
In memory of Steven Burkett
Adam & Robin Weinstein

Hilltoppers Fund

In memory of Arlene Gold
In memory of Rhoda Flaxman
Loraine Bailie

Hospice and Healing Fund

In memory of Frances Jacobs
Barry & Carol Jacobs
In memory of Larry Grass
Robert & Karen Munin
In memory of Belle Goodman
Alan & Arlene Goodman
In memory of H. Mark Solomon
In memory of Harvey Jacobs
Barry & Carol Jacobs
In memory of Yetta Trachtenberg
Mitchell & Trudy Itzko

Inclusion & Special Needs Fund

In memory of Reuben Nach
Howard & Ilene Brouda
In memory of Muriel Kornspan
Loraine Bailie

Preschool Fund

In memory of Sylvia Eckstein
Michael & Joan Eckstein
In memory of Arlene Querido
Steven & Dana Querido
In memory of Ilene
Cynthia Serano
In memory of Albert Liss
Neil & Judy Schwartz

Rabbi's Discretionary Fund

In appreciation of Rabbi Peter
Rigler on the occasion of Kaila
Haenn's Bat Mitzvah
Peter & Mindy Haenn & Family
In appreciation of Rabbi Peter
Rigler
Ellen Miller
In appreciation of Rabbi Peter
Rigler on the occasion of Blake
Riesenfeld's Bar Mitzvah
Mark & Valeri Riesenfeld



In honor of my Bat Mitzvah
Beverly Granoff
In memory of Lillian Mandel
Kenneth & Susan Mendel
In memory of Josephine Soifer
Harvey Soifer
In memory of Harold Munin
Robert & Karen Munin
In memory of Maurice M. Sharf
Norma Munin
In memory of Isadore Shooster
David & Donna Shooster
In memory of Frederick Shore
Michael & Barbara Pollack
In memory of Joel Dichter
David & Beth Verman
In memory of Ethel Starr
Leonard & Bonnie Starr
In memory of Elaine Schubert
Adam & Lisa Anhalt-Schubert
In memory of Morris Saltz
Judy Saltz
In memory of Frank Borloff
David Cohn & Carol Borloff
In memory of Hyman Blum
Barry Blum
In memory of Renee Campion
Cindy Fastman
In memory of Judith Rowling
Michael & Lori Rowling
In memory of Joan Sherin
Maury & Penny Reiter
In memory of Shirley Pinsk
Allen & Ardeth Pinsk
In memory of Norton & Mary
Kramer
In memory of Nathan & Pauline
Rigler
In memory of Saul Rigler
Raleigh Rigler
In memory of Nathan
Shereshevsky
Adele Persky

In memory of Patricia Kanter
Harvey Soifer
In memory of Jeffrey Clarke
Robert & Marian Slater
In memory of Morris Goldstein
Natalie Silverman

Religious School Education Fund

In memory of Cal Kaufman
Marc & Stephanie Albero
In memory of Albert & Adelaide
Haywood
In memory of Jacob Rittberg
Micah & Wendy Haywood

Sanctuary Book Fund

In memory of Harriet Feinstein
James & Robin Briggs

Scholar-in-Residence Fund

In memory of Jerry Fastman
Cindy Fastman
In memory of Betty Grossman
Evalyn Elias
In memory of Della Slater
Robert & Marian Slater

Temple Beautiful Fund

In honor of the formalizing of
Richard Wagner's Judaism
Evalyn Elias
In memory of Isabel Flitter
Steven & Dana Querido

Tzedakah Fund

In honor of Dina Stonberg's
birthday
Sara, Ross, Marion, Gerald,
Morris & Freyda Kogon

**Please support Temple Sholom
by donating to our various Funds.**

**See page 27 for list of funds
and page 30 for the Contribution form**

Yahrzeits in June ... Z"L

June 1
Israel Chalupowicz
father of Diana Gherovici
Nettie Greenberger
grandmother of Elyse Endy
Albert Haywood
father of Micah Haywood
Patrick Noonan
friend of Ronald & Nancy Hays
Kelly Powley
twin sister of Tammy Stone
Louis Schechter
Roberta Finder Schiff
Aunt of Roni Robinson
Hannah Schiff
grandmother of Andrew Shanefield
James Singleton
grandfather of Elizabeth Shanefield
June 2
Leah Freeman
grandmother of Bruce Vanett
Betty Grossman
mother of Evalyn Elias
Ida Sorkin
grandmother of Eric Thomas
June 3
Robert Botel
Natalie Giltitz
aunt of Laurie Albert
Morris Goldstein
father of Natalie Silverman
Reba Goss
mother of Cynthia Fastman
Adelaide Haywood
mother of Micah Haywood
Stanley London
grandfather of Amy Pasnak
June 4
Etienne (Steven) Guy Robinson
brother of Anthony Robinson
Ruth Halpert
great-aunt of Nancy Hays
David Knoblock
June 5
Harold Bilsky
father of Steven Bilsky
Samuel Braverman
father of Marjorie Berke
David Klein
father of Susan Dorfman
Mae Marlowe
grandmother of Alyssa Deitz
Mae Marlowe
mother of Diane Sheinen
Edith Grant Stein
aunt of Barbara Smilk
Sy Tarshis
uncle of Melissa Lowdermilk
June 6
Ilse Godfry
Sharon I. Kunitz
friend of Alissa Goodkin
June 7
Arlene Borson
mother of Andrew Borson
Harvey Jacobs
brother of Barry Jacobs
Leah Kleger
Yolonda Sussman
sister of Cynthia Meyer
David Veloric
Laura Wildman

June 8
Lou Dunetz
father-in-law of Shirley Chalick
Lena Herr
Jerome Justan
father of Sandra Barth
Patricia Kanter
mother of Rachel Cahill
wife of Harvey Soifer
Mary M. Novick
mother of Anita Kaufman
Nathan Sheinen
father of Ken Sheinen
Scott Toren
brother of Jeffrey Toren
June 9
Maurice Byck
grandfather of Margaret Husick
Ethel Sassler
wife of Norman Sassler
June 10
Herbert Max Gladstone
father of Julian Gladstone
Elaine Hyman
mother of Rebecca Krangel
Irving Mark
father of Jerald Mark
Meyer Pearlman
Edward Samans
husband of Elaine Samans
father of Deborah Samans
Yetta Schneider
grandmother of Susan Thomas
Martin Schulman
father of Penny Toren
Ethel Vill
grandmother of Jeffrey
Springer
June 11
Elsie Dennis
aunt of Barry Jacobs
Samuel Rubin
father of Asher Rubin
June 12
Seymour (Sy) Bassman
father of Robin Sylvis
Sadie Feldman
great-aunt of Laurie Albert
Jorge Kapelusznik
father of Luciano Kapelusznik
Doris Rosen
grandmother of Beth Cope
Bernarr J. Sharf
brother of Norma Munin
Betty Stern
grandmother of Emily Moody
Henry Tintner
father of Eleanor Segal
June 14
Henry Bangser
father of Cary Scottoline
Harry Barnes
grandfather of Michael Kane
John Frederick Barr
father of John Barr
Charles Goldman
Margaret Grossman
sister-in-law of Evalyn Elias
Ethel Hartman
grandmother of Nancy Hays
Lester Moss
father of Alisa Clyne
Frances Sagan
mother of William Sagan

Irene Stern
grandmother of Howard Verbofsky
June 15
Karyn Appel
niece of Arthur Zabell
Roslyn Appel
aunt of Carol Borloff
Rose Berger
grandmother of Gerri Sassler
Gertrude Foxman
aunt of Arthur Rabin
Rose Greenfield
aunt of Laurie Albert
Lawrence Lazarus
father of Michelle Wilson
Lillian Margulies
Elsie Poch
mother-in-law of Honore Poch
Esther Kaplan Trachtenberg
June 16
William Bleiman
grandfather of Jeffrey Bleiman
Barbara Grass
mother of Karen Munin
Sara Apparisi Prusack
mother of Rosanne Perry
Pauline Richter
aunt of Susan Dorfman
Arnold Segal
husband of Eleanor Segal
Harry Yankeloff
father of Elaine Samans
grandfather of Debby Samans
June 17
Abby Haftel
friend of Elyse Endy
friend of Lorraine Bailie
Israel Litwin
father of Daniel Litwin
Estelle Opstbaum
mother of Roger Opstbaum
Jane Silver
June 18
Carolyn Goldberg
sister of Edwin Seitchick
Dorothy Goldman
mother of Charles Goldman
Richard Silver
June 19
Emanuel M. Gilbert
father of Laurie Albert
Rose Heisen Levy
mother of Shirley Plotkin
Clarissa Louis
mother of Arlene Goodman
Harry Rubin
father-in-law of Carol Rubin
Sidney Tarrington
Theodore Wunsch
father of Elliot Wunsch
June 20
Nathan Foxman
uncle of Arthur Rabin
Sidney Hersh
uncle of Eileen Wolfson
Samuel Kahn
father of Neal Kahn
Irvin Sherr
Jerome Morton Sork
father of Lisa Rosenfeldt
June 21
Larry Alan Beifield
brother of Carole Landis

Evelyn Buckwalter
mother of David Buckwalter
Max Foxman
uncle of Arthur Rabin
Tilly Granoff
mother of Steven Granoff
Marcia Sue Kaspin
sister of Barbara Goldstein
William Rapport
Sylvia Regar
mother-in-law of Dan Haas
June 22
Carol H. Axelrod
mother of Michelle Scolnick
Nelson A. Boutilier
father of Janice Barnett
David Lowdermilk, Sr.
father of David Lowdermilk
June 23
Anna Epstein
mother of Norman Epstein
Matt Jacobson
son of Steven & Ilene Berger
Sarah Levin
mother of Larry Levin
Leo Reisher
uncle of Ken Lester
June 24
Jane Fink
mother of Barbara Sagan
Abraham Goodkin
father of Michael Goodkin
grandfather of Alissa Goodkin
Ida Kramer
grandmother of Mark Kramer
Theodore Stone
father of Deborah Stone
June 25
Bernard Grant
uncle of Barbara Smilk

Sarah Emily Uhl
daughter of Deborah Uhl
Malcolm Zlotkin
father of Sloane Zlotkin
June 26
Marilyn Rogat Cohen
mother of Jodie Gold
Herbert Heiman
uncle of Michael Goodkin
great-uncle of Alissa Goodkin
June 27
Anthony Adams
father of Christopher Adams
Meyer Kaufman
father of Richard Kaufman
Elizabeth Kosich
grandmother of Michelle Kosich
Emanuel Weiner
June 28
Edna Freedman
mother of Reina Robbins
Dorothy Robin
sister-in-law of Betty Graboyes
Miriam Rodgers
aunt of Ellen Lipschutz
June 29
Jerry Lichtman
Muncie Schultzberg
Albert Seltzer
father of Harriet Bleiman
June 30
Aaron Hollander
father of Allene Golub
Charles Mittman
Ella Scottoline
mother of Gary Scottoline
Elsie Sewitch
mother of Arline Lieberman
Stanley Shapiro
husband of Ellen Shapiro

RECENT DEATHS

Sylvia Rabin,
wife of Arthur Rabin

Renee Campion,
friend of Temple Sholom

Jeffrey Clarke,
brother of Steven Clarke

Loretta Margulies,
friend of Len & Bonnie Starr

Edith Josephine Patey,
cousin of David Leavitt

Jan Silcox,
friend of Bucky & Eileen Buckwalter

joel perlish photography

"anything you can picture"

joel perlish

owner havertown, pa

• mitzvahs • weddings • portraits

→ vhs & slide transfers to dvd ←

call: 610-789-POSE (7673)

email: joelperlish@aol.com

gallery: joelperlish.smugmug.com

web: joelperlish.com



Join Us for an Evening of Fun Featuring Beatles Tribute Band, *The Beat Tells*
Thursday, June 8 • 6:30 pm

Fabulous Food, Microbrews, Fine Wines, Silent Auction,
Delectable Desserts and a 50/50 Charity Drawing

All proceeds benefit the WEL Main Line Resident Assistance Fund

Please reserve your seat (s) at \$100 per ticket
Call Amy at 610-353-7660 x254 for more info

WESLEY ENHANCED LIVINGSM
Main Line
(formerly Martins Run)

100 Halcyon Dr • Media, PA 19063
www.WEL.org • 877-U-AGE-WEL

Wesley Enhanced Living (WEL) continuing care retirement communities are non-profit, with a mission to deliver a purposeful-filled life to residents



**Cantor Marx's Music Available NOW
on itunes and Amazon Music!**

SHOP SHOLOM SUPERMARKET & GIFT CARDS / AMAZON



Families! Try Gift Cards online ordering system.
Please use the following code when registering for

ShopWithScrip.com

Code: 983DL9A317L72

Gift cards can also be ordered now through the School
Office or during Sunday Religious School hours in the
lobby or the easiest and BEST WAY:

Become a regular monthly subscriber!

Contact Marissa in the Temple Office at 610-356-5165 or
community@temple-sholom.org

HERE IS HOW TO FIND OUR LIVE WEBCAST ...

Go to our website:

www.temple-sholom.org

Click on **"Live Webcast"**

It's on the home page.

It's that simple!

**Not all services will be webcast.*

THE GIFT GARDEN

CHECK THE DOOR FOR
SCHEDULE OF HOURS

PLEASE CONTACT LINDA PHILLIPS AT
610-644-7904

CONTRIBUTION FORM

I wish to make a donation to the _____ Fund in the amount of \$ _____

The contribution is in (check one): _____ memory _____ honor _____ appreciation of: _____

The card should read: _____

This gift of tzedakah is from: _____

Address: _____

Area/Phone: _____

Please send this form with your check made payable to:
TEMPLE SHOLOM, 55 North Church Lane, Broomall, PA 19008

THE SHABBAT SUITE

AT LANKENAU MEDICAL CENTER

PROVIDING COMFORT

When you or a loved one needs the care or services of a hospital, it's comforting to know that a premier medical center in your region offers a peaceful space for families to observe Shabbat and holidays.

At Lankenau Medical Center, our specialized medical and surgical teams are skilled in providing advanced care. We also understand the importance of helping patients and families through their physical, emotional, and spiritual journey.

Our comfortable and convenient Shabbat Suite features:

- Two private bedrooms, each with two beds and a private bathroom with shower*
- 24/7 private kitchen and stocked pantry
- Spacious lounge and private space for minyan

**At Lankenau, providing compassionate care has been
a tradition for more than 150 years.**

To learn more about Shabbat services or to visit the Shabbat Suite at Lankenau Medical Center, call 484.476.2020 or visit mainlinehealth.org/shabbat. We look forward to helping ensure a comfortable Shabbat environment.

100 East Lancaster Avenue
Wynnewood, PA 19096



Lankenau Medical Center
Main Line Health

*Sleeping facilities available only during Shabbat and holidays.

SUMMER 2017

CAMP MENSCHY AT TEMPLE SHOLOM IN BROOMALL



Camp Dates
June 26-August 4
Enroll Now!
Register by March 31
and save \$50

Payment due in full by 5/15

**Sign Up Today for a Summer of
Sun and Fun!**

- ☒ **Flexible weekly options!**
- ☒ **Amazing Preschool Staff!**
- ☒ **Activities like gardening, water play, music, sports and more!**












TEMPLE SHOLOM PRESCHOOL

55 North Church Lane, Broomall, PA 19008

For More Information Contact Brooke Zeitz,
Early Childhood Education Director @ 610.886.2065
preschool@temple-sholom.org



June 2017 Sivan/Tamuz 5777

Sun	Mon	Tue	Wed	Thu	Fri	Sat
10 Sivan 11 AM Preschool Family Fun Fair 3:30 PM Interfaith Family BBQ	4 11 Sivan <i>Annual Congregational Meeting June 19</i> 5 PM Adult B'nei Mitzvah Class 7 PM Scholar In Residence Committee Meeting	5 12 Sivan 5:30 PM B'nei Mitzvah Class 7:30 PM Delaware Valley Jewish Choral Festival 	6 13 Sivan Preschool Move-Up Day 4 PM B'nei Mitzvah Class 7:30 PM Executive Board Meeting	7 14 Sivan 10:30 AM Hilltoppers Board Meeting 	8 Sivan 8:30 AM Preschool Donuts with Dad 5:30 PM Shabbat Walk in the Park 6 PM BBQ in the Park 7 PM Shabbat in the Park	9 Sivan 10:30 AM B'nei Mitzvah: Seneca & Michael Farhy 6 PM ToaSTY Shul-In <i>Torah Portion: Naso</i> 
17 Sivan	11 18 Sivan Camp Menschy Precamp Begins 5 PM Adult B'nei Mitzvah Hebrew Class	12 19 Sivan Mitzvah Meals 5:30 PM B'nei Mitzvah Class 7:30 PM Choir Rehearsal	13 20 Sivan 10:30 AM Tanakh Class 4 PM B'nei Mitzvah Class 7:30 PM Women's Spirituality	14 21 Sivan	15 22 Sivan 8 PM Shabbat Service 	16 23 Sivan 10:30 AM B'nei Mitzvah: Shana Deitz & Jolie Jaffe <i>Torah Portion: Sh'lach L'cha</i> 
24 Sivan <i>Father's Day</i>	18 25 Sivan 5 PM Adult B'nei Mitzvah Class 7:30 PM Annual Congregational Meeting	19 26 Sivan 5:30 PM B'nei Mitzvah Class 7:30 PM Choir Rehearsal	20 27 Sivan 4 PM B'nei Mitzvah Class <i>Summer Begins</i>	21 28 Sivan	22 29 Sivan 8 PM Shabbat Service 	23 30 Sivan 10:30 AM B'nei Mitzvah: William Rubin & Ty Gould <i>Rosh Hodesh</i> <i>Torah Portion: Korach</i> 
1 Tamuz	25 2 Tamuz Camp Menschy First Day 	26 3 Tamuz 5:30 PM B'nei Mitzvah Class 7:30 PM Choir Rehearsal	27 4 Tamuz 2 PM American Red Cross Blood Drive 	28 5 Tamuz Camp Menschy Picture Day	29 6 Tamuz 8 PM Shabbat Service	30

Celebrating Our



The Temple Tidings

Deadlines

July/August

~ deadline June 5 ~

September/October

~ deadline August 5 ~

November/December

~ deadline October 5 ~

January/February

~ deadline December 5 ~

March/April

~ deadline February 5 ~

May/June

~ deadline April 5 ~



Temple Sholom in Broomall

55 North Church Lane, Broomall, PA 19008

www.temple-sholom.org

610-356-5165 Phone

610-356-6713 Fax

610-886-2065 Preschool

Rabbi Peter C. Rigler

Cantor Jamie Marx

Rabbi Emeritus Mayer Selekman

Cantor Emerita Patrice Kaplan



UNION FOR **MEMBER**
REFORM JUDAISM

האיחוד ליהדות רפורמית

SERVING REFORM CONGREGATIONS IN NORTH AMERICA