



Temple Sholom
in Broomall
SEPTEMBER 2014
ELUL/TISHREI 5774/5775

The Temple Tidings



Prospective Member Open House

September 5 at 8 pm
and
September 12 at 7 pm*

***5 PM** Pre-Oneg with Cantor Marx
5:30 PM Tot Shabbat
6 PM Potluck Dinner
7 PM Family Shabbat Service
(please note new times)

*Our doors are open to all who wish to
experience Shabbat in our
warm, inclusive and welcoming community!*

Please invite friends and family who are interested in becoming part of the Temple Sholom family to join us as we usher in the Sabbath together!

Rabbi Rigler, Cantor Marx and our entire congregation are looking forward to meeting potential new congregants and welcoming them to our community!



שנה טובה



WHAT'S INSIDE

- | | |
|------------------------------|-------------------------------------|
| 2 Rabbi's Message | Parent & Me Program |
| S'lichot | 16 Intro to Judaism |
| 3 Cantor's Notes | Hebrew II |
| Welcome! | Adult B'nai Mitzvah |
| 4 Director's Corner | 17 Mitzvah Meals |
| Holiday Food Drive | Discussion Group |
| Community Coordinator | 18 <i>Rimon & Gesherim</i> News |
| 5 President's Greetings | 19 Stop Hunger Now |
| Gardeners Needed | 20 Welcome Back Brunch |
| 6 Celebrating the High | 21 Congregation Sukkot |
| Holy Days | Dinner |
| 7 Oneg Sponsors | 22 Family Management |
| Fall Bereavement Class | Sukkot Dinner |
| 8 High Holy Day Schedule | 23 Women's Spirituality |
| 9 Mazel Tov! | Retreat Info |
| Library Honors | 24 Meditation Opportunities |
| Bev Granoff | College Student Gifts |
| Cantor Marx Installation | 25 Happiness & Memorial |
| 10 Inclusion & Special Needs | Cards |
| Update | Tanakh Study |
| Conversations with Men | 26 JNF Trees and Water |
| 11 Sisterhood | CASA Volunteers |
| Welcome Dinner | DMAX Events |
| 12 The Hilltoppers | 27 Temple Staff and Board |
| Brotherhood | Scrip Program |
| 13 Sisterhood Book Club | 28 Contribution Form |
| Mitzvah Core | 29 Tzedakah |
| Havdallah in the Home | 30 Ongoing Collections |
| Honor Flight Philadelphia | Temple Funds |
| 14 September B'nai Mitzvah | 31 September Yahrzeits |
| ToaSTY | Recent Deaths |
| 15 The Preschool | 34 August Calendar |

FROM THE DESK OF RABBI PETER RIGLER



Dear Friends –

Tick Tick Tick The countdown has begun!

According to the Jewish calendar, the last month of the Jewish year began just a few days ago. The Hebrew month of *Elul* has arrived, which means the “countdown” to the New Year is upon us. Soon we will be sharing Rosh Hashanah and entering a new year. This is a time of opportunity. Judaism doesn’t want you to wait until you are sitting in the service ... start to prepare yourself now!

We look back on the last year and look forward to the coming year. We consider what we have done with the last year and, according to tradition, we resolve to do better and to be better. I can barely remember what I did yesterday, but we try to look back over the year.

Something occurs to me, however.

My first task is to look back over this year...5774...

Where were you this past year?
What did you read?
What movies did you watch?
What people did you meet?
What trips did you take?
What made you proud?
What made you laugh?
What made you cry?
What frightened you?
What hurt you?
What did you accomplish?
What do you wish you had accomplished?

These are *ELUL* QUESTIONS, and you’ve got a month to find your answers.

I once heard a story from Rabbi Sholom Rivkin, who told that in the old days, if you wanted to go talk to the king, you had to think about who could help you get invited to the palace. You had to wear your best clothes and learn the court etiquette - how to enter the throne room, when to bow, what to say, where to look. It was all very complicated and very serious. But sometimes, the king just went for a walk in the fields. And at those times, you could just start walking along next to the king and share whatever was on your heart. This is the time of year when the King goes walking in the fields.

I love this imagery, the intimacy, the hope it conveys for coming close to the Divine. I feel my heart leap up: Yes! I too want to go for a walk with the King! (Or the Queen - pick your metaphor of royalty.) I also love this story because the High Holy Days themselves, as we know, are like the throne room, not like the open fields. They are formal, complicated and the most serious days of our whole year. We could get seduced into thinking that the preparation for these Days of Awe is mostly involved with liturgy and choreography. But this is precisely when God invites greater accessibility of a very different kind.

And so part of my preparation for the Holy Days includes imagining:

What would it be like if I could join God for that walk in the fields?

From my family to yours, we wish you an inspiring beginning to these most holy of days!

~ Rabbi Rigler
rabbi@temple-sholom.org

S’LICHOT: WHO SHALL LIVE AND WHO SHALL DIE?



Who Shall Live and Who Shall Die: Struggling with God on the High Holy Days

For some, *Unetanah Tokef* is beloved. It rivals Shakespeare in its description of the human condition: “Man’s origin is dust and dust is his end. Each of us is a shattered urn, grass that must wither, a flower that will fade, a shadow moving on, a cloud passing by, a particle of dust floating on the wind, a dream soon forgotten.” For others, this prayer is dreaded: “on Rosh Hashanah it is written, on Yom Kippur it is sealed, how many shall pass on, how many shall come to be; who shall live and who shall die; who shall see ripe age and who shall not....”

What are we to make of *Unetanah Tokef*? How do we understand and feel about liturgy that envisions the High Holy Days as an annual season of divine judgment.

Join Cantor Marx and Rabbi Rigler on [Erev S’lichot, 7:30 pm on September 20st](#), for a discussion of the complex and compelling ideas that shape our High Holy Day Prayers.

The discussion will be followed by a [9:30 pm S’lichot Service](#).

NOTES FROM CANTOR JAMIE MARX



Singing the Day of Judgment

[Note: The links below will take you to MP3 examples of the melodies referred to in the article. If you would like the MP3s emailed to you, please email Sandy Cohen at skcohen@temple-sholom.org-- JM]

There is power in the music of the High Holy Days. At a time when we try to examine our lives and come to terms with all that's happened in the year that has just ended, the music heard in the synagogue can help serve that goal. Some of the "traditional" melodies for the High Holy Days are in fact fairly recent additions to our cultural repertoire, while others stretch back as far as records exist. In either case, the music is meant to evoke strong emotions and guide, assist, and carry us through this emotionally fraught season.

The majesty of the traditional Rosh Hashanah melody (<http://bit.ly/Xn0CDg>) evokes God's greatness and the grandeur of the holy days. It reminds me of a stately procession or a declaration from a medieval herald. Though this theme is widely associated with the Days of Awe as a whole, it is customary only in the evening services. At Temple Sholom, we use it for a number of texts: the candle blessing, *Shehecheyanu*, *Mi Chamocha*, and *Bar'chu*, among others. As the most well-known of High Holy Day themes (other than perhaps *Kol Nidre*), it is also used as a "signal" in Shabbat services leading up to Rosh Hashanah, a musical reminder of the upcoming holiday.

Avinu Malkeinu is considered such a potent prayer that during times of war the ultra-Orthodox community will gather at the Western Wall and recite it for hours. The Talmud teaches that the great Rabbi Akiva recited *Avinu Malkeinu* and brought an end to a drought. Today, we associate this prayer solely with the High Holy Days and generally with two melodies: a famous 20th Century composition by renowned composer Max Janowski (<http://bit.ly/1kH0KYk>) and a widely-sung folk tune (<http://bit.ly/1oOJLhZ>) that is older - though we don't know how much older. For me, both of these melodies evoke a sense of longing, of striving to improve and the awareness that perfection doesn't exist for mortals.

And of course no High Holy Day melodic catalogue would be complete without *Kol Nidre* (<http://bit.ly/1m1TmSx>). Though generations upon generations have struggled with the text of *Kol Nidre*, the melody has always been the overriding argument for keeping the text in our prayer book. Even when medieval and Enlightenment-era rabbis banned the text (we'll have to save that for another bulletin article), the congregation demanded this melody be continued and cantors obliged. One of *Kol Nidre*'s great gifts is that it is not a full composition but rather a series of

themes, allowing each person who recites *Kol Nidre* to create the melody for themselves. He or she can bring themselves fully to the moment and convey the power of all the Days of Awe in that one prayer.

Though the music may not be familiar to everyone, it is my hope that it is moving nonetheless. And when we enter into the High Holy Days, may the music reach into your soul and help make this a meaningful and powerful New Year.

~ Cantor Marx

cantor@temple-sholom.org



We welcome our Newest Members:

~ The Drajpuch / Robinson Family ~
David, Sarah and Isaac

~ The Grant Family ~
Adam, Allison, Joanna, Elena and Henry

~ The Langer Family ~
Sagy, Dori, Shay Shalev and Danielle

~ The Moua Family ~
Chong, Michelle, Zoey and Zach

~ The Polsky Family ~
Alan, Barbara, Candice and Natalie

~ The Resnick Family ~
Emily (Shannon Farmer's sister)

Welcome Back:

~ The Golub / Wall Family ~
Dan, Kim, Isaac and Alden

~ The Nachman Family ~
Brad, Laura, Macy & Fletcher

~ The Smith Family ~
Scott, Samantha, Skylar and Savannah

~ The Kamis / Wasserman Family ~
Robert & Diane



DIRECTOR'S CORNER

Friends,

As we get ready to welcome in the New Year, I take some time to reflect on the past year. Our Temple Sholom community is so full of life and activity. We all lend a helping hand to make certain our community accomplishes our goals. We have so many wonderful volunteers, and I thank all of you for being a special part of our Temple. Whether you volunteer and/or participate in Temple Sholom life daily, weekly, monthly or even once yearly, we appreciate your time, your energy and your presence. Thank you for helping to make our Temple a real community.

This year, again, the safety and security of all during the High Holy Days (and every day) is important to us. Please cooperate with us as we ask you to show your tickets during the High Holy Days. You will receive your tickets in the mail in mid-September; we ask that you bring them with you to all Holiday services, and that you show them to our ushers as you enter. Together, with your help, we will continue to be warm and welcoming while also focusing on the importance of everyone's safety and security. Thank you in advance for your understanding and cooperation. If you have any questions or feedback, please contact me.

I look forward to seeing you during the year at Temple. Please call, email or stop in for a visit at any time!

Together we continue to create our warm, vibrant and inclusive community.

Wishing you a Sweet New Year!

~ Warmly, Abbey Krain
director@temple-sholom.org

HIGH HOLY DAY FOOD DRIVE

ToaSTY, Temple Sholom's youth group, will be hosting the High Holy Day food drive once again this fall.



Donations will be accepted from **September 23 up to 1:30 pm on October 4** and can be dropped off in the Lobby. We appreciate your support!

Needed most:

Creamy peanut butter, stable tuna, beef stew, chili, jelly, canned pasta, breakfast cereal (cold and hot), macaroni & cheese, and canned fruit cocktail

COMMUNITY COORDINATOR



September is a very busy month at Temple Sholom as we embrace the New Year. Please read this issue of *The Temple Tidings* carefully as it is full of upcoming services, programs, "Save the Date" announcements and ways you can get involved in our vibrant community.

Special Shabbat Services abound this month, starting with our Prospective Member Shabbats on **September 5th** and **September 12th**, followed by a wonderfully diverse array of S'lichot programming on **September 20th**. Erev Rosh Hashanah is **September 24th** and Kol Nidre is **October 3rd** (see page 8 for the detailed High Holy Days schedule).

On **October 5th**, we prepare to welcome Sukkot with the Brotherhood, as the team builds our outdoor and *bimah* sukkahs. Rabbi Rigler and Cantor Marx will lead study session and dinner in the Sukkah on **October 8th** (see page 21). The evening of **October 12th** we are cooking for our friends from the Family Management Center as they share a meal with us at Temple Sholom (page 22). Over the next couple of weeks, we will be asking for your help. Many volunteers and requests for specific donations will be needed to make this a special mitzvah for all.

On Wednesday, **October 15th** we will unroll the Torah in honor of Simchat Torah as we consecrate the new Religious School students.

For those looking to learn more about Judaism we have two very special opportunities. Join us for an 11-week ***Introduction to Judaism*** course taught by Rabbi Beth Janus. Rabbi Janus will also be teaching an 11-week class entitled: ***Hebrew II: Hebrew For Meaning***. See page 16 for details on how to sign up for these classes.

Rabbi Rigler will continue to have a weekly Wednesday *Tanakh* study group. For those seeking more insight, we recommend you check out Women's Spirituality, Jewish Meditation, and Conversations with Men.

I am so proud of our Temple, its Board, volunteers, members and staff and how as a team we are able to create and provide such an enriching community for all.

~ B'shalom, Sandy Cohen
skcohen@temple-sholom.org

HOLIDAY GREETINGS FROM EMILY MENDELL, TEMPLE PRESIDENT

On July 1, I officially assumed the role of President of Temple Sholom. The same day Noah, my 16 year old son, along with approximately 60 other teens participating in the National Federation of Temple Youth's (NFTY) Israel trip, entered the Negev desert as part of their five week journey of a lifetime. At the time, neither I nor Noah had any idea what might lie ahead. My sense of uncertainty around the first few days at the helm of our synagogue was greater than any concern I had for Noah and his peers. I had Board meetings to plan, issues to understand, and connections to be made. With Noah in Israel, there was one less kid around the house to worry about and I was glad for the extra time to get up to speed on my new job.

That all changed very quickly.

Within days, the unrest in Israel began to heat up, and over the course of the ensuing weeks, it boiled over. During Noah's time there, thousands of rockets were launched into the country with the intent to kill civilians of which my child was now one. Little did I know it at the time, but Noah's journey of a lifetime was poised to become one of my greatest life lessons about what it means to be Jewish and why our Temple community is so incredibly important. It was a month of learning that no leadership role could ever match.

July was a roller coaster of emotion for me. At times, I felt brave and confident that Noah would be fine, that NFTY had his safety and security completely under control, and that this was indeed an incredible experience for my son to truly understand what Israel experiences as a country dealing with terrorists on a daily basis. Then, the ground would fall out from under me, and I would be near panicked that something would go horribly wrong and he would become a victim of the war. (It's amazing the horrific scenarios a Jewish mother can pull up in her head when under duress.) Reflecting back now, I feel incredibly proud of how I kept it together (mostly) for Noah – and generally for others around me. I have Temple Sholom to thank for this.

As the war escalated in Israel, the warmth radiated at our synagogue. We welcomed Cantor Marx and his family with a fantastic barbeque and service that made my heart grow 10 sizes. Congregants of all ages came together to eat, sing and pray in a celebration of what promises to be a bright future of music and spirituality for all of us. We held our first Board meeting of the fiscal year where each member offered ways in which they were committed to contributing to the vibrancy of Temple Sholom. We celebrated Mike Danowitz's presidency, toasting him at a lovely dinner and honoring him for his amazing work and overall "menschy-ness". All along

there were prayers and thoughts offered to our family for Noah's safe return, which made us feel supported and loved. This is what a congregation should be.

However, no one was more helpful to me than Rabbi Rigler. From the beginning of trouble, I was in regular touch with Rabbi, reaching him up at Camp Harlam, in his car, and at his home for guidance. His knowledge of Israel, NFTY, and politics – and more importantly of our family – was invaluable. He was reassuring while practical, empathetic, and accessible – all traits I desperately needed at that point in time. This is what a Rabbi should be.

On July 27, Noah and his group touched down at JFK International Airport. There were tears (mine) and smiles (Noah's) and endless chatter about his trip and what it meant to him. I have no doubt this journey changed him for the better, offered us all a unique perspective on the immense challenges faced by Israel, and fortified our support for the Holy Land and its people.

Upon arriving home from the airport, there was a message on our voicemail from a congregant who I know only through some brief pleasantries we have exchanged at services. She had heard that Noah was home and wanted to express her thankfulness for his return. My heart ran over. This is my congregation. These are my people. And it is an honor and privilege to serve as Temple Sholom President.

As we look forward to the High Holy Days, there is much for which to be thankful and much upon which to reflect. My journey is but one. I hope to worship with all of you during the Days of Awe, pray for peace, and celebrate our Temple Sholom community together.

Shana Tova.

~ Emily Mendell, Temple President

ATTENTION GARDENERS

***HELP US READY THE TEMPLE GROUNDS
FOR THE HIGH HOLY DAYS.***

BRING YOUR GLOVES AND TOOLS ON

***SUNDAY, SEPTEMBER 14
FROM 1:00 - 3:00 PM***



CELEBRATING THE HIGH HOLY DAYS AT TEMPLE SHOLOM

Dear Temple Members:

Erev Rosh Hashanah begins on Wednesday, [September 24](#). In keeping with the recommendations of the Religious Practices Committee, the Board has developed the following Temple Policies regarding the High Holy Days. Please keep in mind that the High Holy Days are a time when most of our members attend services, and our space is limited. Further, they are a quiet and reflective time.

High Holy Days Policies and Procedures

To assist all congregants with questions or concerns, Ushers will be stationed throughout the Sanctuary, lobby and parking lot.

All congregants must bring your personalized, nontransferable tickets to each service. Your ticket is required for entrance. Tot Services on Rosh Hashanah and Yom Kippur, as well as the evening service on Rosh Hashanah do not require a ticket.

Our Temple building, as well as the doors to the Sanctuary will open one hour before the service begins. This allows us to prepare for your arrival.

You may hold seats for your immediate family only.

Once Services have begun, entry into the Sanctuary will be at the discretion of the ushers. It is our policy that no one is to be admitted while the congregation is standing, when the Ark is open or during the Rabbi's sermon or Cantor's Sermon Anthem.

If you bring cell phones, beepers and other electronic devices into the building, please make certain they are set to "inaudible."

Tickets for High Holy Day Services will be issued to members in good standing only.

A limited number of guest tickets are available to purchase for relatives who live outside of our service area. The fee for guest tickets is \$200 each. Please contact the Temple Office to purchase guest tickets.

According to Temple policy, children of member families, 25 years and older, are independent adults. If adult children live outside of our service area, a guest ticket may be purchased for them. Children who are 24 years or younger may attend services as part of the family unit and will receive a ticket in the mail.

It is recommended that children under 12 years of age attend Family Services, which are held for those families with children younger than 12 years old and who wish to come as a family. So that the Family Services may be fulfilling for everyone, we ask that parents be responsible for the behavior of their children. It is recommended that Adult Services are for those congregants 12 years and older.

Babysitting is available during Adult services on Rosh Hashanah morning and on Yom Kippur morning. Registration is required in advance. Contact the Temple Office regarding the fee and to sign up.

Family and Tot Services

We invite all families with toddlers and preschool children to attend a special service in the Sanctuary on Rosh Hashanah and Yom Kippur. In order to allow us to set up for Adult Services, we will ask all to leave the Sanctuary when Tot Services are finished.

Parking on the Temple Grounds

Parking spaces are limited and are available on a first-come, first-served basis. When our property is full, you will be allowed to drop off your passengers at the door and then park in the Little League parking lot at the corner of Church Lane and Marple Road. Cars illegally parked in the neighborhood will be ticketed. All others may park in the large lot in the back. There will be no parking on the grass or on any blacktop that is not striped. When parking on the street, please be sure not to block our neighbors' driveways. The Marple Township Police will patrol, assist and help direct traffic.



Parking for People with Physical Disabilities

The smaller parking lot at the front of the Temple, spaces along the side and in front of the Annex will be reserved for physical disability and emergency parking. Spaces are limited. To request Disabled Parking, you must be a driver with physical disabilities and have a Person with Disabilities License Plate on the car that you will be driving to High Holy Days. Parking reservations will be honored up to 30 minutes before the start of services. After that time, the parking space will be released to other congregants. We appreciate your respect of our parking lot ushers and hope you arrive on time.



Wheelchair/Limited Mobility/Special Needs Seating

Requests for special seating will be accepted on a first-come, first-serve basis. These special seats will be honored up to 30 minutes before the start of services. After that time, the seats will be released to other congregants. Please be respectful of our ushers and arrive on time.

We will not be able to accept dues payments at High Holy Day Services. Please make all arrangements with Abbey Krain, Executive Director, at 610-356-5165, ext. 103 or Betsy Blackburn-Goslin, Temple Bookkeeper, at 610-356-5165, ext. 111 prior to September 4th.

All area College Students are welcome to join us for all services. Please call the Office to register their name(s). College or university ID are required.

Best wishes for a happy, healthy and sweet new year.

~ The Clergy and Staff of Temple Sholom



SEPTEMBER ONEG SPONSORS

September 12

Melissa Shusterman and Jerry Family in honor of their son Ezra's Bar Mitzvah

September 26

Andrew and Marlene Lukens in honor of their daughter Kasey's Bat Mitzvah

Thank you to the following for sponsoring Onegs over the summer:

August 15

The Danowitz Family in honor of the Incoming Temple Sholom Board

CELEBRATING A SIMCHA? SHARE IT WITH AN ONEG!

Honor your loved ones and the Temple by sponsoring an Oneg and sharing your special day with us. A birthday, anniversary, baby naming, or marriage blessing are all perfect occasions. Please contact the Temple office at 610-356-5165 or info@temple-sholom.org for details.

FALL BEREAVEMENT CLASSES

Once again we are considering a fall bereavement group beginning in September, and scheduled to meet for 8 to 9 weeks; the dates are still to be determined.

This program is for newly bereaved people whose loss has been in the past 9-18 months. The cost is \$20, which includes the class handbook.

Our feedback from previous classes has been very positive.

If you are interested in joining these classes, please contact Rabbi Rigler at the Temple office 610-356-5165 or Barbara Smilk at 610-353-0840.

We look forward to hearing from you. Confidentiality is respected.



HIGH HOLY DAYS SCHEDULE 2014/5775

Please join us for all services in our sanctuary

S'lichot

Saturday, September 20

- 7:30 PM Rabbi Rigler and Cantor Marx: Who Shall Live and Who Shall Die:
Struggling with God on the High Holy Days
- 9:30 PM S'lichot Service

Rosh Hashanah

Wednesday, September 24

- 8:00 PM Erev Rosh Hashanah – Adult Service (no ticket required)

Thursday, September 25

- 9:00 AM* Tot Service: toddlers, preschoolers and their parents
(no ticket required for Tot Service)
- 10:30 AM Adult Service (doors open at 10:00 AM)
- 1:30 PM Family Service: [geared to Rimmon students \(grades 1-6\) and their parents](#)
- 3:00 PM Tashlich – New Ardmore Park (weather permitting)

Shabbat Shuvah

Friday, September 26

- 8:00 PM Shabbat Shuvah: Turning and returning to our best selves.

Yom Kippur

Friday, October 3

- 8:00 PM Kol Nidre – Adult Service

Saturday, October 4

- 9:00 AM* Tot Service: toddlers, preschoolers and their parents
(no ticket required for Tot Service)
- 10:30 AM Adult Service (doors open at 10:00 AM)
- 1:30 PM Family Service: [geared to Rimmon students \(grades 1-6\) and their parents](#)
- 3:00 - 4:00 PM Discussion led by Rabbi Rigler and Rabbi Selekman
- 4:00 - 5:00 PM Wister Quartet Chamber Concert: Music & Meditation
- 5:00 PM Yizkor and Concluding Service
Break-the-fast following services

Sukkot

Wednesday, October 8

- 7:00 PM Sukkot Program in the Sukkah with Rabbi Rigler

Friday, October 10

- 7:00 PM Shabbat Services and Consecration followed by an Oneg in the Sukkah

Sunday, October 12

- 5:30 PM Dinner at Temple Sholom with our friends from
the Family Management Center

Simchat Torah

Wednesday, October 15

- 6:00 PM Religious School Consecration & Simchat Torah Service

*IMPORTANT NOTE REGARDING THE TOT AND FAMILY SERVICE: Immediately following the Tot service we will prepare the Sanctuary for our Adult Service. All will be asked to exit the building. Once the Sanctuary is re-set for Adult services, entrance will be permitted. Thank you in advance for your cooperation and understanding in this matter.



To: Debra Gordon and Rita Pompey on their recent marriage

To: Cantor Patty & Jeff Kaplan on the birth of their grandson, Ari Burnett

To: Barbara & John Barr on the marriage of their son David to Cynthia Barry

To: Amy & David Berkowitz on the marriage of their son Daniel to Christine Witkowski

To: Ally Sabatina, daughter of Ellen Horwitz, granddaughter of Loraine Bailie, who graduated from Marple Newtown High School with a four year scholarship to Temple University

Let's share our happy occasions, milestones and good news with one another.

Please submit your information (anniversary, birth, graduation, new job, etc.) by Tuesday of each week to our Temple office:
director@temple-sholom.org.

LIBRARY SERVICE AWARD WINNER: BEV GRANOFF

Congratulations to Beverly Granoff as the 2014 recipient of the David Lefcourt Library Award. Bev has worked in the Library for the past two years. She writes thank you notes to our Library donors in recognition of their support for the Library. Her work is essential to continuation of our library and current informational materials. We are most grateful for her continuing dedication.



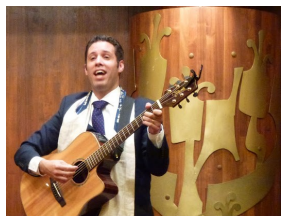
Hilltopper and Sisterhood Discussion Group books are now available in the Library for three week withdrawals. Discussion Group books are located in the back, left hand side of the Library on marked bins. These books are available to lend to Temple Sholom Hilltopper and Sisterhood members.

Hilltopper Discussion Group books include: *Me Before You*, *The Wanting*, *The Chaperone*, *Ten Green Bottles*, *This Is Where I Leave You*, *The Battle Hymn of the Tiger Mom*, *A Great Deliverance* and *The Tin Horse*.

Sisterhood Discussion Group books include: *A Town of Empty Rooms: A Novel*, *The Invisible Bridge*, *Jujitsu Rabbi and the Godless Blonde*, *The Book of Jonah: A Novel* and *The Paris Architect: A Novel*, and *Ravenscraig*.

Please remember to sign out your book by signing the card in the pocket located in the back of each book. Leave the card on the desk in the Library. Happy Reading!

~ Mary Ann Gould and Erica Danowitz
Library Co-Chairpersons



**SAVE THE DATE
NOVEMBER 7 - 9**

**CANTOR MARX
INSTALLATION
WEEKEND**

**SHIR CHADASH:
A CELEBRATION
TO WELCOME
CANTOR MARX AND HIS FAMILY**

Friday, November 7

Catered Shabbat Dinner
Followed by the
Installation of Cantor Marx
with special guests
Rabbi Carla Fenves and
Cantor David Frommer



Saturday, November 8

Cocktail Party
Followed by a Concert Featuring
Danny Maseng

Sunday, November 9

Family fun with a
Rimon Ice Cream Social

Details and Invitations Coming Soon!



NEWS FROM THE INCLUSION AND SPECIAL NEEDS COMMITTEE

New worship experiences are on the calendar for families with special needs! Shabbat *Kulanu* (which means "together") is now in the planning stages; mark your calendars if you have a family member (or guest) with special needs who would like to attend a service designed to meet the needs of children with special needs and mentally challenged adults. The short services will be interactive, structured, and fun, and take place in the Multipurpose room where there is additional space to accommodate persons with disabilities who need to move around. Whether your family member or guest is "on the spectrum," has sensory challenges, severe ADHD, is deaf or visually impaired, mentally challenged, or would benefit from special accommodations not necessarily available on a typical Friday Shabbat Service, we hope that you will join us.

We will be celebrating Hanukkah on Saturday, December 13 and Tu B'shevat on February 7, 2015 at 10:00 am. There is a dedicated planning committee consisting of parents and special needs professionals working with Rabbi Rigler to bring these very special services to our community. More details will be available in future announcements.

The Inclusion Committee continues to work hard to help Temple Sholom become fully inclusive of persons with special needs. We are working with the Temple Beautiful Committee to recommend that additional Handicapped parking and safer access areas for people with mobility challenges be made available when the upper parking lot is

redesigned. We are working with the Religious and Preschool to provide them with consultants to enhance their ability to meet the challenges of students with special needs, including a handicapped accessible playground for the Preschool. We are working with all planning committees and auxiliary groups to assure that their programming and events are accessible to all.

At the end of the recent Annual Meeting, Rabbi Rigler installed and blessed an accessible mezzuzah on the front entry door to our building, so that everyone who enters our Temple Sholom home, including children, people with mobility challenges, and the blind, can reach and touch a mezzuzah. We truly are a blessed and inclusive community.



Please remember that you can support the work of this special Committee that serves our community with a donation to the Inclusion and Special Needs Fund. If you have any concerns or are in need of special needs accommodations for you, a family member, or a guest, please contact Regina Levin, 610-715-1745 or r.k.levin@comcast.net.

~ Regina Levin



CONVERSATIONS WITH MEN (A.K.A. MEN'S SPIRITUALITY)

On [September 21](#) we begin another great year of Conversations with Men. Meet us in the Library; our topic will be: *Mysteries of the Garden of Eden: Exploring the Tree of Knowledge of Good and Evil*. We have more great topics in store. As usual, every meeting will be on Sunday morning and goes from [9:30 to 11:00 am](#), and held in the Rabbi's study or the Library. Mark these dates on your calendars now!

Please pass this along to other guys who might be interested. The more the merrier.

See you on Sunday!

~ Daniel Endy
610-662-2691-c
daniel.endy@gmail.com

October 19 Rabbi's Study
What is the Purpose of Prayer?
Exploring the many forms of Prayer

November 23 Library

The Spirituality of the Cosmos

Exploring Spirituality via the Hubble Telescope

December 14 Rabbi's Study

The Zohar: The book of Divine Radiance

Exploring the Torah through the Lens of the Zohar

January 11 Rabbi's Study

The Spiritual Side of Hospice

Exploring End of Life Issues and Experiences

February 8 Rabbi's Study

Mysteries of the 10 Commandments

Exploring Their Deeper Meaning and Significance

March 22 Rabbi's Study

The Spiritual Implications of Space Exploration

What Outer Space Reveals About our Humanity

April 19 Rabbi's Study

The History and Wisdom of the Prophets

Exploring the Lessons of the Prophets

May 17 Rabbis Study

Maimonides and His Legacy

Exploring the Wisdom of Maimonides

SISTERHOOD HAPPENINGS



Ready for Sisterhood? Sisterhood Is Ready for You!

Ah, those lazy, hazy, crazy days of summer. Those days of soda and pretzels and ... Sisterhood planning? Well, that's not exactly how those lyrics originally were written but we are excited to tell you that in addition to having had loads of adventures this past summer, now that it's almost September, Sisterhood is ready to welcome you back, and to welcome our new members!

Our Welcome Dinner is just around the corner. We are so pleased to announce that our featured speaker at this Sisterhood Opening Event on [Wednesday, October 22](#), will be Anna Marx. She is quite famous in her own right, but some of you may recognize her name as connected to Temple Sholom in Broomall's new cantor, Cantor Jamie Marx. The evening, including a delicious, catered dinner, is free to all paid up and new Sisterhood members. You will have the option to pay your dues that night, but RSVPs are absolutely required. We know you are wondering if "Tina Fey" and "Amy Poehler" will again be making an appearance. We're not divulging! Further details coming next month - but remember to pay your Sisterhood dues so you can join us for this wonderful evening!

Our calendar is chock full of events and we hope to see as many of you as possible during the year. We're delighted to be sending a contingent of our members to the Women of Reform Judaism Atlantic District Convention in King of Prussia from [October 23 to 26](#). We fully expect to wow those WRJ members with the enthusiasm that our Temple Sholom Sisterhood can show.

We will begin our renewed Social Action involvement with our support of a walk for the Alzheimer's Foundation in early November. Watch for details.

Sunday, November 2 should be clearly marked on your calendar for what promises to be an even-bigger, even better Holiday Bazaar. It's also great fun to set up for this event on the afternoon before.

Shhh!!! No details yet but Sisterhood is planning to team up with Brotherhood for something very special this Fall. Mum's the word!

During this upcoming year, we will continue our efforts with fundraising to support our Temple Community through its General Fund, Religious School, Preschool, Youth Group, and Women's Spirituality. In addition, we will continue to provide support to our college students with gifts during Hanukkah and Passover. Our fundraising efforts benefit the Temple community as well as throughout the local community as we give generous monetary contributions to the Life Center of Eastern Delaware County, distributing toiletries to local shelters, and collecting wool to spin into afghans for patients at Life Choice Hospice.

Please support our Gift Garden. It is open with regular hours and by special appointment. September specials include Fall Holiday merchandise and Mezzuzot. Sisterhood members receive a discount.

There are so many ways for you to support our Sisterhood and all the *mitzvot* that we do. Please think about purchasing Jewish National Fund Trees and Happiness and Memorial Cards. Acknowledgements are sent for your generosity and your purchases are featured in The Tidings every month. We additionally want to thank you for supporting Sisterhood with your participation in our annual Shana Tova Greeting Card project.

The Sisterhood Book Discussion group members have also been busy with planning. Our first selection, *The Book of Jonah, A Novel*, by Joshua Max Feldman, will be discussed Thursday, [September 11](#) at the home of Laurie Browngohl. Want to plan your reading for our next Book Club get together? Get ready for [November 13](#), when we'll be discussing *The Invisible Bridge*, by Julie Orringer. Temple Sholom's Library has generously purchased copies of the Sisterhood Book Club book selections for this year. Why not do some browsing in our fabulous Temple Library?

We look forward to you joining us at our opening Board Meeting on [Thursday, September 4 at 7:30 pm](#) in the Temple Library. We encourage all Sisterhood members to attend and we welcome your input.

As Co-Presidents, we look forward to working together with you this upcoming year as part of our Sisterhood Community. Sisterhood is the perfect way to stay involved in Temple Sholom life. Do stay in touch with us; we love to hear from you with your questions, suggestions and comments. Contact us at sisterhood@temple-sholom.org.

~ Frances Epstein and Donna Hendel
Sisterhood Co-Presidents

SISTERHOOD WELCOME DINNER

WEDNESDAY, OCTOBER 22 AT 6:30 PM



Special Guest: Anna Marx

**Delicious Catered Dinner
Free to all paid-up
Sisterhood Members
and New Members of
Temple Sholom**

RSVP to: sisterhood@temple-sholom.org
Reservations are a MUST by September 30

THE HILLTOPPERS

Board Meetings in the Temple Library

Thursday, September 4th at 10:30 am, in the Temple Library. Hilltoppers Board meetings are open to all Hilltoppers members. Join us and see how our activities are planned.

General Meetings in the Multipurpose Room



On **Thursday, September 18th at 7:30 pm**, we will be treated to "Bossa Nova with a side of Chutzpah" by Avi Wisnia. Avi is an award-winning singer/songwriter from Bucks County

who has toured the country with his dynamic ensemble and his debut album, "Something New," performing in prestigious venues across the country - from the Hammerstein Ballroom in New York City to the Kennedy Center in Washington, D.C., and even spending a month on tour in Brazil. Avi has performed alongside artists such as The Toots, Ani DiFranco, Arturo Sandoval and Maroon 5. His music has been featured on TV and in films. He is the winner of several OutMusic Awards and was most recently named Outstanding Keyboard Player of the Year at the MoBucks Music Awards in Pennsylvania.

The interactive performance program will feature an eclectic mix of Avi Wisnia's signature original songs and inventive covers, taking a journey from traditional Jewish melodies to the bossa nova of Brazil and everywhere in between. Avi's songs may be steeped in

a rich tradition of influences but his lyrics give a knowing nod to his contemporaries, and his smooth vocals and deft piano skills assure the audience that this is something new. Avi will be joined by long-time guitarist and musical accompanist, Toru Takiguchi.

At the conclusion of the program, we will enjoy delicious refreshments and conversations with friends old and new. Our meetings are open to Hilltoppers at no charge, with a suggested donation of \$3.00 for non-members and guests.

Book Discussion Group in the Annex

We will meet at **1:15 pm** in the afternoon on **September 23rd** (please note this is a Tuesday) to review *Me Before You*, by Jojo Moyes. The facilitator will be Ethel Levenson. Membership in Temple Sholom is required; however, we do welcome participation from those considering joining the Temple.

Donations

Please direct your donations to the Hilltoppers Fund by making checks payable to: "Hilltoppers of Temple Sholom" and mailing them to the Temple. Your donations will be listed in *The Temple Tidings*.

BROTHERHOOD

Incoming President, Howard Cylinder announces the following upcoming Brotherhood events:

Sunday, October 5th - All hands on deck for our annual Sukkah raising. This stimulating event gives us the chance to turn our love and excitement for our beloved Temple into high-rising action. Charge up those dormant electric drill drivers, dust off the step ladders and bring 'em to the Temple for fast-paced construction action at 9:30 am. We'll have yummys for all helpers. This is a rain or shine erection event.

Sunday, October 19th - The Great Baked Alaska Sukkah Take-Down Event

Beginning at 2:00 pm, bring back those tools and ladders as we break down, transport, and store our spacious Sukkah to its storage home for 50 weeks each year.

Starting at 3:00 pm, Brotherhood and Sisterhood jointly sponsors a free, gala Post High Holy Days/Waffle Cone Ice Cream Schmoozy Social in the Multipurpose Room.

At 4:00 pm, Howard and Bev Cylinder will show photos and videos of their recent trip to Alaska, including showing the story of how in 1949 the pilots of Alaska Air conducted an airlift, rescuing nearly 50,000 endangered Yemeni Jews and flying them to the new State of Israel

Come join us! Interested in Brotherhood? Contact Howard Cylinder at brotherhood@temple-sholom.org.

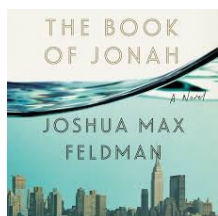
A special note of thanks: Brotherhood is grateful for many years of faithful service from outgoing President Elliot Wunsh - Thanks, El! Well done!

SISTERHOOD BOOK CLUB



The Sisterhood Book Club had a great turnout and lively discussion at our last meeting in July. We discussed *The Lowlands*, by Jhumpa Lahiri. Thank you to Donna Hendel for hosting in her lovely home and to Harriet Rosenblatt for providing the scrumptious snacks. A big thank you to Laurie Browngoehl for leading our discussion group.

Our next meeting will be on **September 11th** and we will be discussing *The Book of Jonah: A Novel*, by Joshua Max Feldman.



We will meet beginning at 7:30 pm at the home of

Laurie Browngoehl
21 Courtney Circle
Haverford PA, 19041

Please RSVP to alissamgm@aol.com

by September 4.

Book Synopsis: The modern day Jonah at the center of Joshua Max Feldman's brilliantly conceived retelling of the book of Jonah is a young Manhattan lawyer named Jonah Jacobstein. He is a lucky man: healthy, handsome, with two beautiful women ready to spend the rest of their lives with him and an enormously successful career that gets more promising by the minute. He's celebrating a deal that will surely make him partner when a bizarre, unexpected biblical vision at a party changes everything.

HAVDALAH IN THE HOME

The Havdalah at home group will start the season on **Saturday, September 13th at 4:30 pm**. The place will be announced in a future communication. We look forward to another year of fellowship, prayer and good food.

Contact Bob Slater at bobnmarians@aol.com to be sure you are on the early invite list.

HONOR FLIGHT PHILADELPHIA

Honor Flight Philadelphia is looking for World War II Veterans who would like to travel to Washington, DC for a day of honor and recognition, at no cost. The day includes transportation, breakfast, lunch & dinner, and a Hero's Welcome Home Show. For information contact Marty Birenbaum at 610-328-2171 or mibge@aol.com.

MITZVAH CORE CARES!

Please let us know if you are aware of someone:

- ★ Entering the hospital
- ★ With a new baby
- ★ Death in the family
- ★ Shut-in
- ★ Other



We want to help! Working together we are truly a caring community.

PLEASE CALL THE TEMPLE OFFICE
AT 610-356-5165

ALL SEASONS CATERING
BY
SHACKAMAXON

MITZVAHS & ALL

ARLENE ROTFELD
PAUL SPANGLER
516-909-8580
215-244-9700

CELEBRATIONS AFFORDABLY!

www.shackamaxoncatering.com

LOOKING FOR DONATIONS

- Do you have a vacation home?
- Tickets to a Sporting Event, Theatre, Symphony?
- Extra Air Miles?
- Restaurant and other store Gift Cards?

We are looking for donations for the
SISTERHOOD HOLIDAY GIFT RAFFLE!

Your support will help make this the
best raffle year yet!

All donations are *tax deductible*!

Contact Melissa Fein at
mfein10@gmail.com or 215-837-1393

SEPTEMBER B'NAI MITZVAH

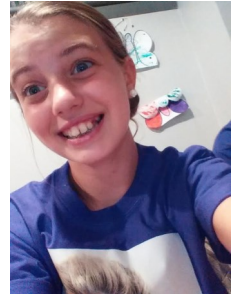
Ezra Michael Frank, son of Jerry Frank and Melissa Shusterman, will become a Bar Mitzvah on September 13. Sharing in his special day will be his brother, Eric, a Junior at Harriton High School, who was confirmed this spring and works as a *Madrachim*; Ezra's grandmother Jill from Vermont; grandmother Heidi and grandfather Bob from Philadelphia; and great grandfather Murray from Philadelphia. His Uncle Noah from Hong Kong is flying in; his Aunt Callie, Uncle Steve and Cousins Jonathan and Justin will be here from Chicago; and his Great Uncle Jimmy and Great Aunt Phyllis will be in from Long Island.

A Welsh Valley 7th grader, Ezra's two loves are playing brass instruments and participating in the Technology Student Association. In music he plays Tenor and Alto Sax, and has just taken up the Bassoon. He is in band, jazz band and orchestra at school. Last year was his first year participating in the Technology Student Association. He loves building tools and using tools - whether physical or digital. In 6th grade he made it to states and had a great time staying at the Seven Springs resort in Pennsylvania with hundreds of other science geeks. This year he hopes to make it to nationals.

For his mitzvah project, Ezra helped with Pet Adoptions at Buzzes Bow Wow Meow in Ardmore. The organization helps find permanent homes for rescue animals, and temporary homes for animals when their people can't take care of them. So if a person gets called up for guard duty, or has a sick family member, they can have someone take care of their cat or dog while they are away. At home, Ezra has two rescue cats named Mischief (who is mischief!) and Mystery (who hides under the bed), and a rescue dog named Lanta.

Ezra's grown up at Temple Sholom. Last summer he spent the summer with his dad and brother crawling around in the crawlspaces wiring the Wifi for the Annex (yuck). He's looking forward to completing his Bar Mitzvah and hopes to stay on to become a *Madrachim*.

Kasey Robin Lukens, daughter of Andrew and Marlene Lukens, will be called to the Torah on September 20. Sharing her special day will be grandparents Lloyd and Chelle Lukens from Delray Beach, Florida, grandparents Bill and Velma Reilly from Havertown, great grandmother Pearl Porter (she will be celebrating her 96th birthday), Aunt Pennie Goldstein, Uncle Michael and cousin Madison Porter also coming from Delray Beach, Florida, cousins Lainie, Darren and Erica Buck coming from Dallas, Texas; and local relatives coming include aunt and godmother Lori Lukens, aunt Diane, Arlene, Carolyn, uncle Ed, Frank, and Donald; and cousins Stephanie, Samantha, Sara, Julia, Christopher, and Matthew.



Kasey is going into the 7th grade at Drexel Hill Middle School. She enjoys cheerleading, softball, soccer, lacrosse, gymnastics, and ice skating. Kasey's cheerleading team won 1st place this year in Competition cheers. Kasey also got distinguished honor roll all 4 semesters in her 6th grade year.

For Kasey's Mitzvah Project she worked in her community on a food drive sponsored by the local Methodist Church. All the foods collected benefits the less fortunate.



Hi Everyone! Welcome to the New Year! We hope you are excited as we are to start this year off right! This summer has brought us many different things at Temple Sholom; a new

Cantor, Jamie Marx, a new synagogue President Emily Mendell and tons of travel from our teens! Some went out of the country to Israel, Europe, Costa Rica and some traveled across the United States. Every month starting in October, we will feature one teen's summer experience. They are amazing young people and do some incredible things here at Temple Sholom and their communities. I can't wait to share their stories with you!

It is a tradition at Temple Sholom that ToaSTY spearheads the annual Food Drive with Philabundance. Please remember to grab a bag at Rosh Hashannah (or grab one of your own) and bring it filled with non-perishable items. Donations will be collected on Yom Kippur, October 4. And, as always, you can bring food beforehand or during

our drive. We really appreciate your help and know that you will come out and support our community!

If you have any questions, or just want to say hi, please feel free to email us at toasty@temple-sholom.org. We cannot wait for this year!

Congratulations to next year's new
Board for 2014-2015:

President: Samuel Weiner
Programming VP: Madison Philips
Religious and Cultural VP: Peri Leavitt
Social Action VP: Haley Amdur
Fundraising VP: Abigail Browngoehl
Communication VP: Ali Prager
Membership VP: Gillian Watson

B'Shalom,
~ Joanna Gould, ToaSTY Youth Group Director

THE ETTA NATALIE ROSENBLATT PRESCHOOL



The beginning of school is always a special time for all students. Whether your child is going for the first time or moving up to a higher class, there is always excitement, anticipation and an eagerness to get started. What is true in general about the beginning of school is particularly true for Preschool students and their families. When you are two or three or four years old, Preschool plays a huge role in your life. Your teacher becomes one of your primary adult caregivers. Your friends help you define your world and your school activities are your personal great adventures.

Simply put, the beginning of Preschool is a magical time for students, parents and staff. Gathering together, getting the school going again, decorating the rooms and the halls, reviewing the schedules, planning out special programs, practicing safety procedures, opening new learning materials and rearranging the furniture so classes flow smoothly are all part of the new year at school. But most of all, it is the arrival of the students and helping them learn about their new classrooms, which makes the start of the school year so special.

Every child brings magic of his or her own to our program. For our part, we try our best to create a safe, nurturing, Jewish environment for our students. The sounds of

laughter, the intensity of drawing and painting and the words of familiar songs are all part of the special mix of sounds and sights which combine to create a school community. For me, these moments are truly a few of my favorite things.

The Preschool staff is ready to get started, and soon enough, the rooms and halls will be filled with the sounds of children! We're very excited about the addition of our new theatre arts program. This will be part of our "specials" rotation on Thursdays. We are also thrilled to announce that Cheri Sperling, a Temple Sholom member and former Preschool family, will be teaching our 3 year old class this year! We know she is going to be a tremendous asset to our school. This year due to the growth of the Preschool, we are also going to have a permanent floater, someone to fill in at a moment's notice wherever needed. We have found a wonderful person to help anywhere and everywhere and that person is Holly Preston.

Alexis Rosenfeld, who has been the Early Childhood Committee Chair, has graduated from the Preschool (actually her son Caleb has), and has passed the torch to Cindy Korenberg. We will all miss seeing Alexis and working with her but we know Cindy is going to be great. Under the combined leadership of Cindy and Alexis we are well on the way to renovating our playground.

The year ahead promises to be a very special one for the Temple Sholom Preschool. It will be filled with wonderful moments, love and growth for our students and our school. I want to wish everybody at our Preschool and at Temple Sholom, a healthy and happy New Year. May 5775 be for all of us a year of peace and happiness!

Welcome back to school and have a great year!

~ Miss Liz, Preschool Director
preschool@temple-sholom.org

Temple Sholom Preschool Temple Tots



Join Our 8 Week Parent & Me Program

This program is a wonderful way
to introduce your child to preschool

Children learn:
preschool routines, Jewish holidays & more
through stories, fingerplay,
music & movement, & art activities

Thursday, October 23 - Thursday, December 11
9:30am-11:00am
\$100 for 8 weeks
or \$15 per session

Registration required by 10/2



Temple Sholom in Broomall
55 North Church Lane
Broomall, PA 19008
Contact Liz Z. Sussman, Early Childhood Educator
610-886-2065
www.temple-sholom.org
preschool@temple-sholom.org



With love, from Camp Menschy!



Introduction to Judaism

This class is for you if you are:

- Jewish and want to learn the basics
- A non-Jewish person interested in or considering conversion
- Not Jewish, part of a Jewish family & want to deepen your understanding of Judaism

This 11 week class will cover:

- The meaning and rituals of Shabbat and other holidays
- Life cycle events such as birth, bris, marriage, conversion and death
- Jewish ethics and prayer

The class will be taught by Rabbi Beth Janus. Classes will be held:
Mondays 6:30-8:00 pm October 6 - December 15 at Temple Sholom

Introduction to Judaism Cost:

\$180 for members of Temple Sholom / \$250 for non-synagogue members
Students will be asked to purchase 3 books for the class.

To ensure that we have enough students, please register by September 29.

Hebrew II: Hebrew For Meaning

Many people are interested in learning the meanings of the prayers but don't know how to begin. Knowledge of the Alef Bet is required. Take this class if you cannot read as fluently as you want and/or if you want to begin learning the meanings of the Hebrew prayers. We will learn how to spot Hebrew roots and will begin to learn how to translate the words of the prayerbook.

Join Rabbi Beth Janus for 11 sessions of Hebrew II Class
Mondays 8:00 - 9:00 pm at Temple Sholom
October 6 to December 15

Hebrew II Cost: \$136 for members of Temple Sholom / \$218 for non-synagogue members. Students will be asked to purchase 1 or 2 books for the class.

To ensure that we have enough students, please register by September 29.

Adult B'nai Mitzvah

Contact Cantor Marx for B'nai Mitzvah information. Cantor@Temple-Sholom.org

Please make check payable to: Temple Sholom In Broomall.

Yes, sign me up ☐ Intro to Judaism (\$180/ \$250) ☐ Basic Hebrew (\$136/ \$218)

Name

Phone E-mail

Mail check to: Temple Sholom in Broomall • 55 N. Church Lane • Broomall, PA 19008

• 610-356-5165 • www.Temple-Sholom.org •

MITZVAH MEAL COOK-IN

Despite a downpour worthy of an ark, Mitzvah Meal cookout-turned-cook-in at the Life Care Center may have been the best Mitzvah Meal yet!

We served 161 hungry (and somewhat damp) people - the most I personally have ever served - there was only enough food for 63 of them to have seconds, but that was probably okay as their firsts seemed to be very satisfying. Almost everyone got a burger, a hotdog and a chicken drumstick on their first plate. We got rave reviews for the meats along with the corn on the cob, salad, watermelon, and homemade baked goods.

Rob Fein, in his debut performance with Mitzvah Meals, proved to be an excellent line cook, turning out 150 flawless franks fresh from the shelter's own stovetop griddle. Then Dave Mendell conceived of the idea to re-heat the burgers and drumsticks by grilling them the same way, which made everything much more barbecue-like. Rachel Amdur went out in search of butter for the corn and came back with a frozen pound of the unsalted kind, and a box of salt! (no supermarkets in that part of town, sad to say). So she and Jeremy creatively microwaved and salted the butter and drizzled over the corn, it was just the gourmet touch we needed.

There were enough bottles of barbecue sauce to drown an army, so each table got its own bottle, while the ketchup, mustard and relish remained near the serving dishes and were well-used.

Hannah and Evie Shanefield and Noah Mendell sang a breathtaking "Hamotzi" which earned an ovation, and almost every diner expressed heartfelt praise and appreciation for all of our efforts.

Dave Mendell and Drew Shanefield managed to wash every pot and pan, while Emily Mendell, Carol Rubin, and Rachel and Jeremy Amdur as well as Hannah, Evie and Noah orchestrated a perfect assembly line, serving food to everyone. Fred Shamlian stationed himself by table of scrumptious desserts (thanks Shannon Farmer and Helena Ciechanowski!) to be sure everyone got his or her fair share.

All volunteers were exceptionally generous in purchasing and/or preparing food for August's feast. I'm especially appreciative of Carol Rubin taking photos for the Tidings.

I am determined to make this "Cook-in" an annual event and look forward to all of you participating again next August! We'll skip the barbecue grills on purpose next time - the indoor version is easier and surely just as delicious.

Thanks so much for everything -

~ Emily Kahn- Freedman

P.S. A very special thanks to Emily from Emily Mendell: It was absolutely fantastic! Thank you, Emily Freedman, for being our fearless leader (and you needed to be rather fearless to take this on)! Your confidence and coolness made the experience that much more enjoyable. And I loved working with such a dedicated team of volunteers - some who were serving for the first time. Our guests said it was the best meal they ever had.

DISCUSSION GROUP

Join us on Sunday, October 19th at 11:30 am for a discussion on the shifting sands of the Middle East ... beyond Gaza. The present war will not be the sole preoccupation. This has been discussed in all the media ad infinitum. Instead we will focus on the greater political shifts occurring in the area and beyond.

at the home of Stella & Ed Maser
32 Hutton Lane, Garnet Valley
(about 30 mins from TS)

610-558-0622 w.wizmom2@verizon.net

Pot Luck as usual - Reminders and a map via email.

You can contact Bob at bobnmarians@aol.com if you wish to be on the early announcement list.

MITZVAH MEALS PROJECT STARTS ANOTHER YEAR

If you've had the chance to help out with Mitzvah Meals, you already know how gratifying it can be to do something that helps others in such a direct and tangible way as actually providing food to hungry people. If you haven't yet experienced this mitzvah, now is the time to consider signing up for the coming year!

Temple Sholom is part of an area-wide program to feed hungry people at the Life Center of Delaware County. Many different religious congregations and schools take turns every night of the year to prepare and serve a meal to over 100 homeless and hungry individuals who gather at this shelter every evening for a hot meal. Our turn is the second Tuesday of every month (next meal is Tuesday, October 14). We have an online signup capability at Signup Genius (<http://www.signupgenius.com/go/60b0948a4ae2aa31-life>). By the time you read this, the Signup Genius page should be set up for the meals scheduled from October through August, 2014-2015. You can sign up for any one of these scheduled meals to purchase food or supplies, to prepare food (using simple recipes provided) and/or to serve food that evening (generally from about 6:00 to 8:00 pm). For the October meal, you can also call Howard Cylinder at 610-355-7554.



What's New for 2014-2015/5775?

One of the goals in our mission statement states that our *Rimon* program is "rooted in the past and looking towards the future." Based on parent, student and faculty feedback after our first year of *Rimon* we are, indeed, looking towards the future. To that end here is what's new for 5775:

Holiday Connections!

dedicated time on select Sundays to learn, celebrate and experience the holidays

Adjusted Sunday Schedule

time blocks have been adjusted to allow for less continuous in-class time

Library Time!

for all K – 3rd grades

Meyuchad Family Engagement

families will have opportunities for individual family as well as group engagement

Sixth grade Gesherim Socials

opportunities for 6th grade students to enjoy social time

Student Portfolios

private and secure portfolios will be created for every student K - 6 on the Evernote platform – sharing learning with students and parents!

The faculty and staff of *Rimon* look forward to sharing this amazing journey with you!

~ Lori Green, Education Director

BIMAH BASKETS

Festive baskets to decorate the Bimah and benefit Temple Sholom's Religious School and the Life Center for Eastern Delaware County.



Two Bimah baskets are \$150 (\$75 each) and a smaller Oneg Basket is available for the Oneg Table for \$45. Interested in ordering the baskets?

Please contact Sandy Barth at 610-353-0293 or email her at sandy.she@comcast.net

Mark Your Calendars

Sunday, September 7

Opening Sunday of Kindergarten - 5th grade *Rimon*

It's a Family Affair!

Parents will drop off their children in their classrooms then join together in the Multipurpose room for a ***Welcome Back & Meet Cantor Marx Brunch 9:30 am - noon***

Monday, September 8

Opening Day of Monday *Rimon* Hebrew
Opening Evening of Academy and Confirmation (free pizza & beverages!)

Tuesday, September 9

Opening Day of Tuesday *Rimon* Hebrew

Sunday, September 14

Opening Session of *Gesherim* 6th grade Family Program ***9:30 am - noon***

SUPERMARKET AND GIFT CARD SCRIP



Choose from among the many Gift Cards available. You shop anyway - why not use a Gift Card instead of cash - It's an even exchange - AND Temple Sholom *Rimon* benefits from your purchases. Call the Temple office **Today** to sign up for automatic monthly Gift Card delivery right to your mailbox!



STOP HUNGER NOW.



WORKING TOGETHER TO END WORLD HUNGER!

Help Us to Reach our Goal!
Each meal costs just 29 cents!
Our Goal is to Package 10,000 Meals...

**You can help by contributing to Rimon*

Religious School

On Sunday, April 19 our **RIMON** families will come together to package 10,000 meals for those who are hungry around the world!

As a community we will work together to fulfill the mitzvah of
Ma'achil R'eivim -
Feeding the Hungry!

Stop Hunger Now distributes its meals through feeding programs operated by partner organizations in developing countries which promote education, encourage children to attend school, improve the health and nutrition of students, address gender inequalities, spur economic growth, combat child labor, and create a platform for tackling global issues. Stop Hunger Now also provides meals in response to crisis relief. Visit them at www.stophungernow.org

\$2,900

\$2,530

\$2,115

\$1,700

\$1,285

\$830

\$455

Welcome Back Brunch!

For all Rimon Parents 

**THE PERFECT WAY TO
BEGIN 5775!**

Reconnect with old
friends and greet new
friends!

Greetings from Rabbi Rigler
and Cantor Marx!

Hear more about Rimon
5775!

**Sunday, September 7
9:30 am – noon**

Drop off your child(ren) in
their classroom and join us
for breakfast "nosh" in the
multi-purpose room!



sponsored by:



October 8 at 7:00 pm
Celebrate Erev Sukkot with our Temple
Community

Join Rabbi Rigler and Cantor Marx for
Sukkot Study & Dinner in the Sukkah*

*rain plans: Multipurpose room

Relax in the Sukkah with the Rabbi and Cantor as together we
explore the meaning and significance of Sukkot.

Feel free to bring your own dairy dinner or you can purchase a dinner
box consisting of your choice of tuna or vegetarian sandwich, chips, pickle and
cookie. Drinks provided. Dinners must be pre-ordered and paid for prior to noon
on October 5.

All are welcome.



Dinner reservations must be in the Temple Office prior to noon on October 5.
(no refunds after October 5)

_____ # will be attending but not purchasing dinner

Yes, count me/us in for the Sukkot boxed dinner:

_____ # of Tuna salad sandwich with lettuce, tomato, onion, pickle and cookie @ \$12 each

_____ # of Mediterranean sandwich with sweet piquant peppers, feta cheese, cucumber,
lettuce, tomato, onion, cilantro hummus on tomato basil bread, chips, pickle
and cookie @ \$12 each.

TOTAL ENCLOSED \$ _____ check # _____

Name _____

Phone _____ E-mail _____

Mail reservation form and check to:

Temple Sholom in Broomall, 55 North Church Lane, Broomall, PA 19008

RSVP Deadline: October 5

Sunday, October 12, 5:30 pm



Temple Sholom is hosting its third annual Sukkot Dinner for residents of the *Family Management Center* (a shelter for mothers and their children). The event will be held at Temple Sholom.

Volunteer Today!

In order to ensure that this year's meal is a wonderful success, we need you, our Temple Sholom members, to volunteer. Please visit the Sign- up Genius link below to learn more or to sign up for one of the many volunteer opportunities (e.g., help set-up or decorate the room, prepare or serve the meal, bake desserts, make crafts projects with the children, cleanup or breakdown the room, or simply join our guests for the meal). There are many opportunities to participate and all are welcome (and greatly appreciated!).

www.SignUpGenius.com/go/10C0D49A9A829A3F94-family1/5075232

Dinner Details

Temple Members who wish to attend the meal should RSVP directly to the Temple Office with the number of guests that will be attending.

Suggested donations for Temple Members who wish to attend the dinner are as follows: \$10 per adult and \$5 per child.

We welcome larger donations to help offset the cost of the meal.

We are intending to provide, as gifts to our guests, bags filled with pre-approved personal toiletries and other supplies. Our guests have specifically requested the following items: women's and children's toiletries, diapers, baby wipes, toilet paper, laundry detergent, cleaning supplies and dish soap. In addition, new towels, blankets and comforters are also in demand (unfortunately, they cannot accept "gently-used" materials).

For additional information or questions, please contact Adam Weinstein at ab_weinstein@yahoo.com or Robin Weinstein at weinsteinrobin@yahoo.com.

WOMEN'S SPIRITUALITY CELEBRATES 25 YEARS!

All Temple Sholom women are welcome to become a part of Women's Spirituality as we begin our 25th year of learning, sharing and spiritual development.

The year 2014-2015 starts on **Wednesday, September 17th at 7:30 pm** as we gather in the library to meet with our very own Director of Education, Lori Green. She will be presenting "A Picture is Worth a Thousand Words - The *Akedah* Through Picture and Prose." The *Akedah* binding (of Isaac) became in Jewish thought the supreme example of self-sacrifice in obedience to God's will and the symbol of Jewish martyrdom throughout the ages. The *Akedah* has been a favorite theme in religious art, literature and prose for centuries. One of the explanations given for sounding of the *shofar* (ram's horn) on Rosh Hashanah is as a reminder of the ram substituted for Isaac. The story of the *Akedah* is read on the second day of Rosh Hashanah. Please plan on joining us as we explore this timely topic.

You are invited to begin your evening with us in the Temple Sanctuary at 6:25 pm for quiet reflection when one of our members will lead us in mindfulness meditation. At the conclusion of the meditation we will move to the Temple Library to begin our program as we examine 'The *Akedah* Through Picture and Prose.'

Please mark your calendars for the following dates. We look forward to sharing these wonderful programs with all women from Temple Sholom.

Women's Spirituality Programs for 2014-15



Wednesdays 7:30 - 9:00 pm, in Library, unless otherwise noted.

Meditation 6:30 -7:15 pm in Sanctuary

Open to all women who are members of Temple Sholom

2014

October 26 - Sunday, *Jewish Mindfulness Retreat*

12:30-5:30 pm with Rabbi Yael Levy

November 19 - Rabbi Stacy Rigler

December 17 - Rosh Hodesh Program

2015

January 28 - Book Discussion: *Hope Will Find You*, by Naomi Levy

February 25 - Shelly Barnathan

March 25 - Rabbi Michele Medwin

April - TBA

May 14 - Thursday, 10:00 am - away program (rain date Monday, May 18)

June 24 - Shelly Barnathan

July 22 - Rabbi Leah Berkowitz

Women's Spirituality thanks Sisterhood for their generous and continuous support of our program, and to all the donors to the Women's Spirituality designated Temple Fund that enable us to provide the programming we offer.

~ Linda Tarash

WOMEN'S SPIRITUALITY JEWISH MINDFULNESS RETREAT

October 26

12:30 - 5:30 pm

Women's Spirituality invites you to join us for a Sunday afternoon retreat in the Temple Annex with Rabbi Yael Levy.

In recent years, Rabbi Yael Levy has focused particularly on Jewish Mindfulness, which grew out of her deep personal commitment to spiritual practice and a passionate belief in its potential to change not only individuals but also the world. Five years ago, Rabbi Yael began what has become *A Way In Jewish Mindfulness* program, which includes programs at Mishkan Shalom in Manayunk as well as independent programs.

She is a spiritual director to rabbinical students in the Reconstructionist and Reform movements and in private practice. In March, Rabbi Yael Levy was honored for being one of America's most inspiring rabbis.

During the afternoon on Sunday, October 26, Rabbi Yael will be guiding us through *Lech Lecha* Journeys. Each of us is called to step forward into the unknown. Each of us is called to turn, change, become, in the face of uncertainty. Each of us is called to live fully and completely, even as we never know what life will bring.

Together we will practice listening into the truths of our lives and discerning ways forward. We will raise up our blessings and open to the wisdom and guidance of the Universe.

Rabbi Yael is looking forward to this journey with you. This workshop is open to all Temple women.

Contact for Sunday retreat information:

kresch@verizon.net

COME MEDITATE WITH US!

Wednesdays Jewish Meditation

This new season begins the fourth year of Wednesday morning Jewish Meditation, held in the Annex. What a wonderful way to start your day by giving yourself the gift of time and spiritual connection. We create a place of holiness as we sit in our warm and welcoming circle. Our meditations might offer mini-teachings of the *Parsha* of the week as a springboard for the meditation. We also bring forward timely ideas and connections with the holiday observances. We often begin with a chant and sometimes introduce prayers or Hebrew letter meditations. There will be times that an occasional journey through visualization will be the theme for our meditation. Each leader brings forward what has resonated for her or him during that week.

Meditation has many benefits, some of which are the ability to focus our attention and see things more clearly. It can enhance our capacity for mindful and healthy living on a daily basis.

Please join us in the Temple Annex on most Wednesday mornings from 9:25 am - 10:15 am. Everyone is welcome and no prior meditation experience is necessary.

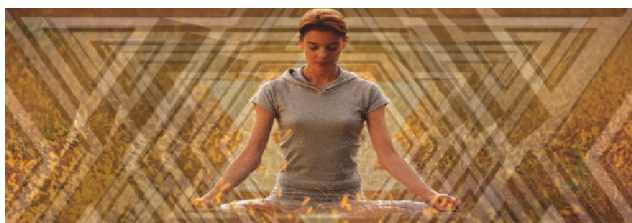
Please mark your calendars for the following dates and times for this month.

September 3, 10 and 17 from 9:25-10:15 am

We look forward to sharing this meditation experience with you.

Please check the Friday announcements for details or for any changes that might occur.

Questions? Please contact the Temple Office or call Linda Tarash at 610-446-2101
linda.tarash@gmail.com



Monthly Pre-Shabbat Meditation in the Temple Annex

September 26 - 7:00 - 7:45 pm

before the Friday night Shabbat service

What does Shabbat mean to you? Shabbat - it's a day of peace and blessing. Shabbat is not about making or changing anything, or feeling a special way, but just waking up, in a focused way, to what's already here. Is your mind calm and quiet enough to pray? Meditation helps get the most out of prayer by shaking off the travel dust of the week and sitting quietly before you start your journey. For some, silence itself is a prayer.

Participants in the Pre-Shabbat meditation on the fourth Friday of most months have commented on how their meditation enhanced and deepened their prayer experience during the service that followed the meditation. Something powerful is added when meditating with others. Shabbat has the power to refocus our lives. We welcome everyone to share in the practice of Jewish meditation. Whether you are familiar or new to meditation, you are welcome to make this a part of your Shabbat practice.

Please plan to join us as we "warm up" for prayer.

We look forward to sharing this time with you.

Questions? Please contact the Temple Office or call Linda Tarash at 610-446-2101 or
linda.tarash@gmail.com.



ATTENTION PARENTS OF TEMPLE SHOLOM COLLEGE STUDENTS

The Sisterhood would love to have the postal address AND email address of your college students for our Hanukkah and Passover packages mailing in the coming year!

Please contact Evie Elias at twosons4mom@comcast.net or call 610-449-0357. Get us your information by **November 1st** so we can have ample time to send out our Hanukkah goodies. Sisterhood enjoys the opportunity to send your children a special package from our Temple community to celebrate the holidays.

HAPPINESS & MEMORIAL CARDS



Did you know that Sisterhood can handle all of your "Hallmark" needs? For \$3.00, including postage, you can send a Happiness/Memorial Card for any occasion, including birthdays, get well, sympathy, etc.

To: Jerry Frank & Melissa Shusterman
From: The Sisterhood Board
Mazel Tov on the Bar Mitzvah of your son, Ezra Frank

To: Andrew & Marlene Lukens
From: The Sisterhood Board
Mazel Tov on the Bat Mitzvah of your daughter, Kasey Lukens

To: Eric & Amy Van Rossum
From: The Sisterhood Board
Mazel Tov on the Bat Mitzvah of your daughter, Hannah Van Rossum

To: Richard Wagner & Lisa Learner-Wagner
From: The Sisterhood Board
Mazel Tov on the Bar Mitzvah of your son, David Learner-Wagner

To: Tim Isle & Bettina Rubin
From: The Sisterhood Board
Mazel Tov on the Bar Mitzvah of your son, Sam Isle

To: Cindy & Jim Meyer
From: The Sisterhood Board
Shirley & Marty Birenbaum
Fran & Norman Epstein
Mazel Tov on the birth of your grandson, Aden Cooper Meyer

To: Debra Kirsch
From: Bev & Steve Granoff
Happy 60th Birthday

To: Mrs. Lois Kaliner & Family
From: Bev & Steve Granoff
Condolences on the death of your beloved husband, Larry Kaliner

To send Happiness & Memorial Cards contact
Shirley Birenbaum at 610-328-2171 or
email surabassa@aol.com.

To: Evalyn Elias
From: The Sisterhood Board
Shirley & Marty Birenbaum
Sharon & Charles Goldman
Fran & Norman Epstein

Mazel Tov on the birth of your granddaughter, Rachel Eleanor Elias

To: Milton Wolf
From: The Williamson Family
The Sisterhood Board
Condolences on the death of your beloved brother, Seymour "Sy" Wolf

To: The Husick Family
From: The Williamson Family
The Sisterhood Board
Gloria & Ed Kresch
Sharon & Charles Goldman
Condolences on the death of Babette Husick, beloved mother, mother-in-law, & grandmother

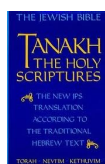
To: Debra Kirsch & Family
From: The Sisterhood Board
Shirley & Marty Birenbaum
Gloria & Ed Kresch
Cindy & Jim Meyer
Fran & Norman Epstein
Condolences on the death of your beloved father, Fred Garfinkel

To: Becky Krangel
From: Sharon & Charles Goldman
Mazel Tov on your twenty years at Temple Sholom

To: Cantor Kerith Spencer-Shapiro & Family
From: Sharon & Charles Goldman
Shirley & Marty Birenbaum
Best wishes for happiness & success in your new home



TANAKH STUDY WITH RABBI RIGLER



Wednesday
September 3, 10 & 17
at 10:30 am in the Library

JNF TREES AND WATER FOR ISRAEL



A quick and easy way to honor and/or remember a friend, relative or event is to have one or more trees planted in Israel. Or a donation may be made to help meet Israel's water needs. In either case a lovely certificate is sent to the honoree and/or family. For details, pricing options and to make arrangements through the Jewish National Fund, please call Shirley Birenbaum at 610-328-2171, or email surabassa@aol.com.

A tree was planted by Sandy & Sandy Barth in honor of Deb Kirsch's birthday.

Two trees were planted by Cindy & Jim Meyer in honor of Deb Kirsch's 60th birthday.

A tree was planted by Ken W. & Sharon Z. in memory of Shirley Belitsky, beloved mother, grandmother, & great grandmother of the Shames Family.

A tree was planted by Ken, Sharon, Greg, Brian, & Stephen in memory of "Callie," beloved pet cat of the Hahn-Weiss Family.

A tree was planted by Elizabeth G. Mellman in memory of Leona Franklin, beloved grandmother of Christine Olmsted.

CASA VOLUNTEERS NEEDED!

CASA (court appointed special advocates) of Philadelphia County is looking for volunteers! We are part of a national organization dedicated to training volunteers from the community who are committed to advocating for abused and neglected children in foster care. Volunteers come from all walks of life and upon completion of training and appointment by a judge in Family Court become the "eyes and ears" for the court in making recommendations for what is in the child's best interest.

Our next evening training classes begin on **Thursday, September 4**. For more information, please contact:

Cindy Blum, EdM, Volunteer Coordinator
1501 Cherry St., Phila, PA. 19102
267.519.5325
www.casaphiladelphia.org
www.facebook.com/casaphiladelphia

A tree was planted by Harriet & Herb Rosenblatt in memory of Fred Garfinkel, beloved father of Debra & Alan Kirsch.

A tree was planted by Harriet & Herb Rosenblatt in memory of Babette Husick, beloved mother of Lawrence & Margaret Husick.

A tree was planted by Eileen, Bucky, Jeni, Bryan, Jordyn & Austin Buckwalter in memory of Stanley B. Lindner, Jr., beloved father of Steve & Donna Lindner & Family.

A tree was planted by Gloria & Ed Kresch in honor of the 50th Anniversary of Yael & Bill Golton.

A donation was made by Deb & Al Kirsch to the Parsons Water Resource Development Fund in memory of Nathan Rickoff, beloved uncle & brother of Sandy Barth & Family.

OUT OF THE DARKNESS WALK OCTOBER 5 @ 9:00 AM - 12:00 AM

Please become part of Team DMAX and join us as we walk together to support the American Foundation for Suicide Prevention on **October 5**. This 'Out of the Darkness' community walk (3-5 miles) will start at 9:00 am at the Philadelphia Art Museum.

CONTACT US AT TEAMDMAX@DMAXFOUNDATION.ORG FOR MORE INFORMATION AND TO GET A TEAM DMAX T-SHIRT!
FOR MORE INFO, [HTTP://WWW.DMAXFOUNDATION.ORG/](http://WWW.DMAXFOUNDATION.ORG/EVENT/DARKNESS-WALK/)
[EVENT/DARKNESS-WALK/](http://WWW.DMAXFOUNDATION.ORG/EVENT/DARKNESS-WALK/).

D-MIXER: OCTOBER 17 @ 7:00 PM - 12:00 AM

Join us on **October 17 at 7:00 pm** to mix and mingle with DMAX friends and supporters. Meet the people behind the important work DMAX is doing and enjoy the great food and drinks of the Great American Pub at 123 Fayette Street in Conshohocken. Plus, we will celebrate our DMAX Team who participated in the American Prevention Suicide Annual Walk on October 5. For more info, <http://www.dmaxfoundation.org/event/dmixer/>.

SUPPORT THE SCRIP PROGRAM BY SIGNING UP TODAY!

All Temple members are encouraged to support the Scrip program with Giant, Acme, Superfresh, and Shoprite Supermarkets. It's a Mitzvah to support the Scrip program to benefit the *Rimon* Technology Fund.

Last year with your support, the Script and Gift Card Program raised \$1,000 for the fund! Think what we can do this year!

I want to remind Congregants that Scrip and Gift Cards are available all the time - even when *Rimon* is not in session. Please contact either Nertila in the Preschool office or Becky and me (Evalyn) in the Temple office.

~ Evalyn Elias

REMEMBER TEMPLE SHOLOM WHEN YOU SHOP ON AMAZON.COM

Please remember to make your amazon.com purchases through the Amazon link on the bottom of our website - <http://www.temple-sholom.org> and Temple Sholom will automatically receive a commission based on your purchase. No further steps are necessary.

To make it even easier, click on the icon from the Temple Sholom webpage and save it in your favorites! Thank you for your support.

The Temple Tidings Publication Guidelines

Deadline for the October 2014 issue: September 5

The Temple Tidings is published monthly. Material submitted for publication may be edited for style, length and content. Anonymous submissions will not be printed.

Please make submissions by EMAIL if possible. A confirmation message will be sent on receipt of your e-mail or send submissions to the Temple TYPEWRITTEN or CLEARLY PRINTED. Questions?

tidings@temple-sholom.org

TEMPLE SHOLOM STAFF AND BOARD

Professional Staff

Rabbi Peter C. Rigler
Cantor Jamie Marx
Rabbi Emeritus Mayer Selekman
Cantor Emerita Patrice Kaplan
Abbey Krain, Executive Director
Lori Green, Education Director
Liz Z. Sussman, Early Childhood Ed. Dir.
Sandy Cohen, Community Coordinator

Temple Sholom Executive Board (2014-2016)

Emily Mendell, President
Mary Ann Gould, Executive VP
Steve Kanes, Senior VP
Steve Granoff, Treasurer (term ends 2015)
Jim Meyer, Secretary
Mark Rubinoff, Member at Large
Shannon Farmer, Member at Large
Mike Danowitz, Immediate Past President

Temple Sholom Board of Trustees

(term ending in 2015)
Evalyn Elias, Margaret Husick, Eric
Lieberman, Alexis Rosenfeld, Mitch
Wolfson, Arthur Zabell
(term ending in 2016)
Nancy Bloomfield, Laurie Browngoehl,
Robin Gall, Rebecca Parmet,
Melissa Shusterman
(alternates)
Mike Samuels, Melissa Fein, Jennifer
Morgan, Jeff Farhy

Auxiliary Representatives

Howard Cylinder, Brotherhood
Cindy Meyer, Hilltoppers
Donna Hendel and Frances Epstein, Sisterhood
Joanna Gould, Youth Group Director

Doing Mitzvot in the Community?

Please let us know so we can share your story with the congregation! Contact the Temple Tidings Editor at tidings@temple-sholom.org

INVITATIONS FOR ALL OCCASIONS!

- ✧ NEWBORN ANNOUNCEMENTS
- ✧ STATIONERY
- ✧ BAR/BAT MITZVAH
- ✧ WEDDING
- ✧ SAVE THE DATE

Contact Nancy at 610-325-4297 or haz@comcast.net for more information

SHOP SHOLOM SUPERMARKET & GIFT CARDS / AMAZON



Families! Try Gift Cards online ordering system. Please use the following code when registering for ShopWithScrip.com 983DL9A317L72
Gift cards can also be ordered now through the School Office or during Sunday Religious School hours in the lobby or the easiest and BEST WAY:

Become a regular monthly subscriber!

Contact Nertila in the School Office at 610-886-2065 or schooladmin@temple-sholom.org

HERE IS HOW TO FIND OUR LIVE WEBCAST ...

Go to our website:
www.temple-sholom.org
Click on "Live Webcast"
It's on the home page.
It's that simple!

**Not all services will be webcast.*

THE GIFT GARDEN

OPEN BY APPOINTMENT

PLEASE CONTACT LINDA PHILLIPS AT
610-644-7904

CONTRIBUTION FORM

I wish to make a donation to the _____ Fund in the amount of \$ _____

The contribution is in (check one): _____ memory _____ honor _____ appreciation of: _____

The card should read: _____

This gift of tzedakah is from: _____

Address: _____

Area/Phone: _____

Please send this form with your check made payable to:
TEMPLE SHOLOM, 55 North Church Lane, Broomall, PA 19008

TZEDAKAH



Cantor's Discretionary Fund

In memory of Howard Cossuth
William & Roni Kozin
In memory of Lenore Gottlieb
Welcome to Temple Sholom,
Cantor Marx
Harry & Arlana Gottlieb
In memory of Frances Berger
Martin & Shirley Berger

Cantor Kaplan Chair for Sacred Music

In memory of Jack Vanett
Bruce & Mary Elizabeth Vanett
In memory of Babette Husick
In memory of Fred Garfinkel
Steven & Beverly Granoff
In honor of Dr. Robert Plotkin's
90th birthday
Sandy Michaels

Excellence In Early Childhood Education Fund

Jake, Lisa, Talia & Noah Lusklin
Dave & Julie Raiken
In memory of Meyer Glasberg
Matthew & Shelby Frankel
In memory of Louis Grossman
Evalyn Elias
In memory of Michael Frieman
Ken & Diane Sheinen
Mazel Tov to Raleigh Rigler on
your new home
Temple Sholom Congregation

Financial Review

In memory of Charles Litt
Hal & Barbara Litt
In memory of Lewis A. Usset
Myron & Analee Granik
In memory of Sarah Kahn
In memory of Adeline Tanenbaum
Neal & Marlene Kahn
In memory of Linda Wolin
Robert & Leslie Neff
In memory of Fred Garfinkel
Robert & Rita Modell
Louis & Anita Miller
In memory of Israel Schwartz
Edwin & Annilee Seitchick
In memory of Joseph Berger
Martin & Shirley Birenbaum

General Fund

In memory of Harry Handwerger
Jay & Nancy Handwerger
In memory of Ida E. Sharf
Norma Munin
In memory of Babette Husick
Elaine Smith
Alan & Susan Weiss
In memory of Fred Garfinkel
Thelma Alexander
Lisa & Eric Schwartz
Amy & Jeff Fain
Barry & Teresa Slaiman
Mazel Tov on the birth of Rachel
Eleanor Elias, granddaughter of
Evalyn Elias
Raleigh Rigler

In honor of the 50th wedding
anniversary of Robert & Marge
Feldman
Carol Rubin

Hilltoppers Fund

In memory of Jerome Justan
Sanford & Sandy Barth
In memory of Fannie Coppelman
Ethel Levenson
In memory of Beverly Tanenbaum
In memory of Joseph Zon
Judy Zon
In memory of Mary Deitch
Serene Friedman
In memory of Joseph & Sophie
Rabin
Arthur & Sylvia Rabin
In memory of Morton Waldbaum
Joan Waldbaum
In honor of the birth of Aden
Cooper Meyer, grandson of Cindy
& Jim Meyer
Evalyn Elias
Serene Freedman
Ethel Levenson
Shirley Chalick
John & Barbara Barr

Hospice and Healing Fund

In memory of Anna Handwerger
Jay & Nancy Handwerger
In memory of Sylvia Regar
Dan & Pam Haas
In memory of Phillip Miller Semans
Adam & Maureen Davey
In memory of Abraham Solomon
Barry & Carol Jacobs
In memory of Marie S. Palisano
Jeffrey & Margaret Yarmel
In memory of Phil Krieger
In memory of Faye Friedlander
David & Barbara Smilk
In memory of Martin Hoffman
Robert & Arlene Hoffman
In memory of Maejean Bender
Robin Stevens
In honor of the marriage of Daniel
Berkowitz to Christine Witkowski
Al & Debra Kirsch

Howard Weiner Library Fund

In memory of Reuven Emanuel
Schanzer
Howard & Ruth Rosenberg
In memory of Dorothy Rein
John & Merraine Rein
In honor of the 50th wedding
anniversary of Marge & Bob
Feldman
Benson & Lynne Klempner

Inclusion & Special Needs

In memory of Helen Kaufman
In memory of Hy Buller
In memory of Aronita Mitchneck
Marc & Stephanie Albero
In memory of Gertrude Jacobs
In memory of Morris Goldstein
Jerry & Barbara Goldstein

In memory of Stephen Poch
Richard & Honore Poch
In memory of Doris Levin
Paul & Gina Levin
In memory of Seymour Kaspin
In memory of Adele Surpin Mushnick
In appreciation of Rabbi Peter Rigler
In appreciation of Abbey Krain
In appreciation of Elliot Rosen
In appreciation of Samuel Domsy
Jerry & Barbara Goldstein

Judith Bernick Music Fund

In memory of Laura Wildman
Robert & Arlene Hoffman

Preschool Fund

In memory of Jeanne Rosenfeldt
Philip & Lisa Rosenfeldt

Rabbi's Discretionary Fund

In memory of Florence Kauffman
Alan Kauffmann & Rochelle Solow
In memory of Abe Cossuth
William & Roni Kozin
In memory of Sara Goldstein
Natalie Silverman
In memory of Barbara Grass
Robert & Karen Munin
In memory of Harold Newman
H. Jeffrey & Judy Newman
In memory of Sylvia Borloff
David Cohn & Carol Borloff
In memory of Mildred Newman
H. Jeffrey & Judy Newman
In memory of Max Goldberg
Dan & Beverly Joie
In memory of Sylvia Weiner
In memory of Pauline Plotkin
Kevin & Mollie Plotkin
In memory of Ann Herman
Opstbaum
Tim & Ellisa Habbart
In memory of Steven Roth
Wendy Frankel

Religious School Education Fund

In memory of Lionel Feinstein
James & Robin Briggs
In memory of Freda Nach
Howard & Ilene Brouda
In memory of Joseph Burakof
In memory of Isaak Finkelstein
In memory of Donald & Bertha
Whitken
Samuel & Carol Finkelstein
In memory of Estelle R. Rittberg
Micah & Wendy Haywood

Sanctuary Book Fund

In memory of Della Jaffe
Allan & Diane Jaffe

Selekman Jewish Leadership Fund

In memory of Eva Schwartz
Neil & Judy Schwartz

Temple Beautiful Fund

In memory of Lita Salameda
Jeffrey & Lon Rosenblum
In memory of Ludwig Steinbach
Brook Levin

Tzedakah Fund

In memory of Nelson A. Boutillier
Stephen & Janice Barnett
In memory of Sarah Levin
In memory of Philip & Evelyn
Gerber
Larry & Connie Levin
In memory of Marty Arden
Mitchell & Lori Arden
In memory of Sylvia Kraft
Barbara Drizin
In memory of Claire Sheffler
Shirley Sheffler
In memory of Dr. Bernard &
Thelma Covner
Frederick Kelner & Ellen Covner
In memory of Marion Leventon
Ellen Lipschutz
In memory of Tom Boberg
Adele Persky
In memory of Mortimer Berke
Robert & Marcie Berke
In memory of Jacob & Lena Drizin
In memory of Harry Gelman
Barbara Drizin
In memory of Edward Sheffler
Shirley Sheffler
In honor of Zev Spencer-Shapiro's
Bar Mitzvah
Herb Rosenblatt & Harriet
Schultz Rosenblatt

Youth Scholarship Fund

In memory of Helen Gilman
Kevin & Laurie Brownogehl
In memory of Jeffrey Kedson
Leonard & Phyllis Kedson
In memory of Fred Garfinkel
Robert, Susan, Ian & Brian Kohn

Women's Spirituality Fund

In memory of Jack Kalish
In memory of Edmund Holt
Scott Kalish & Alison Holt-
Kalish
In memory of William Bycer
Linda Tarash
Mazel Tov on the birth of Rachel
Elias, granddaughter of Evalyn
Elias
John & Barbara Barr

**Please Support
Temple Sholom by
donating to our
various Funds.
See page 30 for list of
funds and page 28 for
the Contribution form**

The Temple Tidings



**Temple Sholom
in Broomall**
55 North Church Lane
Broomall, PA 19008
610-356-5165 Phone
610-356-6713 Fax
610-886-2065 Education Office
www.temple-sholom.org
tidings@temple-sholom.org

Our Caring Hospice

**Trained Temple Sholom
volunteers are here to help!**

Please call us - we are here for you.

**Contact Rabbi Rigler and Cantor Marx
at the Temple or call
Pam Haas 484-802-1186 or
Amy Berkowitz 610-353-8077**

ONGOING COLLECTIONS

Wool is needed for the Knit Wits - leave at the Office in a bag with "Amy" labeled on it.

Toiletries are needed for the Life Center of Delaware County - bring to the Temple Office.

Canned Goods are always needed to help with empty pantries - a donation box is located in the coat-room closet.

HELP US RECYCLE:



- ⇒ Old laser and ink jet cartridges
- ⇒ Cell phones
- ⇒ Small electronics like:
 - ⇒ Digital cameras
 - ⇒ ipods
 - ⇒ ipads
 - ⇒ MP3 players
 - ⇒ GPS
- ⇒ Laptops



**Bring items to the
Temple Office**

TEMPLE FUNDS

Cantor's Discretionary Fund

Contributions to this fund will be used at the discretion of our Cantor.

Excellence in Early Childhood Education Fund

To support the programs of the Etta Natalie Rosenblatt Preschool.

Financial Assistance

To offset the reduction of revenue incurred when a Temple Sholom family cannot afford to pay their total dues. Contributions go directly into the General Fund.

General Fund

To support Temple operations.

Hospice and Healing Fund

To assist the Hospice Committee in carrying out its support programs.

Howard Weiner Library Fund

An endowment fund in which the interest is used to purchase books and supplies for the library.

Inclusion and Special Needs Fund

To purchase services, supplies, and equipment to assist congregants, students, and guests in need of accommodations that enable them to participate fully in all aspects of congregation life.

Jubilee Endowment Fund

To secure the future of Temple Sholom in Broomall.

Judith Bernick Music Fund

An endowment fund in which the interest may be used for the music program.

Marlene B. Kleinman Campership Fund

Interest is used to send students to a URJ camp each year.

Mayer Selekmán Jewish Leadership Fund

To provide grants for graduate study toward becoming a Jewish professional.

Rabbi's Discretionary Fund

Contributions to this fund will be used at the discretion of our Rabbi.

Religious School Education Fund

To support programs, special events and materials for education at all levels.

Contributions can be earmarked for Women's Spirituality Group studies at the donor's discretion.

Cantor Kaplan Chair for Sacred Music Endowment

To endow the cantorial position at Temple Sholom, ensuring the future of Jewish music in our congregation.

Sanctuary Book Fund

To defray the cost of purchasing books for our sanctuary. A book plate is placed in each book indicating the donor's name and the occasion, for a minimum donation of \$36.

Technology Fund

To maintain and improve all aspects of technology, including our new Webcast used by Temple Sholom.

Temple Beautiful Fund

To improve and maintain the aesthetics of the Temple, including decor, furnishings, grounds and gardens.

Tzedakah (Food) Fund

To feed the hungry in our community. Contributions are distributed at the close of each fiscal year to outside charities at the discretion of a special Tzedakah committee.

Youth Scholarship Fund

To send Temple Sholom Youth Group members to National Federation of Temple Youth (NFTY) sponsored events. Scholarships are awarded based on financial need.

Contributions also may be made directly to the **Temple Sholom Brotherhood, Sisterhood, Hilltoppers or Women's Spirituality.**

Yahrzeits in September ... Z"L

September 1

Joseph Berger
father of Shirley Birenbaum
Barney Chalick
father-in-law of Shirley Chalick

September 2

Jacob Drizin
father-in-law of Barbara Drizin

Grace Endy

mother of Daniel Endy

Irvin Silverman

September 3

Joseph Rabin
father of Arthur Rabin

September 4

Pauline Plotkin
grandmother of Kevin Plotkin
Sarah Silverman
aunt of Susan Garelik
aunt of Amy Berkowitz

September 5

Nathan C. Eisen
grandfather of Alissa Goodkin
Mildred Newman
mother of H. Jeffrey Newman

Herbert Querido

uncle of Steven Querido

Sophie Rabin

mother of Arthur Rabin

Bessie Waxler

Emily Whitehead

grandmother of Donna Witonsky

September 6

Maejean Bender
mother of Robin Stevens
Jack Sewitch
father of Arline Lieberman

September 7

Rose Abrams
aunt of Barbara Mark
Lena Drizin
mother-in-law of Barbara Drizin
William Rigler
brother-in-law of Raleigh Rigler

September 8

Abraham Aronow
father of Pearl Klausner
Ann Herman Opstbaum
mother of Ellisa Habbart
Sam Persky
husband of Adele Persky
Morris Radnofsky
Steven Roth
brother of Wendy Frankel

September 9

Herbert Barag
brother of Donald Barag
Arthur Ettelson
brother of Shirley Chalick

September 11

Louis Bernkrant
father of Arlana Gottlieb
Ruth Deutsch
grandmother of Aimee Rubin
Jerome Dorfman
uncle of Drew Dorfman
Doris Levin
mother of Paul Levin

Jean Nemerofsky
mother of Judy Zon

Lillian Margolis Rapport

Muriel Rosin
aunt of Carl Rosin

Morton Waldbaum
husband of Joan Waldbaum

September 12

Reba Bernstein
grandmother of Mitchell Wolfson
Jennie Breakstone
grandmother of Drew Dorfman
Sophie Garber
aunt of Carol Finkelstein

Louis Greenwald
grandfather of Linda Cantor

Betty Hilzenrath
great aunt of Elyse Endy

September 13

Joseph Garber
father of Judy Zon
David Haluska
brother-in-law of Thomas & Jessica Lynn

Charles Husick
father of Lawrence Husick

Phillip E. Miller
father of Carl Miller

Bernard Watter
father of Steven Watter

September 14

Dorothy Guttenberg Cohen
Sheldon Frank
brother of Barbara Drizin
Sally Harris
mother of Ilene Berger
Lillian Kaufmann
aunt of Jerald Mark
Irving Kraus
grandfather of Lawrence Husick
Dorothy Sachs
mother of Paul Sachs
Roberto Stein
uncle of Vera Neumann-Sachs
William Stone
cousin of Mayer Selekmán

September 15

Boris Wolinsky
Melvin Brecher
husband of Anita Brecher
Margarita de Ochoa
Maurice Hoenig
William Kapnic
uncle of Cynthia Fastman

Paul Rosenberg
cousin of Loraine Bailie

Beth Stiefel-Itoh
sister of Eileen Buckwalter

September 16

Abraham Kristol
friend of Mary Weiner
Fannie Lazarus
mother of Michelle Wilson
Irvin Tarash
father-in-law of Linda Tarash

Nat Tucker

September 17
Bettie Malarkey
mother of Tim Malarkey

Stanley Schwartz
uncle of Robin Weinstein

Barbara Zlotkin
mother of Sloane Zlotkin

September 18

Anna P. Baskin

September 19
Ann Rosenberg
mother of Eric Rosenberg

Sidney Thomas
father of Lisa Pottiger

Sidney Yarmel
father of Jeffrey Yarmel

Daniel Polsky
father of Allen Polsky

September 20

Miriam Augsberger
sister of Saul Robbins

Irving Silverman
grandfather of Beth Cope

Sophie Springer
grandmother of Jeffrey Springer

September 21

Bernard Granoff
father of Steven Granoff
Louis Smolinsky
father-in-law of Rosalyn Smolinsky

September 22

Myrna Biderman
cousin of Marsha Rosenbloom

Martin Brandt
Charles Brouda
father of Howard Brouda

Jacob Graboyes
father-in-law of Betty Graboyes

Philip Kaspín
uncle of Barbara Goldstein

Sidney Newman
uncle of Howard Brouda

Sally Satell
Freda Sherman
grandmother of Peter Witonsky

September 23

Rosalyn Altschuler
Moses Amdur
grandfather of Brett Amdur

Bertram Biggard

September 25

Rebecca Bernhang
mother of Joan Waldbaum

Miriam Ginenthal
aunt of David & Barbara Smilk

September 26

Daniel Haywood
brother of Micah Haywood

Stepan Krivoruchko
great uncle of Ellen Bedenko

William Levy
brother-in-law of James Meyer

Freda Saltz
mother of Judy Saltz

Reba Schwartz

mother of Annilee Seitchick

Louis Smolinsky
father-in-law of Rosalyn Smolinsky

September 27

Evelyn Gerber
mother of Constance Levin

Marilyn Kaplan
friend of Daniel & Elyse Endy

Alex Kaplan
friend of Daniel & Elyse Endy

Lillian Leibowitz
aunt of William Kozin

Selma Sobel Lipson
mother of Marcia Littell

Sigmund Miller
uncle of Laurie Burstein-Maxwell

Mary Rotman

Diane Savar
friend of David & Barbara Smilk

Rebecca Smolinsky
mother-in-law of Rosalyn Smolinsky

September 28

Bernice Cohen
Charles Sussman
brother-in-law of Cynthia Meyer

Frank Wolin
father of Leslie Neff

September 29

Dawn Ferrante
friend of Scott & Mary Ann Gould

Alexander Granik
father of Myron Granik

Norman Grekin
Hyman Gutmaker

grandfather of Jennifer Morgan

Paul Kremens
husband of Sharon Kremens

Maurice Robbins
brother of Saul Robbins

Rebecca Smolinsky
mother-in-law of Rosalyn Smolinsky

Ruth Yaskin
friend of Laurie Albert

September 30

Clara Banderoff
Nathan Eisner
uncle of Harriet Schultz-Rosenblatt

Anne Hershhorn
grandmother of Samantha Smith

Nathan Kirsch
father of Alan Kirsch

Jack Rimalover
grandfather of Katherine Gray

Lisa Sanna
friend of Staycee Liberatore

RECENT DEATHS

Marcia Sue Kaspín,
sister of Barbara Goldstein
Seymour "Sy" Wolf,
brother of Dr. Milton Wolf
Babette Husick,
mother of Lawrence Husick

Fred Garfinkel,
father of Debra Kirsch
Adele Surpin Mushnick,
aunt of Barbara Goldstein

Christopher DiFiore,
friend of April Sica
Doris Coppock,
friend of Carol Rubin

Dr. Julius Guarino,
friend of Ellen Lipschutz
Phil Axelrod,
friend of Gina Levin

Juan David Lambour,
brother-in-law of Vera Neumann-Sachs
Michael Resnik,
cousin of Charles Lerman

Donald Horrow,
father of Cindi Cooper
Fredia Hurdle,
future-in-law of Elyse & Daniel Endy

CAREER EXPO

Matching Your Skills & Experience
with Regional Employers
Who Are Ready to Hire



Wednesday, October 22

10 am to 2 pm

Jewish Community Services Building
2100 Arch Street, Philadelphia, PA 19103
(Accessible by public transportation)

**Meet with regional employers
who are looking for you!**

One-on-one résumé check-up

**FREE career workshops on Salary Negotiations,
Using LinkedIn as a Job-hunting Tool &
an Employer Panel "What we are Looking for."**

**JEVS Human Services Career Consultants will be
on-hand to help you succeed in your job search!**

Registration encouraged. Let us know you're coming and
you'll receive a FREE job search tool kit!

To register or for more information, contact Wendy Rosenfeldt
at 215.564.1874 or visit jewishphilly.org/expo



LOVE TO READ? ENJOY HELPING OTHERS? BECOME A VOLUNTEER LITERACY TUTOR!

The Delaware County Literacy Council (DCLC) provides free one-to-one tutoring to local adults with low literacy skills. Tutors and students meet at times and locations convenient to their schedules. The next training for volunteer ABE (Adult Basic Education) tutors will be held **Saturdays, September 13 & 20, 9:00 am to 2:30 pm, and Wednesday, October 15, 6:30 to 8:00 pm**, at DCLC, 2217 Providence Avenue, Chester, PA 19013. ESL (English as a Second Language) tutor training dates are also available. Bachelor's degree, attendance at all sessions and pre-registration required. To learn more, visit www.delcoliteracy.org or call Melina at 610-876-4811.

VOLUNTEERS NEEDED TO TUTOR ADULTS

If you have time, talent, and energy, you can make a difference by becoming a volunteer literacy tutor to a Delaware County adult. The Delaware County Literacy Council (DCLC) is offering 12 hours of free ABE or ESL tutor training in both September and November. Training is held at DCLC, 2217 Providence Avenue, Chester, PA 19013. Bachelor's degree and pre-registration required. To learn more, visit www.delcoliteracy.org or call Melina at 610-876-4811.

In today's world if faced with a dangerous situation
do you want yourself or someone you love

TRAINED or UNTRAINED?

Israeli Self-Defense Boot Camp

- Israeli Self Defense Training
- It's SAFE, FUN, and REALITY BASED
- 7 classes a week
- Open to everyone over the age of 13 years old.
- No experience is needed.
- Classes are now forming.

Introductory special - \$169 for 10 Classes includes Striking Gloves

Reserve your space now by contacting Bodyworks at **610-566-6280**

or email us at shaperokarate@verizon.net

WWW.MEDIAKARATE.COM

• BODYWORKS KARATE CENTER •

135 EAST BALTIMORE AVE . MEDIA, PA . 610 566 6280



THE TRADITION GROWS

SERVING THE GENERATIONS...



PAST, PRESENT AND FUTURE

Levine's new memorial chapel, Trevoze, PA

For more than 117 years, the family-owned Joseph Levine & Son Memorial Chapel has maintained a high reputation for quality while serving generations in the Jewish community.

And now the tradition grows with our new Bucks County Memorial Chapel, in addition to our Philadelphia and Main Line locations.

Whether you need pre-arrangement assistance or time-of-need service, you can find it in any of our three convenient locations.

Our knowledge of and experience with Jewish traditions will insure that every detail of a funeral is handled efficiently, sensitively and at a most competitive rate. We are proud to offer the highest quality care.

Remember us. We are available 24 hours a day, seven days a week, to answer your questions and to help.

JOSEPH *Levine* & SON

Memorial Chapel

SERVICE, TRADITION & DIGNITY

2811 West Chester Pike
Broomall, PA 19008
(610) 325-2000
Elliot J. Rosen,
Supervisor








7112 North Broad Street
Philadelphia, PA 19126
(215) 927-2700 or
(800) 992-3339
Joseph H. Levine,
Supervisor

4737 Street Road
Trevoze, PA 19053
(215) 942-4700
Samuel Brodsky,
Supervisor



Website: www.levinefuneral.com • E-Mail: info@levinefuneral.com

September 2014 Elul/Tishri 5774/5775

Sun	Mon	Tue	Wed	Thu	Fri	Sat
	6 Elul <i>Temple Closed in honor of Labor Day</i>	1 7 Elul 5:30 PM B'nai Mitzvah Class 7:30 PM Choir Rehearsal	2 8 Elul 9:30 AM Meditation 10:30 AM Tanakh Study 4 PM B'nai Mitzvah Class	3 9 Elul 9 AM Preschool Meet the Teachers 10:30 AM Hilltoppers Board Meeting 7:30 PM Sisterhood Board Meeting	4 10 Elul 9 AM Preschool : Opening Day 8 PM Prospective Member Shabbat Service	5 11 Elul <i>Torah Portion: Ki Tetze</i> 
12 Elul 9:30 AM <i>Rimon</i> : Opening Day 9:30 AM <i>Rimon</i> Parent Brunch 7 PM Executive Committee Meeting	7 13 Elul 5:30 PM <i>Rimon</i> Hebrew 6:30 PM Academy, Pizza 7 PM Academy / Confirmation	8 14 Elul 4 PM <i>Rimon</i> Hebrew 5:30 PM B'nai Mitzvah Class 7:30 PM Choir Rehearsal	9 15 Elul 9:30 AM Meditation 10:30 AM Tanakh Study 4 PM B'nai Mitzvah Class	10 16 Elul 7:30 PM Sisterhood Book Club	11 17 Elul 5 PM Preschool Welcomes Cantor Marx 5:30 PM Tot Shabbat 6 PM Potluck Dinner 7 PM Prospective Member Shabbat Service (please note new times)	12 18 Elul 10:30 AM Bar Mitzvah: Ezra Frank <i>Torah Portion: Ki Tavo</i> 
19 Elul 9:30 AM <i>Rimon</i> 9:30 AM <i>Gesherim</i> Brunch 1-3 PM Gardening	14 20 Elul 5:30 PM <i>Rimon</i> Hebrew 6:30 PM Academy, Pizza 7 PM Academy / Confirmation	15 21 Elul 4 PM <i>Rimon</i> Hebrew 5:30 PM B'nai Mitzvah Class 7:30 PM Choir Rehearsal	16 22 Elul 9:30 AM Meditation 10:30 AM Tanakh Study 4 PM B'nai Mitzvah Class 6:30 PM Women's Spirituality Meditation 7:30 PM Women's Spirituality 7:30 PM General Board Mtg.	17 23 Elul 7:30 PM Hilltoppers Event	18 24 Elul 8 PM Shabbat Service	19 25 Elul 10:30 AM Bat Mitzvah: Kasey Lukens 7:30 PM S'lichot Program 9:30 PM S'lichot Service <i>S'lichot</i> <i>Torah Portion: Nitzavim/Vayelech</i> 
26 Elul 9:30 AM <i>Rimon</i> 9:30 AM Conversations With Men	21 27 Elul 5:30 PM <i>Rimon</i> Hebrew 6:30 PM Academy, Pizza 7 PM Academy / Confirmation	22 28 Elul 1:15 PM Hilltoppers Book Club 4 PM <i>Rimon</i> Hebrew 5:30 PM B'nai Mitzvah Class 7:30 PM Choir Rehearsal <i>Fall Begins</i> 	23 29 Elul 1 PM Temple Office Closes 8 PM Erev Rosh Hashanah Services <i>Erev Rosh Hashanah</i>	24 1 Tishri 9 AM Tot Service 10:30 AM Adult Service 1:30 PM Family Service 3 PM Tashlich <i>Rosh Hashanah</i>	25 2 Tishri 7 PM Meditation 8 PM Shabbat Service Shabbat Shuvah 	26 3 Tishri <i>Torah Portion: Ha'azinu</i> 
4 Tishri 9:30 AM <i>Rimon</i>	28 5 Tishri 5:30 PM <i>Rimon</i> Hebrew 6:30 PM Academy, Pizza 7 PM Academy / Confirmation	29 6 Tishri 4 PM <i>Rimon</i> Hebrew 5:30 PM B'nai Mitzvah Class 7:30 PM Choir Rehearsal	30 <i>Looking Ahead</i> 10/3: Kol Nidre 10/4: Yom Kippur 10/8: Sukkot 10/10: Shabbat/Sukkot 10/12: Dinner w/the Family Management Center 10/15: Simchat Torah & Consecration 11/7-9: <i>Shir Chadash</i> : Cantor's Installation Weekend	 Spread The Word! We want our community To continue growing Please encourage Members to Join Our Community!		

Introducing Shabbat Suites at Lankenau.

————— OPENING OCTOBER 2014 —————

Lankenau Medical Center is pleased to offer Shabbat Suites for the Sabbath-observant families of our patients. The suites include:

- Private bedrooms with two twin-sized beds
- Restroom facilities
- Communal kosher kitchen and stocked pantry, available 24/7
- Communal lounge and prayer room

All room functions are Shabbat compliant. For more information about Shabbat Suites at Lankenau, please call 484.476.2020.



Lankenau Medical Center
Main Line Health

100 East Lancaster Avenue | Wynnewood, PA 19096
mainlinehealth.org/lankenau



NEW MEMBERS ALWAYS WELCOME!

***PROSPECTIVE MEMBER OPEN HOUSE:
SEPTEMBER 5 AND 12***

INVITE YOUR FRIENDS TO COME AND JOIN US!

LIKE US ON FACEBOOK!

Search for "Temple Sholom in
Broomall"
or follow this link:

[https://www.facebook.com/
TempleSholomInBroomall](https://www.facebook.com/TempleSholomInBroomall)

Then click 'Like'!



***TUNE IN FOR
SHABBAT SERVICES LIVE****

TEMPLE-SHOLOM.ORG

VISIT OUR WEBSITE!

*Note: Not all Services are
broadcast. Please check our
website for dates and times.



Temple Sholom in Broomall

55 North Church Lane, Broomall, PA 19008
www.temple-sholom.org
Rabbi Peter C. Rigler
Cantor Jamie M. Marx
Rabbi Emeritus Mayer Selekman
Cantor Emerita Patrice Kaplan



UNION FOR **MEMBER**
REFORM JUDAISM

האיחוד ליהדות רפורמית

SERVING REFORM CONGREGATIONS IN NORTH AMERICA