



***SEPHARAD  
REVEALED: A  
SURVEY OF THE  
JEWS OF SPAIN WITH  
RABBI DR.***

***JONATHAN ROSENBAUM***

**Sundays  
November 4, 11 and 18  
at 9:30 AM**

Through a series of lectures and discussions aided by graphics, outlines, and suggested readings, participants will examine broadly the history, culture, and vast contributions of Spanish Jewry both to Judaism and to Spain. The course will introduce participants to Spain's geography, historical sites, and the enduring cultural impact that its Jewish inhabitants have had on the country and society.

For those participating in Temple Sholom's forthcoming April 2013 trip to Spain, the trip's itinerary will be utilized as a roadmap to Spanish Jewish history and culture and as a route to familiarizing participants with the significance of the sites they will visit and the people they will meet.

Session 1: From the Earliest Settlements to the Golden Age under Muslims

Session 2: From the Reconquista through the Inquisition

Session 3: From Crypto-Jews to the Modern Return

No previous knowledge of Spanish Jewry is necessary. Jonathan Rosenbaum is President Emeritus and Professor Emeritus of Jewish Studies at Gratz College and a Visiting Scholar at the University of Pennsylvania. A prominent scholar, rabbi, and administrator, Rabbi Dr. Rosenbaum served for eleven years (1998-2009) at the helm of Gratz College, the oldest nondenominational college of Jewish studies in North America (founded in 1895) and the first Jewish institution of higher learning to admit women on a par with men.

***INTERFAITH***



***TUESDAY,  
NOVEMBER 20 7:30 PM  
at Temple Sholom in Broomall***

***Music by the Interfaith  
Community Choir***

You are invited to bring new or clean, gently used hats, gloves and scarves to the service to share with our homeless neighbors in Delaware County. We will also receive offerings of cash or checks made out to the sponsors "Marple Newtown Clergy Association" to provide Thanksgiving Dinner for homeless people in our community.

***WHAT'S INSIDE***

- |                            |                               |
|----------------------------|-------------------------------|
| 2 Rabbi's Message          | 20 Hospice Volunteers         |
| CCAR Press Release         | Sisterhood Welcome Dinner     |
| 3 Cantor's Message         | 21 Sisterhood Book Club       |
| Cantor Kates' Recital      | Discussion Group              |
| 4 News from the Office     | Sunday Café                   |
| Bereavement Group          | OBOJC                         |
| 5 November Onegs           | 22 Hilltoppers                |
| Mitzvah Meals              | JLL                           |
| Jewish Meditation          | 23 Hilltoppers Theater Outing |
| Tanakh Study               | 24 Holiday Gift Fair          |
| 6 Board Greeting           | 25 Conversations with Men     |
| 7 Mazel Tov                | Women's Spirituality          |
| New Members                | 26 Havdalah in the Home       |
| 8 Mitzvah Core Update      | 27 Hanukkah Dinner            |
| 10 Sisterhood News         | 28 Happiness & Memorial       |
| 11 Wharton Esherick Museum | Cards                         |
| 12 Jacob International     | ToaSTY's Tidings              |
| 13 Interfaithways Shabbat  | 29 Staff & Board              |
| 14 November B'nai Mitzvah  | JNF Trees                     |
| Brotherhood                | 30 Scholar-in-Residence       |
| 15 Religious & Hebrew      | The Gift Garden               |
| School News                | 31 Tzedakah                   |
| 16 Preschool               | 32 Temple Funds               |
| Mahjong                    | Contribution Form             |
| 17 We Sing Shabbat         | 33 November Yahrzeits         |
| 18-19 Lori's Bash Recap    | 35 November Calendar          |



## ***FROM THE DESK OF RABBI RIGLER***

At Yom Kippur we introduced our new Mitzvah Core program. I shared the words of Rabbi Eric Yoffie, the past president of our Reform movement who wrote the following...

*"Reform Jews are committed to social justice. Even as Reform Jews embrace ritual, prayer, and ceremony more than ever, we continue to see social justice as the jewel in the Reform Jewish crown. Like the prophets, we never forget that God is concerned about the everyday and that the blights of society take precedence over the mysteries of heaven. A Reform synagogue that does not alleviate the anguish of the suffering is a contradiction in terms."*

And I asked, "Are we, Temple Sholom, doing enough?"

I was overwhelmed with the response from the congregation! Several hundred members returned the Mitzvah Core pledge cards with a renewed sense of mission. From the moment I left the *bimah* after the service I have felt a great energy. We have been looking for ways to get involved and engaged. As we served an incredible dinner during Sukkot to our friends from a local shelter, I was really taken with what we accomplished as a

community when we come together. The guests loved the dinner and we raised two thousand dollars for the shelter system. We learned that what the shelter needs most are gift certificates to Target to buy shoes. I was surprised to learn from the director of the shelter that acquiring shoes for her residents is the hardest thing. We will be starting a drive for this in the near future.

We have had volunteers serve meals at the Life Center, visit and help congregants and volunteer for future activities. THANK YOU!

We are off to a great start! Please remember my challenge ... not a spark of activity but a movement! What is the next step?

I want to encourage you to go to and sign up on our new website, [mitzvahcore.com](http://mitzvahcore.com), you can choose from wide-ranging individual *mitzvot* or group projects to help others, or, if needed, to request a helping hand. You will be able to learn about our ongoing mitzvah work and the incredible work of our B'nai Mitzvah kids. Share your experiences and the things you do on your own and find inspiration at the heart of our online community. Can we offer our help with work you already do?

~ Rabbi Peter Rigler

## ***RABBI RIGLER RECOGNIZED FOR COMPLETING RABBINIC LEARNING PROGRAM - PRESS RELEASE FROM THE CCAR***

Rabbi Peter Rigler's Advanced Studies focused on Counseling, Worship, Congregation Dynamics, Social Action and Jewish Text Study, among other subjects.

The Central Conference of American Rabbis (CCAR) proudly recognizes Rabbi Peter Rigler of Temple Sholom in Broomall for engaging in rigorous sustained learning by participating in the CCAR's intensive Keter Torah program during the past year.

The program involves in-depth study in Jewish text and Judaic studies; counseling and practical rabbinics; worship, spirituality and ritual; congregation dynamics and leadership; education and social action.

"Rabbi Peter Rigler demonstrated his commitment to his congregation and community and to Jewish life, overall, by devoting the time and intellectual energy to intensive continuing education. Congregation rabbis' lives are filled with multiple demands, around the clock. Those who add continuing learning to their agendas and commitments are exemplary in their dedication to their work and their quest to serve their congregants in the most comprehensive, sensitive way," said Rabbi Steven A. Fox, Chief Executive of the CCAR, the representative organization of nearly 2,000 Reform rabbis, the world's largest group of Jewish clergy.

*Editor's Note: See page 7 to read a copy of the letter sent to Rabbi Rigler from the CCAR.*

## ***CANTOR SHAPIRO'S MESSAGE***



This year at Temple Sholom we have some very interesting events that combine interfaith relations and music. In November, we will be hosting the Interfaith Thanksgiving Service in our sanctuary. During this service we will have the opportunity to create an Interfaith Choir joining our voices with our neighbors from local churches and singing songs of thanks. This interfaith choir is open to all singers. You do not have to be a current choir member in order to participate! When we have the opportunity to come together with members of other faiths and share a prayer experience it can be a truly moving moment. This is only heightened when we join together in song. If you have an interest in joining this group, please contact me! Our rehearsal schedule is not yet firm. The service will be held at Temple Sholom on Tuesday, November 20<sup>th</sup>. We will also be collecting hats and gloves as well as canned goods that evening.

In addition to the wonderful Thanksgiving program, in January we will be previewing the documentary, "To God's Ears." The 42-minute movie is a beautiful combination of Jewish music performance, and the story and history of Jewish-Catholic relations. The history of conflict between Catholics and Jews over thousands of years has eased in present times. A concert of twenty Jewish Cantors (including me!) singing in a Roman Basilica celebrates the progress in this interfaith relationship and the importance of tolerance. "To God's Ears" examines Catholic-Jewish dialogue telling a story of how far we have come. The film will be shown at Temple Sholom on January 27<sup>th</sup> and will be followed by a Q & A session with Jeremy Schneider, the film's director, (via Skype) and me.

I hope you'll have the opportunity to join us at one or both of these events, which celebrate the wonderful diversity in our community

~ *B'shirah* (in song),  
Cantor Shapiro

## ***A SPECIAL INVITATION TO CANTOR FARYN KATES SENIOR RECITAL IN NYC ON NOVEMBER 28***

Cantor Shapiro will be leading a trip to New York to Hebrew Union College, Jewish Institute of Religion to hear our summer intern, Faryn Kates present (sing) her senior recital addressing Hearing Disabilities and the Jewish Community.

Here's the tentative schedule: Meet in Trenton at the Amtrak Train Station for a 9:00 AM departure. Once arriving in New York, we will take local transportation to HUC. Faryn's Recital is at 10:45 AM. Following the recital we will have lunch with Faryn and her guests at HUC. We are scheduled for a 1:00 PM Museum tour at HUC. A second museum stop and dinner will follow. We plan on leaving New York in time to arrive at the Trenton Station at 9:00 PM. Details and pricing estimates are forthcoming. To sign up call Becky in the office at 610-356-5165 or for more information contact Cantor Shapiro at [cantor@temple-sholom.org](mailto:cantor@temple-sholom.org).



## NEWS FROM THE OFFICE



### Director's Corner

Each and every year I find it wonderful that we have both the Jewish holidays and the American secular holidays to enjoy and celebrate. As we now approach

Thanksgiving, it is the perfect time to reflect on all that we are grateful for. From time to time I include a gratitude section in my personal journal and I always like to go back and look at all that I have written down.

Here at Temple Sholom in Broomall I am grateful for our kind and caring community. I am grateful for all that we accomplish as a Temple. I am grateful for our many dedicated and amazing volunteers without whom we would not be able to achieve our goals. I am grateful to the warm and diligent staff with whom I work as a team each and every day. I am grateful that I have the opportunity to be a part of this special and vibrant community.

I will be certain to look back on my words of gratitude here frequently throughout this year, as I am truly very thankful.

Wishing all of us a Thanksgiving filled with moments of gratitude.

~ B'shalom, Abbey Krain,  
[director@temple-sholom.org](mailto:director@temple-sholom.org)

### BEREAVEMENT GROUP

Temple Sholom in Broomall will be hosting a JFCS 5 week bereavement group in November and December sponsored by our Hospice Group. The program is free for Temple Sholom members and \$18 for friends and the greater community. Group size is limited and advance registration is required.

Contact Sandy for more information  
[skcohen@temple-sholom.org](mailto:skcohen@temple-sholom.org) 610-356-5165.



Can you believe it is November and the Holiday Gift Fair is here already? What a busy start to a packed month! Join us on November 4, 11 and 18 when Rabbi Dr. Jonathan Rosenbaum will be giving a talk on the Jews of Spain. Sisterhood is taking a

group off the beaten path to the Wharton Esherick Museum on November 15. Next on November 17, JLL will conduct a special morning Shabbat service in the *Storahtelling* style. November 30 will be a 6:00 PM Kabbalat Shabbat Service featuring Dave Posmontier and our own Temple Sholom musicians.

With the increased dialog about Mitzvahs and our wonderful Mitzvah Core campaign, I just want to remind you that there are many non-traditional ways to get involved.

Here is an example of a different sort of Temple volunteer opportunity:

Often I get calls from congregants who are planning a party and are interested in getting a list of caterers, party servers or other party related vendors. To address this need, I am working on creating a list of caterers, rental companies, entertainment, and other party support companies. I am giving a shout out for help on 2 fronts:

- ⇒ If you've used any vendors, and are pleased with them, please submit their name and contact information and what they do and they will be added to the vendor list.
- ⇒ If you would like to work with me to create and compile this database of vendors in an *Excel* format, your help would be very much appreciated. While this project can be done from the Temple office, it's a perfect project for someone to work on it from home.

If you have any vendor names to submit or if you would like to help with this project, please contact me at [skcohen@temple-sholom.org](mailto:skcohen@temple-sholom.org).

~ B'Shalom, Sandy Cohen



## NOVEMBER ONEG SPONSORS

November 2

Ellen and Mark Sweetman in honor of the Bar Mitzvah of their son Cole

November 9

Amy and David Kleiman in honor of the Bat Mitzvah of their daughter Abigail

A very special thank you to the Temple Sholom Sisterhood for sponsoring the October 12<sup>th</sup> Oneg in honor of Lori Green

A very special thank you to Beverly Cylinder and Annette Goldfuss for sponsoring the Oneg on October 12<sup>th</sup> in honor of their Granddaughter and Great Granddaughter Leah Daniella Magalori's Hebrew Baby Naming

### *CELEBRATING A SIMCHA?*

### *SHARE IT WITH AN ONEG!*

*Honor your loved ones and the Temple by sponsoring an Oneg and sharing your special day with us. A birthday, anniversary, baby naming, or marriage blessing are all perfect occasions. Please contact the Temple office at 610-356-5165 or [info@temple-sholom.org](mailto:info@temple-sholom.org) for details.*

## MITZVAH MEALS



Thanks to the many, many congregants who have already signed up to help with one of the Mitzvah Meals this year. People line up at the Life Center every night of the year for a hot meal prepared and served by volunteers from various community groups and congregations. Temple Sholom's turn comes six times a year. Our Mitzvah Meal dates are always the second Tuesday of every even-numbered month: This year, upcoming meals are Tuesday evenings December 11, February 12, April 9, June 11, and August 13. If you have not already signed up and would still like to assist, please contact Emily Freedman [emily.freedman2@gmail.com](mailto:emily.freedman2@gmail.com) or Howard Cylinder at [hcylander@msn.com](mailto:hcylander@msn.com). We can



always use people to purchase food or supplies, to prepare casseroles or salads, and to help serve. It's a simple but very rewarding way to fulfill the commandment to feed the hungry.

Multiple generations help serve at the Center.

## JEWISH MEDITATION

Jewish Meditation - - - What is it? It can be a time you set aside for quiet reflection, to relax your body/mind. Jewish meditation can come out of a desire to cultivate mindfulness along with particular qualities of wisdom, compassion and kindness from a Jewish perspective. The practice can teach us how to direct our attention into the present moment.

Join our circle when we meet in the Temple Annex on Wednesday mornings from 9:30 AM - 10:15 AM. Enjoy the experience of starting your morning as we practice a quiet, calming time of deeper breathing and chanting as we meditate on Jewish teachings and prayers. You might find that spending this time can make a difference for your entire week.

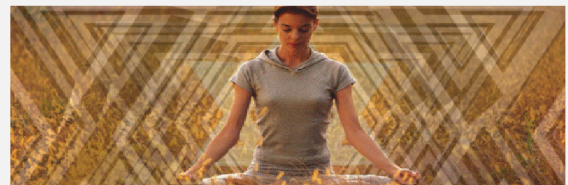
Every Temple member is welcome to join our sessions. Please plan to arrive by 9:25 AM in order for us to begin promptly at 9:30 AM.

## TANAKH STUDY WITH RABBI RIGLER

Wednesdays,

November 7, 14 and 21

at 10:30 AM in the Library



Wednesdays 9:30 - 10:15 AM

November 7 - *Introduction to Jewish Meditation*

November 14 and 21

We look forward to seeing you in the Temple Annex

## ***A WORD FROM THE BOARD OF TRUSTEES***

"Reach for the Stars!" is Temple Sholom's Religious School's motto for this year. Good words to reflect upon, and even more importantly, good words to act upon for this year of 5773. There are so many ways we can reach for the stars in our lives. Perhaps there are as many ways as there are stars in the sky.

We can Reach for the Stars for ourselves - by nurturing our own personal growth and by trying to become the best we can be.

We can Reach for the Stars for others - helping our family, friends, neighbors and strangers. We can Reach for the Stars for God - by becoming a partner with God and making our world a better place.

Many of us make New Year's resolutions. Media suggests that most people's resolutions fall into the category of making goals for ourselves - losing weight, exercising more, eating more nutritiously, organizing our household items, and working harder. All these are important goals. Certainly, we need to take care of our health, and one of the key ways to do this is to eat healthily and exercise regularly. In fact, I would say that if we do not take care of ourselves, it becomes difficult to take care of others and we have trouble reaching for the stars at all! When we take care of ourselves and our health, we start to feel better emotionally and then can fulfill our other goals of organizing, working and caring for others.

In addition to caring for our "physical" selves, we need to care for our "emotional" selves. This may be developing and growing relationships with our spouses, children, parents, and friends. Perhaps we need to distance ourselves from destructive relationships. We may need to give ourselves more "alone" time or time with activities we know give us strength such as walking in nature, reading for pleasure, creating art, or just being with friends and relaxing.

Let's take care of our "cognitive" selves too. Continuing to learn and stimulating our minds with new material is essential to our health. Take advantage of classes at Temple Sholom, or in our community. Join Rabbi Rigler's Jewish Life and Learning program where you will prepare a creative Torah reading experience in the style of "*Storahelling*". Find out what your child is learning in Religious or Hebrew School. Do your own learning on the same topic and discuss it while driving in the car, or while eating a meal. Learn a new skill. In the past

month, I have talked to a man in his 60s who has decided to take up golf (he says he's never played before, but it's never too late to start something fun!), a Sisterhood member who attends a pottery class at one of the local art centers, and a friend of ours from California who is going to Guatemala for a month for Spanish immersion.

And we must never forget to care for our "spiritual" selves; the part of ourselves which is conscious of God or which we perceive as being bigger than ourselves. Everyone has their own unique way to care for this part of themselves. The Women's Spirituality Group has a variety of speakers and topics. Jewish Meditation is a time to practice calming relaxation while meditating on Jewish teachings and prayers. Friday night services and Saturday morning services give us opportunities for communal prayer as well as hearing Cantor Shapiro's music and Rabbi Rigler's wise words. And remember that Saturday morning services are not just a time to celebrate a Bar or Bat Mitzvah. These services are for all of us to attend and enjoy. I attended a Saturday service not too long ago in which I had never met the Bar Mitzvah family. Seeing a 13-year-old and his family who I had no personal acquaintance with was a moving and spiritual experience.

When we reach for the stars for others, we are fulfilling the words of Hillel who said, "*Love your neighbor as yourself. That is the whole Torah. The rest is commentary.*" Through Temple Sholom's new **Mitzvah Core**, we are being given many opportunities to not only lighten up our own lives, but to be a light for others. We have many opportunities to help Temple Sholom. Consider helping with gardening around the Temple, assisting visitors as a volunteer in our office or staffing the Lobby Café on Sundays. Look for ways to help others in our community. There are opportunities to call or visit homebound members and to prepare and deliver meals to those in need. Think about participating in the MS walk, making crafts for charity, or volunteering for Mitzvah Meals.

When we reach for the stars for God, we are inviting God into our lives, making the world a safer, happier, and better place.

So, let's reach for the stars!

~ Laurie Browngoehl

## ***MAZEL TOV TO:***

Beverly Cylinder on the birth of her granddaughter, Leah Daniella Magalori

Cindy & Kevin Nissen, Steve & Ilene Berger, Irv & Betty Berger on the birth of their son, grandson and great-grandson, Micah Nissen

Denise Moser, on the release of her new CD, "*Here Right Now*". It has already received air-play on WXPN! Visit <http://www.denisemosermusic.com/> to follow along on her musical journey, to see her first ever music video, and to receive a free song.

***Let's share our happy occasions, milestones and good news with one another. Please submit your information (anniversary, birth, graduation, new job etc.) by Tuesday of each week to our Temple office: [admin@temple-sholom.org](mailto:admin@temple-sholom.org).***



## ***WELCOME TO OUR NEWEST MEMBERS***

~ The Benardete Family ~  
Ethan, Nicole, Chloe & Jones

~ Sharon Kremens ~

~ The Lerner Family ~  
Eric, Amy, Kyra, & Ari

~ Colleen Rue ~

~ The Schulman Family ~  
David, Nicole & Aaron

~ The Shelanski Family ~  
Samuel, Marie, Sarah & Noah

WE'D LIKE TO WELCOME MORE NEW MEMBERS TO OUR CONGREGATION. WE INVITE YOU TO INVITE YOUR FAMILY AND FRIENDS TO JOIN OUR COMMUNITY. FOR INFORMATION ON MEMBERSHIP, PLEASE CONTACT THE TEMPLE OFFICE AT 610-356-5165 OR EMAIL: [INFO@TEMPLE-SHOLOM.ORG](mailto:INFO@TEMPLE-SHOLOM.ORG).



Tishrei 5773

Dear Peter,

We congratulate you on your commitment to ongoing Jewish learning and professional development through your sustained and intensive learning through the Keter Torah program. As we recently welcomed the year 5773, we note your completion of the Rimmon Torah level of the Keter Torah program.

Kol HaKavod that amidst your very full days replete with multiple demands you have made your continued growth as a rabbi a priority. This dedication to Jewish tradition and to your community brings blessing to all of us.

We are very proud of CCAR's unprecedented rabbinic continuing education program which provides colleagues with resources for responding to the challenges and opportunities for the Reform Rabbinate in the 21st century in many areas, including Jewish text and Judaic studies; counseling and practical rabbinics; worship, spirituality and ritual; congregation dynamics and leadership; education and religious action. While our full schedule of teleconference calls and webinars (and their recordings) provide easy access to you, we are aware that colleagues also choose to make the time to join us at multi-day, in-person seminars around the country.

We are also grateful to our members and other funders, including many foundations, whose contributions support this work.

***Rabbi Steven A. Fox***  
Chief Executive  
Central Conference of American Rabbis

***Rabbi Deborah Prinz***  
Director of Program and Member Services  
Central Conference of American Rabbis



# **TEMPLE SHOLOM MITZVAH CORE IN ACTION** **WE WELCOMED SOME NEW FRIENDS!**

## **Thanks from Event Co-Chairs**

The September 30<sup>th</sup> Mitzvah Meal for the women and children from the Family Management Center in Chester was a huge success. Aside from enjoying an abundance of delicious food, our guests went home with pots of mums, boxes of toiletries, cans of food, goody bags filled with treats and toys, and, of course, several pounds of left-overs. The generosity of the congregation - in contributing time, effort, food, toiletries and donations - was overwhelming. It truly was a group effort. While it is not possible to acknowledge each and every volunteer, contributor and meal participant, please know that it is because of you that this meal was made possible, and we are grateful to have received such kindness and support. We do want to extend a very special "thank you" to Mitch Wolfson, who did a superb job organizing and managing the kitchen. Also special thanks goes to our entertainers who serenaded our guests and Temple members during dinner: Brett & Haley Amdur, the kids in Kol Shalom, Denise Moser and Noah Mendell; and to our sound and stage engineer, Scott Spencer.

It was truly a wonderful meal for our guests - and congregants - and we hope that it is the "first annual" celebration of its kind, with many more to come."

~ Adam and Robin Weinstein





## SIGN UP TODAY!

Temple Shalom in Broomall  
www.temple-shalom.org  
info@temple-shalom.org  
610-356-5165

Temple Shalom  
MITZVAH CORE

☐ I CHOOSE a LIFE LIT BY SHINING STARS. TODAY I JOIN THE MITZVAH CORE.

name \_\_\_\_\_  
address \_\_\_\_\_  
phone \_\_\_\_\_  
best time to call \_\_\_\_\_  
email \_\_\_\_\_

We will contact you to discuss the details of your mitzvah.

☐ I WILL BE "ON CALL" TO HELP TEMPLE MEMBERS.

Check each mitzvah you can help with during the year:

- \_\_\_\_\_ call/visit homebound members
- \_\_\_\_\_ help with errands or driving
- \_\_\_\_\_ assist during Shiva evenings
- \_\_\_\_\_ prepare and deliver meals

☐ I WILL MAKE A DIFFERENCE IN THE LIFE OF OUR TEMPLE.

Do Good with the Sisterhood

- \_\_\_\_\_ participate in the 2013 Spring MS walk
- \_\_\_\_\_ help make crafts for charity on April 25, 2013

Join the Social Action Committee

- \_\_\_\_\_ help shape our Temple's Mitzvah future

Help our Temple

- \_\_\_\_\_ help with light gardening around the Temple
- \_\_\_\_\_ assist visitors as a volunteer in our office
- \_\_\_\_\_ help administer our new website

Serve our Temple as Para Rabbi/Para Cantor

- \_\_\_\_\_ train me, and I will lead Shiva Minyanim

THE HAPPIEST PEOPLE I KNOW DON'T THINK ABOUT BEING HAPPY. THEY THINK ABOUT BEING GOOD PEOPLE AND GOOD NEIGHBORS. HAPPINESS IS JUST SORT OF SNEAKS IN THE BACK WINDOW WHILE THEY'RE BUSY DOING GOOD.

- RABBI HIRSH KUSHNER

**Temple Shalom Mitzvah Meals at the Life Center in Upper Merion**  
Six times a year, we need 30 volunteers to serve 200 hot meals to grateful men and women. Check one or more dates, and choose how you'll help:

**1. Pick a Tuesday**

<b>2012</b>	_____ Oct 9	_____ Dec 11
<b>2013</b>	_____ Feb 12	_____ Apr 9
	_____ June 11	_____ Aug 13

**2. Select your Contribution**

- \_\_\_\_\_ coordinate volunteers
- \_\_\_\_\_ help serve the meal
- prepare...**
- \_\_\_\_\_ a tray of pasta or casserole
- \_\_\_\_\_ a vegetable dish
- \_\_\_\_\_ a BIG salad & dressing
- contribute...**
- \_\_\_\_\_ bread & butter
- \_\_\_\_\_ napkins, cups and plates
- \_\_\_\_\_ dessert and/or fruit
- \_\_\_\_\_ plastic silverware
- \_\_\_\_\_ iced tea or lemonade mix

**DEC 25 - Broad Street Ministry Christmas Dinner, Center City**

Volunteers from Temple Shalom will prepare holiday dishes for hundreds and help prepare, serve and clean up.

- \_\_\_\_\_ coordinate the volunteers
- \_\_\_\_\_ prepare a dish
- \_\_\_\_\_ help with set-up
- \_\_\_\_\_ help serve dinner
- \_\_\_\_\_ help clean-up

## One Volunteer's Thoughts on our September 30<sup>th</sup> Event

Rabbi,

I just wanted to take a moment and tell you what an amazing experience the dinner on Sunday (September 30) for the mothers and children of the shelter in Chester was for Julia and me. The two of us spent the majority of our day at the Temple setting up for this event, and that was tiring, but fun. We took over the responsibility of putting together the gift bags for the moms and the kids, and had a good time sorting the huge amount of toiletries so we could then put an equal amount of items in each bag, and we were both pretty proud of our finished products.

But I was blown away by the event itself. I LOVED that our Temple members needed no encouragement to spread out and make sure that our guests felt welcome. I noticed that every table of guests from the shelter had at least two or three congregants at it. With my dad in the kitchen, I wasn't at all surprised with how good the food was, and with all the volunteers, the food arrived quickly to every table and people checked up on us many times during the meal to make sure we had everything.

After I ate, I circulated to each table to let all the kids know that the craft table was now open, and was almost speechless (and with how much I like to talk, you know this was big) watching the way our congregants were interacting with the other families at their table. They sat down as strangers, but you wouldn't know it to watch.

The absolute best part for me was running the craft table. Our kids mixed with the kids from the shelter and soon everyone was working together. The kids were so appreciative of all the projects and really seemed to enjoy themselves. As the evening progressed, many moms joined us at the table, making picture frames for themselves. They seemed to love the chance to be creative. Some of the moms of little ones told me that the picture/project their child created was the very first one he or she had ever made, and I watched as they took special care to keep it safe so they could hang it up when they got back to the shelter.

I assigned Julia the important job of watching one very active 18 month old boy whose mom needed to rest at her table. She ran after him all around the multi-purpose room. As we drove home that night, she had story after story to tell me about her night with this little boy.

All in all, this was an incredible experience, and I hope there are plans to make this an annual event. I would be more than willing to help again next year, and to do what I can to make sure it can happen every year.

Thank you for everything you did to make this event a reality.

Please share this email with the people who organized this event, as well as whoever came up with the idea in the first place. Thanks!

~ Rachel Thomas

## SISTERHOOD



### Excitement Builds for Sisterhood



Our hardworking President!

We're all getting really excited about the upcoming Holiday Gift Fair on Sunday, November 4<sup>th</sup> from 9:30 AM to 2:00 PM. It seems all our favorite past vendors are returning, and we have several new and intriguing vendors coming for the first time. Finish all of your holiday shopping in one day and one location. You won't want to miss this! For more information about the Gift Fair, see the flyer on

page 24. Many thanks to co-chairs Elizabeth Bloch and Ellen Bedenko and their fabulous committee for all they did to make this years' Holiday Gift Fair such a success!

Just around the corner for Sisterhood is our November 15<sup>th</sup> daytime "field trip" to the Wharton Esherick Museum in nearby Paoli. We will meet at the home of Margaret Husick and carpool up to the museum since parking is at a premium for our scheduled 11:00 AM tour, then we will return to Margaret's home for a delicious lunch. See the flyer on page 11 for details. You won't want to miss this unique experience. We thank Margaret's committee of Stella Maser and Barbara Litt for their help.

Do you like to read? Why not join the Sisterhood Book Club on November 8<sup>th</sup> at 7:30 PM when we'll be discussing "Annabel" by Kathleen Winter? We will meet at a member's home. Please contact Laurie Burstein-Maxwell at [lauriejb@verizon.net](mailto:lauriejb@verizon.net).

Following on the heels of our trip to the Wharton-Esherick Museum is the December 5<sup>th</sup>, 7:30 PM presentation by Jacob International of "Generation to Generation: Breaking the L'Dor Vador of Cancer." This event at our Temple is sponsored by Neiman-Marcus, and therefore there is no cost for admission. A panel of medical experts will educate us on the genetics of cancer, the BRCA 1 Mutation, and much more that every one of us absolutely needs to know. The program is open to the public. Please don't miss this!

There is no better way to celebrate Hanukkah than with your Temple Sholom family! Thanks for the dedication of Chairperson Evalyn Elias with the help

of Melissa Fein and Frances Epstein, Sisterhood is offering a special Hanukkah Dinner on Friday evening, December 14<sup>th</sup>. This year, we have obtained the services of renowned caterer Pumpnick's, and we are proud to say we've lowered our prices from past years! See the flyer on page 27, and prepare to have your mouth water for delicious latkes we promise you'll enjoy!

I want to take a moment to thank the Sisterhood members who turned out in great numbers to participate in the September 30<sup>th</sup> program of Dinner with our Guests in the Sukkah. Thank you, Sisters, for understanding the importance of hands-on mitzvot!

Last month, Sisterhood welcomed both returning and new members to our Welcome Dinner, where nearly 50 members dined and learned together. In addition to our lovely, catered dinner, we were treated to a presentation by Women of Reform Judaism's Immediate Past President Rosanne Selfon, who was introduced by Rabbi Peter Rigler. Our Invocation and Motzi were led by our new Spirituality Chair Nancy Handwerger. Our thanks go to Chairperson Frances Epstein and her committee who included Cindy Meyer, Evalyn Elias, Lauri Sila, and others for our spectacular evening.

Your input is important. Please try to attend our monthly board meetings. Our next meeting will be Thursday, November 1<sup>st</sup> at 7:30 PM in the Temple Library. If you have any questions about the Holiday Bazaar, contact [giftfair@temple-sholom.org](mailto:giftfair@temple-sholom.org). For questions about any of our other events, to become involved in Sisterhood, or Sisterhood in general, please contact [sisterhood@temple-sholom.org](mailto:sisterhood@temple-sholom.org), or call Donna Hendel at 561-445-0021.

~ Donna Hendel, Sisterhood President

Please join the  
Sisterhood of Temple Shalom in Broomall  
on a trip to the

# WHARTON ESHERICK MUSEUM

Thursday, November 15, 2012



**11:00 AM** Meet at Margaret Husick's house  
to carpool to the museum

*(Parking at the museum is limited)*

**LUNCH** At Margaret's house after the tour

**\$18 per person** *(Includes lunch)*

*(Please make your check out to Temple Shalom Sisterhood)*

**RSVP to Margaret before November 1**

**by email:** [mhusick@lawhusick.com](mailto:mhusick@lawhusick.com)

**by phone:** 610-296-8269

Wharton Esherick (1887-1970) was a sculptor who worked primarily in wood, readily extending his unique forms to furniture, furnishings, utensils, interiors and buildings, creating sculptural environments. His motto, "if it isn't fun, it isn't worth doing," is evident in the joyful expression of his work, inviting the eye and the hand. A National Historic Landmark for Architecture, his hilltop studio/residence, with more than 200 of his works on exhibition, has been preserved much as it was when the artist lived and worked there, and is open to the public through guided tours for which reservations are required. *(for more information go to <http://www.whartonesherickmuseum.org/>)*





### ***DID YOU KNOW:***

- ★ 1 out of 40 Ashkenazi Jewish women have a BRCA 1 or BRCA 2 gene mutation which gives them a 33%-50% risk of developing breast cancer by age 50 and 56%-87% by age 70. A simple blood test will tell you if you have a BRCA 1 or BRCA 2 gene mutation.
- ★ 1 out of 40 Ashkenazi Jewish women have a BRCA 1 or BRCA 2 gene mutation which gives them a 27%-44% risk of developing ovarian cancer by age 70. If you have a BRCA gene mutation, you can reduce your risk of developing breast and ovarian cancer up to 96%.
- ★ Just as Ashkenazi women have an increased risk of inheriting a mutated BRCA1 and BRCA2 gene from one or both of their parents, so do Ashkenazi men. These mutations result in a higher risk of developing certain types of cancer, including male breast cancer and prostate cancer.

The Temple Sholom Sisterhood is bringing Jacob International - Jews Against Cancer of the Breast - to Temple Sholom on December 5<sup>th</sup> at 7:30 PM. It is free and open to the public. Come and bring your family and friends ... both men and women are invited and encouraged to come.

## **GENERATION TO GENERATION BREAKING THE L'DOR VADOR OF CANCER Wednesday, December 5th 7:30 PM Temple Sholom in Broomall**

### **SPEAKERS:**

#### **Dr. Debra Copit**

Navigating Your Breast Imaging Experience in 2012  
Director of Breast Imaging at Albert Einstein;  
Asst. Prof. of Radiology -Jefferson Med College

#### **Dr. Lisa Jablon**

From the Results Forward-What Do you Do with  
the Information?

Director of Albert Einstein Breast Health  
Program and Director of Genetic Risk Program

#### **Darnelle Dorsainville**

"The Genetics of Breast Cancer"  
Certified Genetic Counselor; Coordinator of Breast  
Cancer Risk Assessment Program at Albert Einstein

#### **Lori Singer White PhD**

"In My Family Genes"  
Molecular Geneticist and BRCA 1 Mutation Carrier



Sponsored By:



Temple  
Sholom  
in Broomall  
55 North Church Lane  
Broomall, PA 19008

**NO COST FOR ADMISSION**

**For more information contact:**  
**sisterhood@temple-sholom.org**  
**610-356-5165**

**www.jacobintl.org**

# For Jewish Tomorrows



INTERFAITH FAMILY SUPPORT NETWORK



## InterFaith Family Shabbat Weekends

**NOVEMBER 9, 2012**

**6:00 PM TOT SHABBAT**

**6:30 PM COMMUNITY POT LUCK DINNER**

**7:30 PM SHABBAT SERVICE HONORING OUR INTERFAITH FAMILIES**

**Experience the peace and beauty of Shabbat.**

**Enjoy speakers, workshops and other programming at more than 50 congregations throughout the Delaware Valley.**

**Get a taste of the richness and diversity of synagogue life within the Greater Philadelphia Jewish community and meet other interfaith families.**

**TEMPLE SHOLOM IN BROOMALL**

**55 CHURCH LANE, BROOMALL, PA**

**610-356-5165**

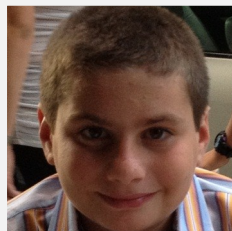
**[WWW.TEMPLE-SHOLOM.ORG](http://WWW.TEMPLE-SHOLOM.ORG)**

**[www.interfaithways.org](http://www.interfaithways.org)**





## NOVEMBER B'NAI MITZVAH



Cole Sweetman, son of Mark and Ellen Sweetman, will be called to the Torah on November 3<sup>rd</sup>. His sister, Sophia and grandparents Herman and Patricia Weiss, and Rollick and Celia Sweetman, along with other friends

and relatives will share in his special day.

A 7<sup>th</sup> grader at Shipley, Cole loves ice hockey, soccer, and playing video games.

Cole describes his Mitzvah Project: My Mitzvah Project involved animals. I helped out at a shelter, I walked dogs with a trainer, I had an animal toy/towel drive and my dog Napoleon became a therapy dog to help seniors and children.

\*\*\*\*\*

Abigail Rose Kleiman, daughter of David and Amy Kleiman, will be called to the Torah on November 10<sup>th</sup>. Brothers Josh and Sam Kleiman, wonderful grandparents, many special aunts, uncles and cousins will be sharing the day with her.

A Springton Lake Middle School, 7<sup>th</sup> grader, Abby plays clarinet in her school's band and Honor's Jazz Band. She plays softball for Media Softball. She is an accomplished writer and

artist, and has won numerous honors for her creative writing. Abby was also the recipient of the Delaware County Excellence in Youth Award in recognition of her "Cookies for a Cure" fundraiser that raised more than \$1000 for the American Cancer Society. Abby loves reading and spending time with her friends and younger brothers.



For her Mitzvah Project Abby worked with the Child Life Department at CHOP to create a "Birthday Closet" that is now stocked with toys, games, sporting equipment and party supplies. Children who are hospitalized at CHOP on their birthdays are able to go to the closet to pick out a toy and party supplies to help them make their birthday more special while in the hospital. Abby contacted more than 50 companies and sporting teams across the country asking for donations for this closet, and she received thousands of dollars' worth of merchandise for the kids at CHOP. Abby also contributed some of the money she received for her Bat Mitzvah in order to buy even more toys and party supplies for the birthday closet.

When asked is there any other information you would like to share? Abby's parents answered "We couldn't be more proud of Abby." And neither can we!

## BROTHERHOOD

On behalf of the Brotherhood, I want to thank all who helped with the fall cleanup around the Temple at the start of the New Year. And thank you goes to our Sukkah builders and take-down crews! We had a great time and created a lovely place for the congregation to celebrate the holiday.



Building the Sukkah.

Look for us at the annual Holiday Bazaar on November 4<sup>th</sup> with our usual yummy fare. We are also hoping to go on a field trip to the Jewish

Museum in Philadelphia on December 2<sup>nd</sup>. Please let me know as soon as possible if you'd like to join the Brotherhood for this wonderful Sunday afternoon excursion.

I want to remind those members of our congregation that have not as yet joined the Brotherhood that it's not too late to support our auxiliary and the congregation. Your support of our organization is very much appreciated. So don't wait any longer, send in your dues today! Contact Brotherhood at the email below for details.

~ Elliot Wunsh, Brotherhood President  
[brotherhood@temple-sholom.org](mailto:brotherhood@temple-sholom.org)



## RELIGIOUS AND HEBREW SCHOOL NOTES



### Learning By Doing!

I am a strong proponent of the idea that one learns by doing. I am not alone in this philosophy. Not only is there a strong movement across the Jewish educational world as well as the secular world to engage students through active experiences, but this idea is not new. The Greek philosopher Aristotle said, "For things we have to learn first before we can do them, we learn best by doing them." (Nichomachean Ethics). Our ancient rabbis, often at odds with the Greek philosophers, agreed with Aristotle on this one!

Turn the ancient calendar ahead to the year 5773. Here we are at Temple Sholom facing the smiling faces of our children. They are ready to learn about the heritage and beauty of our tradition. Are we ready to teach them? The answer is a resounding "yes"! Our faculty has been working hard to learn and incorporate new learning styles and methodologies into our classrooms. Peek into a classroom and you will see our students working in small groups, some on the floor, some at tables, some standing in a circle. No, our teachers have not lost control of their classes. Our students are engaged in "learning by doing" as they explore lessons through active and project-based learning.

I am so proud of each and every one of our faculty members. What I have asked of them is a radical change from the traditional methods of transmitting our Jewish lessons and values. Our teachers now function as facilitators and guides for our students, encouraging them to make choices on which aspects of a topic they choose to explore ... and how to explore that topic.

Learning by Doing is not reserved for our Judaic studies classrooms alone. Our Hebrew classrooms adopt many of these learning techniques as well. "Hebrew Through Movement" is a methodology where students learn Hebrew through Total Physical Response. In a nutshell, students learn Hebrew words, phrases and commands by physically doing them. As of now, we have five Hebrew faculty members who are engaged in a 10-session course on how to facilitate Hebrew Through Movement! It is amazing to see the smiles on our student's faces and hear their laughter as they learn by doing. Statistics nationwide do not paint a wonderful picture of Jewish

### Important Dates in November:

Sunday, November 4

Rabbi's Lecture Series in Sanctuary  
Holiday Bazaar

Sunday, November 11

Rabbi's Lecture Series in Sanctuary  
Rosh Hodesh

Saturday, November 17

4<sup>th</sup> grade Family Dor l'dor - Shabbaton  
5:00 PM – 10:00 PM

Sunday, November 18

Rabbi's Lecture Series in sanctuary  
Gesherim families meet

Monday, November 19

Second trimester of Academy begins

Sunday, November 25

NO SCHOOL – Happy Thanksgiving!

Saturday, December 1

5<sup>th</sup> grade Family Dor l'dor - Shabbaton  
5:00 PM – 10:00 PM

Sunday, December 2

6<sup>th</sup> grade Dor l'dor and Gesherim families  
AM & PM sessions meet 9:30 AM – 11:00 AM

supplementary education. But here at Temple Sholom, we are breaking down barriers, pushing the bar and engaging students and families in Jewish learning. Without the "buy in" of our teachers, our Education Committee, our clergy, and our families... we at Temple Sholom would be one of those "statistics". So when you see one of our teachers thank them for their commitment to learn and grow in order to teach our children. And when you see Rabbi Rigler, Cantor Shapiro, or any member of our Board of Trustees, thank them for their belief and support of our school.

Want to see more about what is happening in our school? Check out our school website, [www.temple-sholom-school.org](http://www.temple-sholom-school.org) to see pictures, postings, blogs and so much more.

~ Lori Green, Education Director



First Graders shake the lulav  
with Miss Adina.

**ETTA NATALIE  
ROSENBLATT PRESCHOOL**



October was a wonderful and busy month for Preschool. As soon as the High Holy Days were over, we celebrated Sukkot. Each class had their own Sukkah, learned songs and helped decorate the synagogue. For Simchat Torah we had a school-wide parade complete with flag waving and marching!

We also had two very special programs in October. Nature Jack teaches hands-on science. We learned all about composting. We also had our first Pajama Havdalah at Temple Sholom. It was so much fun. Everyone came in PJs, we sang songs, did an art project, ate breakfast for dinner and said the prayers of Havdalah! Everyone loved it!

The fast pace of activities and fun in the Preschool will continue in November. We are already getting ready for our Thanksgiving Feast. The whole school is planning a Thanksgiving meal with friendship soup. We are also planning our first "**We Sing Shabbat**" of the year on December 1<sup>st</sup>. It, too, promises to be a special time.

As you can see, Preschool is in high gear. We are growing, learning and becoming a wonderful community every day. There are still a few spots open for new students. Please refer your friends. Their children will have a safe, wonderful and nurturing experience at our school.

~ Best, Miss Liz Sussman, Early Childhood  
Education Director

**The Temple Tidings Publication Guidelines**

**Deadline for the December issue:  
November 5**

The Temple Tidings is published monthly. Material submitted for publication may be edited for style, length and content. Anonymous submissions will not be printed.

Please make submissions by EMAIL if possible. A confirmation message will be sent on receipt of your e-mail or send submissions to the Temple TYPEWRITTEN or CLEARLY PRINTED. Questions?

**[tidings@temple-sholom.org](mailto:tidings@temple-sholom.org)**



**ATTENTION  
PARENTS OF  
TEMPLE SHOLOM  
COLLEGE STUDENTS**

The Sisterhood would love to have the postal address AND email address of your college students for our Hanukkah and Passover packages mailing in the coming year!

Please contact either Meg Yarmel at [mapy4520@gmail.com](mailto:mapy4520@gmail.com) (610-520-0834) or Evie Elias at [twosons4mom@comcast.net](mailto:twosons4mom@comcast.net) (610-449-0357). Get us your information by **November 30<sup>th</sup>** so we can have ample time to send out our Hanukkah goodies. Sisterhood enjoys the opportunity to send your children a special package from our Temple community to celebrate the holidays.



***Come Play Mahjong***

***November 13<sup>th</sup> at 7:30 PM***

***Questions? Contact***

***Brook Braunstein at***

***267-205-6111 [brookem29@aol.com](mailto:brookem29@aol.com)***

***BIMAH BASKETS***



***Festive baskets to decorate the  
Bimah and benefit Temple Sholom's  
Religious School and the Life Center for  
Eastern Delaware County.  
Two Bimah baskets are \$150 (\$75 each)  
and a smaller Oneg Basket is available for  
the Oneg Table for \$45. Interested in  
ordering the baskets?***

**Please contact Stephanie Albero at  
610-459-3645 or email her at  
[stephalbero@yahoo.com](mailto:stephalbero@yahoo.com)**

# WE SING SHABBAT



TEMPLE SHOLOM IN BROOMALL

JOIN MISS LIZ  
AND RABBI STACY RIGLER  
FOR

SHABBAT SONGS

PRAYERS

STORIES

SNACKS

AND FUN WITH FRIENDS

SATURDAY,  
December 1, 2012  
January 26, 2013  
April 27, 2013

10:00 AM

OPEN TO THE  
COMMUNITY



A FUN WAY  
TO  
CELEBRATE



TEMPLE SHOLOM IN BROOMALL  
55 NORTH CHURCH LANE  
BROOMALL, PA 19008  
CONTACT LIZ Z. SUSSMAN, EARLY CHILDHOOD EDUCATION DIRECTOR  
(610)-886-2065  
[preschool@temple-sholom.org](mailto:preschool@temple-sholom.org)





## A Once-in-a-Lifetime Experience ... Again!

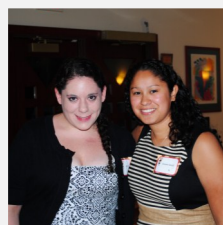
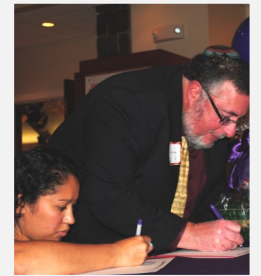
I often am known for telling our students that a Bar or Bat Mitzvah is a "once in a lifetime experience". I go on to tell them that it is the only time in their life when the attention is all on them, and them alone. I was wrong!

My "Bat Mitzvah" at Temple Sholom, celebrating 13 years of serving as Director of Education at Temple Sholom, left me both speechless and humbled. Not one who enjoys the "spotlight" I was overwhelmed by the outpouring of love and support that was bestowed upon me. I am truly blessed by my family, friends, colleagues and the Temple Sholom community. As Jews, we are told that we should recite 100 blessings a day. On October 13, these blessings were triple fold! Thank you to the professional staff, the lay leadership, the faculty and our school families. You make each and every day a day to celebrate!

~ Lori



*Lori's Bat Mitzvah Bash "fulfilled all of the dreams that the Founding Members had when we began the synagogue." Sara Shapiro*



## A letter to Lori from Cantor Emerita Patty Kaplan

Mazel Tov, Lori, on your celebration of 13 years at Temple Sholom! And mazel tov even **more so** to our congregation for our opportunity of enjoying your **extraordinary** gifts for the last 13 years! From the very start, you opened your heart to all of us, **students and staff**. Your profound understanding of people - and your amazing creativity - formed the bedrock of our blossoming school.

It was always a tremendous pleasure to see how you engaged your students, young and old, in **wonderful** learning projects. Every year held new horizons of learning for all of us. And I mean **all** of us, because you always included the entire Temple community in your plans. You taught me by example, how important it is to work in partnerships.

You embody the teaching from Pirkei Avot: "*Make for yourself a teacher, acquire for yourself a friend, and judge everyone favorably.*" Thanks for being my teacher! Thanks for being my friend! And thanks for sharing your profound love of Judaism and our beautiful congregation with all of us! *Chazak, Chazak, vnitchazeik!* May you - and all of us blessed with your gifts - continue to go from strength to strength!

~ With Love, Patty

## LORI'S BAT MITZVAH BASH - WHAT A CELEBRATION



### Candle Sponsors

The Danowitz Family ~ The Gould Family ~  
The Hays Family ~ The Kanes Family ~  
The Rigler Family ~ The Samuels Family ~  
The Shapiro Family ~ The Past Presidents  
of Temple Sholom ~ An Anonymous Family  
~ The Temple Sholom Community ~



### It Took a Village!

*Todah Rabah* to all the individuals who contributed to the success of this event. Our community is appreciative of all their efforts to make Lori's Bat Mitzvah Bash an outstanding success.

~ Rachel Amdur and Mary Ann Gould - Event Chairs

Adult Choir  
Stephanie Albero  
Haley Amdur  
Rachel Amdur  
Steve Berger  
Betsy Blackburn-Goslin  
Elizabeth Bloch  
Robin Briggs  
Abigail Browngohl  
Rachel Broscoe  
Brotherhood  
Bucky Buckwalter  
Eileen Buckwalter  
Sandy Cohen  
Beverly Cylinder  
Michael Danowitz  
Chana Dickter  
Evalyn Elias  
Elyse Endy  
Greg Endy

Susan Edelstein  
Joyce Everett  
Ted Farmer  
Galen Farmer  
Shannon Farmer  
Raina Farmer  
Eric Frank  
Joanna Gould  
Mary Ann Gould  
Caryn Gourley  
Adina Green  
Cantor David Green  
Nancy Hays  
Donna Hendel  
Hilltoppers  
Margaret Husick  
Jennifer Isayev  
Steven Kanes  
Jeff Kaplan  
Nertila Kocibelli

Abbey Krain  
Becky Krangel  
Gloria Kresch  
Alyssa Kress  
Peri Leavitt  
Andi Lieberman  
Cheryl Lynch  
Cindy Meyer  
Lorri Myers  
Past Presidents of  
Temple Sholom  
Linda Phillips  
Maddie Phillips  
Mollie Plotkin  
Rabbi Peter Rigler  
Rosh Hodesh  
Emily Samuels  
Julie Samuels  
Michael Samuels  
Judy Schwartz

Kim Segal  
Larry Segal  
Matt Segal  
Emily Samuels  
Julie Samuels  
Sisterhood  
Cantor Kerith Spencer-Shapiro  
Marla Sones  
Dina Stonberg  
Rachel Thomas  
ToaSTY  
Temple Sholom Board of  
Trustees  
Cindy Verbofsky  
Terri Watson  
Sam Weiner  
Jonah Wilson  
Women's Spirituality  
Elliot Wunsh



## ***BEING A HOSPICE VOLUNTEER***



It's not for money, it's not for fame,  
It's not for any personal gain.  
It's just for love of our fellow man,  
It's just to lend a helping hand.  
It's just to give a bit of one's self,  
That's something you can't buy with wealth.

It's not for medals won with pride,  
It's for the feeling deep inside.  
It's that reward down in your heart,  
It's that feeling that you've been a part  
Of helping others far and near  
That makes YOU be a volunteer!

Our Hospice group of volunteers is always available to our congregants. Please call me, Barbara Smilk 610-353-0840, Amy Berkowitz 610-353-8077, or Rabbi Rigler 610-356-5165, if a need arises. Your privacy is respected.

~ Barbara Smilk, Hospice Chairperson

## ***REMEMBER TEMPLE SHOLOM WHEN YOU SHOP ON***

**[AMAZON.COM](http://www.amazon.com)**

Please remember to make your amazon.com purchases through the Amazon link on the bottom of our website - <http://www.temple-sholom.org> and Temple Sholom will automatically receive a commission based on your purchase. No further steps are necessary.

To make it even easier, click on the icon from the Temple Sholom webpage and save it in your favorites! Thank you for your support.

**amazon.com**



## ***SISTERHOOD'S WELCOME DINNER UPDATE***

Last month, more than 50 Sisterhood women enjoyed a wonderful Welcome Dinner for all new and paid-up members. Our guest speaker, Rosanne Selfon, Immediate Past President of Women of Reform Judaism, was both inspirational and informative in her explanations and anecdotes about the initial creation of the WRJ one hundred years ago. Rosanne was introduced by Rabbi Peter Rigler, who is a personal friend and colleague. Our thanks go to Nancy Handwerger for her most moving invocation and to our fabulous Sisterhood President, Donna Hendel, who led us in the Motzi on her ukulele. A spectacular dinner catered by Class Act Catering was enjoyed by all. Lastly, to my hard-working committee: Harriet Schultz-Rosenblatt, Cindy Meyer and Lauri Sila, I could not have done it without you.

~ Frances Epstein  
Chairperson, Sisterhood Welcome Dinner



## ***HERE IS HOW TO FIND OUR LIVE WEBCAST ....***

Go to our website:  
[www.temple-sholom.org](http://www.temple-sholom.org)  
Click on **"Live Webcast"**  
It's on the home page.  
It's that simple!

*\*Not all services will be webcast.*



## ***SISTERHOOD BOOK CLUB***



(Sisterhood Membership is not required).

September's book club meeting was attended by 8 women. We discussed "*An Available Man*." The discussion led to bonding and friendship and turned out to be a wonderful meeting. We are all looking forward to getting to know each other better through the book club and welcome new members.

The next meeting will be held on November 8 at 7:30 PM at the home of Lisa Warner, 113 Diane Drive, Broomall, 610-353-6385. We will be reading "*Annabel*" a story about a hermaphrodite child, by Kathleen Winter.

Our January 10<sup>th</sup> meeting will take place at Harriet Rosenblatt's home in Broomall. We will read "*Once We Were Brothers*," by Ronald H. Balsom.

We are also scheduled to meet on the following dates (place and book TBD):

March 21, May 9

Questions? Call or email Laurie Burstein-Maxwell at 610-525-8895 or [lauriejb@verizon.net](mailto:lauriejb@verizon.net)



## ***DISCUSSION GROUP***

Get on the email list for updates on the Temple Sholom Discussion Group. For more information or to be put on the discussion group mailing list contact Bob Slater at [bobnmarians@aol.com](mailto:bobnmarians@aol.com).



## ***ONE BOOK ONE JEWISH COMMUNITY (OBOJC) SELECTION***

***"What We Talk About When We Talk About Anne Frank"* A collection of short stories by Nathan Englander**

Nathan Englander, a master of short fiction, writes about West Bank settlers and Orthodox families, the Holocaust and mixed marriages, but not to editorialize about them. His real subjects are memory, obsession, choices, and consequences. "In Nathan Englander's eyes, human beings make choices for admirable and regrettable reasons, with good and bad outcomes. His compelling storytelling, his compassion, and his startling originality make Englander an essential writer. This collection confirms his exceptional talents yet again, and it is not to be missed." Jewish Book Council

"*What We Talk About When We Talk About Anne Frank*" is available in limited copies at the Temple office @ \$15 a copy (list price \$24.95). To purchase the book contact Sandy Cohen [skcohen@temple-sholom.org](mailto:skcohen@temple-sholom.org) or call 610-356-5165.

Save the date: Rabbi Rigler will facilitate a book discussion for "*What We Talk About When We Talk About Anne Frank*" at the Hilltopper's Book Club meeting on February 27, 2013 at 1:15 PM.

## ***LOBBY CAFÉ IS OPEN***



The Temple Sholom Sunday Café is up and running. Instead of just dropping off your children for Sunday School, go park your car and stop in, relax, meet up with new and old friends and have a cup of coffee and a snack. The WiFi is free and the company good. The Café is open from 9:30 AM – 1:00 PM on Sundays when Religious School is in session.

Thanks to Rebecca Parmet and Scott Spencer for making for the first few two weeks a success. We have many folks who have already volunteered and always need more, so if you are interested in baking, or selling (or both) please drop Steve Kanes an email at [sjkanes@mac.com](mailto:sjkanes@mac.com).

## ***THE HILLTOPPERS***

### **Board Meeting:**

On Thursday, November 1<sup>st</sup> at 10:30 AM, the Hilltoppers Board will meet in the Temple Library. Hilltoppers members are invited to attend and meet the group of people who plan our activities. You might want to join us and become involved.

### **General Meeting – Multipurpose Room**

At our regular monthly meeting on Thursday, November 15<sup>th</sup> at 7:30 PM, the Hilltoppers will welcome professional photographer Joel Perlish. His topic will be "Everything About Photography." You will get tips from how to take better pictures and he will answer questions about your digital camera and photography. He promises that if he doesn't know the answer he'll make something up that sounds plausible. Bring your photos for critiquing and questions about your camera.



Joel has lived and worked in Havertown for all of his sixty years. He has been a photographer for over thirty years with mostly word of mouth advertising. He is an avid exercise buff and a 'Ripley Believe-It-or-Not' runner ... all of which you can ask him about and more.

We will conclude our evening with refreshments and time to say "hello." There is no charge for Hilltoppers members and a suggested donation of \$2.00 from non-members.

### **Book Discussion Group – Annex**

Our book group will meet on Thursday, November 29<sup>th</sup> (note change of date) at 1:15 PM, when we will discuss "Faith" by Jennifer Haigh. Ethel Levenson will facilitate.

### **Donations**

Please direct your donations to the Hilltoppers Fund by making checks payable to "Hilltoppers of Temple Shalom" and mailing them to the Temple. Your donations will be listed in *The Temple Tidings*.

**Editor's Note:**  
**Looking for Photographers and**  
**Reporters. Interested?**  
**Let me know!**  
[tidings@temple-shalom.org](mailto:tidings@temple-shalom.org)

## ***JEWISH LIFE AND LEARNING "JLL"***

This year's adult education programming format will prove to be even more exciting and interactive.

Participate in our Storahtelling experience on

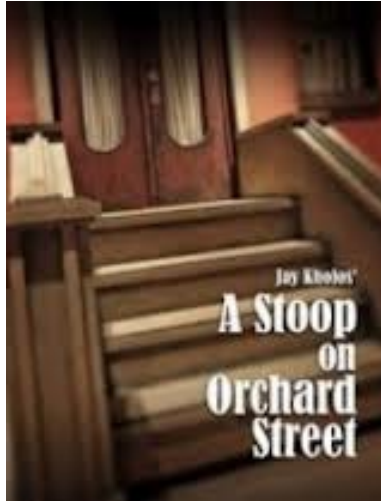
November 14 beginning at 7:30 PM, when interested congregants will meet with Rabbi Rigler to prepare a creative Torah reading experience in the style of "Storahtelling." We will first explore and study the text and then adapt it together to tell the story. This experience is great for those new to Torah study and those who have deep knowledge. All are welcome!

We will use our interpretation as a presentation for the service on [Saturday morning, November 17th](#).

Please take time to attend some of our programs and join the committee! Many thanks to our Committee chairs, Donna Meyer, Louise Schmidt and Arthur Zabell.

For more information contact Sandy Cohen at [skcohen@temple-shalom.org](mailto:skcohen@temple-shalom.org) or Donna Meyer at [denahmeyer@verizon.net](mailto:denahmeyer@verizon.net).

## ***A HILLTOPPERS THEATER OUTING!***



Our Hilltoppers Group wants to attend a November 10<sup>th</sup> matinee showing of “A Stoop on Orchard Street,” soon to be showing at the National Museum of American Jewish History.

*Here’s the story: Jay Kholos’ “A Stoop on Orchard Street” is set in 1910, when the Lomanskys, the Bubbie, and all their stoop friends and neighbors are trying to survive in the teeming tenements of the Lower East Side. If your ancestors didn’t come over on the Mayflower, this may be their story as well. You’ll laugh, you’ll cry and you’ll forever remember this original musical that critics often refer to as, “the day after Fiddler.”*

### **18 original songs! Outstanding cast of 20!**

The matinee begins at 2 PM, and runs for 2 hours, 15 minutes, with an intermission.

If we have a group of 15 or more, we will save \$5.00 each per ticket. We’re also thinking about going out to dinner after the show. It’s easy to take public transportation to the Museum, but we’d also do private car groups leaving from the Temple Shalom parking lot, if people are interested.

Fill out the form below, make your check for \$50 payable to “Hilltoppers,” and mail it to Donna Hendel, 314 Harvard Ave., Broomall, PA 19008. Any questions? Call Donna at 561-445-0021.

*This form must be received by Monday, November 5.*

I’m interested in joining the matinee theatre party on Saturday, Nov. 10:

Name(s): \_\_\_\_\_

Contact Info: \_\_\_\_\_

# of Tickets: \_\_\_\_\_ I/we will need a ride (circle one): Yes No

*You are invited to join and support our Temple!*

**Sisterhood of Temple Sholom in Broomall  
Presents its 2012**

# **Holiday Gift Fair**

**SUNDAY, NOVEMBER 4<sup>th</sup>**

**9:30 am – 2:00 pm**



**Something for everyone**



**Enjoy Crafts for children, Raffle,  
Sisterhood Bake Table  
and light fare presented by  
Temple Sholom Brotherhood!**

For more information call Temple Sholom at 610-356-5165  
Email us: [giftfair@Temple-Sholom.org](mailto:giftfair@Temple-Sholom.org) Visit us: [www.Temple-Sholom.org](http://www.Temple-Sholom.org)



## ***CONVERSATIONS WITH MEN***

Rabbi Meyer Selekman will lead a discussion on "The Future of Reform Judaism?" on Sunday, November 11<sup>th</sup> from 11:00 AM - 12:30 PM. Meet us in Rabbi Rigler's office. Questions? Contact Bob Isaacson at [bob@fullcirclesolutions.net](mailto:bob@fullcirclesolutions.net)

## **RECYCLE PRINTER CARTRIDGES AT TEMPLE SHOLOM**

PLEASE DON'T TOSS OUT THOSE OLD PRINTER CARTRIDGES. RECYCLE THEM! USED INK AND LASER JET PRINTER CARTRIDGES ARE BEING COLLECTED BY SANDY IN THE MAIN OFFICE. PLEASE DROP OFF ANY USED CARTRIDGES AT THE FRONT DESK. THANK YOU.



## ***KEEP THE KNITTERS KNITTING AND TOILETRIES COMING***

Donate wool for the Knit Wits and toiletries for our friends at the Life Care Center. Thank you for your support of these ongoing Mitzvah opportunities. Please call me at 610-353-8077 if you have any questions. ~Amy Berkowitz



## *The Temple Tidings*



Temple Sholom  
in Broomall  
55 North Church Lane  
Broomall, PA 19008  
610-356-5165 Phone  
610-356-6713 Fax  
610-886-2065 Education Office  
[www.temple-sholom.org](http://www.temple-sholom.org)  
[tidings@temple-sholom.org](mailto:tidings@temple-sholom.org)



## ***WOMEN'S SPIRITUALITY***

**6:30 PM - 7:15 PM Sanctuary - Meditation**

**7:30 PM - 9:00 PM Program**

All women from Temple Sholom in Broomall are welcome to join us in the Temple Library on Wednesday, November 28<sup>th</sup> at 7:30 PM when Rabbi Michele Medwin will bring a program on Rabbi Abraham Joshua Heschel's book "*I Asked for Wonder*." Though he descended from a long line of Hassidic rabbis, he believed it was his special vocation to connect two worlds: the mystical world of Hassidic Judaism and the modern world of "man in search of meaning." Heschel was a passionate champion of interfaith dialogue and cooperation. Heschel's wise insights and commentary provide spiritual nourishment. He finds just the right words to startle the mind and delight the heart. His words are at the same time; beautiful, inspiring and clarifying.

Meet with us in the Temple library on Wednesday, November 28<sup>th</sup> at 7:30 PM when we will have a chance to discuss his teachings using quotes from his book. Here is an example of one of his quotes, "*The beginning of our happiness lies in the understanding that life without wonder is not worth living*." Heschel himself is a wonder.

If you were ever "wondering" about Jewish meditation, join us in the Sanctuary at 6:25 PM when one of our members will lead us in a session of meditation. We will then meet Rabbi Michele Medwin in the Temple Library at 7:30 PM. Hope to see you on Wednesday, November 28<sup>th</sup>.

~ Linda Tarash  
[linda.tarash@gmail.com](mailto:linda.tarash@gmail.com)

## SEPTEMBER HAVDALAH

On Saturday, losing no time between Rosh Hashanah and Yom Kippur the Temple Sholom Havdalah group met at the home of John and Barbara Barr. The chant "Ozi" got the spiritual mood going followed by the traditional, Birchot Havdalah, Shavua Tov and Eliyahu. We noted that the Psalmist who penned or chiseled the lines to OZI wrote OUR strength with G-D's song will be our salvation rather than vice versa.

The food for thought rapidly turned to thought of food. There were too many delicious treats to single one out, from mundane to gourmet; someone even brought a bottle of Merlot. A little Jewish, a little spiritual, a lot gastronomical and just plain friendly was the order of the evening. Please look for notices of upcoming meetings in Temple News or if you do not get a copy of this in your email notify Bob at [bobnmarians@aol.com](mailto:bobnmarians@aol.com) and ask to be put on the early notification Havdalah list.



## HAVDALAH IN THE HOME

**Saturday, November 17<sup>th</sup>  
4:30 PM**

The next Havdalah at home will be November 17<sup>th</sup> at 4:30 PM, at the home of Penny Levin and Jeff Toren. Please respond to Bob Slater if you plan to attend and have not yet posted your response and/or request more information by email at [bobnmarians@aol.com](mailto:bobnmarians@aol.com) or call at 610-527-4128.

## SAVE THE DATE TEMPLE SHOLOM TRIVIA NIGHT



**SATURDAY, JANUARY 12, 2013,  
7:00 PM**

Come test your knowledge against other friends as Temple Sholom hosts a Trivia night to benefit the Religious School.

Drinks, snacks, trivia competition, silent auction, and great company!

Volunteers needed for silent auction items and for organizing this amazing event.

Contact:  
Terri Watson [Terri.Watson@verizon.net](mailto:Terri.Watson@verizon.net)  
or Lisa Laciauca [Lisalac@comcast.net](mailto:Lisalac@comcast.net)  
for information or to volunteer.

*Now Collecting donations for the Goods and Service Auction. Contact: Cindy Meyer for details and donations [cfrogs@aol.com](mailto:cfrogs@aol.com) 610-359-1133.*

Appearing at **Zesty's** in Manayunk  
4382 Main Street 215.483.6226  
Parking available across the street

**Singer Arlana Joy Gottlieb**

**with Jazz Guitarist Dick Gratton**



*Join us from*

**6:00 - 9:00 PM**

**Sundays**

Romantic Music  
Delicious Dining  
Beautiful Décor  
Intimate Setting

THE SISTERHOOD OF TEMPLE SHOLOM IN BROOMALL PRESENTS

# Hanukkah Dinner

FRIDAY, DECEMBER 14<sup>TH</sup>



5:30 PM    TOT SHABBAT  
6:15 PM    **HANUKKAH DINNER**  
7:30 PM    SHABBAT HANUKKAH SERVICES

Bring your family Hanukkiah (menorah)  
To light the Hanukkah candles with our Temple Family

Leave the cooking and cleanup to us.  
Family Style Dinner: Catered by Pumpnick's. BYOB!

(new, low 2012 pricing!)  
Adults 13 + Up: \$25  
Children 3 -12: \$10  
Little people 2 and under are free!

---

# Adults Attending \_\_\_\_\_ # Children \_\_\_\_\_ Phone \_\_\_\_\_

Name (please include children's names & ages)

---

E-Mail \_\_\_\_\_

Make checks payable to "Temple Sholom Sisterhood"

Contact [Sisterhood@temple-sholom.org](mailto:Sisterhood@temple-sholom.org) or Donna Hendel 561-445-0021.

55 North Church Lane, Broomall, PA 19008

RSVP by December 7<sup>th</sup> and NO LATER!

Reservations are REQUIRED. Space is LIMITED. Always a sell-out event!

Get your reservation in early!





## HAPPINESS & MEMORIAL CARDS

Did you know that Sisterhood can handle all of your "Hallmark" needs? For \$2.50, including postage, you can send a Happiness/Memorial Card for any occasion, including birthdays, get well, sympathy, etc.

Your support through card purchases helps Sisterhood in their many endeavors. It's so easy – contact Shirley at 610-328-2171 or email her at: [surabassa@aol.com](mailto:surabassa@aol.com).

To: Rabbis Peter & Stacy Rigler & Family  
From: Jim & Cindy Meyer  
The Hilltoppers  
The Sisterhood Board

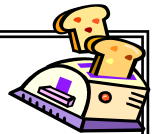
*Condolences on the death of your beloved uncle,  
William Rigler*

To: Hila Shiff  
From: The Sisterhood Board  
*Best wishes for a speedy recovery*

To: Sharon Goldman  
From: The Sisterhood Board  
Donna & Steven Hendel  
*Condolences on the death of your beloved father,  
Aaron Osherow*

To: Andrew & Abbe Goldberg  
From: The Sisterhood Board  
*Mazel Tov on the Bat Mitzvah of your daughter,  
Sydney Goldberg*

To: Mr. Michael & Dr. Janet Rosoff  
From: The Sisterhood Board  
*Mazel Tov on the Bat Mitzvah of your daughter,  
Samantha Rosoff*



## TOASTY'S TIDINGS



ToaSTY is off to a great start this year. Our first event was a bowling night in late September. We had a great turnout and it was a fun evening for everyone who came. Our next event is scheduled for December 8<sup>th</sup>, so look for more information soon.

NFTY-PAR's Fall Kallah is November 16<sup>th</sup> - 18<sup>th</sup> at Camp Harlam. For more information and to register, go to [www.nfty.org/par](http://www.nfty.org/par).

There is still time to join ToaSTY! Any 9<sup>th</sup> - 12<sup>th</sup> grader is eligible to become a member. Dues are \$50 for the year. Checks can be made out to Temple Sholom and left in the front office. If you have any questions or concerns, please email [toasty@temple-sholom.org](mailto:toasty@temple-sholom.org).

Have a great month!

~ Alyssa Kress, ToaSTY Advisor



ToaSTY's High Holy Day Food Drive was a HUGE success. Thanks to all who donated! Pictured: Maddie Phillips, Peri Leavitt, Ariel Bloch, Sam Weiner and Alyssa Kress

## DOING MITZVOT IN THE COMMUNITY?

**PLEASE LET US KNOW SO WE CAN SHARE YOUR STORY WITH THE CONGREGATION! CONTACT THE TEMPLE TIDINGS EDITOR AT**  
**[TIDINGS@TEMPLE-SHOLOM.ORG](mailto:TIDINGS@TEMPLE-SHOLOM.ORG)**

## ***TEMPLE SHOLOM STAFF AND BOARD***

### **Professional Staff**

Rabbi Peter C. Rigler  
Cantor Kerith Spencer-Shapiro  
Rabbi Emeritus Mayer Selekman  
Cantor Emerita Patrice Kaplan  
Abbey Krain, Executive Director  
Lori Green, Education Director  
Liz Z. Sussman, Early Childhood Ed. Dir.  
Sandy Cohen, Community Coordinator

### **Temple Sholom Executive Board (2012-2014)**

Michael Danowitz, President  
Brett Amdur, Executive VP  
Emily Mendell, Senior VP  
Steve Granoff, Treasurer (term ends 2013)  
Jim Meyer, Secretary  
Steve Berger, Member at Large  
Mary Ann Gould, Member at Large

### **Temple Sholom Board of Trustees**

(term ending in 2013)  
Margaret Husick  
Carl Miller  
Alexis Rosenfeld  
Mark Rubinoff  
Mitch Wolfson  
(term ending in 2014)  
Dina Stonberg  
Robin Gall  
Steve Querido  
Matthew Frankel  
Melissa Shusterman  
(alternates for 2012-2013)  
Stephen Kanes  
Laurie Browngoehl  
Carol Herman

### **Auxiliary Representatives**

Elliot Wunsh, Brotherhood  
Cindy Meyer, Hilltoppers  
Donna Hendel, Sisterhood  
Alyssa Kress, Youth Group Advisor

## ***JNF TREES AND WATER FOR ISRAEL***

A quick and easy way to honor and/or remember a friend, relative or event is to have one or more trees planted in Israel. Or a donation may be made to help meet Israel's water needs. In either case a lovely certificate is sent to the honoree and/or family. For details and to make arrangements through the Jewish National Fund, please call Shirley Birenbaum at 610-328-2171, or email [Surabassa@aol.com](mailto:Surabassa@aol.com).



A tree was planted in honor of Zelda Golub's 95<sup>th</sup> birthday by the Williamson Family

A donation was made to the Water Resource Development Fund in honor of Zelda Golub's 95<sup>th</sup> birthday by the Williamson Family

An orchard of ten trees was planted by the Temple Sholom Sisterhood in honor of 13 wonderful years of Lori Green's leadership as Education Director at Temple Sholom in Broomall

A tree was planted by the Leavitt Family, David, Julie & Peri, in memory of Jeffrey Kuerschner, beloved brother of Stephen Kuerschner

A tree was planted by the Leavitt Family, David, Julie & Peri, in memory of Jeffrey Kuerschner, beloved husband of Terri Kuerschner

## ***SCHOLAR-IN-RESIDENCE*** ***SAVE THE DATE!***

Scholar-in-Residence is pleased to announce that our 2013 Scholar will be Danny Siegel.

Danny Siegel is a well-known author, poet and a maven on doing mitzvot, tzedakah and tikkun olam (repairing the world). He has touched the lives of countless individuals and communities for over 30 years and founded the non-profit mitzvah organization. Danny is inspirational for all ages.

Save the Date: March 15 - 17, and will include events and programs on all three days.



<http://www.rakdan.com>

**RAK-DAN** Entertainment  
Attn: Don Schillinger  
P.O. Box 21768  
Philadelphia, PA 19146  
215-760-6800  
donrakdan@gmail.com  
rakdan@comcast.net

Professional DJ services for formal receptions, Bar/Bat Mitzvahs, weddings, and special events. Expertise in American, Israeli, Chassidic, Spanish, and music from around the world. Dance motivators, party giveaways, pro DJ light show, uplighting, and party planning. High quality Israeli Dance instruction for children, teens, and adults.

## ***THE GIFT GARDEN OFFERS*** ***INVITATIONS***

- ✧ **NEWBORN ANNOUNCEMENTS**
- ✧ **STATIONERY**
- ✧ **BAR/BAT MITZVAH**
- ✧ **WEDDING**
- ✧ **SAVE THE DATE**

Contact Nancy at 610-325-4297 or  
[haz@comcast.net](mailto:haz@comcast.net) for more information

## ***THE GIFT GARDEN***

Shop Shalom! Come into The Gift Garden and see all the wonderful items for sale!

We are always looking for volunteers ... looking for something to do while waiting for your children, want to do a mitzvah, meet new people or just want to be there for our kids so they can get their snacks ... call Linda Phillips at 484-431-3724 or Elyse Endy at 610-296-0496 or [elyseendy@gmail.com](mailto:elyseendy@gmail.com).

BONUS: ALL VOLUNTEERS GET 20% OFF EVERYTHING ANYTIME (EXCEPT OUR EXCLUSIONS).

### ***FEATURED ITEMS IN NOVEMBER:*** ***JEWELRY***

Look for our sidewalk sales throughout the year on Sundays.

Visa and Mastercard accepted for purchases over \$25.00.

If you don't see something you like, please ask!

### ***GIFT GARDEN HOURS\****

**SUNDAYS, 9:30 AM - 1:00 PM**

**MONDAYS, 6:00 - 8:30 PM**

**TUESDAYS, 4:00 - 5:30 PM/7:00 - 7:30 PM**

**FRIDAYS, 9:00 - 9:45 AM**

### ***AND NEW THIS YEAR***

***Whenever there is a Program  
or Event \*\****

*(not including those on Shabbat)*

\*HOURS ARE SUBJECT TO CHANGE.

PLEASE CHECK THE GIFT GARDEN DOOR FOR UPDATES

\*\*AS LONG AS WE CAN FIND THE VOLUNTEERS TO STAFF THE  
STORE DURING THOSE TIMES





## ***TZEDAKAH***

### **Cantor's Discretionary Fund**

In memory of Marvin Starr  
Leonard & Bonnie Starr  
In appreciation of Cantor Kerith  
Spencer-Shapiro on the occasion of  
Sydney's Bat Mitzvah  
Andrew & Abbe Goldberg

### **Financial Assistance Appeal**

In memory of Philip & Evelyn  
Gerber  
In memory of Sarah Levin  
In memory of William Rigler  
Larry & Connie Levin  
In memory of Dora Bush  
Mitchell & Trudy Itzko  
In memory of Joe Joseph  
Steven & Ruth Gail Cohen

### **General Fund**

In memory of Rosee Rose  
Judy Saltz  
In memory of Martin I. Munin  
Norma Munin  
In memory of Albert Kaplan  
Natalie Silverman

### **Hilltoppers Fund**

In memory of Barry Kearsley  
Serene Friedman  
In memory of Reuben & Lottie  
Levenson  
Ethel Levenson  
In memory of Peter B. Schmidt  
Louise Schmidt  
In memory of Ben Shusterman  
Serene Friedman  
In memory of William Rigler  
Hilltoppers

### **Hospice and Healing Fund**

In memory of Benjamin  
Shusterman  
In memory of William Rigler  
David & Barbara Smilk  
In memory of Jack Friedman  
Barry & Carol Jacobs  
In memory of Frank Wolin  
Robert & Leslie Neff  
In memory of Ida Rutman  
Michael & Lisa Pottiger

### **Howard Weiner Library Fund**

In memory of Susan Samans  
Robinson  
Debby Samans

### **Preschool Fund**

In memory of George Mayer  
Joe & Staycee Liberatore

### **Rabbi's Discretionary Fund**

In memory of William Rigler  
Art Zabell & Louise Schmidt  
Jay & Nancy Handwerger  
Renee Campion  
In memory of Sara Bloch  
Yaacov & Elizabeth Bloch  
In memory of Selma Lipson  
Marcia Littell  
In memory of Harold Disman  
Ira & Sue Disman  
In memory of Alex & Marilyn Kaplan  
Ron & Carol Ruark  
In memory of Diane Goldstein  
Harvey Soifer  
In memory of Carl Pinsk  
Allen & Ardeth Pinsk  
In memory of Stella Stern  
Rita Way  
In appreciation of Rabbi Peter  
Rigler on the occasion of Sydney's  
Bat Mitzvah  
Andrew & Abbe Goldberg  
In appreciation of Rabbi Peter  
Rigler  
Hadar & Eli Kramer

### **Religious School Education Fund**

In memory of Daniel Haywood  
Micah & Wendy Haywood  
In memory of Anita Rice  
Andrew & Linda Borson  
In memory of Lee Schultz  
In memory of Marcus Eisner  
Harriet Schultz-Rosenblatt

### **Sanctuary Book Fund**

In memory of Leonard Bleiman  
Jeffry & Harriet Bleiman

### **Selekman Jewish Leadership Fund**

In memory of Sarah C. Wilson  
Carl & Susan Miller

### **Technology Fund**

In appreciation of Temple Sholom  
in Broomall  
Joyce Cohen

### **Tzedakah Fund**

In memory of Lillian Tintner  
Eleanor Segal  
In memory of Morris Lipshitz  
Thelma Greenbaum  
In memory of Leonard Krisel  
Donald & Cheryl Lynch  
In memory of Lloyd Levin  
Paul & Gina Levin  
In memory of Anna Persky  
Adele Persky

***PLEASE SUPPORT TEMPLE  
SHOLOM BY DONATING TO OUR  
VARIOUS FUNDS.  
SEE PAGE 32 FOR LIST OF FUNDS  
AND THE CONTRIBUTION FORM***

***NEED HELP? WE'RE  
HERE!***

### **THE MITZVAH CORE**

Please let us know if you are  
aware of someone ....

- ★ Entering the hospital
- ★ With a new baby
- ★ Death in the family
- ★ Shut-in
- ★ Other

We want to help! Working together  
we are truly a caring community.

PLEASE CALL THE TEMPLE  
OFFICE  
AT 610-356-5165

I wish to make a donation to the \_\_\_\_\_ Fund in the amount of \$ \_\_\_\_\_

The contribution is in (check one): \_\_\_\_\_ memory \_\_\_\_\_ honor \_\_\_\_\_ appreciation of: \_\_\_\_\_

The card should read: \_\_\_\_\_

This gift of tzedakah is from: \_\_\_\_\_

Address: \_\_\_\_\_

Area/Phone: \_\_\_\_\_

Please send this form with your check made payable to:  
 TEMPLE SHOLOM, 55 North Church Lane, Broomall, PA 19008

Are You Looking for a

## JOB or NEW CAREER?

JEVS Career Strategies provides individualized services to help you find a job or career that best suits you.

- Individual career consulting
- Career assessment
- Job search assistance



Career Strategies

Call 215.854.1874 today!  
[www.jevshumanservices.org](http://www.jevshumanservices.org)

JEVS Human Services partners with the Jewish Federation of Greater Philadelphia

## Advertising in the Temple Tidings

Advertising contracts are arranged and paid IN ADVANCE of publication through the Temple Office.

Call Elyse at 610-356-5165 or email her at: [tidings@temple-sholom.org](mailto:tidings@temple-sholom.org). Advertising rates are posted on our website at: [www.temple-sholom.org/aboutus/newsletter/](http://www.temple-sholom.org/aboutus/newsletter/)

**SHOP SHOLOM**  
**Grocery Shopping**  
**and Gift Cards**

Contact Nertila in the School Office at 610-886-2065 or [schooladmin@temple-sholom.org](mailto:schooladmin@temple-sholom.org)

## TEMPLE FUNDS

### Cantor's Discretionary Fund

Contributions to this fund will be used at the discretion of our Cantor.

### Financial Assistance

To offset the reduction of revenue incurred when a Temple Sholom family cannot afford to pay their total dues. Contributions go directly into the General Fund.

### General Fund

To support Temple operations.

### Hospice and Healing Fund

To assist the Hospice Committee in carrying out its support programs.

### Howard Weiner Library Fund

An endowment fund in which the interest is used to purchase books and supplies for the library.

### Jubilee Endowment Fund

To secure the future of Temple Sholom in Broomall.

### Judith Bernick Music Fund

An endowment fund in which the interest may be used for the music program.

### Marlene B. Kleinman Campership Fund

Interest is used to send students to a URJ camp each year.

### Mayer Selekan Jewish Leadership Fund

To provide grants for graduate study toward becoming a Jewish professional.

### Preschool Fund

To support the programs of the Etta Natalie Rosenblatt Preschool.

### Preschool Music Fund

Established by the Confirmation Class of 2008 to support Preschool Music Programs.

### Rabbi's Discretionary Fund

Contributions to this fund will be used at the discretion of our Rabbi.

### Religious School Education Fund

To support programs, special events and materials for education at all levels.

Contributions can be earmarked for Women's Spirituality Group studies at the donor's discretion.

### Cantor Kaplan Chair for Sacred Music Endowment

To endow the cantorial position at Temple Sholom, ensuring the future of Jewish music in our congregation.

### Sanctuary Book Fund

To defray the cost of purchasing books for our sanctuary. A book plate is placed in each book indicating the donor's name and the occasion, for a minimum donation of \$36.

### Technology Fund

To maintain and improve all aspects of technology, including our new Webcast used by Temple Sholom.

### Temple Beautiful Fund

To improve and maintain the aesthetics of the Temple, including decor, furnishings, grounds and gardens.

### Tzedakah (Food) Fund

To feed the hungry in our community. Contributions are distributed at the close of each fiscal year to outside charities at the discretion of a special Tzedakah committee.

### Youth Scholarship Fund

To send Temple Sholom Youth Group members to National Federation of Temple Youth (NFTY) sponsored events. Scholarships are awarded based on financial need.

Contributions also may be made directly to the Temple Sholom **Brotherhood, Sisterhood or Hilltoppers.**



## YAHREZEITS IN NOVEMBER ... Z"l

### November 1

Sibyl Cohen  
cousin of Barbara Scheer  
Rosalie Fastman  
mother-in-law of Cynthia Fastman  
Mary Peitzman  
grandmother of William Stone  
grandmother of Wendy Deutsch  
Anna Persky  
mother-in-law of Adele Persky

### November 2

Bernice Freed  
mother of Patrice Kaplan  
Anna Lapides  
mother of Jules Lapides

### November 3

Frances Levy  
mother of Sandra Levy  
grandmother of Kerith  
Spencer-Shapiro  
Hettie Schwartz

### November 4

Chelsea Campbell  
friend of Eileen Buckwalter  
Ruth Finkelman  
grandmother of Stacy Graboyes  
Morey Gordon  
uncle of Ken Lester  
Eleanore Kozloff  
mother of Susan Bilsky  
Louise Levine  
aunt of Edward Kresch

### November 5

Bertha Gartman  
mother of Loraine Bailie  
Hyman Levine  
grandfather of Honore Poch  
Irving Rosen  
father of Beth Cope

### November 7

Nina Joie  
mother of Dan Joie  
Sharon Shulman  
November 8  
Joe Joseph  
father of Ruth Gail Cohen  
Leonard Krisel  
father of Cheryl Lynch  
Lloyd Levin  
father of Paul Levin  
Rose London  
grandmother of Amy Pasnak

### November 9

Lynn Freedman  
mother of Noah Freedman  
Roselyn Rutenberg  
grandmother of Claudia Kane

### November 10

Joseph Cohen  
Daniel Gold  
Louis Wilson  
grandfather of Carl Miller

### November 11

Yetta Berger  
grandmother of Steven Berger  
Sylvia Kramer  
mother of Mark Kramer  
Rusty Lipschutz  
husband Ellen Lipschutz  
Doris Lotsch  
mother of Christine Levin  
Morris Stiefel  
grandfather of Eileen Buckwalter

### November 12

Marianne Berg ElSaleh  
Liza Fayerovich  
grandmother of Ellen Bedenko  
Rose Tobin  
grandmother of Arline Lieberman

### November 13

Stuart Fine  
brother of Judy Newman  
Albert Salkowe  
uncle of Carol Rubin

### November 14

Lou Cylinder  
father of Howard Cylinder  
Menashe Haya  
father of Gloria Kresch  
Ann E. Hersch  
mother of Eileen Wolfson  
grandmother of Rachel Thomas  
grandmother of Jessica Charmont  
Abraham Rosenthal  
brother of Sophie Kean

### November 15

Clara M. Barnes  
grandmother of Michael Kane  
Sylvia Brandt  
Myer Goldfuss  
uncle of Beverly Cylinder  
Harvey Rabin  
father of Debra Abraham

### November 16

David Berger  
grandfather of Steven Berger  
Claire Dinsfriend  
grandmother of Samantha Getz  
Dean Gabbard  
step-father of Elizabeth Shanefield  
Anna Graboyes  
mother-in-law of Betty Graboyes  
Myer Levy  
father of Shirley Plotkin

### November 17

Herbert Mescon  
brother of Helen Rosan  
David Benjamin Rotenberg  
father of Nancy Bloomfield  
Adolphe Stattner  
grandfather of Sherry Halpern  
November 17  
Arthur Abrahams  
grandfather of Emily Moody  
Fannie Aronow  
mother of Pearl Klausner

Leah Chaess  
mother of Harrison Chaess  
Judy Orsatti  
sister-in-law of Laurie Orsatti Bogutz

### November 18

Esther Golub  
Janet Mellman  
friend of Elizabeth Mellman  
mother of Seth Mellman  
mother of Daniel Mellman  
Evelyn Moldawer  
aunt of Lisa Learner-Wagner

Mary Rogosin  
mother of Phoebe Resnick

Frances Marie Sharf  
sister of Norma Munin  
aunt of Robert Munin

Mary Steinbach  
mother of Brook Levin

### November 19

Terry Benjamin  
friend of Barbara Drizin  
Rose Cohen  
mother of Steven Cohen

Theodore Stern  
Joseph Young  
father of Sara Shapiro

### November 20

Samuel Weiss  
father of Kenneth Weiss

### November 21

Louis Glassberg  
Belle Sacks  
mother of Adele Persky  
Ethel Schoenfeld  
mother of Barbara Scheer  
grandmother of Melissa Lowdermilk  
Isadore Sitner  
father of Lenora Margolis

### November 22

David Greenberg  
grandfather of Barbara Barr  
David Meyers  
grandfather of Emily Moody  
Kurt Stern  
grandfather of Emily Moody  
Rose Zaretsky  
grandmother of Susan Friedman  
Barney Salitsky

### November 23

Samuel Eisenstadt  
grandfather of Adina Stonberg  
Clay Sylvis  
father of Frank Sylvis

### November 24

Samuel S. Cohen  
Morton Frankel  
husband of Wendy Frankel  
father of Matthew Frankel  
father of Robbie Bloom

### November 25

Clara Brown  
mother of Geraldine Joseph

### November 26

Irving Mann  
Hannah Pulin  
Edward Schubert  
father of Adam Schubert

### November 27

Fannie Sassler  
mother of Norman Sassler

### November 28

Robert Rigler  
nephew of Saul Rigler

### November 29

Sonia Chinitz  
mother of Florence Bortnickner  
Philip Friedman  
husband of Serene Friedman  
Janet Wolfson  
sister-in-law of Mitchell & Eileen Wolfson

### November 30

Molly Barag  
mother of Donald Barag  
Jerry Davidoff  
friend of Cynthia Meyer  
Ruth Klempner  
mother of Benson Klempner  
Joseph Reswick  
father of Janet Long  
Ethel Stein  
aunt of Trudy Itzko  
Mary Lou Van Rossum  
mother of Eric Van Rossum

## RECENT DEATHS

Dr. Marvin Weiss,  
friend of Nancy, Ron & Elyssa Hays  
Paul Kremens,  
Husband, of Sharon Kremens  
Aaron Osherow,  
father of Sharon Goldman,  
father-in-law of Charles  
Dawn Ferrante,  
friend of the Gould Family  
Ruth Yaskin



# THE TRADITION GROWS

SERVING THE GENERATIONS...



PAST, PRESENT AND FUTURE

*Levine's new memorial chapel, Trevose, PA*

For more than 117 years, the family-owned Joseph Levine & Son Memorial Chapel has maintained a high reputation for quality while serving generations in the Jewish community.

And now the tradition grows with our new Bucks County Memorial Chapel, in addition to our Philadelphia and Main Line locations.

Whether you need pre-arrangement assistance or time-of-need service, you can find it in any of our three convenient locations.

Our knowledge of and experience with Jewish traditions will insure that every detail of a funeral is handled efficiently, sensitively and at a most competitive rate. We are proud to offer the highest quality care.

Remember us. We are available 24 hours a day, seven days a week, to answer your questions and to help.

## JOSEPH *Levine* & SON

*Memorial Chapel*

SERVICE, TRADITION & DIGNITY

2811 West Chester Pike  
Broomall, PA 19008  
(610) 325-2000  
*Elliot J. Rosen,*  
*Supervisor*

7112 North Broad Street  
Philadelphia, PA 19126  
(215) 927-2700 or  
(800) 992-3339  
*Joseph H. Levine,*  
*Supervisor*

4737 Street Road  
Trevose, PA 19053  
(215) 942-4700  
*Samuel Brodsky,*  
*Supervisor*



Website: [www.levinefuneral.com](http://www.levinefuneral.com) • E-Mail: [info@levinefuneral.com](mailto:info@levinefuneral.com)

# November 2012 Heshvan/Kislev 5773

Sun	Mon	Tue	Wed	Thu	Fri	Sat
	Annual Holiday Bazaar Extravaganza Sunday, 11/4 9:30 AM—2 PM (Hanukkah Begins 12/8)	Rabbi Dr. Jonathan Rosenbaum will present 3 different lectures on Sepharad Revealed: A Survey of the Jews of Spain 9:30 AM 11/4, 11/11 & 11/18		16 Heshvan 10:30 AM Hilltoppers Board 7:30 PM Sisterhood Board	17 Heshvan 9:30 AM Preschool Shabbat 8 PM Shabbat Service	18 Heshvan 3 10:30 AM Bar Mitzvah: Cole Sweetman  Torah Portion: Vayera
19 Heshvan 4 9:30 AM Religious School 9:30-2 PM Holiday Gift Fair 9:30 AM Spain Lecture 11 AM Kol Shalom Rehearsal	20 Heshvan 5 6:30 PM Hebrew School 6:30 PM Gesherim Hebrew 7 PM Academy	21 Heshvan 6 4 PM Hebrew School 4 PM Gesherim Hebrew 5:30 PM B'nai Mitzvah Class 7:30 PM Intro to Judaism	22 Heshvan 7 9:30 AM Jewish Meditation 10:30 AM Tanakh Study 4 PM B'nai Mitzvah Class 7:30 PM Executive Board	23 Heshvan 8 7:30 PM Sisterhood Book Club	24 Heshvan 9 9:30 AM Preschool Shabbat 6 PM Tot Shabbat Service 6:30 PM Potluck Dinner 7:30 PM Family Shabbat Service-Honoring our Interfaith Families	25 Heshvan 10 10:30 AM Bat Mitzvah: Abigail Kleiman 10:30 AM Gesherim Bat Mitzvah Experience & Lunch  Torah Portion: Chaye Sarah
26 Heshvan 11 9:30 AM Religious School 9:30 AM Spain Lecture 11 AM Conversations With Men 11 AM Kol Shalom Rehearsal	27 Heshvan 12 6:30 PM Hebrew School 6:30 PM Gesherim Hebrew 7 PM Academy	28 Heshvan 13 4 PM Hebrew School 4 PM Gesherim Hebrew 5:30 PM B'nai Mitzvah Class 6:45 PM Shalom Rav Rehearsal 7:30 PM Choir Rehearsal 7:30 PM Intro to Judaism 7:30 PM Mahjong	29 Heshvan 14 9:30 AM Jewish Meditation 10:30 AM Tanakh Study 4 PM B'nai Mitzvah Class 7:30 PM JLL session #3	1 Kislev 11 AM Sisterhood Outing - Wharton Escherick Museum 7:30 PM Hilltoppers Program	2 Kislev 16 9:30 AM Preschool Shabbat 8 PM Shabbat Service	3 Kislev 17 10:30 AM Storahelling Experience 4:30 Havdalah In the Home 6 PM 4th Grade Dor l Dor/ Shabbaton  Torah Portion: Toldot
4 Kislev 18 9:30 AM Religious School 9:30 AM Spain Lecture 11 AM Kol Shalom Rehearsal 7:30 PM Post Con. Mtg	5 Kislev 19 6:30 PM Hebrew School 6:30 PM Gesherim Hebrew 7 PM Academy	6 Kislev 20 4 PM Hebrew School 4 PM Gesherim Hebrew 5:30 PM B'nai Mitzvah Class 7:30 PM Interfaith Thanksgiving Service 7:30 PM Intro to Judaism	7 Kislev 21 9:30 AM Jewish Meditation 10:30 AM Tanakh Study 4 PM B'nai Mitzvah Class 7:30 PM Women's Spirituality	8 Kislev 22 Office Closed for Thanksgiving	9 Kislev 23 Office Closed for Thanksgiving 8 PM Shabbat Service	10 Kislev 24  Torah Portion: Vayetze
11 Kislev 25 No Religious School	12 Kislev 26 6:30 PM Hebrew School 6:30 PM Gesherim Hebrew 7 PM Academy	13 Kislev 27 4 PM Hebrew School 4 PM Gesherim Hebrew 5:30 PM B'nai Mitzvah Class 7:30 PM Intro to Judaism	14 Kislev 28 Cantor Kates' Senior Recital at HUC 6:30 PM Gratz-Cook with Friends 6:30 PM Women's Spirituality Meditation 7:30 PM Women's Spirituality	15 Kislev 29 1:15 PM Hilltoppers Book Club	16 Kislev 30 6 PM Kabbalat Shabbat Service	

## *Special Dates to Look Forward to in November:*

November 4<sup>th</sup> Holiday Gift Fair

November 4, 11 & 18 Spain Lecture Series

November 17 Storahelling Worship Experience

November 20 Interfaith Thanksgiving Service hosted by Temple Sholom

November 30 Kabbalat Shabbat

### *LIKE US ON FACEBOOK!*

Search for "Temple Sholom in Broomall" or  
follow this link:

<http://www.facebook.com/TempleSholomInBroomall>



Then click 'Like'!

and 'Like' us!



CORRECTIONAL.COM

***NOVEMBER 6TH -  
BECAUSE YOUR  
VOICE COUNTS!***



## **Temple Sholom in Broomall**

55 North Church Lane, Broomall, PA 19008

[www.temple-sholom.org](http://www.temple-sholom.org)

Rabbi Peter C. Rigler

Cantor Kerith Spencer-Shapiro

Rabbi Emeritus Mayer Selekman

Cantor Emerita Patrice Kaplan



UNION FOR **MEMBER**  
REFORM JUDAISM

האיחוד ליהדות רפורמית

SERVING REFORM CONGREGATIONS IN NORTH AMERICA