

Temple Tidings

MARCH 2011 ~ ~ ~ ADAR/NISAN 5771



FIDDLER ON THE ROOF SING-A-LONG

Sing along with the classic 1970's movie! Participate with the audience. Sway your glow sticks and catch candy during the wedding scene. Costumes encouraged! Refreshments will be available to purchase. Free babysitting will be provided with advance registration. Supervised crafts and activities will be onsite.

Sunday, March 6

2:00-5:00 PM

(Doors open at 1:30; movie will start promptly at 2:00)

Media Theatre

104 East State Street, Media PA

Tickets will be available at the door or you can pre-register by contacting:

Temple Sholom in Broomall
55 North Church Lane, Broomall, PA
610-356-5165

Adult \$10 / Children 6 and up \$5
(Kids 5 and under are free)



Purim Celebration An evening for those over 21

Saturday, March 19 at 7:00 PM

Join Rabbi Rigler and Cantor Kaplan for a lively reading of the Megillah with Wine (sample Passover selections), Hamentaschen and Israeli Dancing!

No Charge!*

*Donations of appetizers and desserts for the Oneg that follows the Megillah reading are encouraged and appreciated. BYOB

Please contact Lisa Pottiger at 610-565-2429 or lpottiger@gmail.com to see how you can help!

RSVP by March 14 so we know who and how many people to expect and have enough goodies for everyone.



~Sponsored by the Jewish Life & Learning Committee



Rahel Musleah

AWARD-WINNING JOURNALIST,
AUTHOR, SINGER, STORYTELLER, AND
EDUCATOR

Scholar-in-Residence

March 4 - 6

Come Learn with us as we explore

Jewish Tapestry: Threads of India and Iraq

See page 3 for the Schedule of Weekend Events and Donation Opportunities. For more information about her and what she offers, see her website:

<http://www.rahelsjewishindia.com/> or go to temple-sholom.org for additional information.

She will be speaking on topics related to the history, distinctive liturgy and songs, and more recent experience of the Jews of India, as well as Iraq, in three formal programs, joining Rabbi Rigler in Shabbat services, and presenting to the religious school students.

We look forward to the participation of everyone in the congregation!

Performing Arts at Temple Sholom in Broomall
presents



A Concert Honoring Cantor Patty

Sunday, March 27 at 3:00 pm
featuring the

Temple University String Quintet

Enjoy this beautiful program in honor of Cantor Patty with music of Mozart, Prokofiev, Dittersdorf and Glazunov performed by Temple University faculty members and members of the Philadelphia Orchestra including our own Rob Kesselman.

A dessert reception follows the performance.

Purchase Your Tickets Today!

Tickets \$20 Adults in advance (\$25 at the door)
\$10 Children (18 and under)

To purchase tickets in advance,
mail checks payable to **Temple Sholom in Broomall**
or call the office at 610-356-5165.



Temple Tidings

**Temple Shalom
in Broomall**

**55 North Church Lane
Broomall, PA 19008**

610-356-5165 Phone

610-356-6713 Fax

610-886-2065 Education Office

www.temple-sholom.org

tidings@temple-sholom.org

Rabbi Peter C. Rigler
Cantor Patrice Kaplan
Rabbi Emeritus Mayer Selekman
Abbey Krain, Executive Director
Lori Green, Education Director
Lorri Myers, Early Childhood Education Dir.
Sandy Cohen, Community Coordinator

Temple Shalom Executive Board

Michael Samuels, President
Michael Danowitz, Executive VP
Brett Amdur, Senior VP
Michael Bolotsky, Treasurer
Jim Meyer, Secretary
Steve Berger, Member at Large
Auxiliary Representatives
Mitch Wolfson, Brotherhood
Cindy Meyer, Hilltoppers
Josh Bomze, ToaSTY Advisor

**Snow Emergency - KYW School
Closing #510**

**Temple Shalom is a
NON-SMOKING facility**

Temple Tidings Publication Guidelines

**Deadline for April 2011
issue: March 5, 2011**

The Temple Tidings is published monthly. Material submitted for publication may be edited for style, length and content.

Anonymous submissions will not be printed.

Please make submissions by E-MAIL if possible. A confirmation message will be sent on receipt of your e-mail.

The alternative is to bring or mail submissions to the Temple TYPEWRITTEN or CLEARLY PRINTED. Questions? Call Elyse Endy, Editor 610-296-4096

tidings@temple-sholom.org

Advertising in the Temple Tidings

Advertising contracts are arranged and paid IN ADVANCE of publication through the Temple Office.

Call Elyse at 610-356-5165 or e-mail her at: tidings@temple-sholom.org. Advertising rates are posted on our web site at:

www.temple-sholom.org/aboutus/newsletter/

FROM THE DESK OF RABBI RIGLER



Dear Friends,

"When the Hebrew month Adar (which contains Purim) enters, increase in joy."

Talmud, Taanis 29.

Purim is best celebrated by poking fun at ourselves, dressing in costume, reading the Book of Esther, exchanging gifts of food, giving charity to the poor, and general silliness. The entire month of Adar, and not just Purim itself, is a time for silliness and humor. Purim is the holiday that proves Judaism has a sense of humor.

The story of the events Purim celebrates can be found in the Book of Esther in the Bible. This story relates the downfall of the vicious anti-semitic Haman, prime minister of ancient Persia, who sought to murder all the Jews of that land. In the Diaspora, Purim evolved into an important holiday. Why? Jews were of course often surrounded by anti-semitism and took great joy in a holiday that reminded them that the anti-semites didn't always win. Even though the "Haman" of the book of Esther is likely fictional, there have been too many real-life "Hamans" during the course of Jewish history. History has made the story relevant and compelling, even if it is not true.

The service for Purim is most unusual. Dressing in silly costumes is encouraged. Interrupting the service with noise-making devices is encouraged. The tradition of exchanging gifts of food on Purim is called *mishloach manot*. The food should be ready-to-eat; baked goods are a popular choice. This practice is prescribed in the Book of Esther 9:22.

Purim is a wild and crazy holiday. The rabbis of the Talmud, usually a quite sober group, say to drink so much on Purim that one can't tell the difference between blessing Mordechai (the Jewish hero of the story) and cursing Haman. We Reform Jews believe the rabbis didn't intend anyone to take them seriously about this, but rather were trying to suggest a high level of inane behavior on Purim.

No article on Purim could be considered complete without mentioning THE Purim delicacy, the hamentaschen. The hamentaschen is a triangular cookie, with a poppy seed or fruit filling. At some point, someone got the idea of altering the German name of these cookies, "mohn taschen," "poppy-seed pockets," to "haman taschen," and invented the story that it represents Haman's hat. (Of course, three-pointed hats were all the rage in ancient Persia.)

We hope that you will join us for our Purim celebrations!

Hag Purim Semeach! ~ Rabbi Peter Rigler

COME EXPLORE ISRAEL WITH RABBI RIGLER

The Temple Shalom in Broomall Israel Trip Interest meeting will be held on March 23 at 7:00 PM.

Want to travel to Israel with Rabbi Rigler and explore the land of our people? This unique trip is a way to see the Holy Land as few others have. Please join us for an informational meeting to discuss costs, itinerary and logistics. The scheduled dates for the trip are April 11 - 22, 2012.



NOTES FROM CANTOR KAPLAN



March is Jewish Music Month at Temple Sholom!

We have an extraordinary month of Jewish music coming:

Our first Friday evening service, **March 4**, features our Scholar-in-Residence - Rahel Musleah, who will share beautiful Jewish music from her roots in Calcutta. This is a rare treat to experience the distinctive songs of the Jews of India. Don't miss her presentation of "Jewish Tapestry: Threads of India and Iraq." (8:00 PM)

The second Friday evening, **March 11**, is our fun Family Service, to be led by our Gimel Class and the Kol Sholom Choir. All ages are welcome! (Shabbat worship service begins at 7:30 PM.)

The third Friday night, **March 18**, features our very own Jazz singer Arlana Gottlieb, who will perform with our choir, jazz pianist Dave Posmontier and band. Arlana has put together wonderful jazz settings of our Shabbat service, some of which you'll be able to sing along with. Don't miss this delightful and inspiring Jazz Shabbat! (8:00 PM)

Our last Shabbat of the month is Friday night, **March 25**. Temple Sholom will feature The Westminster Conservatory Collegiate Chorale singing the extraordinarily beautiful Chichester Psalms by Leonard Bernstein. They'll also perform Five Hebrew Love Songs by composer Eric Whitacre. These lovely songs are set to delicate Hebrew poetry "postcards" written by the composer's wife Hila Plitmann, in her native tongue (she was born and raised in Jerusalem). (8:00 PM)

The Westminster Conservatory Collegiate Chorale is conducted by Dr. Frank Abrahams, professor of music education and director of the Center for Critical Pedagogy at Westminster Choir College of Rider University in Princeton, NJ.



RAHEL MUSLEAH **SCHOLAR-IN-RESIDENCE** **SCHEDULE OF EVENTS**

Friday evening March 4

6:30 Potluck dinner

8:00 Shabbat Services

Jewish Calcutta through Music and Memory

Program and Oneg Shabbat are free and open to the public. Oneg sponsored by Jewish Life & Learning Committee.

Saturday morning March 5

10:30 Shabbat Services

Shabbat Customs and Liturgy

12:00 Light Kiddush lunch, Indian cuisine

From Shipwrecks to Maharajas:

The Jews of Bombay and Cochin

Free and open to the public.

Sunday morning March 6

10:00 Brotherhood brunch

The Jews of Iraq:

Antiquity, Inheritance and Escape

Brotherhood Brunch: \$12 per person with reservation; \$15 at the door. Brotherhood members free – reservation required.

12:15 Religious School Program*

Torah and Teapots:

Holiday and Shabbat Customs

*This program is for students in the Temple Sholom Religious School.

SUPPORT THE SCHOLAR-IN-RESIDENCE WEEKEND DONATION OPPORTUNITIES

In order to continue this annual program we ask for your financial support. Thank you.

\$100 or more includes two admissions to Sunday Brunch.

\$50-\$99 includes one admission to Sunday Brunch.

\$1-\$49 Any amount appreciated.

WELCOME ABBEY KRAIN, OUR NEW EXECUTIVE DIRECTOR

At such a cold time of the year, it gives us great pleasure to share with you some warm and exciting news. In late January, we welcomed our new Executive Director, Abbey Krain, to the Temple Sholom family. After an extensive search, the Board of Trustees was thrilled to offer her this position, which is so important to the operations of our synagogue.

Abbey comes to Temple Sholom with wide experience in administration, having previously served as executive director of Temple Beth Zion-Beth Israel in Philadelphia, and most recently as registrar for Camp Galil in Upper Bucks County. Not only does Abbey bring her strong organizational and administrative skills to the job, but she also has an incredible amount of energy and initiative that will serve our congregation well.

As our Executive Director, Abbey will be responsible for the operations of Temple Sholom, from building maintenance to congregant relations to financial activities. She will lead our dedicated front office staff of including Sandy Cohen, Becky Krangel, Betsy Blackburn-Golsin, and will be in the office Monday through Friday from 9:00 AM to 2:00 PM. Abbey can be reached at 610-356-5165 or director@temple-sholom.org.

Please join us in welcoming Abbey to Temple Sholom. Drop her a note or stop by the office to say hello. On behalf of the Board of Trustees and our clergy, we are thrilled that she is here and look forward to her contributions.

~B'Shalom, Temple Sholom Board of Trustees



Abbey Krain

EXECUTIVE DIRECTOR'S CORNER

As your new Executive Director, I am thrilled to be a part of Temple Sholom in Broomall. It is quite apparent that our community is vibrant, warm, welcoming and down to earth. What a wonderful place to experience our Judaism together!

Jewish communal service is my passion, and I have a particular love for temples and synagogues. This is truly the place where we can come together as a community. We build friendships, learn, celebrate and help one another, all in a way that is meaningful and comfortable for each of us.

Whether you are actively involved at Temple, or just come in a few times a year, please know that we are always here for you. It is my pleasure to help us run a welcoming and efficient Temple Sholom community. Please let me know if there is anything we can do for you. You may reach me at director@temple-sholom.org or 610-356-5165 x103.

I look forward to helping our community grow and prosper.

~Warmly, Abbey

A WORD FROM THE BOARD

I am currently reading "*Unbroken*," by Laura Hillenbrand. This astonishing book tells the true story of a man who served as a bomber in the Army Air Force in World War II. This man, who had been an Olympic athlete prior to the war, survived unimaginable hardship and suffering. He was pressed to the limits of his endurance and somehow, in the bleakest of circumstances, retained his sense of humanity, hope and humor.

This story is riveting and horrifying and unimaginable. And it makes me grateful for every convenience and measure of safety and security that I take for granted every day. We are blessed. We are blessed to be safe and secure in our homes. We are blessed to have people we love in our lives. We are blessed to have enough to eat. We are blessed to be able to educate our children. I could go on all day counting my blessings.

What about being blessed? Yes, being blessed by another person. I have three kids, and my youngest will become a Bar Mitzvah this November. I am not a big crier. But, twice before I was moved to tears when, standing on the bima with my child, Cantor Patty sang "Ye'vearech'echa Adonoy ve'yish'merecha...." Why is that? For me, the experience of receiving a blessing, of being the recipient of a request for God's favor and protection, created a distilled sense of connection – to my child and family, to the congregation and to my Jewish heritage. Each time in that moment, I felt part of a larger whole, part of a community that has been pressed to the limits of our endurance and persevered. Our survival as a people is remarkable. Our rituals and customs bind us to each other.

As I wrote this I realized that, come November, Cantor Patty will not be giving the Priestly Benediction when my son becomes a Bar Mitzvah. A new voice will be asking God to bless us, keep us and grant us peace. As much as we will all miss Cantor Patty, there is comfort in knowing that our rituals, customs and connection to each other will remain constant. Our new voice will not be new for long and will quickly become a part of us, just as Cantor Patty has and always will be. We have all been blessed – to have had Cantor Patty with us and to have each other, our Temple Sholom community.

~Leslie Greenfield, Board Member

A LITTLE BIT OF TEMPLE SHOLOM TREE HISTORY

When the founders of Temple Sholom purchased the property at 55 Church Lane, it had an old Victorian house and a beautifully landscaped garden with mature trees and many lovely rare bushes.

The cut red Maple tree and the Magnolia tree are the only two trees left of the original landscaping. The red Maple was used as our logo for many years. It is estimated that the tree could be as old as 100! We used to decorate Sisterhood meetings with the blossoms of the Magnolia tree.

When the buildings were built, the landscape changed and for years we struggled to make the property attractive. Janet Mellman (z"l) and I worked faithfully each spring. We planted flowers. Janet and her husband, Sydney (z"l) constructed the first formal garden in front of the Sanctuary in memory of their daughter.



Upon completion of our third Sanctuary redecoration, a special fund was created to raise monies to re-landscape the grounds. Fortunately, we were able to plant the line of Holly bushes that screen the roof of the nursing home next door.

Through the years volunteers worked quietly and diligently to keep Temple Sholom as beautiful outside as in. Our current gardener, Eileen Wolfson, is to be commended for her loving touch and attention.

~Sara Shapiro, founding Member of Temple Sholom and original member of the Temple Beautiful Committee



WELCOME TO OUR NEWEST MEMBERS:

Richard Rubin and daughter Isabella

Diana (Grace) and Alejandro Gherovici and their daughter Allison

Abbey Krain (and family!)

Be a SUPERHERO! Donate Blood.



**Monday, March 14
2:00 – 8:00 PM**

**American Red Cross Blood Drive at
Temple Sholom in Broomall**

Last March's blood drive was a record breaking blood drive for Temple Sholom. Fifty-seven people came out to donate which allowed for the Red Cross to collect 45 pints. Twenty of those pints came from first time donors. Thanks to the Temple Sholom donors, approximately 130+ transfusions were available to hospital patients in our area.

To register online visit: <http://www.redcross.org/> click on "Give blood" then "make a donation" enter either our zip code = 19008 or sponsor code = 2044

or contact Sandy Cohen
skcohen@Temple-Sholom.org

MAZEL TOV TO:

Pat Rosenblatt on the birth of twin great granddaughters, Bryn and Brooke Burpoe

Cantor Patty and Jeff Kaplan on the engagement of their daughter, Andrea to Mr. Mark Burnett

Lance and Dorothy Berger and Nancy Berger on the birth of their granddaughter and niece, Hailey Rose McGuire

MARCH ONEG SPONSORS

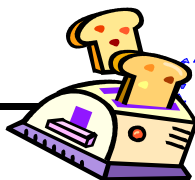
March 4
Jewish Life and Learning Committee, in honor of our Scholar-in-Residence

March 18
Andrew and Andrea Kalan, in honor of the Bar Mitzvah their son, Ryan

March 25
Jonathan and Debra Kaplan, in honor of the Bar Mitzvah their son Michael

Have a special anniversary or birthday coming up? Why not share your simcha with your Temple Sholom family by sponsoring an Oneg! Call the Office at 610-356-5165 for details!

TOASTY'S TIDINGS



Finally we are heading toward Spring and it can't come soon enough! The Youth Group is eager to get back outdoors after a long cold winter. Last month we kept warm at our annual ToaSTY Bowling Night. Fifteen Youth Groupers came to Sproul Lanes to compete for prizes. The big winner of the night was Ian Starr who edged out Dan Abraham ever so slightly to take home the trophy. Congratulations and Yosher Koach to Ian.

Spring is going to be a busy time for ToaSTY so check out our calendar dates for some amazing upcoming events. Here are some events that are coming up soon:

March 5 - NFTY-PAR Elections at Adath Emanuel, Mt. Laurel, NJ

March 6 - ToaSTY Board Meeting 1:00pm Annex

March 12 - Springtime Dinner and Movie Gathering

March 20 - Purim Carnival. We are looking for 8th-12th graders to help with this event, especially would-be artists for face painting

April 12 - Mitzvah Food Project

There are more exciting Spring events scheduled, including a camping trip, tie-dyeing, and a visit to the National Museum of American Jewish History. So come on out and have some fun.

Spring is on the way and the ToaSTY Calendar for the upcoming season is going to be awesome. Stay Tuned!! Please contact ToaSTY@temple-sholom.org or call 609-238-4738 for more information.

~ Josh Bomze, Youth Group Advisor

WE NEED YOUR HELP!

REINVIGORATED MITZVAH CORPS

The Mitzvah Corps:

- ☆ Helps at shiva homes
- ☆ Provides transportation for appointments and shopping
- ☆ Aids new parents and convalescents
- ☆ Helps organize meals for congregants in need

PLEASE CALL Barbara Barr at 484-412-8066
or e-mail bbooker628@aol.com

Sign up for a two-week shift to help your fellow Temple congregants. Your assistance is VERY much appreciated.

I look forward to hearing from the entire congregation!

~Barbara Barr, Coordinator

Academy & ToaSTY Dance A Thon to benefit

**TEMPLE SHOLOM IN BROOMALL AND
THE JEWISH NATIONAL FUND**

**Sponsor a Temple Sholom Student
or ToaSTY Member**

**Saturday, May 7
7:00 PM - 11:00 PM**

The donations will be used to help reseed Israel's forests and at Temple Sholom to make it more environmentally friendly.

Anyone may sponsor as many Temple Sholom Academy members or ToaSTY members for the number of hours they dance.

Music, food, and prizes!

Join us in a night of dancing!
**Dancers with at least three sponsors will
get in free. Otherwise, admission is
\$12.00 per person.**
See you there!

Student Contact: Peri Leavitt -
perileavitt@comcast.net

Parent Contact: Josh Bomze -
toasty@templesholom.org



RSVP by April 10

SAVE THE DATE

A SPECIAL WEEKEND HONORING

***CANTOR PATTY KAPLAN AND
HER FAMILY, JEFF, SARAH & ANDREA
JUNE 3 - 5***

***A TIME OF MUSIC, FUN AND
APPRECIATION***

Help Support the Temple Tidings!

Place Your Ad Here

***Contact Tidings Editor for details
tidings@temple-sholom.org***

PASSOVER WINETASTING



While your kids or grandkids are enjoying the fabulous Purim Carnival on Sunday, March 20, we encourage all adults to come and taste new wines, share your palette choices with others, and order Passover Wine for your family and friends. This makes a wonderful gift when you are sharing Passover at another home.

LOBBY CAFÉ



The Sunday morning Café is doing very well and I want to thank the Rabbi, Cantor, temple families, children, teachers and teacher aides for their kind donations of goodies for the Café. I would also like to thank Mary Ann Gould for her sponsorship and support of the Café and my husband, Larry Segal for all of his support.

I would also like to express my sincere appreciation to the following families who have helped by baking, purchasing or running the cafe thus far this winter:

Debbie Kaplan, Melissa Shuster, Julie Leavitt, Shelby and Matthew Frankel, Brooke Braunstein and Julie Lasorsa, Emily and Dave Mendell, Mollie Plotkin and family, Mike Galvin and his daughter, Jim and Janet Long, Robin Weinstein and Mindy Haenn, Stephanie Albero and Diana (Grace) Gherovici.

I encourage you to volunteer now. You'll have an opportunity to meet new people, and spend an easy relaxing two hours on Sunday morning selling goodies at the Religious School Café. All proceeds benefit the Religious School at Temple Sholom.

Grab a friend, a daughter or son or your husband. E-mail Kim Segal at larkimseg@juno.com or 610-212-2400 or stop by to see me at the Café on Sundays.

~B'Sholom Kim Segal

WOMEN'S SPIRITUALITY



Inviting all women from Temple Sholom to join us on March 23 in the Library at 7:30 PM when our own Education Director, Lori Green will be presenting a program about "Different Strokes for Different Folks." Come and explore how Boomers, Gen Xers, and Millenials interpret and transmit the lessons from our tradition. Along the way we will look at how these interpretations affect synagogue life and the future of synagogue institutions. Don't miss this opportunity for a fun, creative and interesting program presented by Lori Green. See you in the Library!

MALE CONVERSATIONS

Sunday, March 13 at 9:30 AM

***Questions? Contact Bob Isaacson at
bob@fullcirclesolutions.net 610-446-4298***

BIMA AND ONEG BASKETS IT'S A MITZVAH!

Does your child have an upcoming Bar/Bat Mitzvah? Don't forget to order your Bima and Oneg Baskets! Arranged by Sisterhood, these large, beautifully wrapped baskets are an alternative to using flower arrangements on the Oneg table Friday night and on the Bima for the Saturday morning service. These baskets are symbolic of the donation you are making to support two very important areas. Seventy-five percent of the donation will support the homeless shelter at the Life Center of Eastern Delaware County in Upper Darby, PA and the other twenty-five percent will be put towards Temple Sholom's Religious School's programs. A Bima basket is \$75 and an Oneg table basket is \$45. If you are interested, please contact Stephanie Albero at 610-459-3645 or email her at stephalbero@yahoo.com. Information and an order form are included in your child's Bar/Bat Mitzvah packet. For those sponsoring an Oneg in honor of a special simcha, we encourage you to talk to us about an Oneg table basket!



HILLTOPPERS HAPPENINGS

Board Meeting

The Hilltoppers Board will meet on Thursday, March 3, at 10:30 AM, in the Temple Library. These meetings are open to all Hilltoppers members. Drop in and see how the Board works and perhaps become involved.

Monthly Meeting

At our next Monthly Meeting, on Thursday, March 17, at 7:30 PM, and our guest speaker will be Professor Gerry Molyneaux, whose fascinating topic will be, "The City Lights of Charlie Chaplin and Woody Allen."

Professor Molyneaux earned his Masters Degree in English from the University of Notre Dame and his Ph.D in Communication Arts from the University of Wisconsin, Madison. While Chairman of the Communications Department at LaSalle University, he published books and articles on Charlie Chaplin, Jimmy Stewart, Gregory Peck and filmmaker John Sayles. Recently he also published a book on the founding of the Peace Corps.

There will be no charge for admission to this program thanks to the sponsorship of the Pennsylvania Humanities Council. The public is welcome.

Our program will be followed by refreshments and a chance to meet with old friends and new.

Book Discussion Group

Our Book Discussion Group will meet on Thursday, March 31, at 1:15 PM, to review, "The Hotel on the Corner of Bitter and Sweet," by Jamie Ford. Ed Ostrow will facilitate.

Donations

There are many reasons for making donations to the Temple. We are now able to direct our donations to the Hilltoppers fund by making out the checks payable to 'Hilltoppers' and mailing them to the Temple. Your donations will be listed in the Tidings.

Upcoming Event

Our Theater and Dinner Party will take place on Sunday, May 1. For details and reservations please refer to the tear-sheet

Conference and Social Center at St. Luke's



We welcome the opportunity to host your next event.

*Receptions • Showers • Bar/Bat Mitzvahs • Conferences
Training • Sporting events • Meetings • Fundraisers*

*Call today to schedule a tour of our facility!
610-353-1592*

Theater & Dinner Party



Sunday, May 1 at 1:15 PM
Show: Players Club of Swarthmore
Dinner: Towne House, Media

Open to Hilltoppers and Friends
Tickets: \$52.00 per person
(non-refundable)

Includes: show, dinner, tax & gratuity
(Show only: \$22 ~~~ Dinner only: \$30)

**Please fill out the form below, make your check payable to "Hilltoppers," and mail to :
Thelma Greenbaum, 1001 City Avenue,
WB910, Wynnewood, PA 19096.
Questions? Call Thelma at 610-642-8818**

**The deadline for reservations is
Monday, April 18**

For Theater & Dinner Party
May 1 2:00 pm

Name(s): _____

Phone #: _____

Number for both Show & Dinner @ \$52.00: _____

Number for Dinner only @ \$30.00: _____

Number for Show only @ \$22.00: _____

Choice of :

Baked Salmon How many _____

Breast of Chicken How many _____

Veal Parmesan with Spaghetti How many _____

Check enclosed: \$ _____

**The deadline for reservations is
Monday, April 18**



***SAVE THE DATE
FOR A SPECIAL
BIRTHDAY
CELEBRATION***

Hilltoppers Shabbat Service Honors Sara Shapiro's "Special Birthday"

On Friday night, April 15, Hilltoppers members will be participating in a Shabbat Service that both honors its organization and especially Sara Shapiro on the occasion of her 90th birthday. All congregants are encouraged to join the Hilltoppers at this special worship service.

Following the theme of the "One Book/One Jewish Community" selection for this year, "By Fire, By Water," the choir will be singing Sephardic tunes representing the journeys Jews have taken through the ages to achieve freedom. In addition, Hilltoppers members will be sharing some of the Jewish journeys of their lives.

Please join with us that night to support all the organizational members of Temple Sholom, and to wish Sara Shapiro a rousing Happy Birthday!

SINGING IS GOOD FOR YOU!

Many studies done over a number of years have focused on the health benefits of singing and the evidence is overwhelming.

Singing releases endorphins into your system and makes you feel energized and uplifted.

People who sing are healthier than people who don't.

Singing gives the lungs a workout.

Singing tones abdominal and intercostal muscles and the diaphragm and stimulates circulation.

Singing makes us breathe more deeply than many forms of strenuous exercises so we take in more oxygen, improve aerobic capacity and experience a release of muscle tension.

~Professor Graham Welch, Director of Educational Research, University of Surrey, Roehampton, UK

Passover Items
featured in
March

GIFT GARDEN HOURS

SUNDAY - 9:30 AM - 1:00 PM

MONDAY - 7:00 - 8:30 PM

TUESDAY - 3:45 - 5:30 PM

WEDNESDAY - BY APPOINTMENT ONLY

THURSDAY - BY APPOINTMENT ONLY

FRIDAY - LIMITED HOURS

CONTACT EITHER

**LINDA AT 610-220-2148 OR KATE AT 610-594-7441
TO VOLUNTEER OR TO ARRANGE A SPECIAL TIME TO VISIT
THE GIFT GARDEN.**

**GIFT REGISTRY: CONTACT KIM SEGAL AT
610-212-2400**

***THE GIFT GARDEN OFFERS
INVITATIONS***

☞ **NEWBORN ANNOUNCEMENTS**

☞ **STATIONERY**

☞ **BAR/BAT MITZVAH**

☞ **WEDDING**

☞ **SAVE THE DATE**

Contact Nancy at 610-325-4297 or haz@comcast.net
for more information

RABBI'S CLASSES

Tanakh Study*:

**Wednesdays, March 2, 9, 16, 23 & 30
at 10:30 AM in the Library**

Torah Study*:

**Wednesday, March 9
at 7:30 PM in the Library**

***Please confirm with the
Office or Rabbi**

AROUND OUR SCHOOL



March is here and the Religious School calendar is bursting with activities and learning opportunities for our students and families! Take a look...

Saturday, March 5	Alef Class Hebrew Students and Families will participate in a very special Alef Naming program and ceremony. 6:30 - 8:00 PM
Sunday, March 6	Scholar-in-Residence, Rahel Musleah, will be presenting a special program entitled, "Torah and Teapots" just for our students during our PM Session 12:15 - 1:00 PM. (In order to accommodate everyone, AM students are welcome to attend the PM session.)
Sunday, March 6	All families invited to a unique and fun " <i>Fiddler on the Roof</i> " movie and sing-along at the Media Theatre. Don't forget to come in costume ... the Papas, the Mamas, the Sons, and the Daughters! Doors open at 1:30 PM! (Details on the front page.)
Friday, March 11	Gimel Class leads Shabbat Services
Sunday, March 13	6 th grade Bar/Bat Mitzvah Series with Cantor Kaplan ... "Making a Difference"
Sunday, March 20	Purim Carnival! All Students arrive at 10:00 AM and meet in the Sanctuary for the Megillah reading ... Purim Carnival follows. 10:00 AM - 12:30 PM
Sunday, March 27	5 th grade visits Mitzvah Food Pantry
Sunday, March 27	Kindergarten & 1 st grade Dor l'dor - Elijah & Miriam
Sunday, March 27	Rabbi Lecture Series #1 for Parents only! 11:30 AM - 1:00 PM
Sunday, March 27	"Make Your Own Seder Plate" with The Clay Studio. There is a \$25 per family charge for this program ... reservations required ... space is limited!



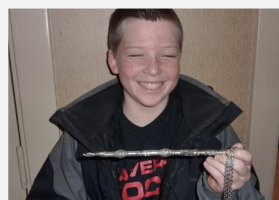
Showing off my Kiddush Cup and Yad



Pre-k explores the Torah



Dressing the Torah



Look at my Yad

Save the Date
Free College
Admissions
Workshop

Wednesday, April 27
7:00 PM—8:30 PM
to be held in the
Selekman Annex

Offered by
Sue Bilsky from
JEVS Career
Strategies

CONTRIBUTION FORM

I wish to make a donation to the _____ Fund in the amount of \$ _____

The contribution is in (check one): _____ memory _____ honor _____ appreciation of: _____

The card should read: _____

This gift of tzedakah is from: _____

Address: _____

Area/Phone: _____

Please send this form with your check made payable to:

TEMPLE SHOLOM, 55 North Church Lane, Broomall, PA 19008



The Preschool Prepares for Change

Change continues to be a theme in our synagogue. Some changes are exciting and bring renewed optimism. Rabbi Rigler has been here almost two years and the energy and vigor he has brought to our Temple is still fresh and apparent.

Some change brings mixed feelings. Cantor Patty announced her retirement plans this fall. The universal response was this is a positive change for Cantor Patty and her family, while being a sad change for our congregation. The silver lining in this change is the hard working search committee is seeking a wonderful Cantor who will be a positive addition, and we still have Cantor Patty as part of our synagogue family.

The Preschool is also undergoing change. Miss Rachel has been an important member of our preschool for four years. She has decided it is time for her to move on and look for a position that will advance her career. Our preschool family will miss her, but wishes her all the best in her future endeavors. I am stepping down as the director of the Preschool to spend more time in the classroom. My dual role as director/teacher these past two years has been an interesting challenge and growth experience, but my heart and passion is in teaching. I am excited to welcome a new director that will help grow the preschool to reach its fullest potential.

Just as it seems as though Rabbi Rigler has always been a part of our Temple family, these new staff members will become an important part of our Temple family. Interested in learning more? Call us! We're here. 610-886-2065.

~Lorri Myers, Early Childhood Education Director



THE RELIGIOUS SCHOOL PURIM CELEBRATION!

Sunday, March 20

10:00 AM - 12:30 PM

Great Games and Prizes!

Delicious Food and Sweet Table

Face Painting and More!

Separate Preschool games for smaller children

FULL TICKET \$12 (ENOUGH TO PLAY ALL DAY)

HALF TICKET \$6 (FOR YOUNGER CHILDREN)

THE SHPIEL BEGINS AT 10:00 IN THE SANCTUARY

THE CARNIVAL WILL IMMEDIATELY FOLLOW IN THE MULTIPURPOSE ROOM

Buy Hamentaschen by the dozen (\$7/doz) from
BEST CAKE Kosher Bakery in Philadelphia,
Pick up during the Carnival ONLY. For specific flavors
and pre-orders contact Abbe Goldberg at 610-891-8941 or abbegoldberg@verizon.net



NEW THIS YEAR: Buy just the rounds for \$4/doz.

Fill with your favorite fillings & BAKE at HOME. YUM!!

For pre-orders contact Abbe at 610-891-8941 or abbegoldberg@verizon.net

We need your HELP to make this Carnival a success

To VOLUNTEER to run a booth for an hour or BAKE for our Sweet Table contact

E-mail Rachel Amdur rachel.amdur@gmail.com or Mindy Haenn at peteandmindy3@verizon.net



MITZVAH MEAL UPDATE

SISTERHOOD SERVES DINNER AND LUNCH!

On Tuesday, February 8, the Sisterhood and other Mitzvah Meal regulars provided dinner and take home sandwiches for folks at the Life Center of Eastern Delaware County. There were approximately 125 people there and we served over 325 plates that evening. We had so much wonderful food that the clients were able to come back for seconds and even thirds. The 13 casseroles and salads were hearty and provided a delicious meal. We gave them rolls to eat there and take home, as well as fruit, brownies and sandwiches to take home. They all left very grateful and satisfied.



Many people came forward to offer food, monetary donations and time. This was a wonderful effort by our Sisterhood and congregation. Many thanks to each and every member who participated! Casserole Makers: Maria d'Alessandro, Dorothy and Nancy Berger, Emily Kahn-Freedman, Mary Ann Gould, Nancy Hays, Jessica Lynn Hirsch, Alison Holt-Kalish, Cheryl Lynch, and Mollie Plotkin. Salad was provided by Stephanie Albero and Laurie Orsatti Bogatz, while Debra Kaplan and Lisa Warner provided rolls and butter enough for an army! Dessert was provided by Evalyn Elias, Vera Neumann-Sachs and Elaine Smith. Fred Shamlan contributed milk for coffee.

We decided to bring a couple of new offerings: fruit and sandwiches. Larry Bell and his son bought fruit from Produce Junction. Take home sandwiches were made by Laurie Burstein-Maxwell and her family Lee Maxwell, Dan and Samantha.

Emily Kahn-Freedman went to BJ's to purchase most of the supplies, while Laurie Burstein-Maxwell received gift card donations from both the Pepperidge Farm Outlet and the Giant where she was able to purchase all of the bread for sandwiches at no cost. The following people helped to load/transport and/or serve the food: Larry Bell and his son, Laurie Burstein-Maxwell, Lee Maxwell, Susan and Emily McMillan, and Fred Shamlan. We couldn't have done it without the generous financial support by the following people: Shirley Birenbaum, Jackie Blumberg, Brooke Braunstein, Lisa Chirlian, Barbara Clarke, Elyse Endy, Pam Haas, Lori Rowling, Julie Lasorsa, and Phoebe and Myron Resnick.

The support for this event was wonderful. Thank you to all who participated.

Editor's Note: A special thanks to Laurie Burstein-Maxwell for coordinating this effort on behalf of the Sisterhood and the Congregation.

VOLUNTEERS ALWAYS NEEDED!

Our next Mitzvah Meal is scheduled for Tuesday, April 12 and will be coordinated by the Hilltoppers and our Youth Group, ToaSTY working together. We will be preparing and serving a hot meal to about 200 hungry people at the Life Center shelter in Upper Darby. We need volunteers to purchase, prepare and serve the food; recipe is provided. To help out, please contact Howard Cylinder at hcylander@msn.com or call him at 484-868-2578.

Upcoming Mitzvah Meal Dates:

April 12 - Hilltoppers and ToaSTY
June 14 - Choir
August 9 - Board of Trustees

HAVDALAH IN THE HOME!



Bob and Marian Slater shared food and prayers with three other couples January 29. They have found that the formula of two people you know well, two you sort of know, and two new faces made for a delightful evening.

The Membership Committee encourages you to build your own groups or join one,

For advice or help contact
Bob Slater at bobnmarians@aol.com or
Elyse Endy at elyseendy@gmail.com.

HANUKKAH IN APRIL TOY DRIVE

The Jewish Life and Learning Committee is asking for donations for our "Hanukkah in April" Toy Drive. We will be donating new, unwrapped toys for kids up to age 18 who are at the Children's Hospital of Philadelphia. There will be a basket in the Lobby for your donations. Thanks for helping to bring a smile to the faces of kids at CHOP. Questions? Contact Cindy Meyer at 610-359-1133 or Robin Briggs at 610-993-9652.

DOING MITZVOT - SO MANY WAYS TO MAKE A DIFFERENCE

Lead a Shiva Minyan

Would you like to learn how to perform this mitzvah? Please contact Rabbi Peter Rigler for more information and training at rabbi@temple-sholom.org.

Jewish Family and Children's Service of Greater Philadelphia

has many events coming up in the next few months. Visit the JFCS website www.jfcsphilly.org for additional information. The programs and events provide information on aging, adoption, bereavement support groups, Gam Yahad-Programs for Adults with Developmental Disabilities and their Families and Friends, volunteer training and other interesting topics. For information on adoption programs go to info@openarmsadoption.net.

Volunteer Your Time

The Temple is always looking for volunteers So if you have a little bit of time or a lot - and want to make a difference in our community, feel free to contact Dina Stonberg, Volunteer Coordinator, with any questions or comments at: dinamph@gmail.com or 484-361-5083.

Cuddle My Kids

Volunteers needed to play with children in their homes while their moms undergo chemotherapy treatment. If helping cancer patients and their families interest you, please e-mail: cgabrielsen@cuddlemykids.org.

Little Smiles

Little Smiles is a non-profit volunteer organization that needs toys, games, VIP outings, and theme park tickets for children in local hospitals, hospices and shelters. The local chapter is in Kennett Square. If this interests you, please call them at 610-765-1272.

Still Needed – Wool & Toiletries

I just delivered 25 large afghans to Life Choice Hospice. The Knit Wits are eagerly awaiting more wool. There is an ongoing need for toiletries of all types for Rev Sheltons' the Life Care Center.

~Amy Berkowitz

Hospice

We are here for our congregational members. Your privacy is respected.

Please call: Barbara Smilk 610-353-0840
Amy Berkowitz 610-353-8077



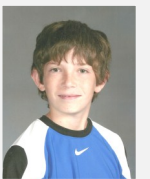
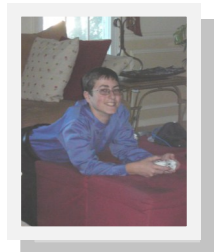
MARCH B'NAI MITZVAH

Ryan Kalan, son of Andrea and Andrew, will become a Bar Mitzvah on Saturday, March 19.

On this special occasion, he will be joined by his brother Justin and sister Ashley, great Mommom, Frances Garofola, great Grandmom & great Grandpop Mildred & Herbert Midelton and his grandparents Diane & David Midelton, Jeff & Susan Kalan and Michele Eplan.

A 7th grade Radnor Middle School student, Ryan enjoys playing baseball, watching the Eagles & Phillies, and playing endless hours of Call of Duty on the X-box. He is in the accelerated Math program at school.

For his Mitzvah Project, Ryan participated in the "Witness to History Project" through the Holocaust Awareness Museum & Education Center in Philadelphia. Ryan "stepped into the shoes" of a survivor by learning his unique accounts of survival via listening to the survivor tell his story and asking questions. Ryan then had to write a biography about the survivor and present the story for at least 50 others. Ultimately, Ryan will have the lifelong job of educating others about the Holocaust by sharing this personal narrative, an imperative task now that our survivors are aging and in failing health.



Hi my name is Mike Kaplan. My Bar Mitzvah is March 26. My parents are Debbie and Jon Kaplan. My grandparents, Arlene & Steve Cohen and Roslyn Kaplan are coming to my Bar Mitzvah. Aunts & uncles, and cousins from the area are also coming. My brother's name is Scott Kaplan, age 10. I am a 7th grader at Haverford Middle School. I play the trombone for the 7th grade band. My hobbies are playing baseball, soccer and drawing. At Phillies Baseball Academy Camp I won the Coach's award for overall play and sportsmanship. I also won the MVP and game balls for little league baseball.

For my Mitzvah Project I volunteered at the Don Guanella School for people who have physical and cognitive disabilities. I helped at the Thanksgiving show and with an individual student who has problems with reading. I also packed and delivered food to the elderly through the JCC mitzvah food pantry.

JNF TREES FOR ISRAEL

Did you know you can "plant a tree" or make a donation toward the water needs of Israel for as little as \$10.00? Additional trees are \$10.00 each. The donation may be directed in honor or in memory of a friend or relative.

A quick and easy way to honor and/or remember a friend, relative or event is to have

PLANT A TREE AND WATER IT!

A tree was planted by Elizabeth G. Mellman in memory of Doris Moore, beloved sister of Carole Moore.

A tree was planted by Elizabeth G. Mellman in memory of Mary Cleland, beloved sister of Eileen McGinley.

A tree was planted by Elizabeth G. Mellman in memory of Jim McNear, beloved husband of Rosemary McNear.

A Circle of 5 trees was planted by Cindy & Jim Meyer in honor and appreciation of Rabbi Peter Rigler officiating at the wedding of David & Meredith.

Two trees were planted by Rosalyn & Hal Smolinsky in memory of Walter Kleinman, beloved husband of Mrs. Shirley Kleinman.

A tree was planted by Elizabeth G. Mellman in memory of William J. Wirkus, loving companion of Karin Hall.

one or more trees planted in Israel. A lovely certificate is sent to the honoree. For details and to make arrangements through the Jewish National Fund, please call Shirley Birenbaum at 610-328-2171.



DO A MITZVAH FOR ISRAEL!

A tree was planted by Elizabeth G. Mellman in memory of Leonard J. Coopersmith, loving companion of Evie Connelly.

A tree was planted by Thelma Greenbaum in Honor of the 99th Birthday of Mrs. Estelle Krause.

A Circle of 5 trees was planted by the Elias Family in honor of Cantor Patty Kaplan.

A tree was planted by Loraine Bailie and Family in memory of Mary Blackman, beloved mother of Arlene Gold & Family.

A tree was planted by Loraine Bailie and Family in honor of the 80th Birthday of Elaine Barlow.

An Orchard of 10 Trees was planted by Jeffrey Krinsky, Nathan Krinsky, & Nana in honor of Ronnie Krinsky's College Graduation from Temple University.



Lost & Maybe Found!

Please check the hall closets at Temple Sholom for your lost items. They just may be waiting for you there.

FOR FUN PHOTOS

.... CHECK OUT THIS LINK:

[HTTP://PICASAWEB.GOOGLE.COM/TEMPLESHOLOMTIDINGS](http://PICASAWEB.GOOGLE.COM/TEMPLESHOLOMTIDINGS)

THE ORGANIZING TEAM

Cindy Eddy, M.Ed.
Professional Organizer

phone: 610-789-1663

e-mail: Cindy@OrganizingTeam.com

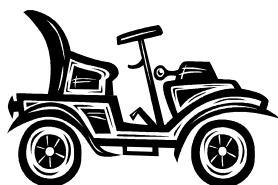
website: www.OrganizingTeam.com

Temple Sholom Member

Home ■ Office ■ Special Needs

RECYCLE PRINTER CARTRIDGES AT TEMPLE SHOLOM

PLEASE DON'T TOSS OUT THOSE OLD PRINTER CARTRIDGES. RECYCLE THEM! USED INK AND LASER JET PRINTER CARTRIDGES ARE BEING COLLECTED BY SANDY IN THE MAIN OFFICE. PLEASE DROP OFF ANY USED CARTIDGES AT THE FRONT DESK. THANK YOU.



***NEED A RIDE TO
THE TEMPLE?
CALL ON THE
BROTHERHOOD.***

***FOR INFORMATION, PLEASE
CONTACT HOWARD CYLINDER
AT 610-355-7554 OR
HCYLINDER@MSN.COM***

***CELEBRATING A SIMCHA?
SHARE IT WITH AN ONEG!***

*Honor your loved ones and the Temple by
sponsoring an Oneg and sharing your special
day with us. A birthday, anniversary, baby
naming, or marriage blessing are all perfect
occasions.*

*Dates are still available
throughout the year! Please contact the
Temple at 610-356-5165 for details.*

***HERE IS HOW TO FIND OUR
LIVE WEBCAST***

Click on the following link:
<http://www.temple-sholom.org/>
or go to our website:
www.temple-sholom.org

Click on **About Us**
In the drop down menu click on **Join Us**
Scroll to the bottom of the screen
The webcast screen* will be in sight.

*Check our website and the weekly Shabbat
Announcements for when live Webcasts will be available
and for which events.

**Auerbach Central Agency for Jewish
Education
Save the Date**

April 13, 2011

**Celebration of Jewish Life and Learning
Honoring
Joseph H. Levine
6:00 PM Hilton Philadelphia City Avenue**

**For more information:
llicht@acaje-jo9p.org
215-635-8940, ext. 1217**

***WEBCASTING PUBLIC SERVICE
ANNOUNCEMENT***

Services conducted in the sanctuary may be webcast and can be viewed simultaneously on the Temple's web site. Your image/voice may be seen/heard on the Internet. For more information concerning webcasting at Temple Sholom, please see the document entitled "Temple Sholom Webcasting: Policies and Procedures," copies of which are available outside the sanctuary.

***AMAZON ASSOCIATE
PROGRAM: SUPPORT TEMPLE
SHOLOM WHILE YOU SHOP***

Amazon's Associates Program gives Temple Sholom a commission when you link to Amazon's site from the Temple website and purchase merchandise. When you shop on amazon.com, please remember to make your purchases through the Amazon link on the bottom of our website - <http://www.templesholom.org> and Temple Sholom will receive a commission based on your purchase. For one click service, you can bookmark Temple Sholom's Amazon link to make it even more convenient for you.

HAPPINESS & MEMORIAL CARDS



Take advantage of this wonderful and thoughtful service Sisterhood provides our members. These beautifully designed cards are sent by the Sisterhood to anyone you wish: in honor of a simcha, in memory of a loved one, get well wishes or any sort of event you want to commemorate. Sisterhood will send out your greetings for only \$2.50 including postage. For details and to send Happiness & Memorial cards, call Shirley Birenbaum at 610-328-2171.

It's a stress-free way to remember friends and loved ones and it saves you a trip to Hallmark!

To: Linda Krinsky & Family
From: Shirley Birenbaum
Condolences on the death of your beloved mother

To: Cindy Fastman
From: The Sisterhood Board
Mazel Tov on your Bat Mitzvah

To: Diane Jaffe
From: The Sisterhood Board
Mazel Tov on your Bat Mitzvah

To: Cindy Meyer
From: Beverly & Steve Granoff
Best wishes for a speedy recovery

To: Elyse Endy
From: The Sisterhood Board
Condolences on the death of your uncle, Al Cohen

To: Eric Cantor & Family
From: The Sisterhood Board
Condolences on the death of your mother, Marian Cantor

To: Dr. Howard Rosenberg & Family
From: The Sisterhood Board
Condolences on the death of your mother, Rose Rosenberg

To: Dr. Julian Gladstone & Family
From: The Sisterhood Board
Condolences on the death of your mother, Mary Gladstone

To: Sharon Goldman
From: The Sisterhood Board
Condolences on the death of your former brother-in-law, Saul Korewa

To: Lance & Dorothy Berger
From: The Sisterhood Board
Mazel Tov on the birth of your granddaughter, Hailey Rose

To: Nancy Berger
From: The Sisterhood Board
Mazel Tov on becoming an "aunt" to Hailey Rose

To: Andrew & Andrea Kalan
From: The Sisterhood Board
Mazel Tov on the Bar Mitzvah of your son, Ryan

To: Jonathan & Debra Kaplan
From: The Sisterhood Board
Mazel Tov on the Bar Mitzvah of your son, Michael

TEMPLE FUNDS

Cantor's Discretionary Fund

Contributions to this fund will be used at the discretion of our Cantor.

Financial Assistance

To offset the reduction of revenue incurred when a Temple Shalom family cannot afford to pay their total dues. Contributions go directly into the General Fund.

General Fund

To support Temple operations.

Hospice and Healing Fund

To assist the Hospice Committee in carrying out its support programs.

Howard Weiner Library Fund

An endowment fund in which the interest is used to purchase books and supplies for the library.

Jubilee Endowment Fund

To secure the future of Temple Shalom in Broomall.

Judith Bernick Music Fund

An endowment fund in which the interest may be used for the music program.

Marlene B. Kleinman Campership Fund

Interest is used to send students to a URJ camp each year.

Mayer Selekman Jewish Leadership Fund

To provide grants for graduate study toward becoming a Jewish professional.

Rabbi's Discretionary Fund

Contributions to this fund will be used at the discretion of our Rabbi.

Preschool Fund

To support the programs of the Etta Natalie Rosenblatt Preschool.

Preschool Music Fund

Established by the Confirmation Class of 2008 to support Preschool Music Programs.

Religious School Education Fund

To support programs, special events and materials for education at all levels.

Contributions can be earmarked for Women's Spirituality Group studies at the donor's discretion.

Sanctuary Book Fund

To defray the cost of purchasing books for our sanctuary. A book plate is placed in each book indicating the donor's name and the occasion, for a minimum donation of \$36.

Technology Fund

To maintain and improve all aspects of technology used by Temple Shalom.

Temple Beautiful Fund

To improve and maintain the aesthetics of the Temple, including decor, furnishings, grounds and gardens.

Tzedakah (Food) Fund

To feed the hungry in our community. Contributions are distributed at the close of each fiscal year to outside charities at the discretion of a special Tzedakah committee.

Youth Scholarship Fund

To send Temple Shalom Youth Group members to National Federation of Temple Youth (NFTY) sponsored events. Scholarships are awarded based on financial need.

Contributions also may be made directly to the Temple Shalom **Brotherhood, Sisterhood or Hilltoppers.**

THE TRADITION GROWS

SERVING THE GENERATIONS...



PAST, PRESENT AND FUTURE

Levine's new memorial chapel, Trevoze, PA

For more than 117 years, the family-owned Joseph Levine & Son Memorial Chapel has maintained a high reputation for quality while serving generations in the Jewish community.

And now the tradition grows with our new Bucks County Memorial Chapel, in addition to our Philadelphia and Main Line locations.

Whether you need pre-arrangement assistance or time-of-need service, you can find it in any of our three convenient locations.

Our knowledge of and experience with Jewish traditions will insure that every detail of a funeral is handled efficiently, sensitively and at a most competitive rate. We are proud to offer the highest quality care.

Remember us. We are available 24 hours a day, seven days a week, to answer your questions and to help.

JOSEPH *Levine* & SON

Memorial Chapel

SERVICE, TRADITION & DIGNITY

2811 West Chester Pike
Broomall, PA 19008
(610) 325-2000
Elliot J. Rosen,
Supervisor

7112 North Broad Street
Philadelphia, PA 19126
(215) 927-2700 or
(800) 992-3339
Joseph H. Levine,
Supervisor

4737 Street Road
Trevoze, PA 19053
(215) 942-4700
Samuel Brodsky,
Supervisor



Website: www.levinefuneral.com • E-Mail: info@levinefuneral.com

Cookie Crew Being Formed

We are looking for a few good volunteers to work together on any or all of the following:

- ★ Monthly baking (bake-a-thon) "gatherings" in the TS kitchen for unsponsored Onegs;
- ★ Setting up dessert trays and flowers for unsponsored Onegs;
- ★ Occasional visits to help keep the kitchen and adjoining closet organized and accessible;
- ★ Helping out with kitchen issues as they arise.

Fresh Vegetables for All! Local, Organic & Fresh

Temple Sholom in Broomall will again be a "pick-up" spot for the Lancaster Farm Fresh CSA. A CSA (community supported agriculture) is a vegetable subscription program where individuals and families purchase a share of the harvest, paying the farmers in the winter and early spring, and receiving produce in the summer. The vegetable share runs 25 weeks. Other options include fruit shares (20 weeks), flower shares (20 weeks) and various organic herbal and dairy products which are also available for sale.

If you want to learn more, visit <http://www.lancasterfarmfresh.com/> and click on **CSA**. Register directly through Lancaster Farm Fresh. Click and print out the sign-up form. Make sure to indicate **Temple Sholom in Broomall** for pick-up location.

"Humanities on the Road" to Tape at TS!

I am very excited to share that "Humanities on the Road" will be taping their show at Temple Sholom the evening of April 14. The presentation given by professor, dramaturg and Temple Sholom alumni Warren Hoffman, is called "Blacks and Jews on Stage and Screen." Check out the link for the series: <http://www.pahumanities.org/projects/road.php>. Our name already appears on their website as a program host. The event will be well publicized (especially by me!) and is open to the public. In addition to being a special program, it is an incredible opportunity for exposure and PR for Temple Sholom.

For more information on any of these programs, call or e-mail Sandy Cohen, Community Coordinator at skcohen@temple-sholom.org or 610-356-5165.

~ Sandy Cohen, TS Community Coordinator

MEMBERSHIP INITIATIVES

Ambassador's Program An Initiative for Welcoming New Members

Help us welcome our new members by easing their integration into our caring community as an Ambassador of Temple Sholom. Help us build bridges that lead new members from feeling like strangers to feeling like part of the family. We are looking for active members of our community who are willing to reach out and embrace our newest members. Though a one-year commitment, we hope that the connections and bonds formed in the first year will encourage both the Ambassadors and new members to continue their connections. While the Committee is starting to create a list of possible ambassadors, we would LOVE to have people step up and offer to be an ambassador without being called. Are you one of them?

This is an awesome, welcoming program that will benefit not only new members but also the participating Ambassador. Interested? Please contact Elyse Endy, Membership Chair at elyseendy@gmail.com or Donna Hendel at donnabhen2@aol.com.

Elijah +2 First Night Seder

Join us for our first annual Elijah + 2 project, which will match Seder hosts with Seder guests within our Temple family. No person should be without a home to go to for first night Seder, so please consider opening yours!

If you would be willing to host, or if you would appreciate being a guest at a home Seder, just fill out the E+2 Matching Form which can be found on our website – download it, fill it out and send it in.

Please submit your form by April 11, 2011. The E+2 Committee will make every effort to accommodate everyone's needs and requests. Remember to also join us for our annual 2nd Night Seder led by Rabbi Rigler and Cantor Kaplan held at Temple Sholom on Tuesday, April 19.

Questions? Contact Elyse Endy at elyseendy@gmail.com or Ellen Covner at ellen@customgardensllc.com.

Temple Tidings

Cantor's Discretionary Fund

In honor of the B'not Mitzvah of
Cindy Fastman, Diane Jaffe &
Lisa Warner

Mrs. Elaine Smith

In appreciation of Cantor Patty
Kaplan on the occasion of
becoming a Bat Mitzvah

Mrs. Diane Jaffe

In memory of Fred Lerman

Dr. Charles Lerman

In memory of Henry F. Morley

Mrs. Lottie A. Morley

In memory of Isa Barnett

Mr. & Mrs. Stephen Barnett

In memory of Jacquie Stiefel

Mr. & Mrs. David Buckwalter

In memory of Phyllis Powell

Mr. & Mrs. David Leavitt

Endowment Fund

In memory of Albert Nelson

Cantor Sandy Gold

Fall Fundraising Appeal

Mr. & Mrs. Steven Granoff

Mr. & Mrs. Edward Farmer

Mr. & Mrs. Jerry Mark

Mr. Jerry Kagan &

Ms. Jill Golde

Mr. Jerry Frank &

Ms. Melissa Shusterman

Mr. & Mrs. Dana Hoffer

Mr. & Mrs. Steven Clarke

Mr. & Mrs. John

Dougherty

Dr. Stephen Cash

Mr. & Mrs. Frank Greenberg

Mr. & Mrs. Myron Granik

In memory of Marian Cantor

Mr. & Mrs. Michael Samuels

Financial Assistance Appeal

In memory of Marsha Schwartz

Mr. & Mrs. Adam Weinstein

In memory of Robert Seitchick

In memory of Thomas Bondy

Mr. & Mrs. Edwin Seitchick

In honor of Cindy Fastman

Mr. & Mrs. Steve Green

General Fund

In memory of Rudy Lidsky

Mr. & Mrs. Adam Weinstein

In memory of Marian Cantor

Ellen Weiss

Donald & Laurie Zahn

In honor of The Gottlieb Family

Audrey B. Fingerhood

In memory of Mary Grace Kiesel

Mr. & Mrs. Michael Bolotsky

Hilltoppers Fund

In honor of Dr. Burton & Helen

Rosan's 60th wedding

anniversary

Mrs. Thelma Greenbaum

In memory of Charles & Sophie

Mintz

Mr. & Mrs. Arthur Rabin

In memory of Barnett Plotkin

Dr. & Mrs. Robert Plotkin

In memory of Beatrice Leavitt

Mr. & Mrs. David Leavitt

Hospice and Healing Fund

In memory of Sylvia Solomon

Mr. & Mrs. Barry Jacobs

In honor of a speedy recovery

for Barbara Smilk

Gary & Francine Kaar

In memory of Herman Smith

& Jean Much

In memory of Dr. Howard Smith

Mrs. Elaine Smith

Howard Weiner Library Fund

In memory of Adolph

Rosenberg

Drs. Howard & Ruth

Rosenberg

Judith Bernick Music Fund

In memory of Walter Gehrause

Dr. & Mrs. Robert Gehrause

In memory of Muriel Frank

Dr. & Mrs. Robert Plotkin

In memory of Arthur Greenberg

Dr. & Mrs. Joseph

Greenberg

Marlene Kleinman

Campership Fund

In memory of William Levenson

Mrs. Ethel Levenson

Preschool Fund

In memory of Arlene Liss

Dr. & Mrs. Neil Schwartz

In memory of Etta Rosenblatt

Mr. Herb Rosenblatt

In memory of David Levine

Richard & Honore Poch

Rabbi's Discretionary Fund

In memory of Gilbert Soifer

Dr. Harvey Soifer &

Ms. Patricia Kanter

In memory of Rose Fishelman

Mr. & Mrs. Hal Litt

In memory of Jean Weinstein

Mr. & Mrs. Adam Weinstein

In memory of Marian Cantor

Dr. Mel & Jody Platt

Mr. & Mrs. David Blumberg

In memory of Abraham &

Marjorie Solow

In memory of Marc Solow

Mr. Alan Kauffman & Ms.

Rochelle Solow

In memory of Leon Poch

Col. Richard & Mrs. Honore

Poch

In memory of Stanley C. Perkins

Mr. & Mrs. Thomas J.

Perkins

In memory of Sidney Rowling

Mr. & Mrs. Michael

Rowling

In memory of Jean Munin

Mrs. Norma Munin

In memory of Ernest Buckwalter

In memory of Jacquie Stiefel

Mr. & Mrs. David Buckwalter

In memory of Ralph Opstbaum

Mr. & Mrs. Timothy Habbart

In memory of Sadie Lieberman

Mr. & Mrs. Warren

Lieberman

In memory of Mary Gladstone

Dr. & Mrs. Myron Resnick

In memory of Roslyn Laver

Mr. & Mrs. Neil Meyer

In honor of Rabbi Peter Rigler

The Adams Family

In honor of Cindy Fastman's Bat

Mitzvah

Ruth & Lee Shafer

In appreciation of Rabbi Peter

Rigler on the occasion of

becoming a Bat Mitzvah

Mrs. Diane Jaffe

In appreciation of Rabbi Peter

Rigler on the occasion of our

wedding

Mr. & Mrs. David Meyer

Religious School Education

Fund

In memory of Menashe Ender

Mr. & Mrs. Adam Weinstein

In memory of Marian Cantor

Mr. & Mrs. Jerry Mark

Mr. & Mrs. Michael

Danowitz

In memory of Joel Schwartz

Richard Wagner & Lisa

Learner-Wagner

Sanctuary Book Fund

In memory of Harry Blaufeld

Mrs. Andrea Stern

In memory of Marie Seltzer

Mr. & Mrs. Jeffry Bleiman

Selekman Jewish Leadership

Fund

In memory of Harry Apt

Mrs. Lottie A. Morley

Technology Fund

In memory of Milton K. Berger

Mr. & Mrs. Marty Birenbaum

Tzedakah Fund

In memory of Anita Ender

Mr. & Mrs. Adam Weinstein

In memory of William Lipshitz

In memory of Annie Lipshitz

In memory of Hattie Gold

In memory of Audrey Melnick

Mrs. Thelma Greenbaum

In memory of Eve Lewis

Mr. & Mrs. Mitchell Lewis

In memory of Lt. Herman Drizin

Mrs. Barbara Drizin

In memory of Walter Kleinman

Mr. & Mrs. Joe Shefrin

In memory of Norman & Carol

Jablow

Mrs. Susan Jablow McMillan

Women's Spirituality Fund

In honor of Cindy Fastman's Bat
Mitzvah

Mr. & Mrs. John Barr

Dr. & Mrs. Burton Rosan

In memory of Patrick

O'Callaghan

Mrs. Aileen Lange

In memory of David Stukelman

Mrs. Judith Brenner

Yahrzeit

Donation

Opportunities

**To make a donation
in memory of a loved
one, please refer to
Page 16 for the list of
Temple Funds.**

Supermarket Gift Cards

**Acme, Giant, Genuardi's, and
Superfresh**

**You need to Grocery Shop.
Want to help while you shop
without**

it costing you a dime?

**Buy Supermarket Gift Cards
today**

**Everybody benefits -
especially Temple Sholom.
Contact the Temple Office
today to sign up
Call 610-356-5165**

Recent Deaths

Rose Rosenberg

**mother of Dr. Howard
Rosenberg**

Mary Blackman

aunt of Loraine Bailie

Avi Teres

**young friend of Amy
and David Berkowitz**



March 1

Bertha Simons
Robert Seitchick
father of Edwin Seitchick
Carol Shapiro
aunt of Lawrence Husick

March 2

Ernest Buckwalter
father of David Buckwalter
Frank C. Horwitz
father of Ellen Shapiro
Isadore Segal
father of Arnold Segal

March 3

Menashe Ender
grandfather of Robin Weinstein
Albert Goldfarb
uncle of Eileen Wolfson
Rose Horowitz
mother of Jean Shefrin
William Levenson
husband of Ethel Levenson
Joel D. Schwartz
nephew of Richard Wagner &
Lisa Leamer-Wagner
Norman Jablow
father of Susan Jablow-McMillan

March 4

Norman Sobel
Isa Barnett
father of Stephen Barnett
James Cohen
brother of Jane Koppelman
Muriel Frank
sister of Shirley Plotkin
Beatrice Leavitt
mother of David Leavitt
Sophie Mintz
mother of Sylvia Rabin
Phyllis Powell
mother of Julie Leavitt

March 5

Ernest Edwards
Jane Ettelson
mother of Shirley Chalick
Etta Rosenblatt
wife of Herb Rosenblatt
Stanley Peitzman
step-father of Hope Stone

March 6

Eli Bloom
father of Joy Green
Nathan Bronstein
father-in-law of Nina Bronstein
Lt. Herman Chuck Drizin
brother-in-law of Barbara Drizin
Hyman Harris
grandfather of Ilene Berger
Richard Robinson
brother-in-law of Susan
Robinovitz
Marie Seltzer
sister-in-law of Jeffrey & Harriet
Bleiman

March 7

Al Kowit
Thomas Bondy
friend of Edwin & Annilee
Seitchick

Esther Eisenstadt
grandmother of Adina Stonberg
Abby Fuhrman
aunt of Barbara Mark
Abe J. Goldin
Arlene Liss
mother of Judith Schwartz

March 8

Maury Buxbaum
husband of Marcella Buxbaum
father of Laurence Buxbaum
Louis Eisner
uncle of Harriet Schultz
George Persky
father-in-law of Adele Persky
Charles Rosenthal
brother of Sophie Kean
Rabbi Albert Silverman
father of Amy Berkowitz
father of Susan Garelik
Lazar Tyutyunikov
grandfather of Ellen Bedenko
Ida Siegal
grandmother of Barbara Berlin

March 9

Isaac Tontak
Barbara Faktorow
sister-in-law of Mort & Sylvia
Oxman
Adele Mellinger
mother of Natalene Kramer

March 10

Robert I. Lipton
Irving Marx
Bessie Schwartz
grandmother of Jerry Mark
Irving Stein
father of Barbara Smilk

March 11

Meyer Bolotsky
father of Michael Bolotsky
Edward Brody
father of Deborah Rex
Sam Dennis
uncle of Barry Jacobs
Kenneth Klausner
husband of Pearl Klausner
Betty Lester
mother of Ken Lester
Milton K. Berger
brother of Shirley Birenbaum

March 12

Edwin Clarke
father of Steven Clarke
Carol Clarke
sister-in-law of Steven & Barbara
Clarke
Roslyn Laver
grandmother of Donna Meyer
Dr. William M. Lester
father of Ken Lester
Harry B. Paul
uncle of Ellen Lipschutz

March 13

Victoria Brody
grandmother of Elyse Endy
Bella Datner
aunt of Elizabeth Datner

Otto Rosenblatt
father of Herb Rosenblatt

March 14

Seymour Halpern
father of Sherry Halpern
Ruth Oxman
mother of Mort Oxman
Sophie Mintz
mother of Sylvia Rabin
Abraham Schwartz
grandfather of Jerry Mark
Phyllis Powell
mother of Julie Leavitt

March 15

Samuel Weinman
Irving Breggar
brother-in-law of Analee Granik
Florence Holender
mother of Dorothy Rodney
David Nathan Kane
grandfather of Michael Kane
Stanley Peitzman
step-father of Hope Stone
grandfather of William Stone
Henry Rodney
husband of Dorothy Rodney
Albert Nelson
uncle of Sandy Gold
David Levine
father of Honore Poch
William Stone
father of Hope Stone

March 16

Beatrice Babad
aunt of Barbara Goldstein
David Bianchi
grandfather of Donna Witonsky
Jonas Carpenter
father of Mary Ann Gould
Inise S. Engelman
mother of Jayne Wessels
Barnett Plotkin
father of Robert Plotkin
Sarah Shefrin
mother of Joe Shefrin
Gerson Stein
uncle of Barbara Smilk

March 17

Florence Bernkrant
mother of Arlana Gottlieb
Joseph Irvine
uncle of Daniel & Elyse Endy
Herman Krangel
father-in-law of Becky Krangel
Benjamin Luteran
father of Lawrence Luteran
Ruth McCutcheon
grandmother of Kim Segal
Solomon Radwill
father of Howard Radwill
Ruth Lovenvirth
friend of Steven & Beverly
Granoff

March 18

William Margulies
Sherman Friedman
cousin of Barbara Clarke
Teddy Golde
father of Jill Golde

Lillian Kagan
mother of Jerry Kagan
Ruth Koppelman
aunt of Jane Koppelman
Harry Schlar
father of Donna Hendel
Harry B. Trachtenberg
father of Trudy Itzko

March 19

Suzanne Perzan Celia
Gertrude Lasker
grandmother of Dr. Julie Massey

March 20

David Kohler
Murry Mason
Michael Ettelson
father of Shirley Chalick
Jack Kanter
late husband of Patricia Kanter
Jack Neff
father of Robert Neff
Nathaniel Resnick
father of Myron Resnick
Arthur Berger
brother of Shirley Birenbaum

March 21

Alan Brody
uncle of Elyse Endy
Joann Callahan
friend of Sherry Halpern
Jeanne B. Cash
mother of Stephen Cash
Robert Whitehead
grandfather of Donna Witonsky

March 22

Bette Goldfarb
aunt of Eileen Wolfson
Michael Kassel
brother of Dr. Jane Kassel Haver
Roselyn Lang
sister-in-law of Ellen Shapiro
Frances Rotenberg
mother of Nancy Bloomfield
David Stukelman
father of Judith Brenner
Marc Teller
uncle of Shaun Goldberg

March 23

Hattie Godfrey
Rae Rosan
mother of Burton Rosan
Matthew Weinberg
cousin of Jerry & Cindy Fastman
Mary Young
mother of Sara Shapiro
Joseph Zbar
father of Deane Lappin

March 24

Celia Schechter
Ruth Ross
mother of Alan Ross
Amanda Safirstein
grandmother of Julie Massey

March 25

Louis Hirsch
father of Arthur Hirsch
Arthur Kaplan
father of Jeffrey Kaplan

Bill Moore
friend of Carol Herman
Isaac Sherman
grandfather of Peter Witonsky
Maurice Klempner
father of Benson & Lynn
Klempner

March 26

Ralph Barron
father of Linda Litwin
Katherine Clay
grandmother of Karen Toren
Harry Clein
father of Warren Clein
Sidney Joseph Goodman
father of Alan J. Goodman
Mark Sheppard
brother-in-law of David &
Laurie Albert

March 27

Fannie Shulman
Maxwell Deitch
father of Serene Friedman
Charles Sussman
father-in-law of Lawrence
Luterman
Rose Wilson
grandmother of Carl Miller

March 28

Arthur Uhr
friend of Jeffrey & Harriet Bleiman
Della Marcus
grandmother of Barbara Barr

March 29

Molly Salitsky
Holgate Luteran
uncle of Lawrence Luteran
Evelyn Rokaw
great aunt of Ronald &
Nancy Hays

March 30

Tillie Block
mother of Rosalyn Smolinsky
Sonya Lubar
mother of Jodi Lubar

March 31

Simon Richard Bloomfield
father of Philip Bloomfield
Frank Borloff
father of Carol Borloff
Buddy Bortnicker
brother of Myron Bortnicker
Kenneth Klausner
husband of Pearl Klausner

"Warmth is a communicable disease. If you haven't got it, no one will be able to catch it from you."
~Robert L. Bass

MARCH CALENDAR

- | | | | | | |
|-----------|----------|---|----|--------------|--|
| 1 | 7:30 PM | Choir Rehearsal | 14 | 2:00–8:00 PM | American Red Cross - Blood Drive |
| 2 | 10:30 AM | Tanakh Study with Rabbi Rigler | 15 | 7:30 PM | Choir Rehearsal |
| | 7:30 PM | Executive Board Meeting | 16 | 10:30 AM | Tanakh Study with Rabbi Rigler |
| 3 | 10:30 AM | Hilltoppers Board Meeting | | 7:30 PM | General Board Meeting |
| March 4-6 | | Scholar-In-Residence Weekend
with guest Rahel Musleah | 17 | 7:30 PM | Hilltoppers Program |
| 4 | 6:30 PM | Potluck Dinner | 18 | 8:00 PM | Jazz Shabbat Service with Arlana Gottlieb,
Adult Choir, Dave Postmontier and Band |
| | 8:00 PM | Shabbat Service
"Jewish Calcutta through Music and Memory" | 19 | 10:30 AM | Bar Mitzvah of Ryan Kalan |
| 5 | 10:30 AM | Shabbat Service | | 7:00 PM | Megillah Reading - Adult Party |
| | | Shabbat Customs and Liturgy | 20 | 10:00 AM | Purim Shpeil and Carnival |
| | 12:00 PM | Light Indian Cuisine Kiddush Luncheon | 22 | 7:30 PM | Choir Rehearsal |
| | 6:00 PM | Alef Naming Ceremony | 23 | 10:30 AM | Tanakh Study with Rabbi Rigler |
| 6 | 10:00 AM | Brotherhood Brunch - "Jews of Iraq" | | 7:30 PM | Women's Spirituality - Lori Green |
| | 12:15 PM | Religious School Program:
"Torah and Teapots" | 25 | 8:00 PM | Shabbat Service with the Westminster
Conservatory Collegiate Chorale |
| | 2:00 PM | Fiddler on the Roof Sing-a-Long
at the Media Theatre | 26 | 10:30 AM | Bar Mitzvah of Michael Kaplan |
| 8 | 7:30 PM | Choir Rehearsal | 27 | 11:30 AM | Rabbi's Spring Lecture Series- 1 of 2 |
| 9 | 10:30 AM | Tanakh Study with Rabbi Rigler | | 1:00 PM | Clay Studio - RS Seder Plate Making |
| | 7:30 PM | Torah Study with Rabbi Rigler | 29 | 7:30 PM | Choir Rehearsal |
| 11 | 6:00 PM | Tot Shabbat | 30 | 10:30 AM | Tanakh Study with Rabbi Rigler |
| | 6:30 PM | Pot Luck Dinner | 31 | 1:15 PM | Hilltoppers Book Club |
| | 7:30 PM | Family Service | | | |



Temple Sholom in Broomall

55 North Church Lane, Broomall, PA 19008
www.temple-sholom.org
 Rabbi Peter C. Rigler
 Cantor Patrice Kaplan
 Rabbi Emeritus Mayer Selekmán

Non-Profit Org.
 BULK RATE
 US POSTAGE
 PAID
 Permit #34
 Broomall, PA 19008



UNION FOR **MEMBER**
 REFORM JUDAISM